

20130121

RIETI Workshop

Research Questions and Data set

Noriyuki Takahashi

Professor

Team Leader of RIETI Project

Musashi University

Research Question(1)

Do entrepreneurial attitudes really matter in Japan?

WHY?

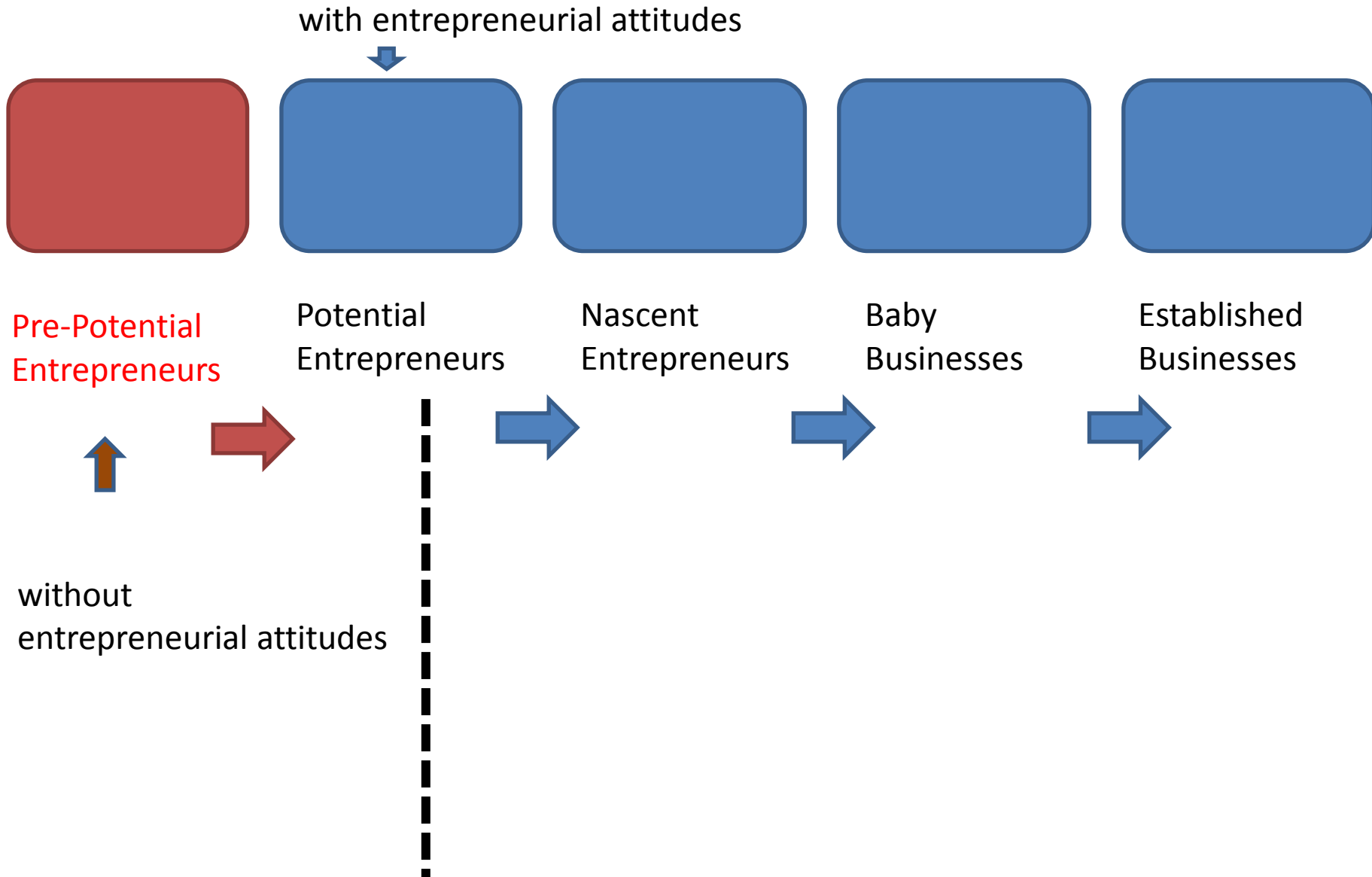
If they do
entrepreneurial attitudes would be one of greatly influential
factors in explaining the low level of activities.

Answer? Yes

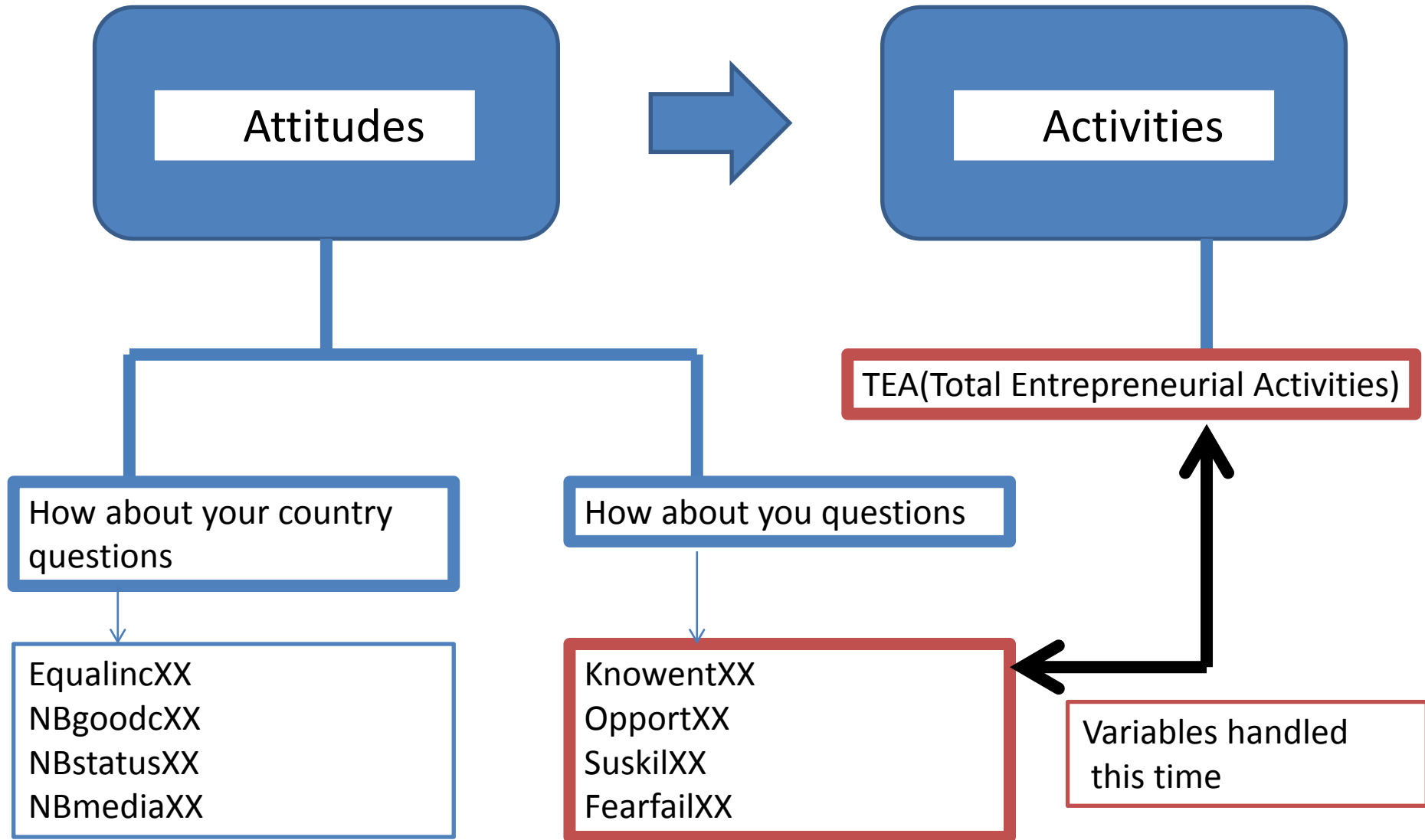
Why is this answer great?

Political measures targeted on attitudes would be effective.

Research Question (2)



Attitudes and Activities



Attitude related Questions

KnowentXX:

Do you know someone personally who started a business in the past 2 years?
⇒ Yes, No, Don't know or Refused

OpportXX:

In the next six months, will there be good opportunities for starting a business in the area where you live? ⇒ Yes, No, Don't know or Refused

SuskilXX:

Do you have the knowledge, skill and experience required to start a new business? ⇒ Yes, No, Don't know or Refused

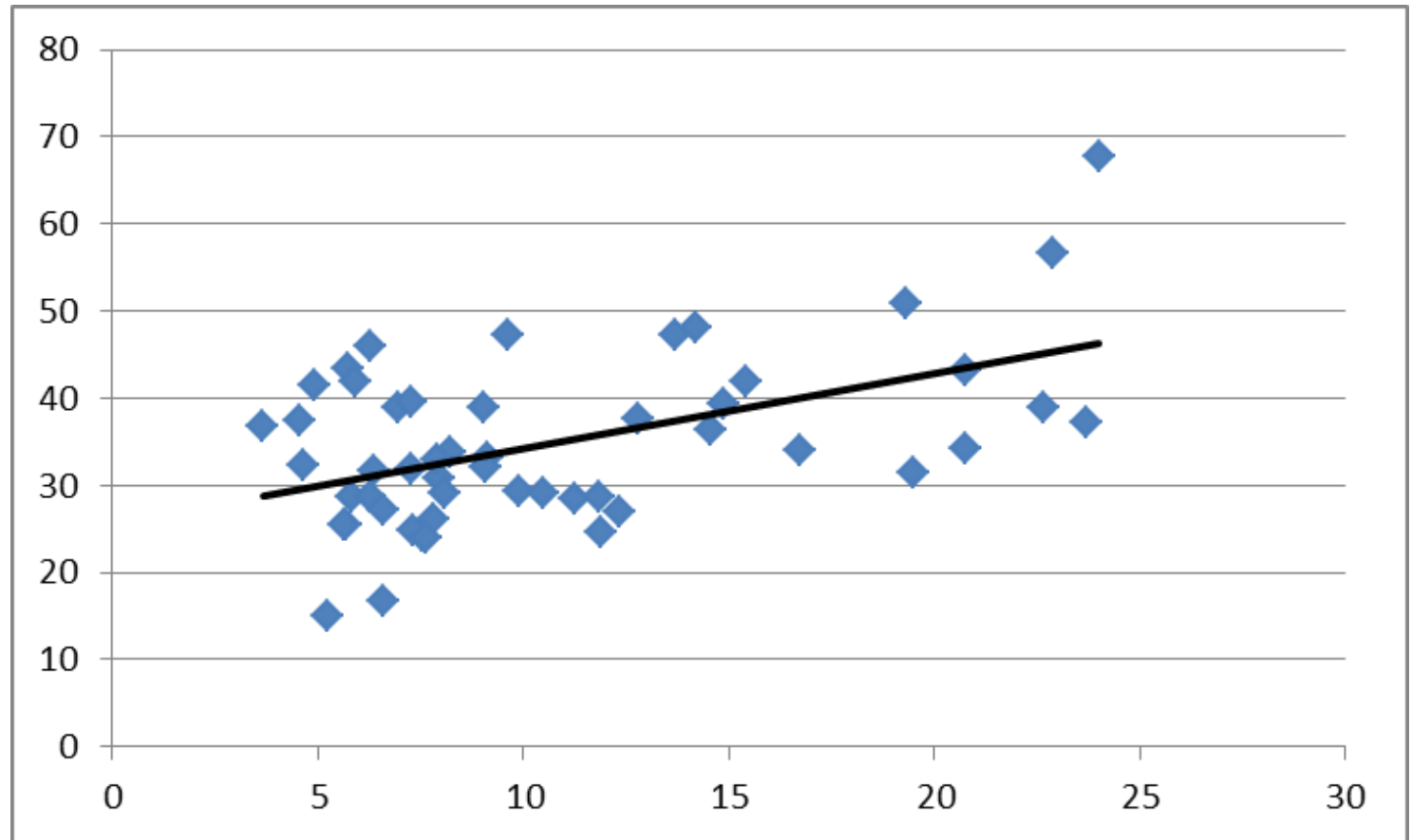
FearfailXX:

Would fear of failure prevent you from starting a business?
⇒ Yes, No, Don't know or Refused

Correlation between TEA and KOENTR

National Level Data (2011)

KOENTR



Correlation coefficient=0.51

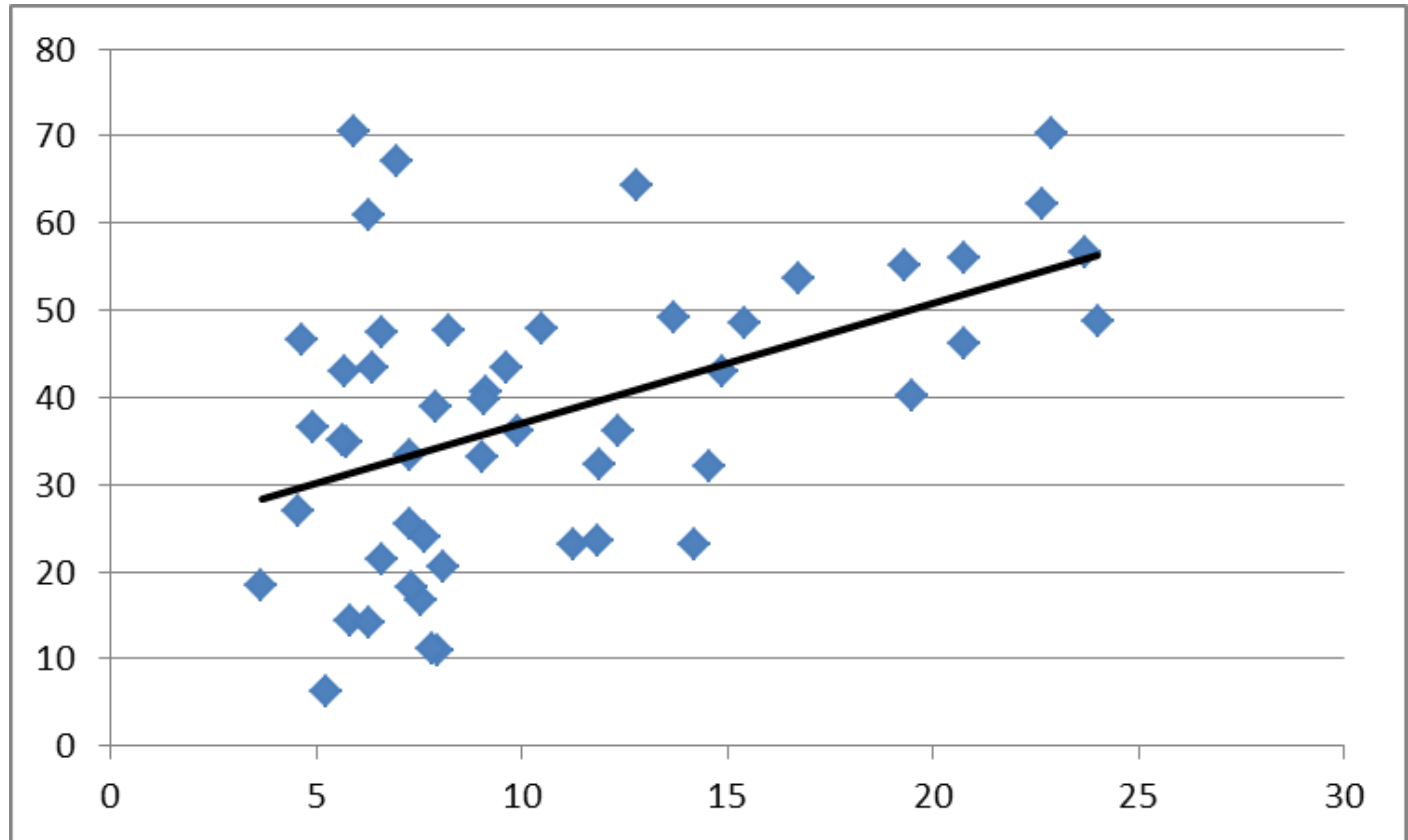
Statistically significant at the level of 1%

TEA

Correlation between TEA and OPPORT

National Level Data (2011)

OPPORT



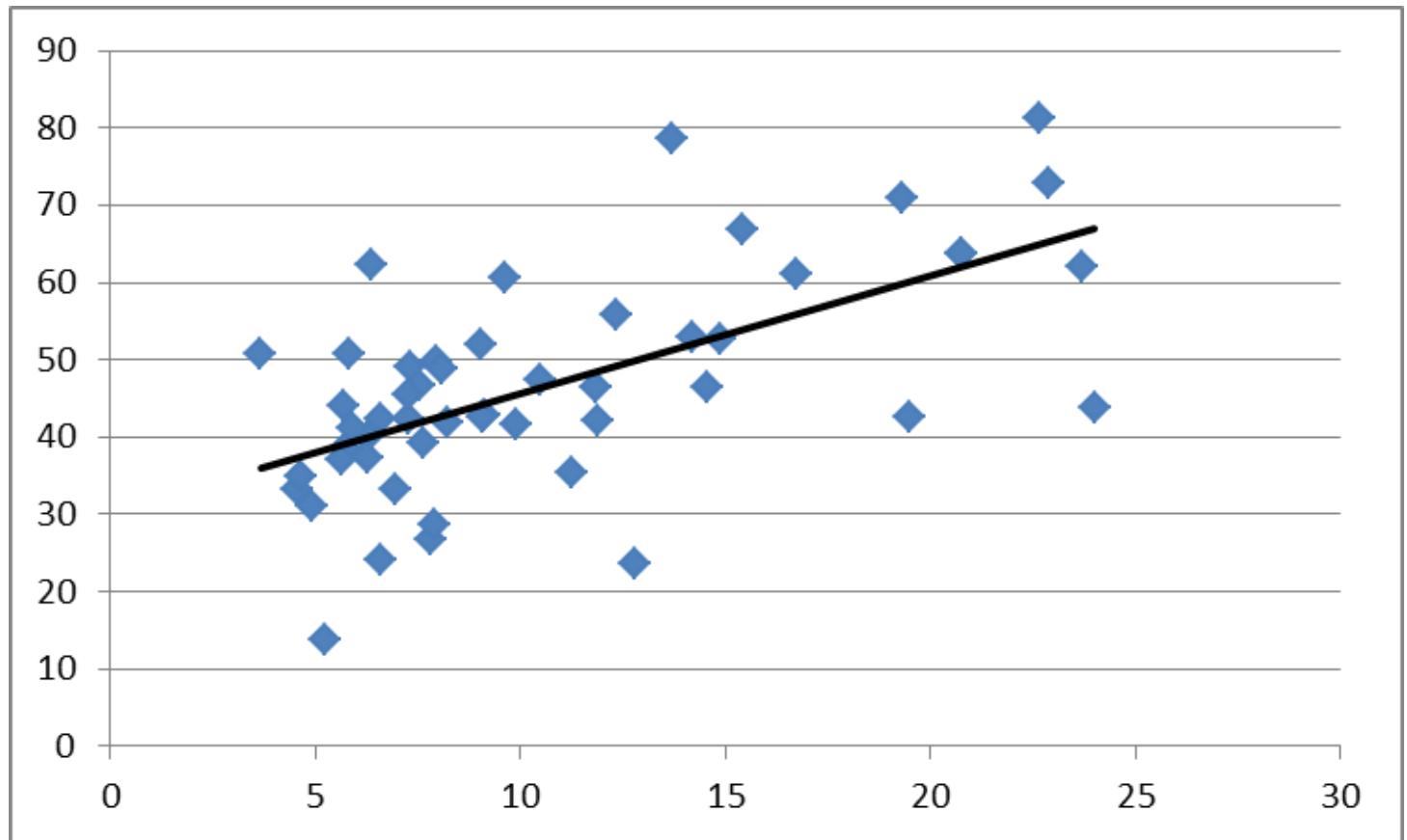
Correlation coefficient=0.477
Statistically significant at the level of 1%

TEA

Correlation between TEA and SUSKIL

National Level Data (2011)

SUSKIL



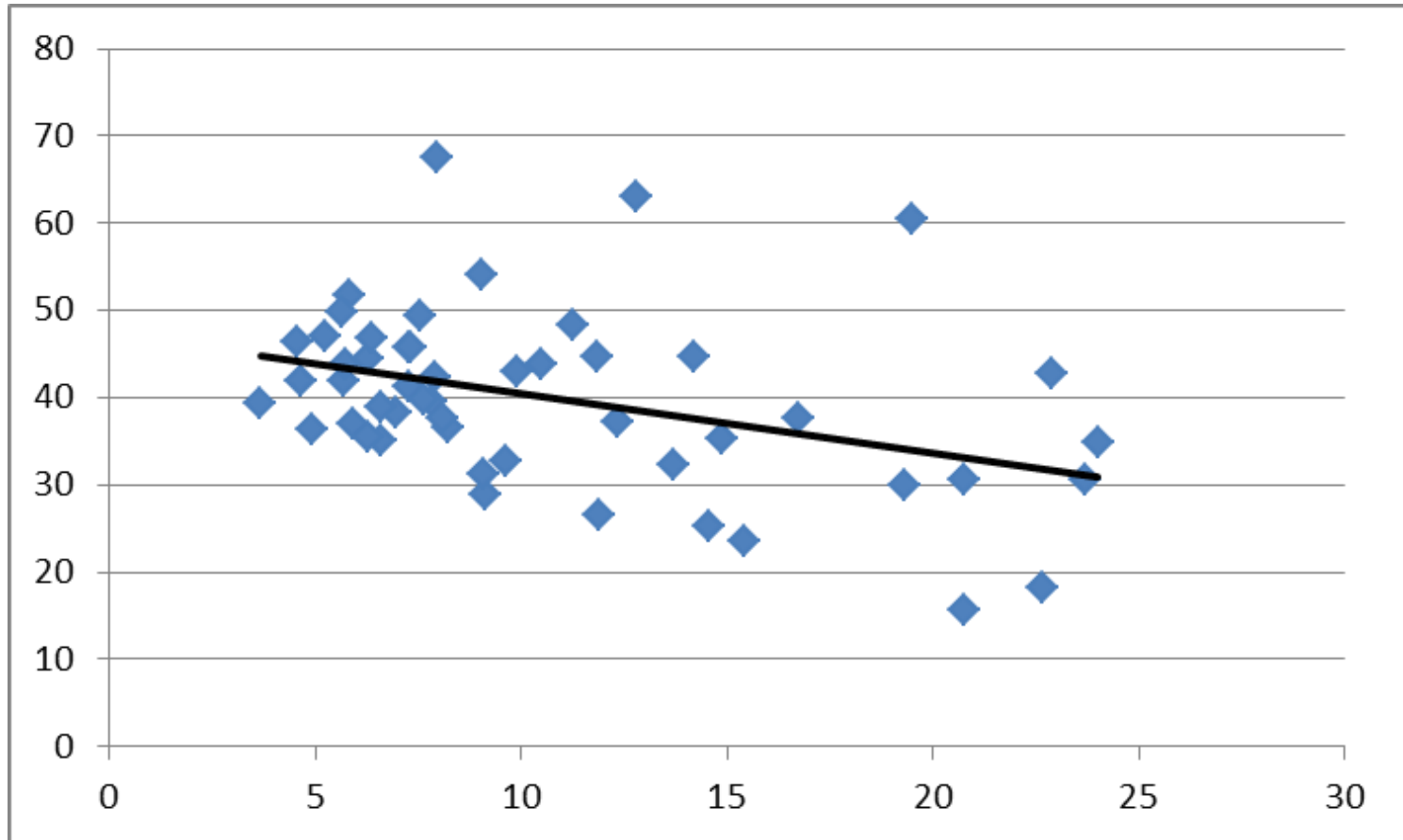
Correlation coefficient=0.621
Statistically significant at the level of 1%

TEA

Correlation between TEA and FRFAIL

National Level Data (2011)

FRFAIL

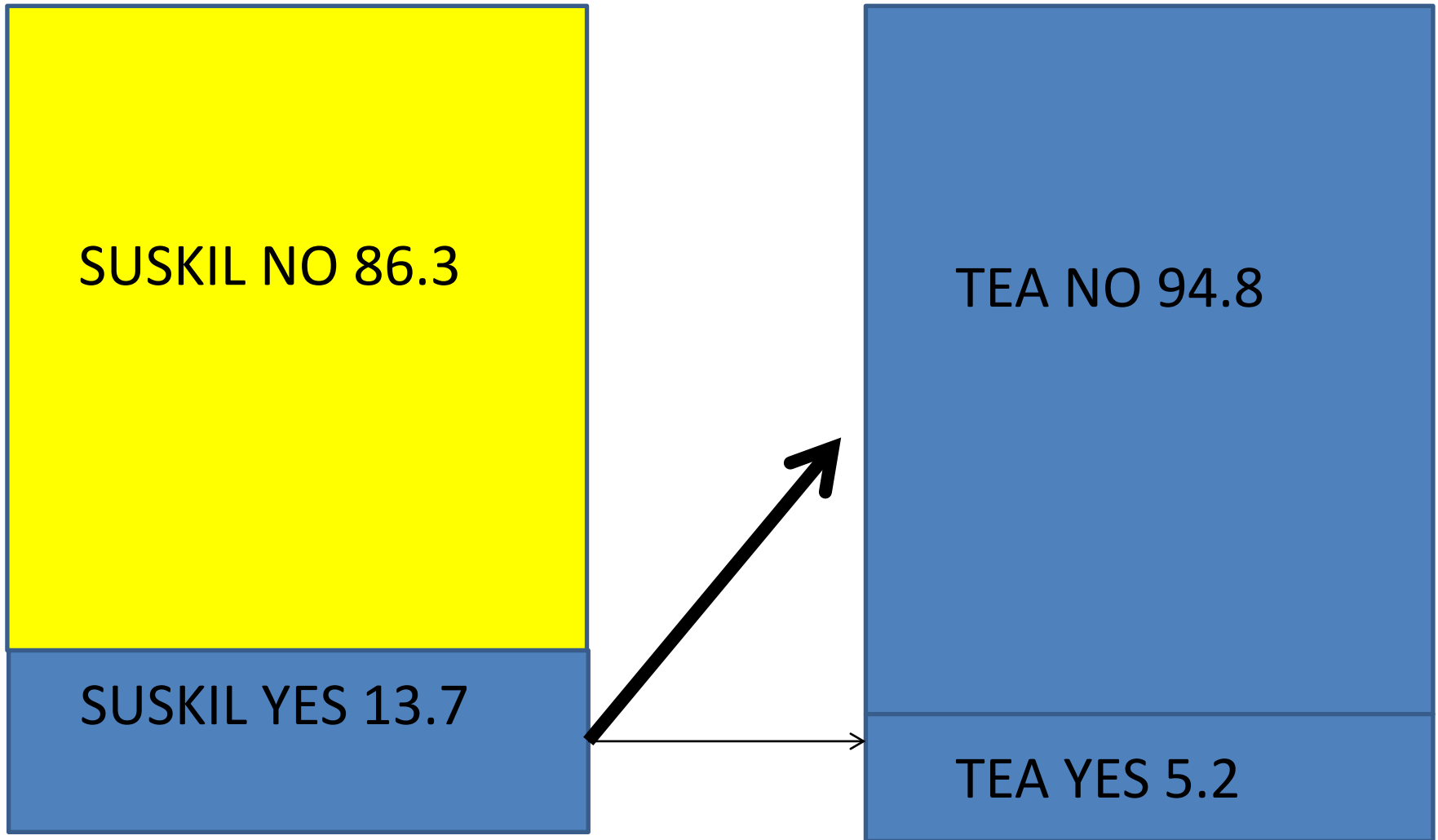


Correlation coefficient=-0.385
Statistically significant at the level of 1%

TEA

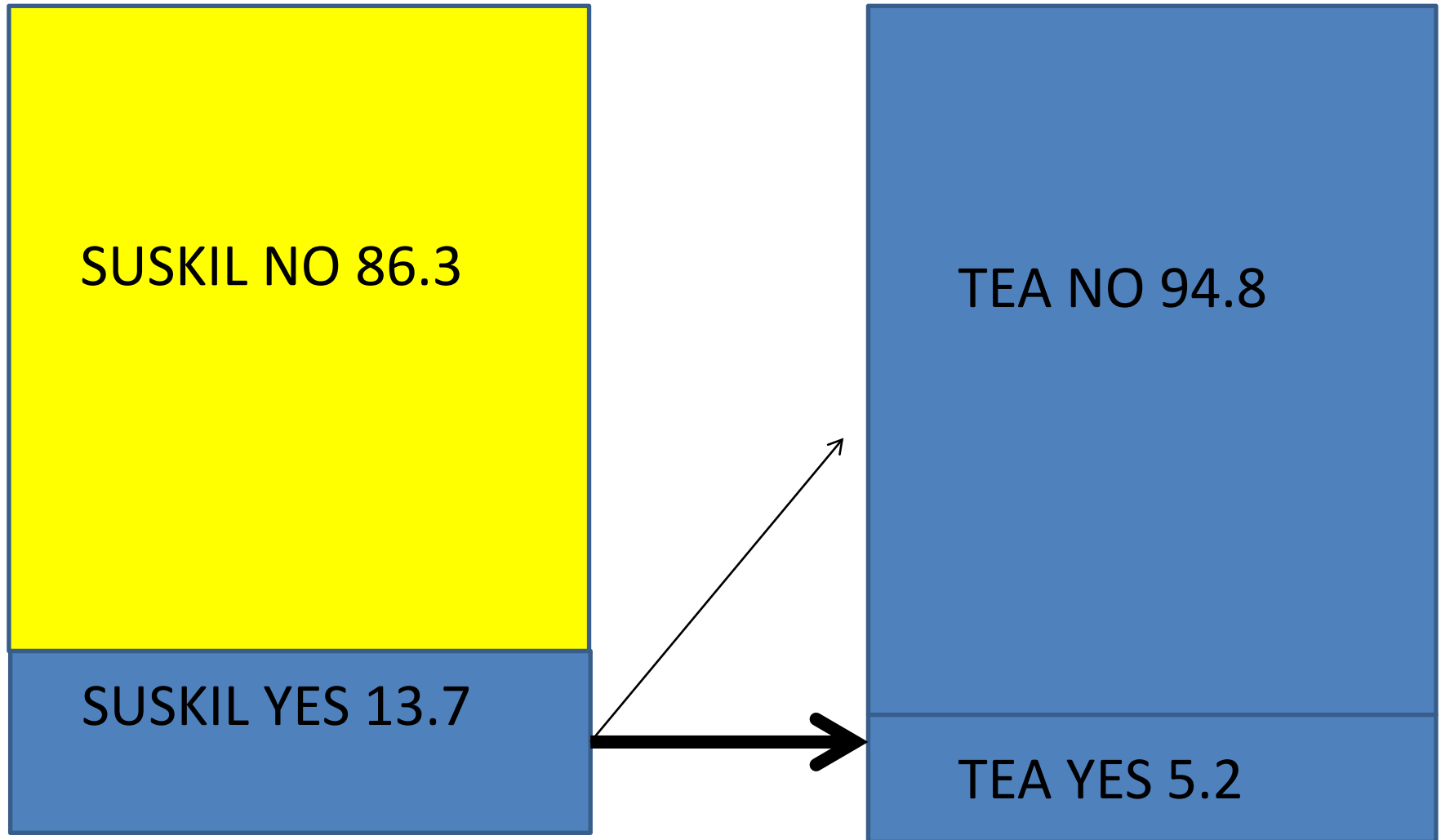
At the individual data level?

Japan (2011)



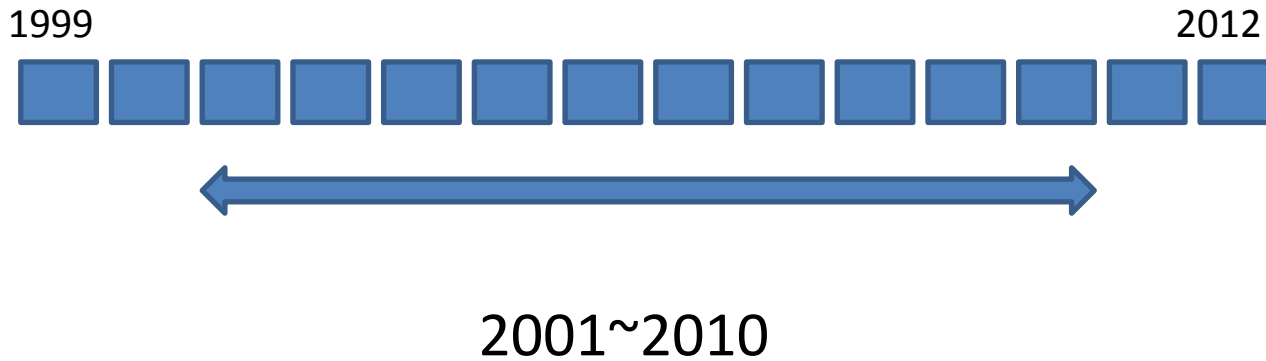
At the individual level?

Japan (2011)

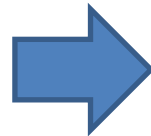


Data Set(1)

1 Range of Years



2 Countries



USA
France
Italy
UK
Germany
Japan

Data Set (2)

3 The number of samples (Individual Level Data)

USA	40,675
France	19,959
Italy	23,723
UK	199,073
Germany	64,117
Japan	19,326
Total	366,873

Project Members

Members	Institutions
Noriyuki Takahashi	Musashi University
Takehiko Isobe	Keio Universtiy
Yuji Honjo	Chuo University
Takehiko Yasuda	Toyo University
Masaaki Suzuki	Japan Finance Corporation