

Structural Change and Productivity Growth in Japan: 1960-2000

Masahiro Kuroda

Hiroki Kawai

Kazushige Shimpo

Koji Nomura

Koichi Hikita

RIETI-KEIO conference on Japanese Economy

Leading East Asia in the 21st Century

Today's Topics

- Outlines of KDB(Keio Economic Observatory Database)
- Structural Change in Japan(Skyline Analysis)
- Sources of Aggregate Productivity Growth and Industry Contributions
- Interindustry Effects of Productivity Growth on Commodity Prices

KEO Data Base (KDB) Input-Output Table

	commodity	industry	Final Demand domestic	E	M	Output
com.	<u>X</u>	<u>U</u>	<u>fd</u>			
scrap input						
ind.	<u>V</u>					
non-competitive import						
scrap output						
value added		<u>va</u>				
Output						

Sector Classification

-
- | | |
|------------------------------------|------------------------------|
| 1. Agriculture, Forestry & Fishery | 23. Motor Vehicle |
| 2. Coal Mining | 24. Other Transp. Machinery |
| 3. Other Mining | 25. Precision Instruments |
| 4. Building & Construction | 26. Other Manufacturing |
| 5. Food Manufacturing | 27. Railway Transportation |
| 6. Textile | 28. Road Transportation |
| 7. Apparel | 29. Water Transportation |
| 8. Woods & Related Products | 30. Air Transportation |
| 9. Furniture & Fixture | 31. Storage Facility Service |
| 10. Paper & Pulp | 32. Communication |
| 11. Publishing & Printing | 33. Electricity |
| 12. Chemical Products | 34. Gas Supply |
| 13. Petroleum Refinery | 35. Water Supply |
| 14. Coal Products | 36. Wholesale & Retail |
| 15. Rubber Products | 37. Finance & Insurance |
| 16. Leather Products | 38. Real Estate |
| 17. Stone & Clay | 39. Education |
| 18. Iron & Steel | 40. Research |
| 19. Non-ferrous Metal | 41. Medical Care |
| 20. Metal Products | 42. Other Service |
| 21. General Machinery | 43. Public Services |
| 22. Electric Machinery | |

Labor Input

Industry(43) KDB industry classification

Gender(2) male,female

Age(11) 15-19,20-24,25-29,30-34,35-39,
40-44,45-49,50-54,55-59,60-64,over 65

Education(4) under 9, 10-12, 13-14, over 15

Employment

Status(3) employee, self-emp., unpaid family
worker

Capital Input

Industry

KDB 43 Industry

Classification,

Private, Public,

Infrastructure

Assets

78 tangible

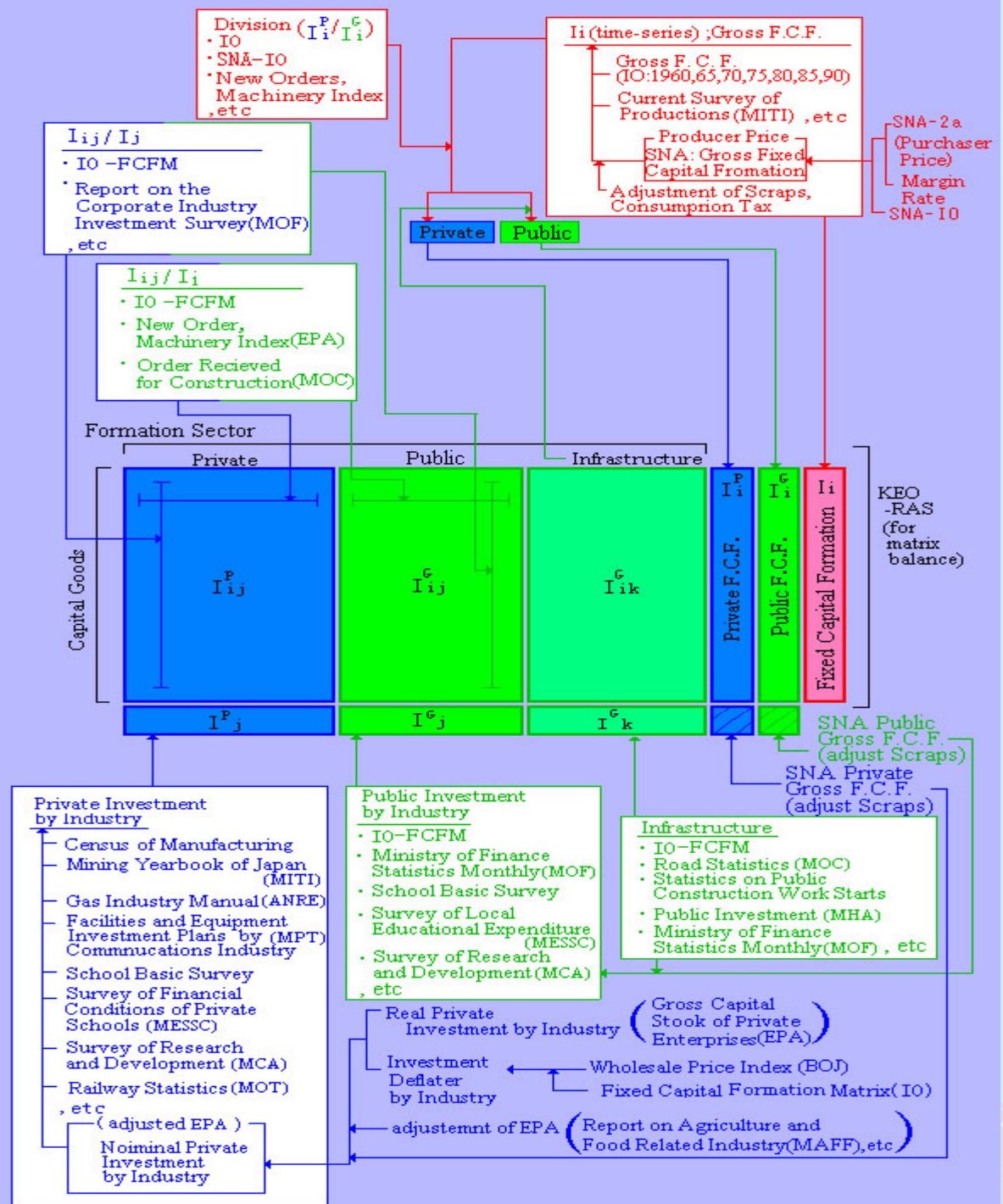
assets,

3 intangible

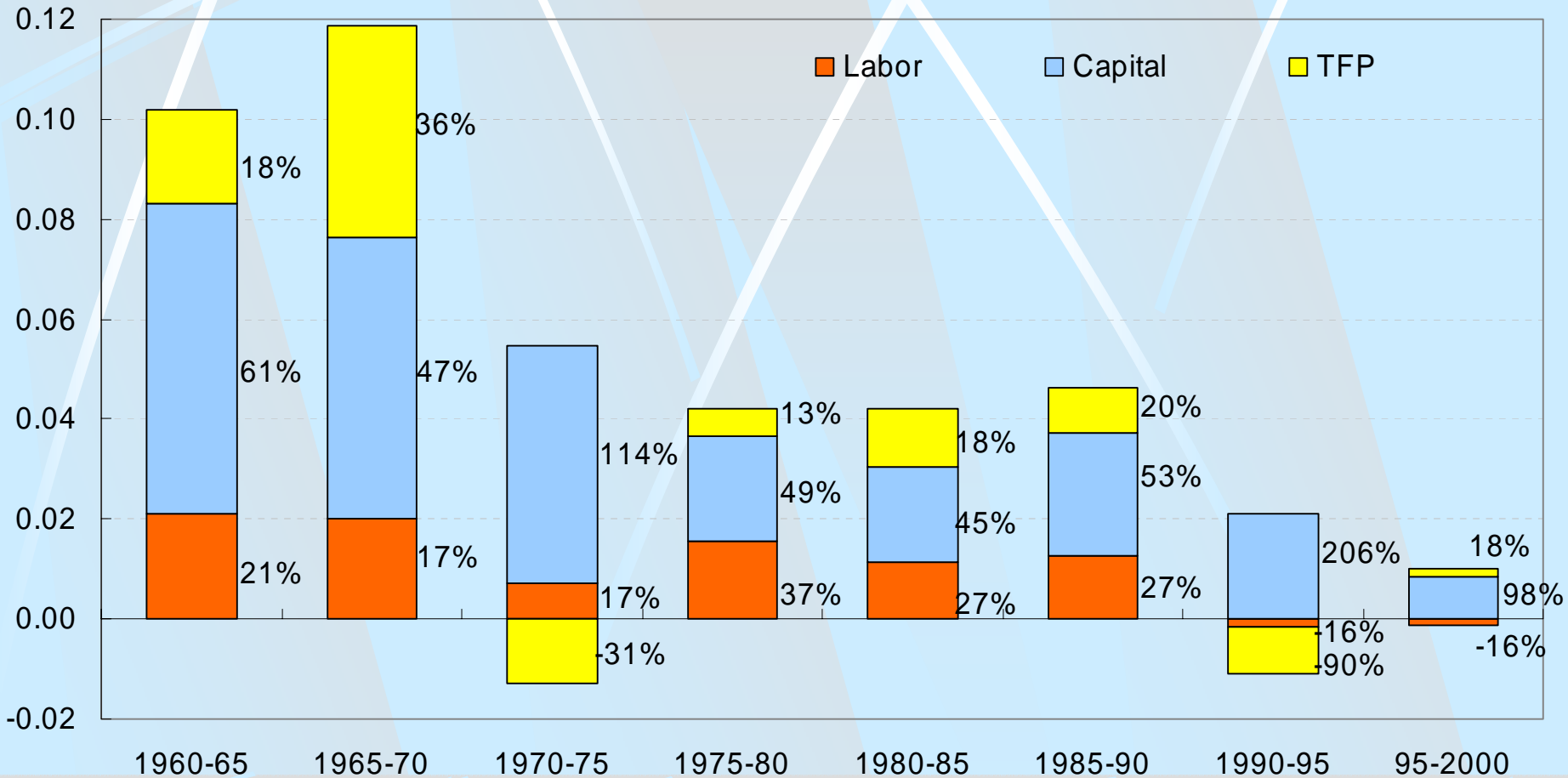
assets,

3 inventory,

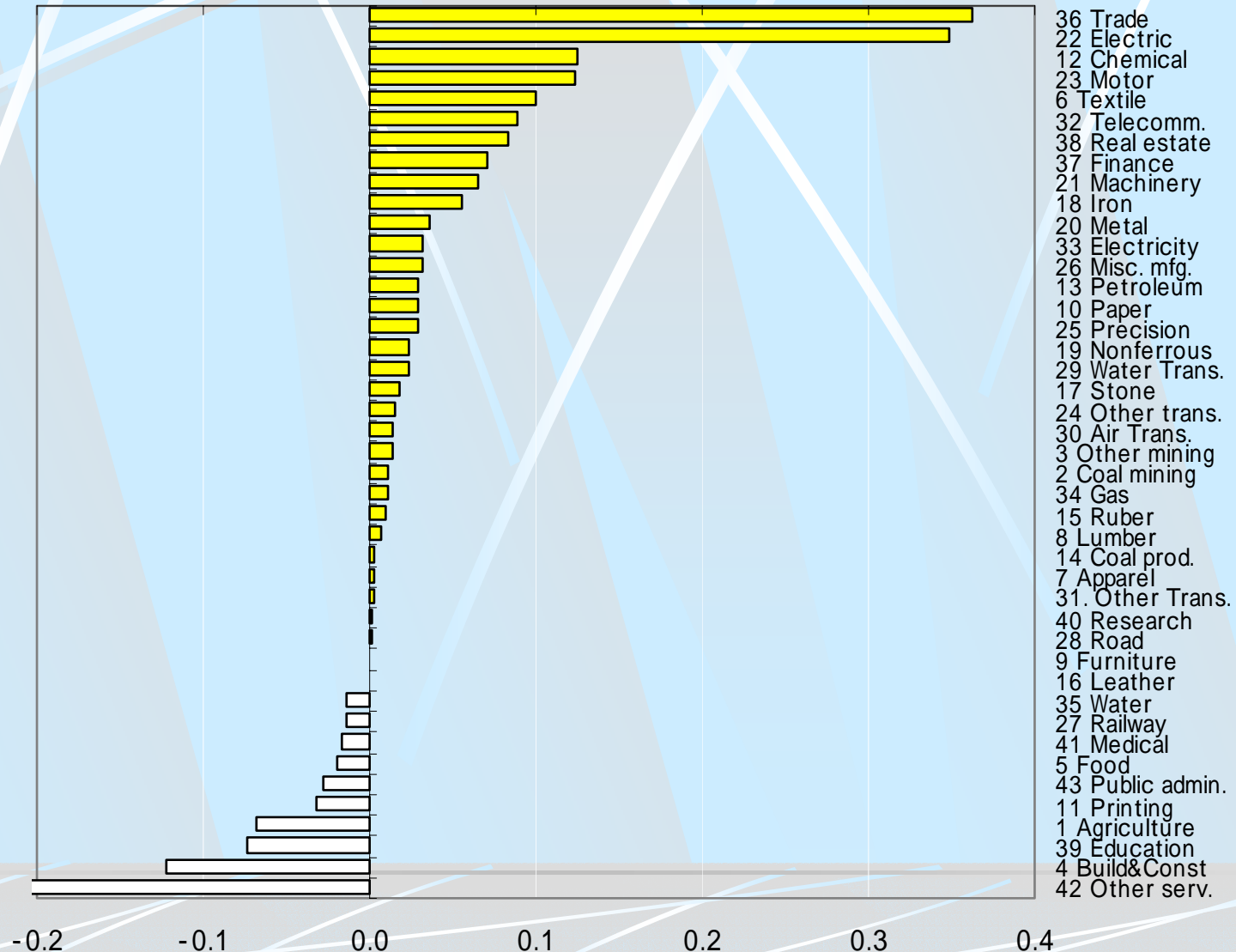
3 land



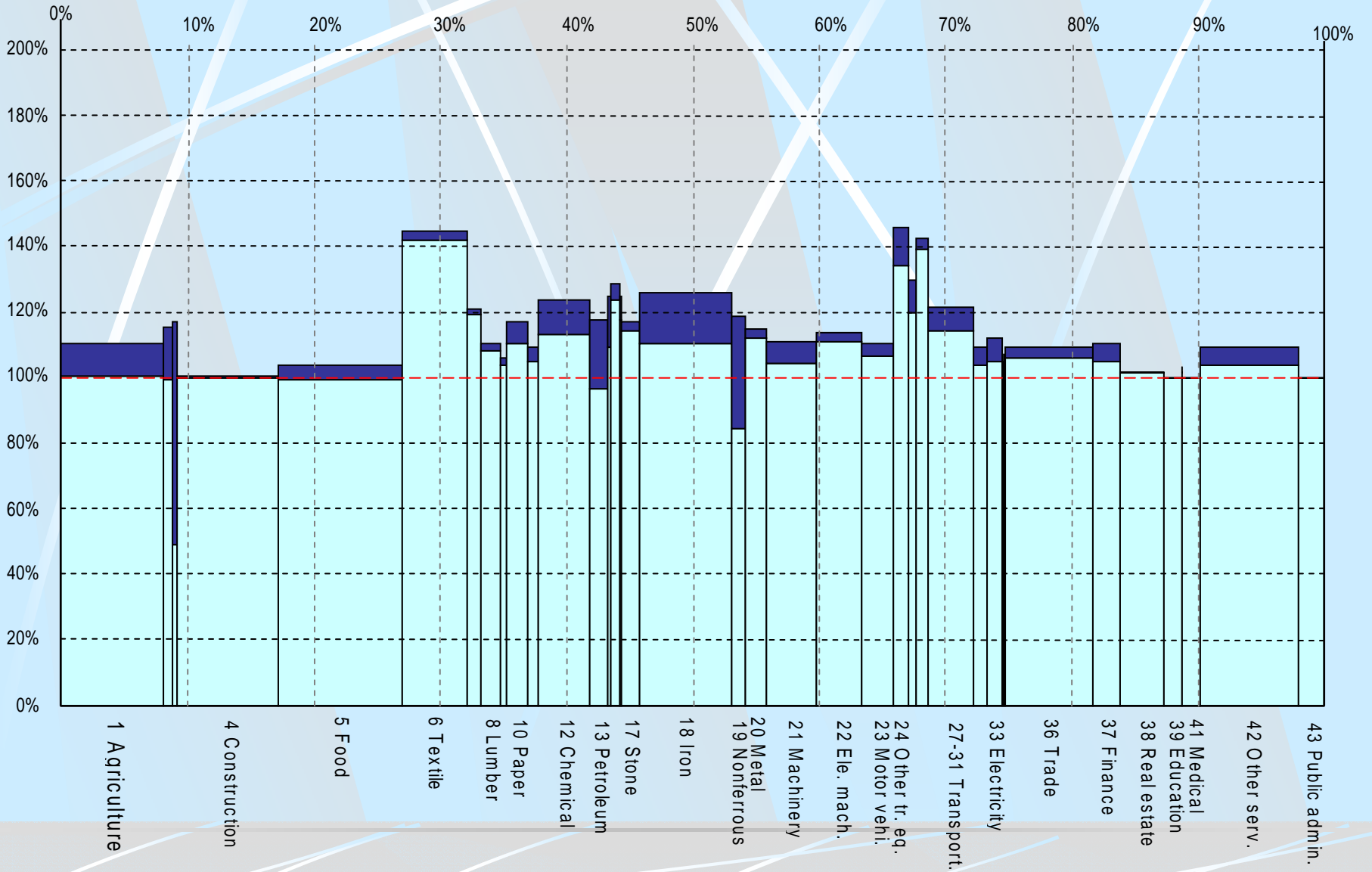
Sources of Economic Growth



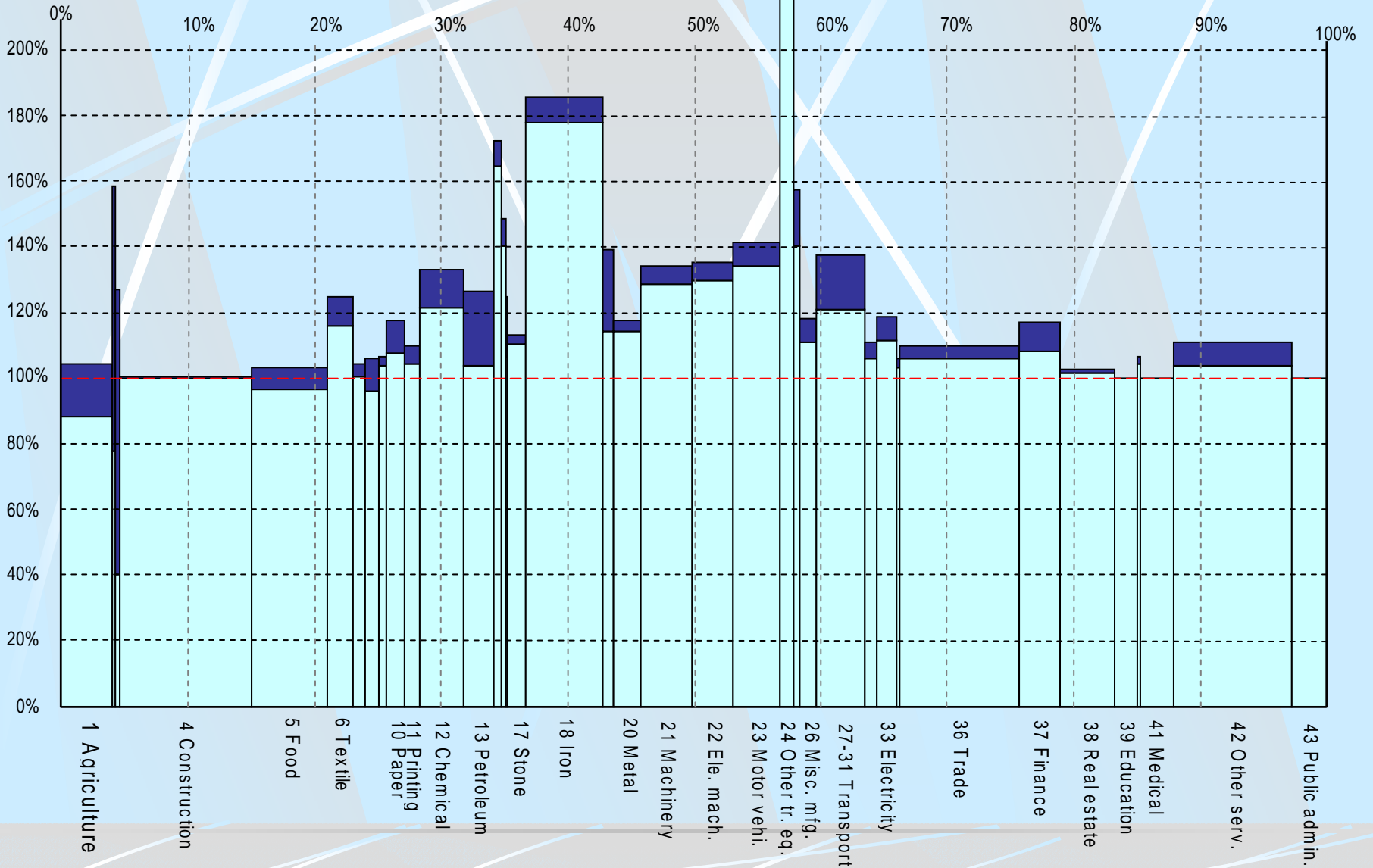
Industry Contributions to Aggregate TFP, 1960-2000



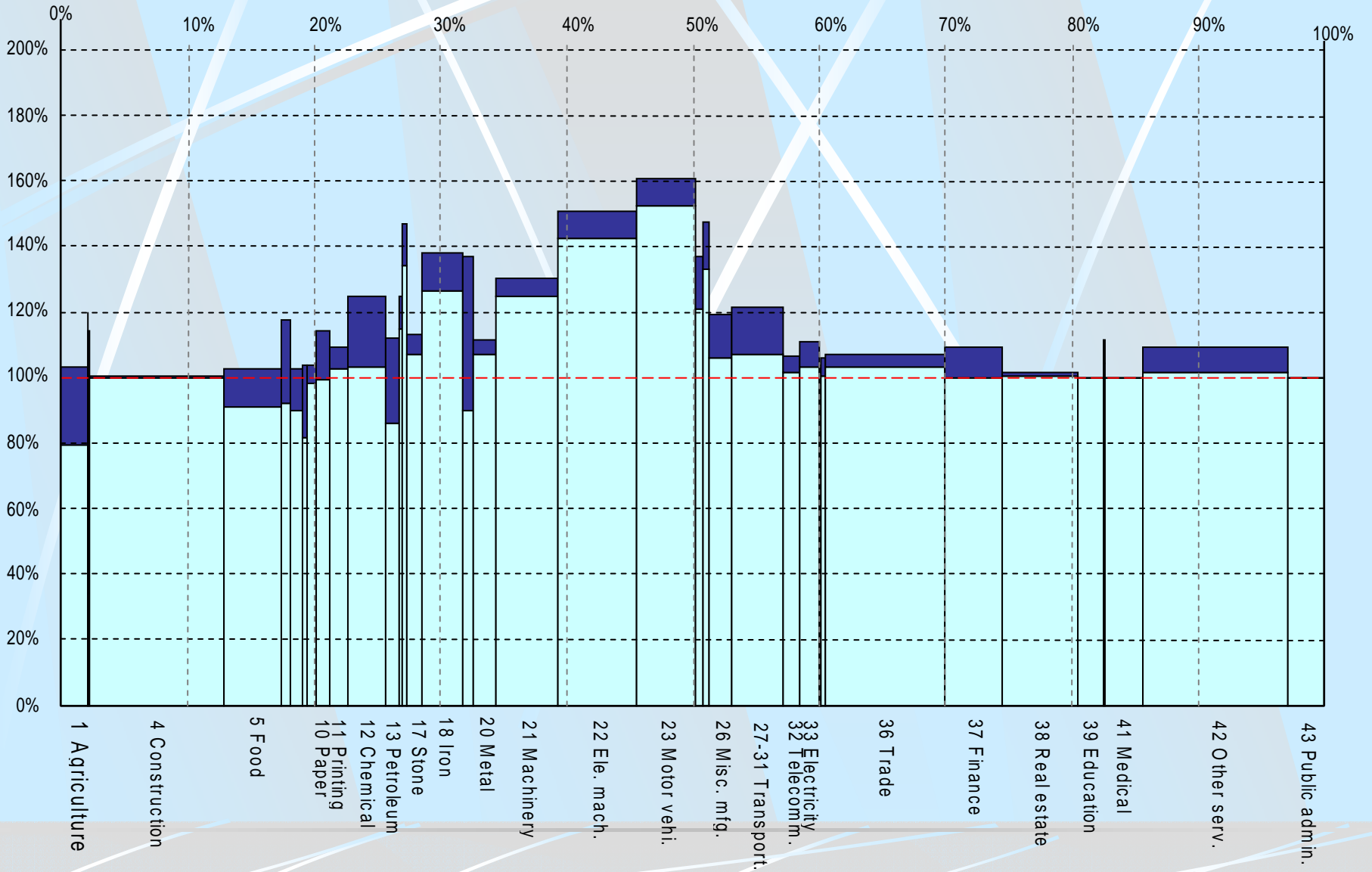
Skyline (1960)



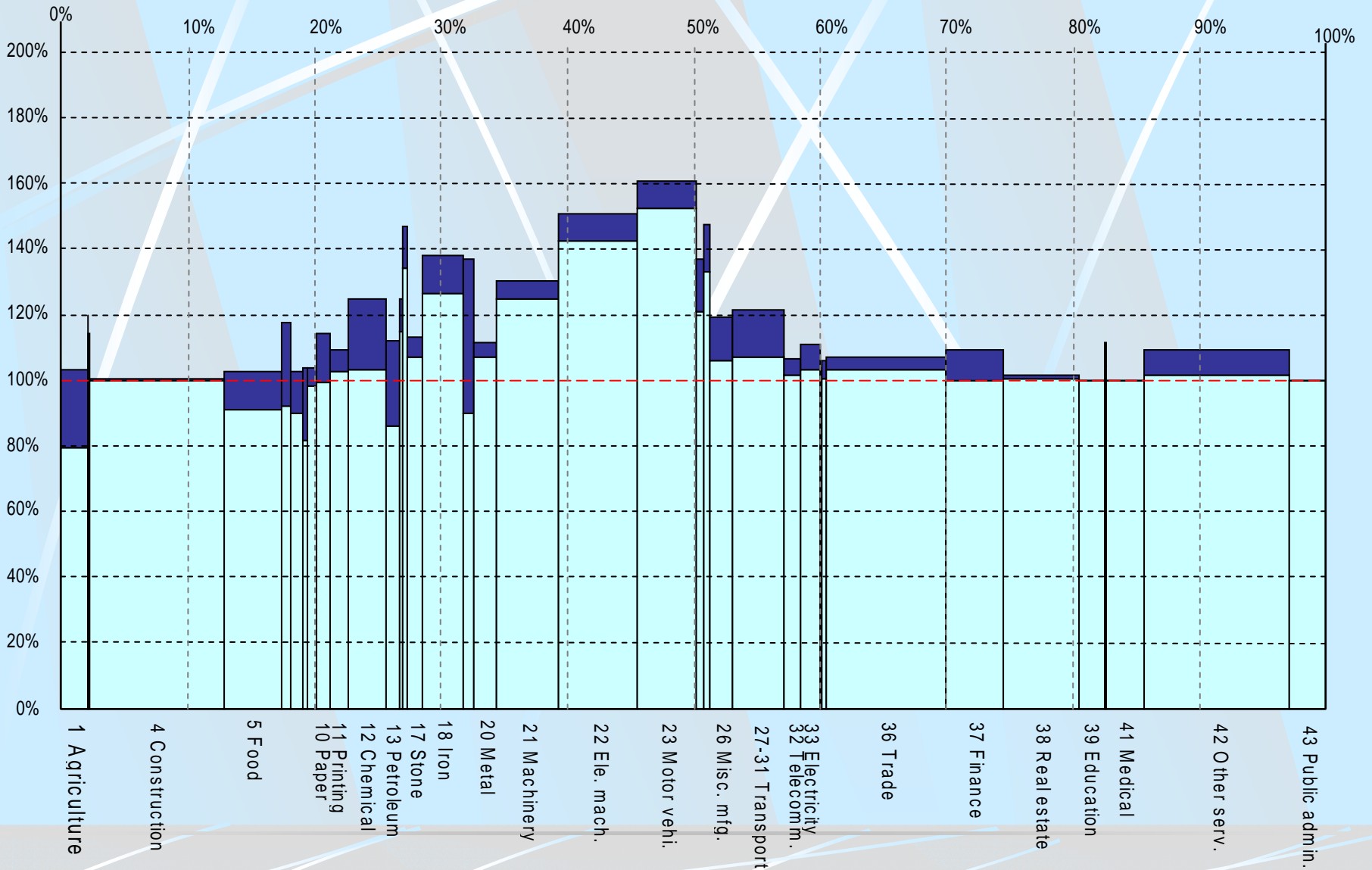
Skyline (1975)



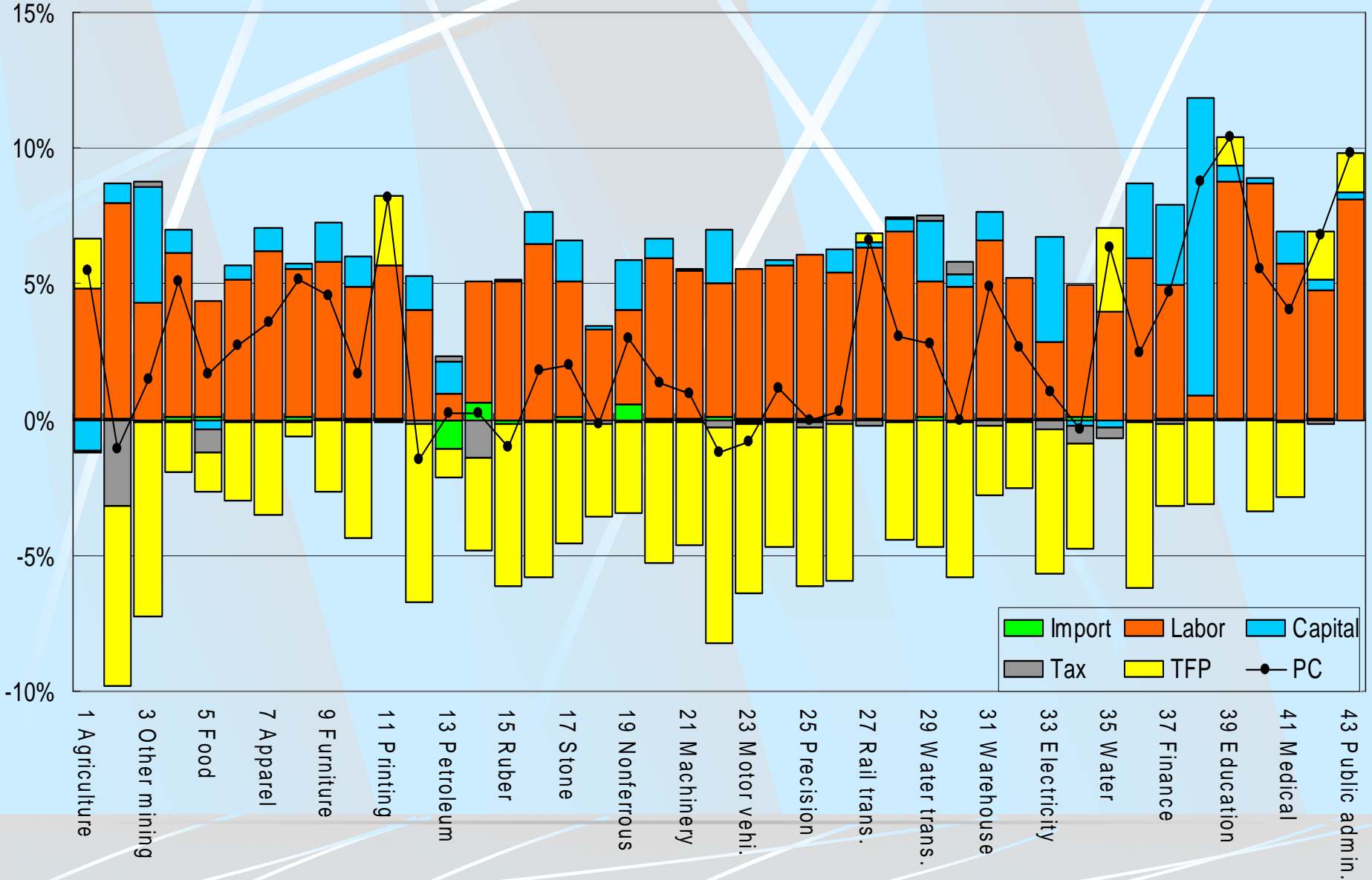
Skyline (1990)



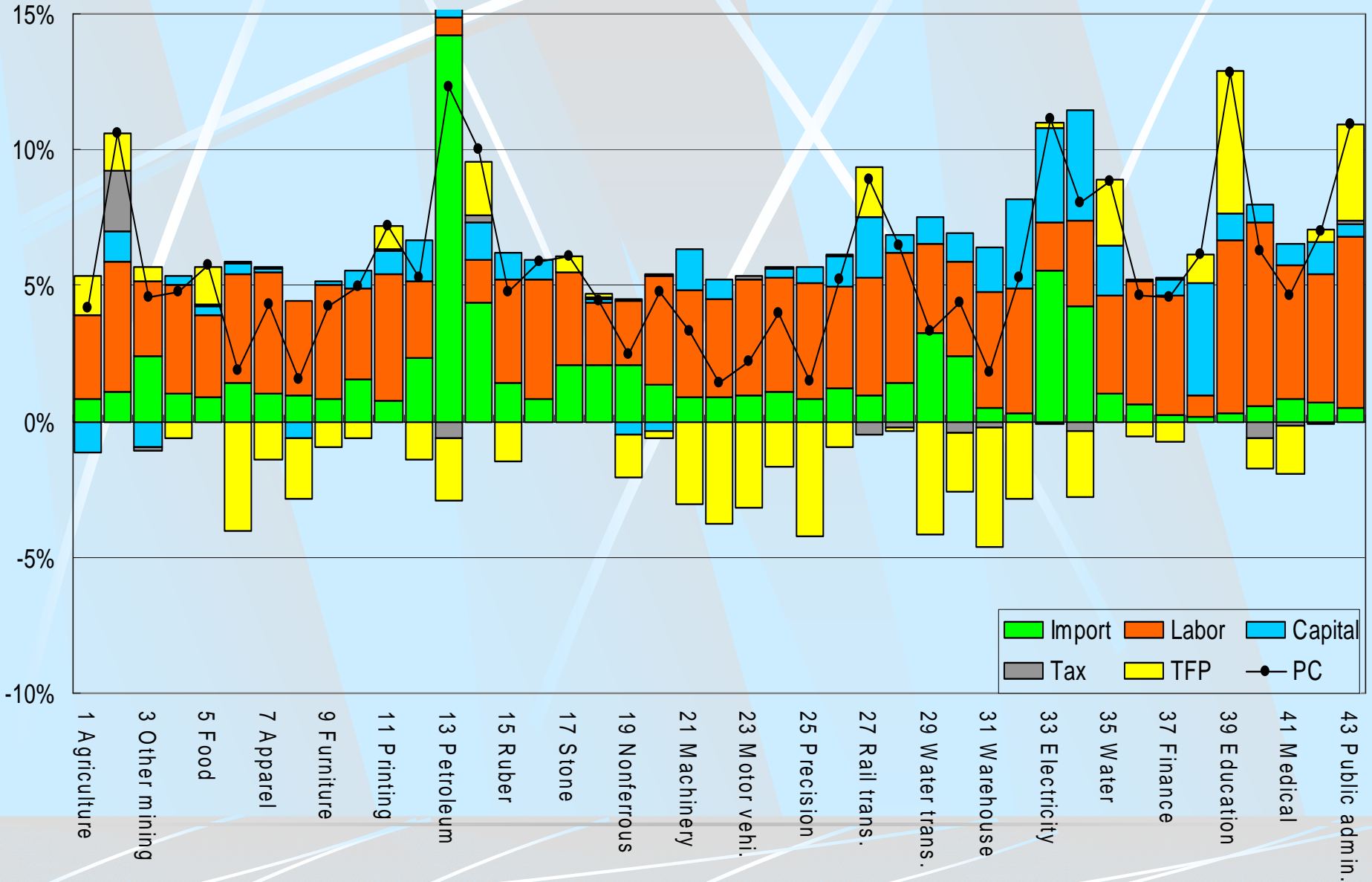
Skyline (2000)



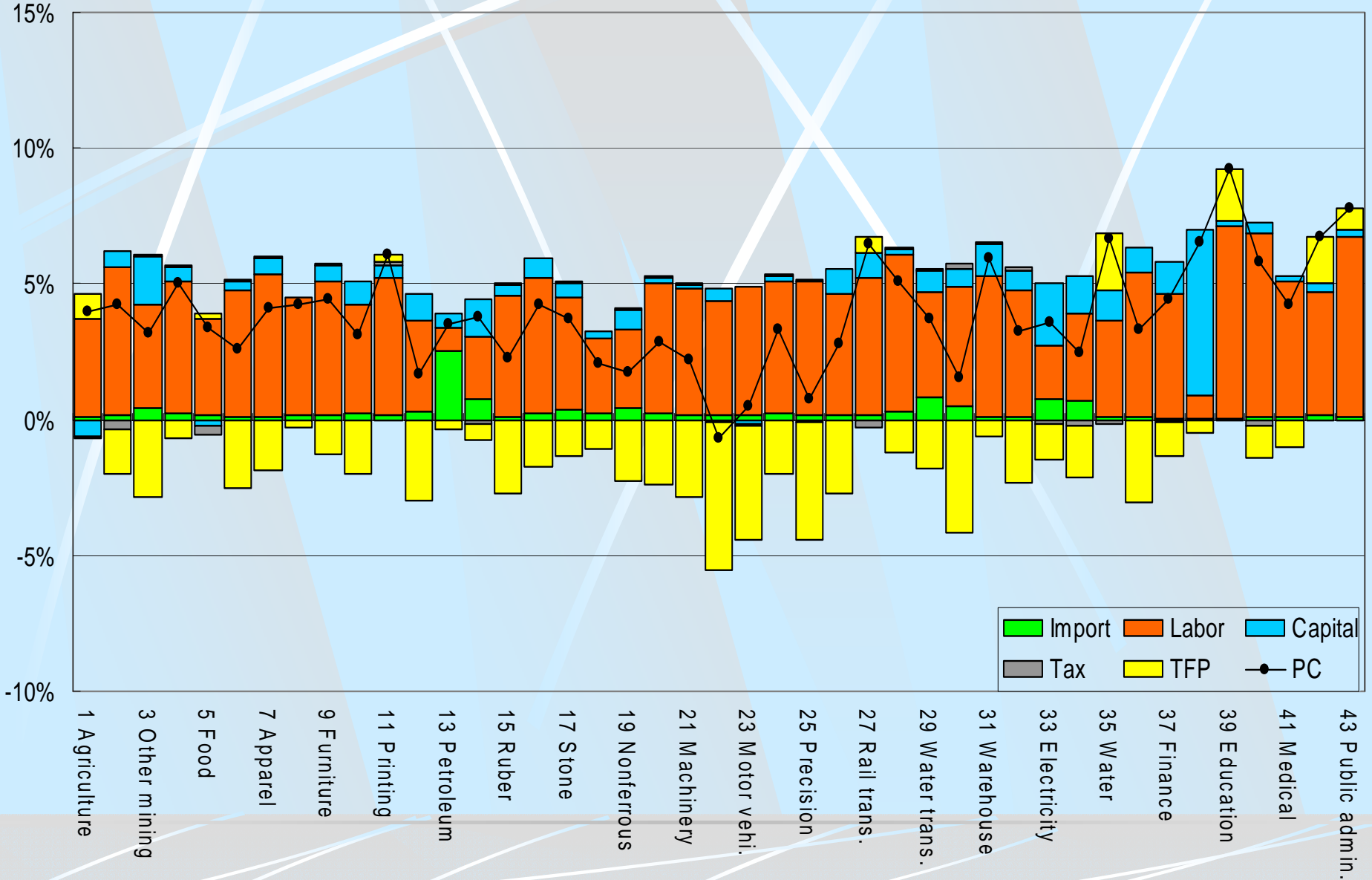
Inter-Industry (1960-1970)



Inter-Industry (1973-1985)



Inter-Industry (1985-1991)



Inter-Industry (1991-2000)

