

Demographic Change

How the US is Coping with Aging,
Immigration, and Other Challenges

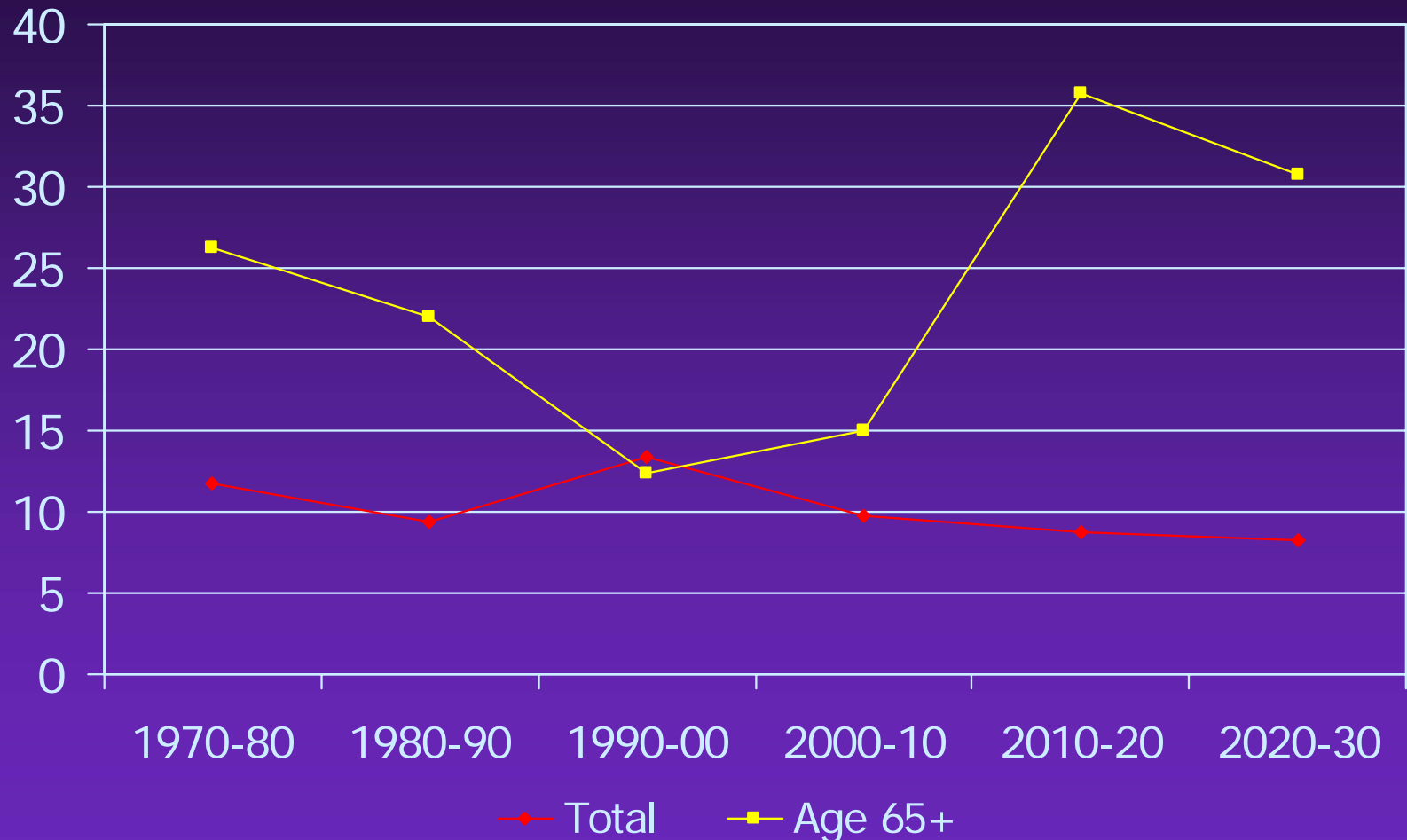
William H. Frey

Brookings Institution

University of Michigan

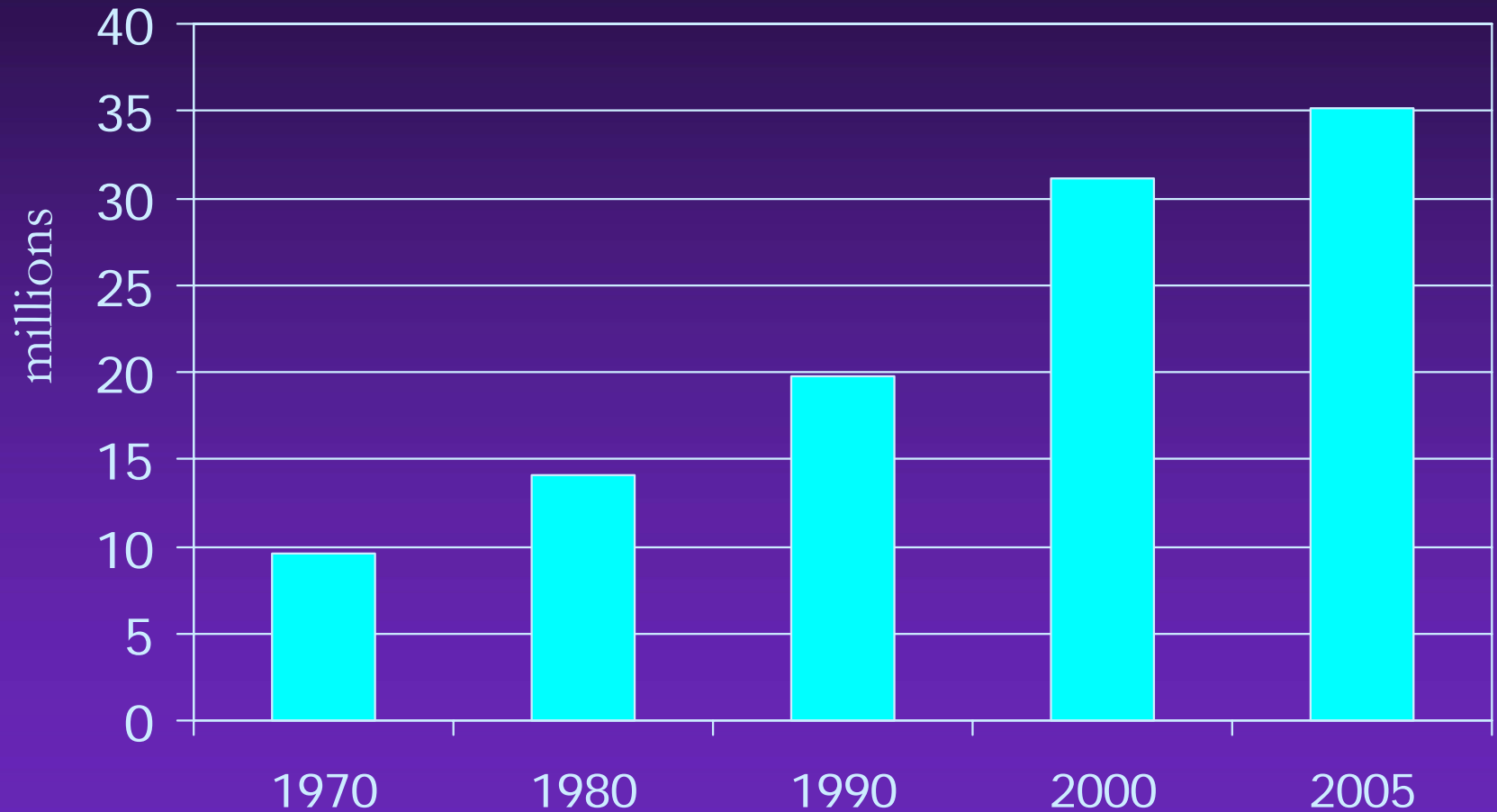
www.frey-demographer.org

US: Total and Age 65+ Growth, 1970-2030



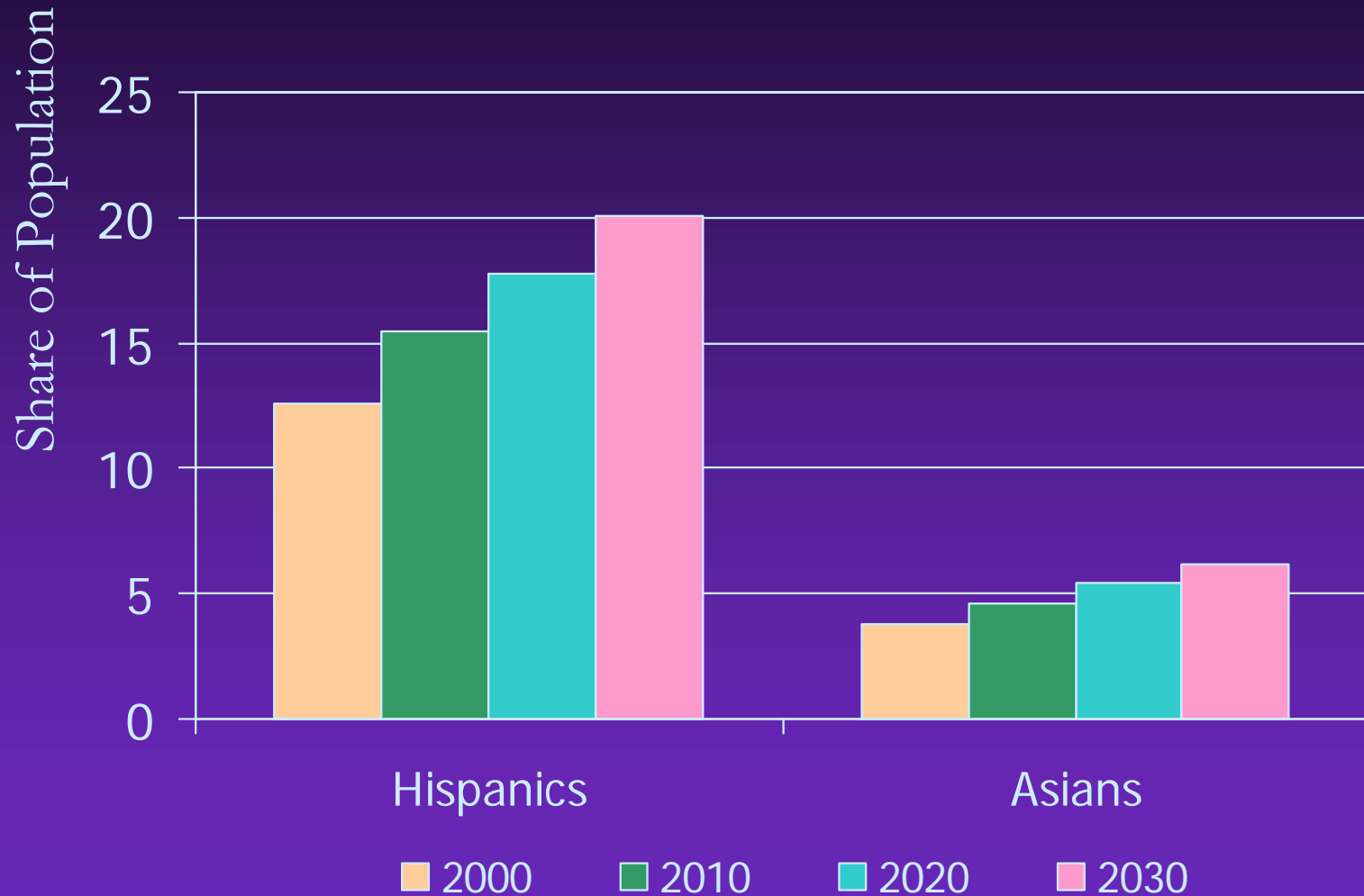
Source: William H. Frey analysis

US Immigrant Population, 1970 - 2005



Source: William H. Frey analysis

Growing New Minorities, 2000- 30



Source: William H. Frey analysis

Total Fertility Rate

United States	2.05
France	1.89
United Kingdom	1.82
Italy	1.38
Germany	1.36
Japan	1.27

Life Expectancy

Japan	82.6
France	80.7
Italy	80.5
Germany	79.4
United Kingdom	79.4
United States	78.2

Immigration Rate (per 1000)

United States	3.9
Italy	2.6
United Kingdom	2.1
Germany	1.8
France	1.6
Japan	0.4

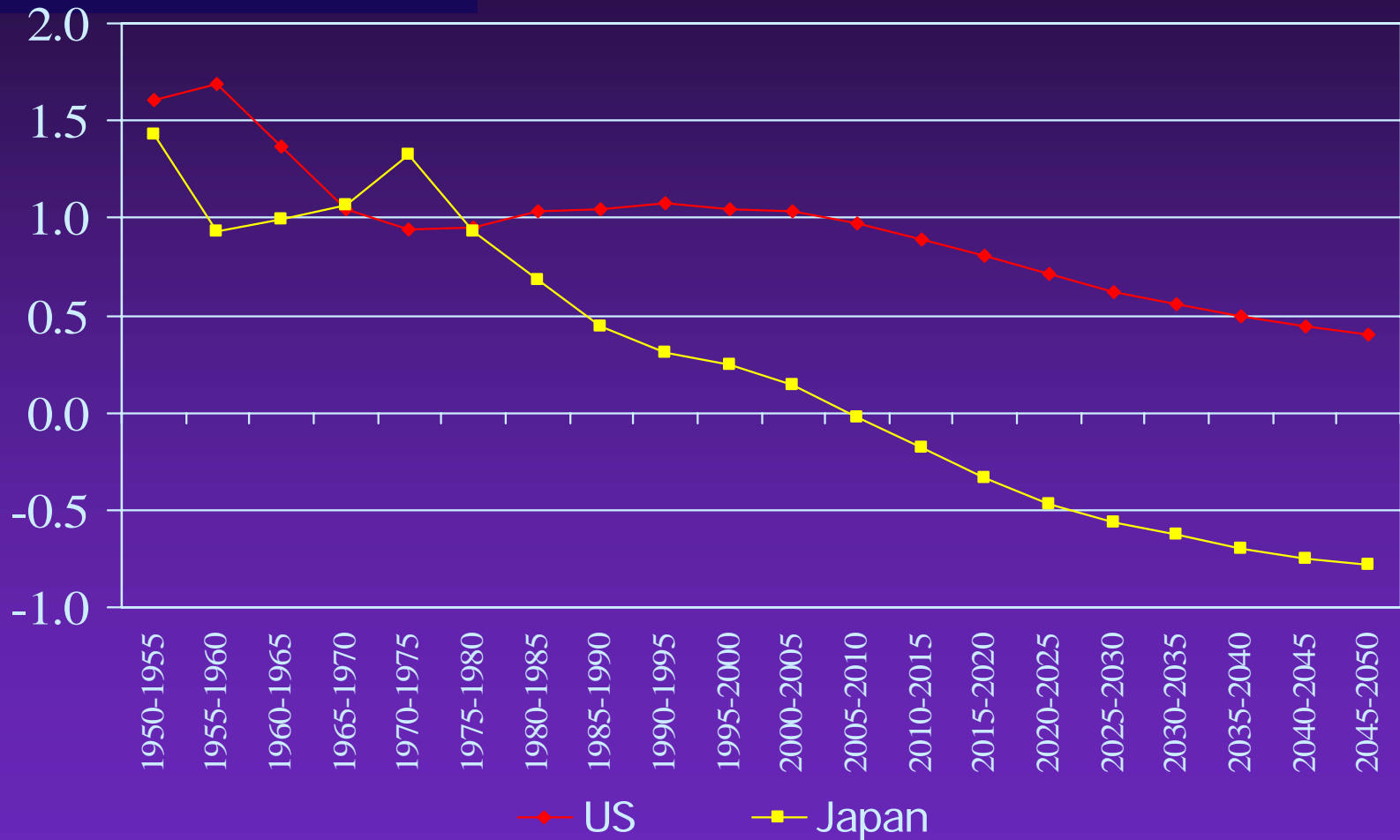
Projected Growth, 2006-2050

United States	40%
United Kingdom	14%
France	5%
Italy	-5%
Germany	-9%
Japan	-21%

Percent Aged 65+

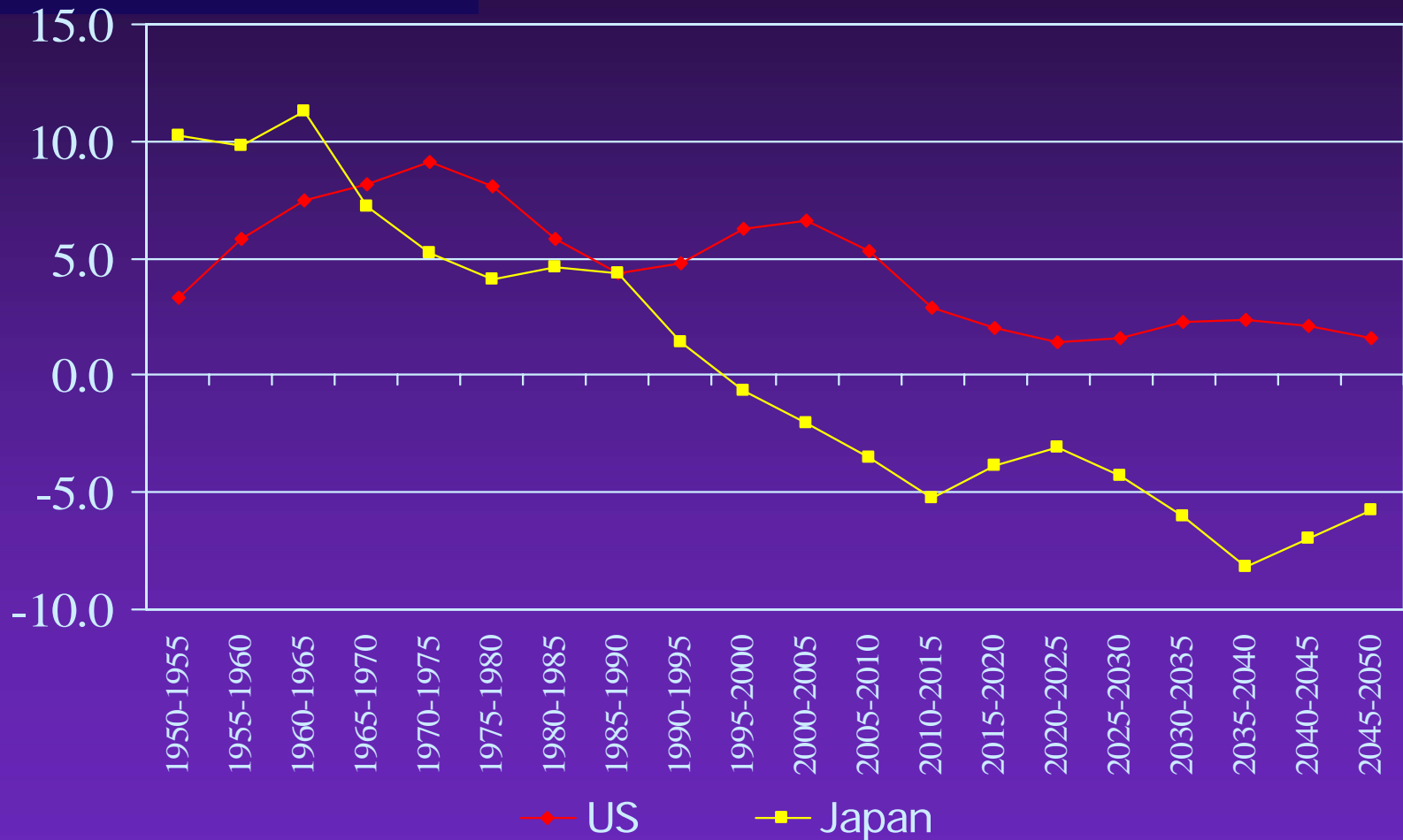
Japan	20%
Germany	19%
Italy	19%
France	16%
United Kingdom	16%
United States	12%

Population Growth



Source: United Nations

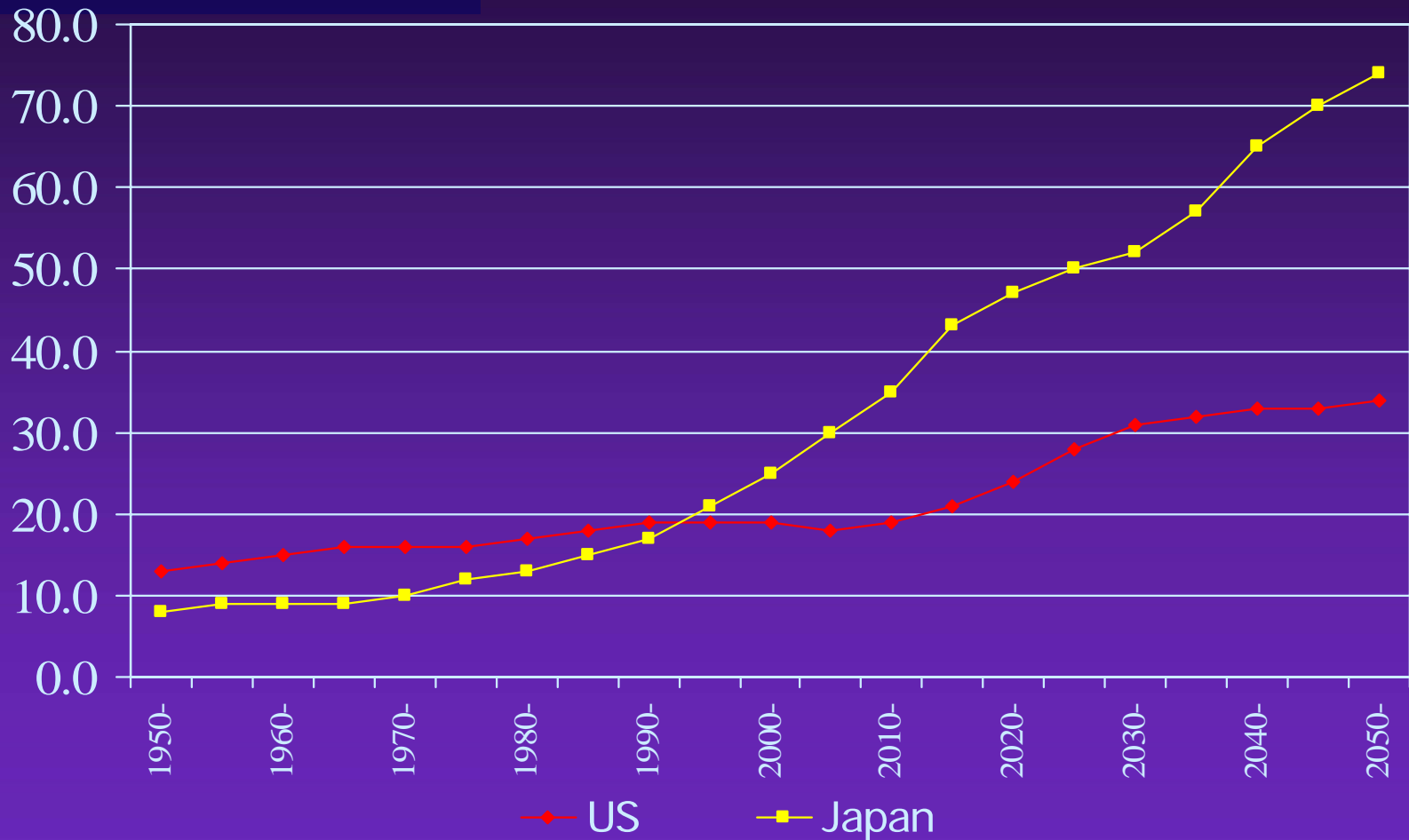
Labor Force Growth



Source: United Nations

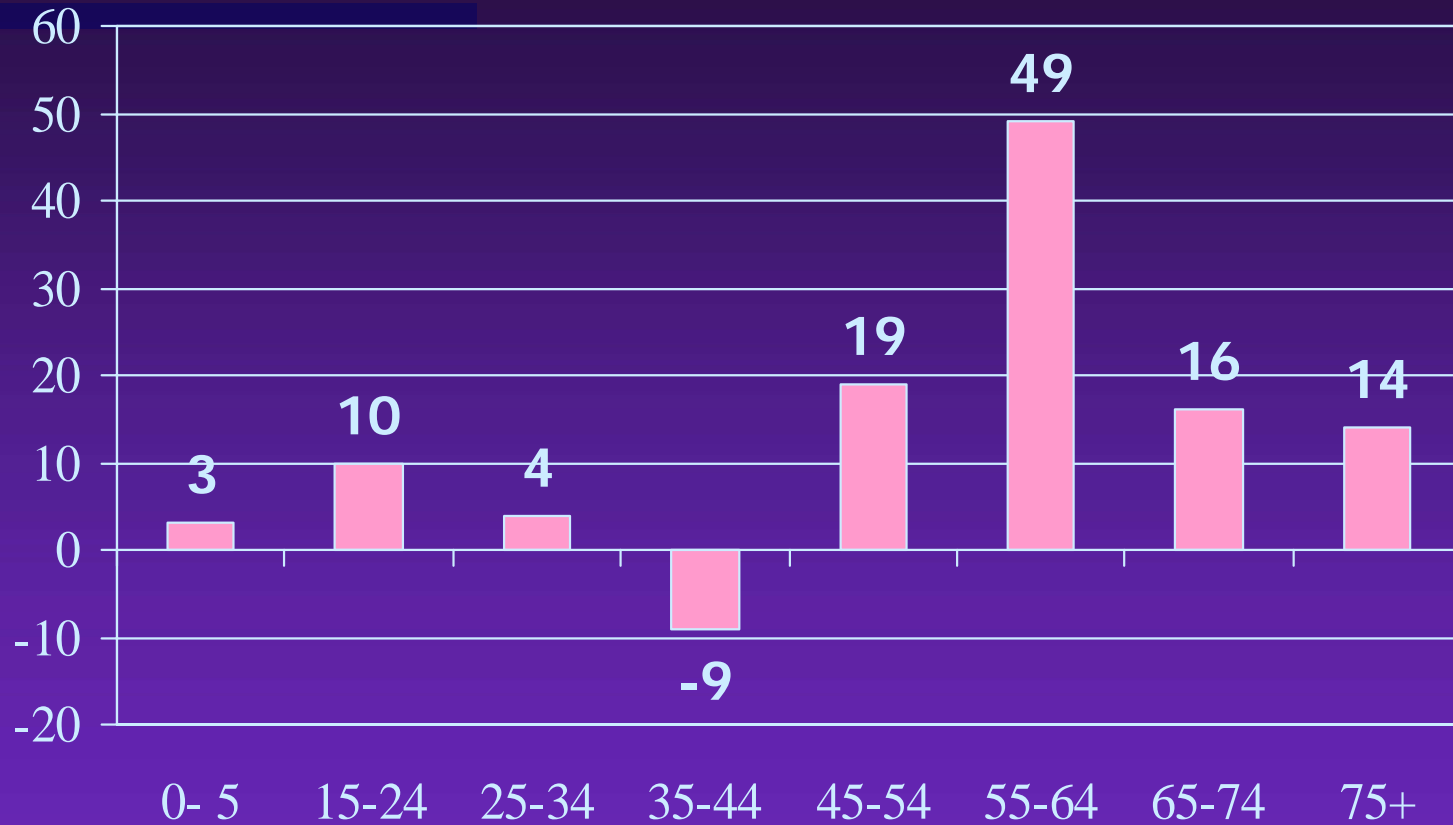
Age Dependency

Persons age 65+ per 100 persons age 16-64

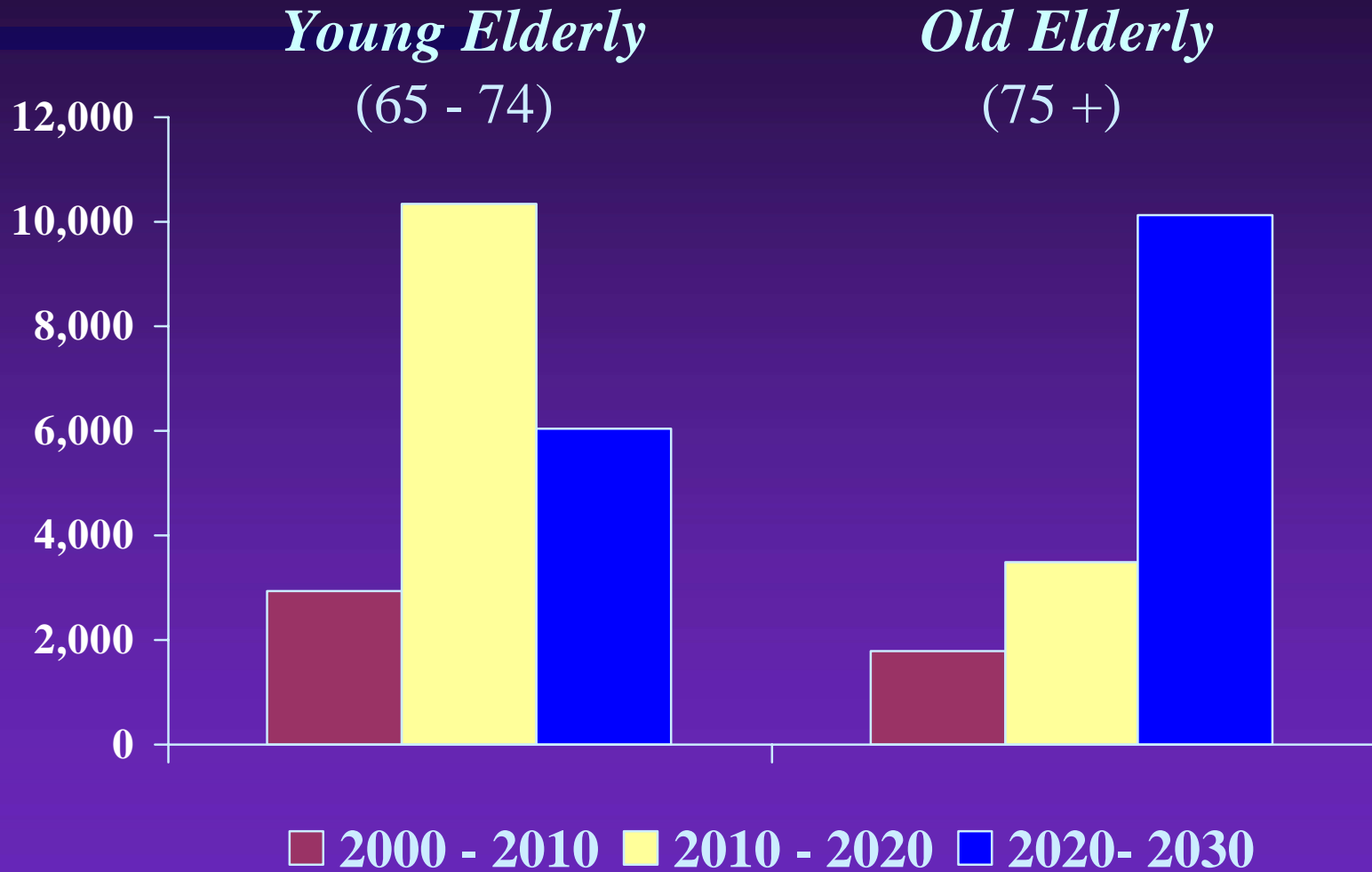


Source: United Nations

US Growth by Age 2000-10



Population Changes in the Next 3 Decades



Frey

Source: William H. Frey

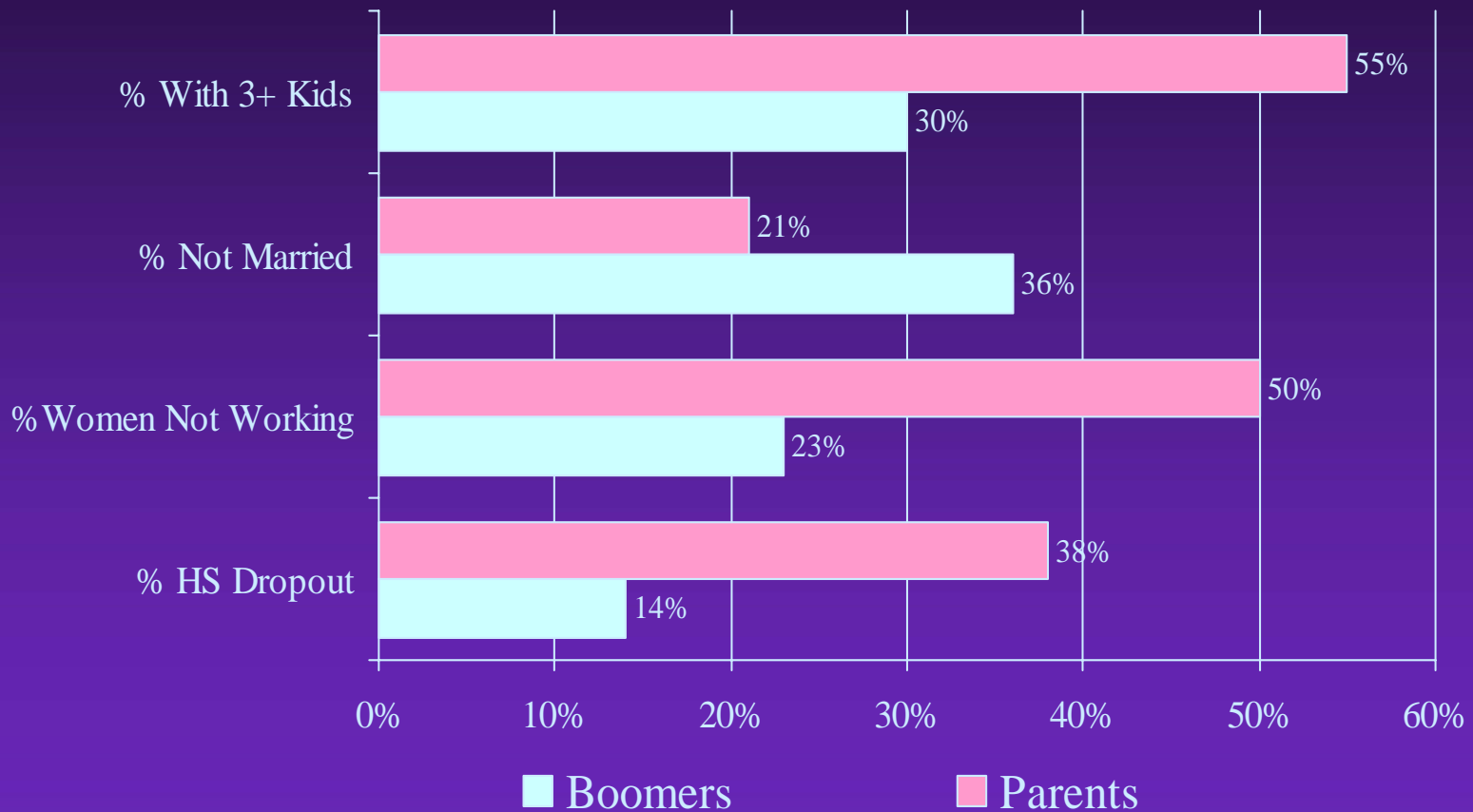
Population Changes in the Next 3 Decades



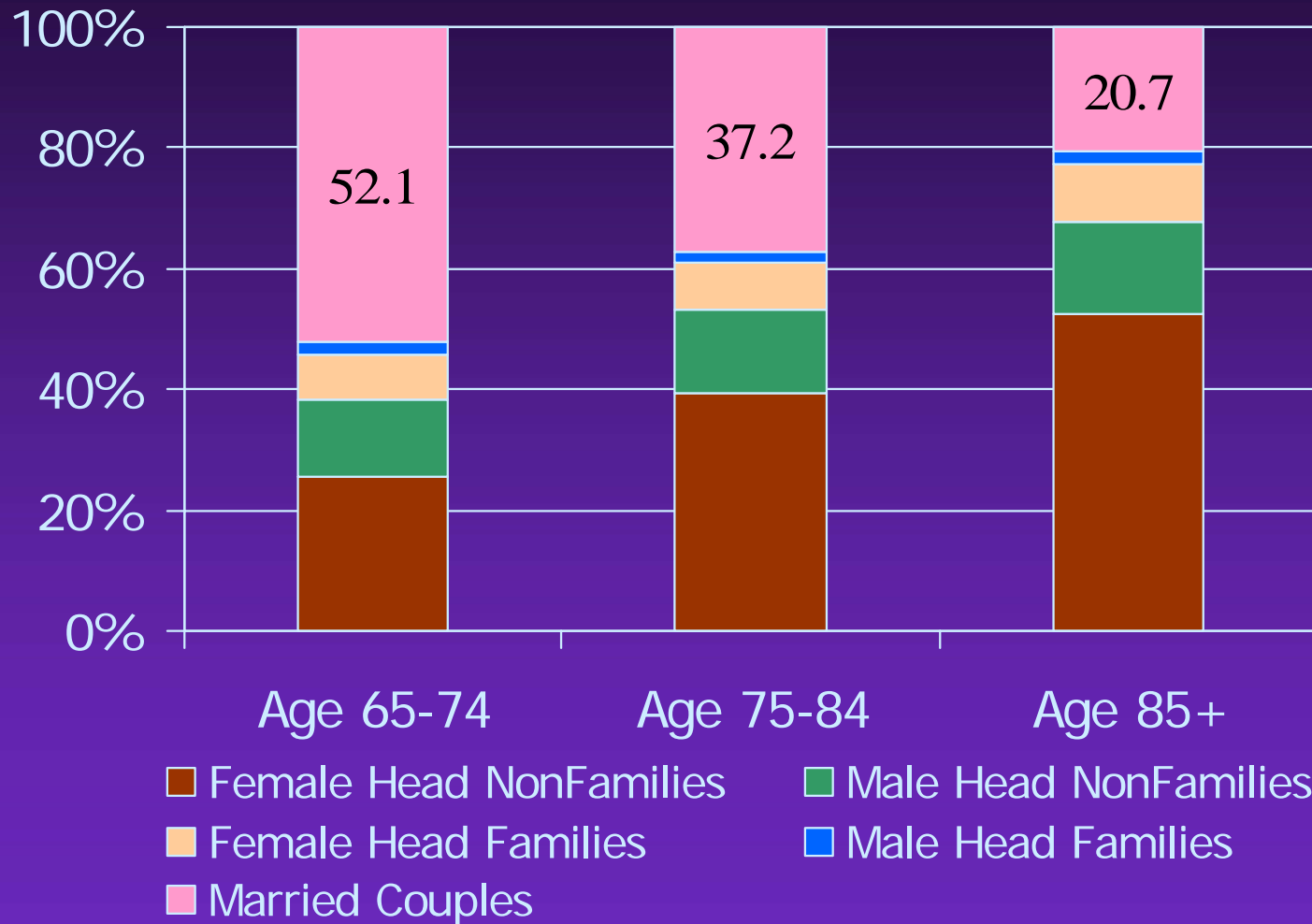
Frey

Source: William H. Frey

Boomers vs. Parents at Midlife

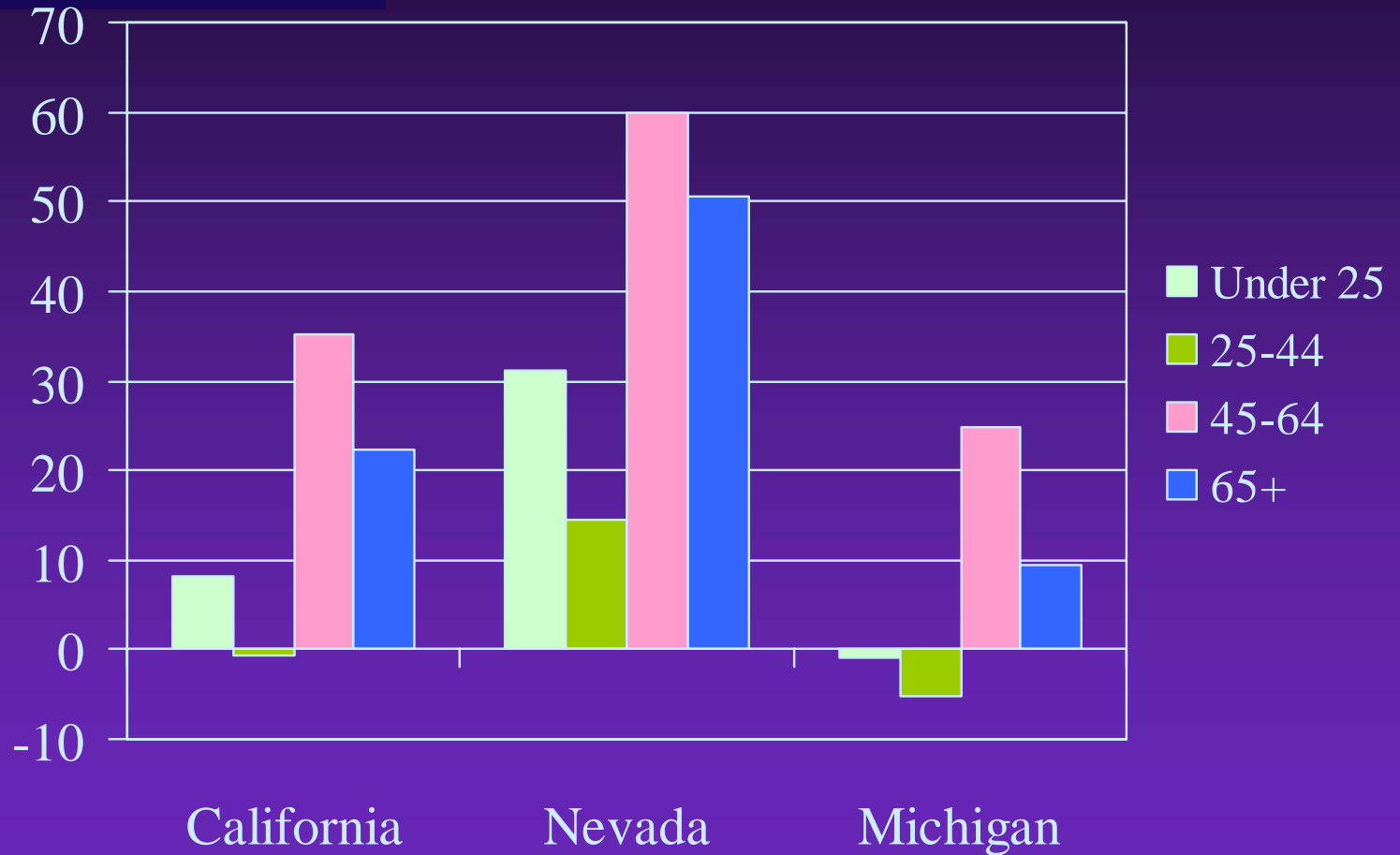


Household Types: Older Age Groups

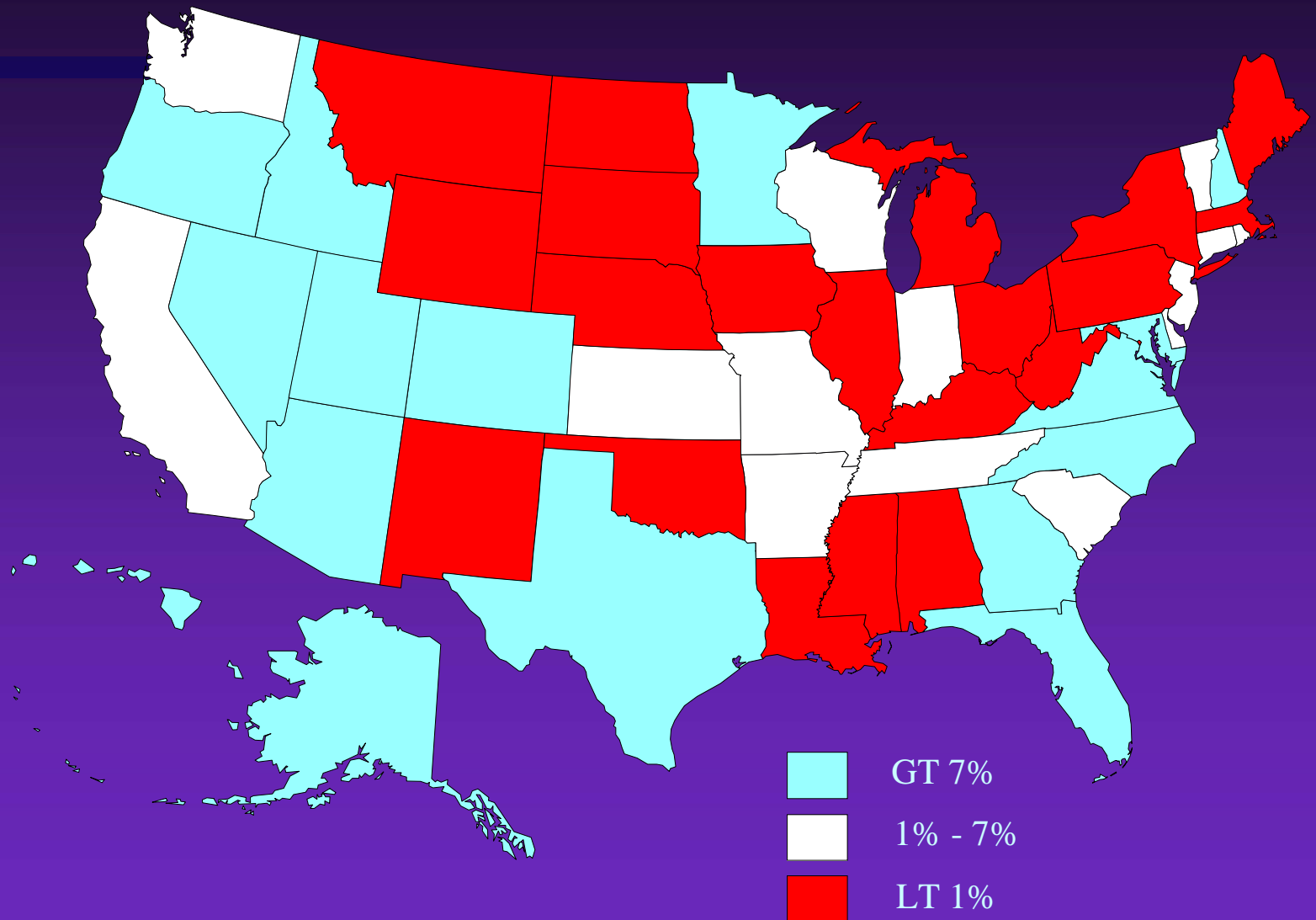


Source: William H. Frey analysis

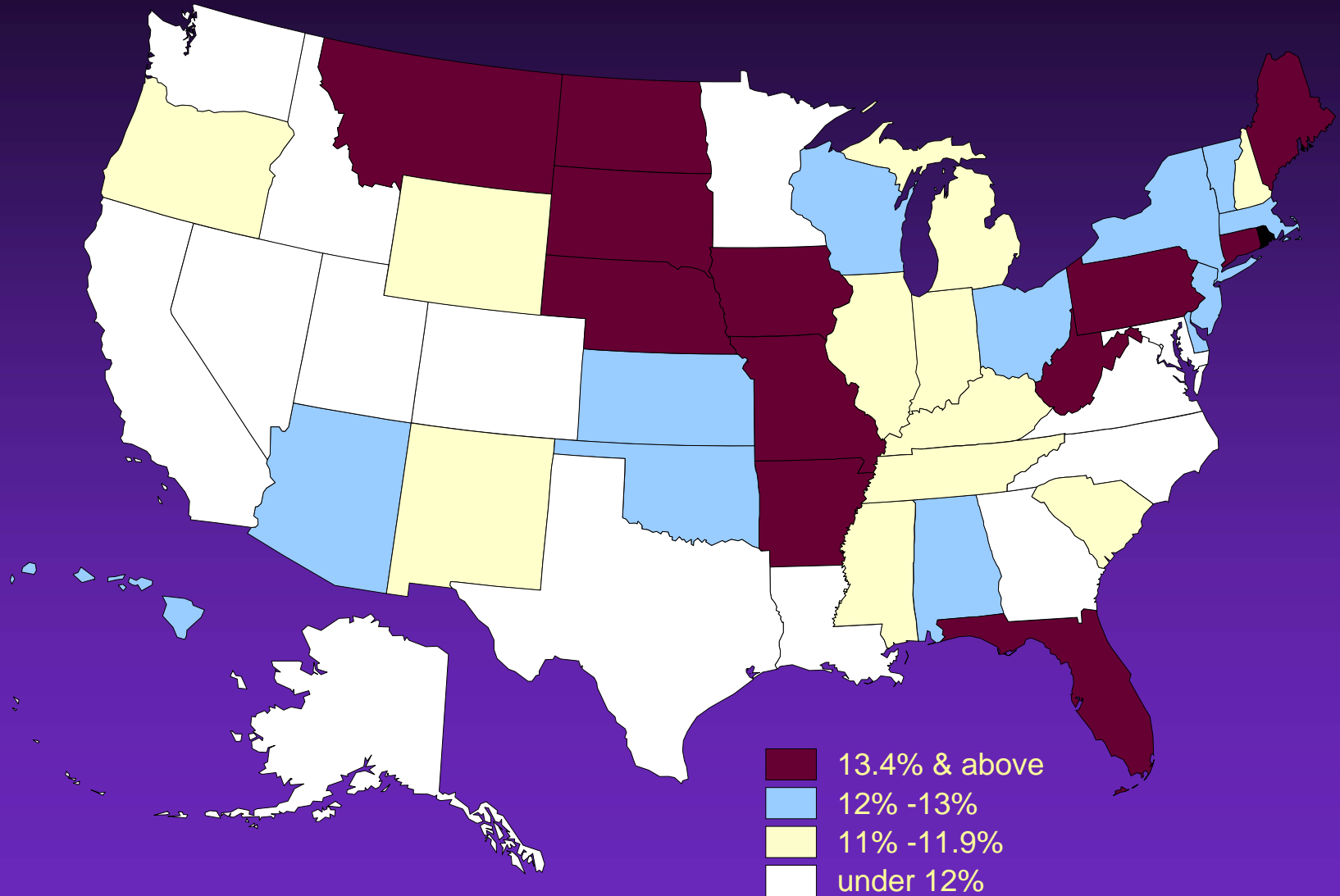
Growth by Age, 2000-10



2000-10 Growth: Under Age 35

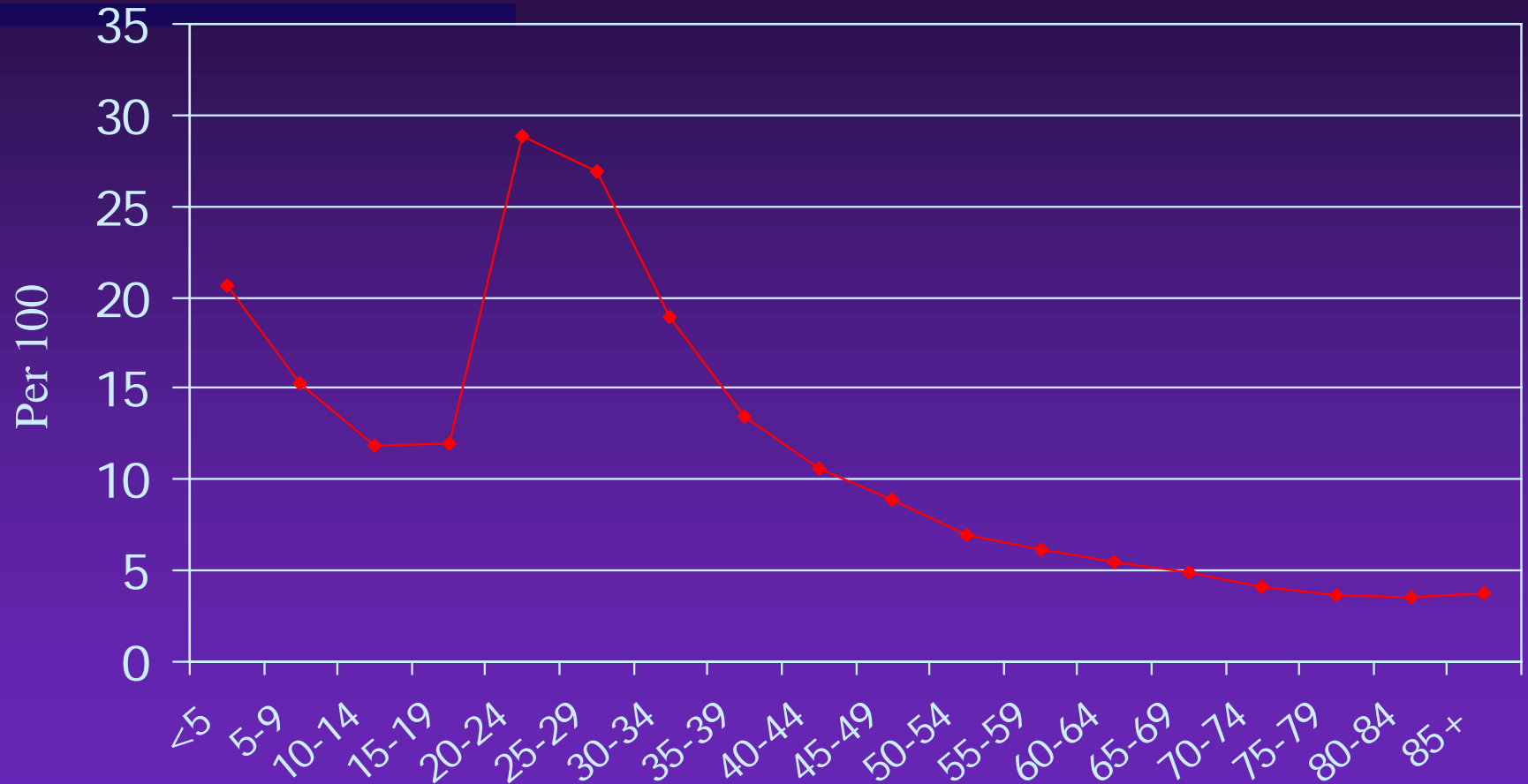


Percent 65+ population for States, 2005



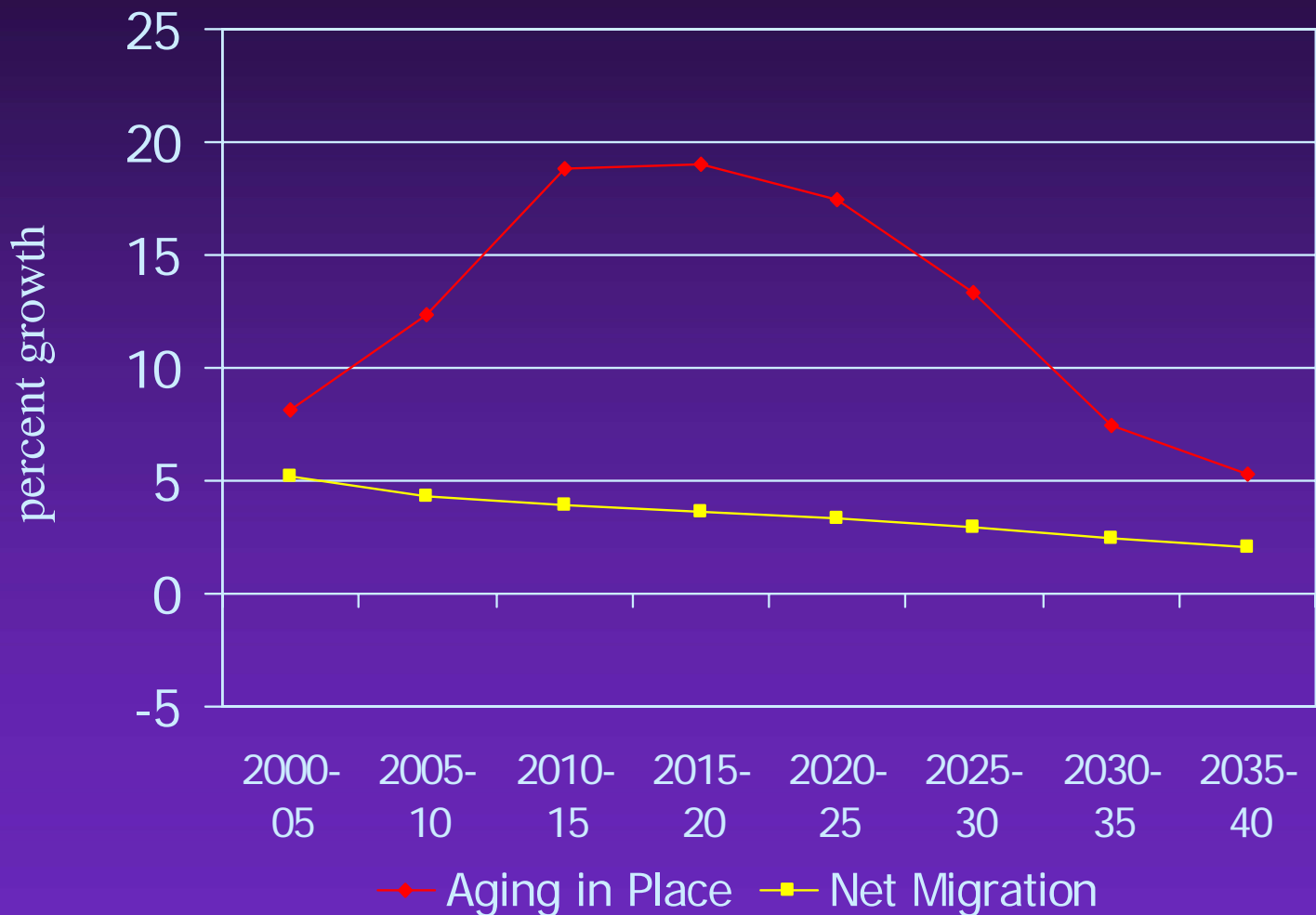
Source: William H. Frey analysis

Rates of Migration by Age



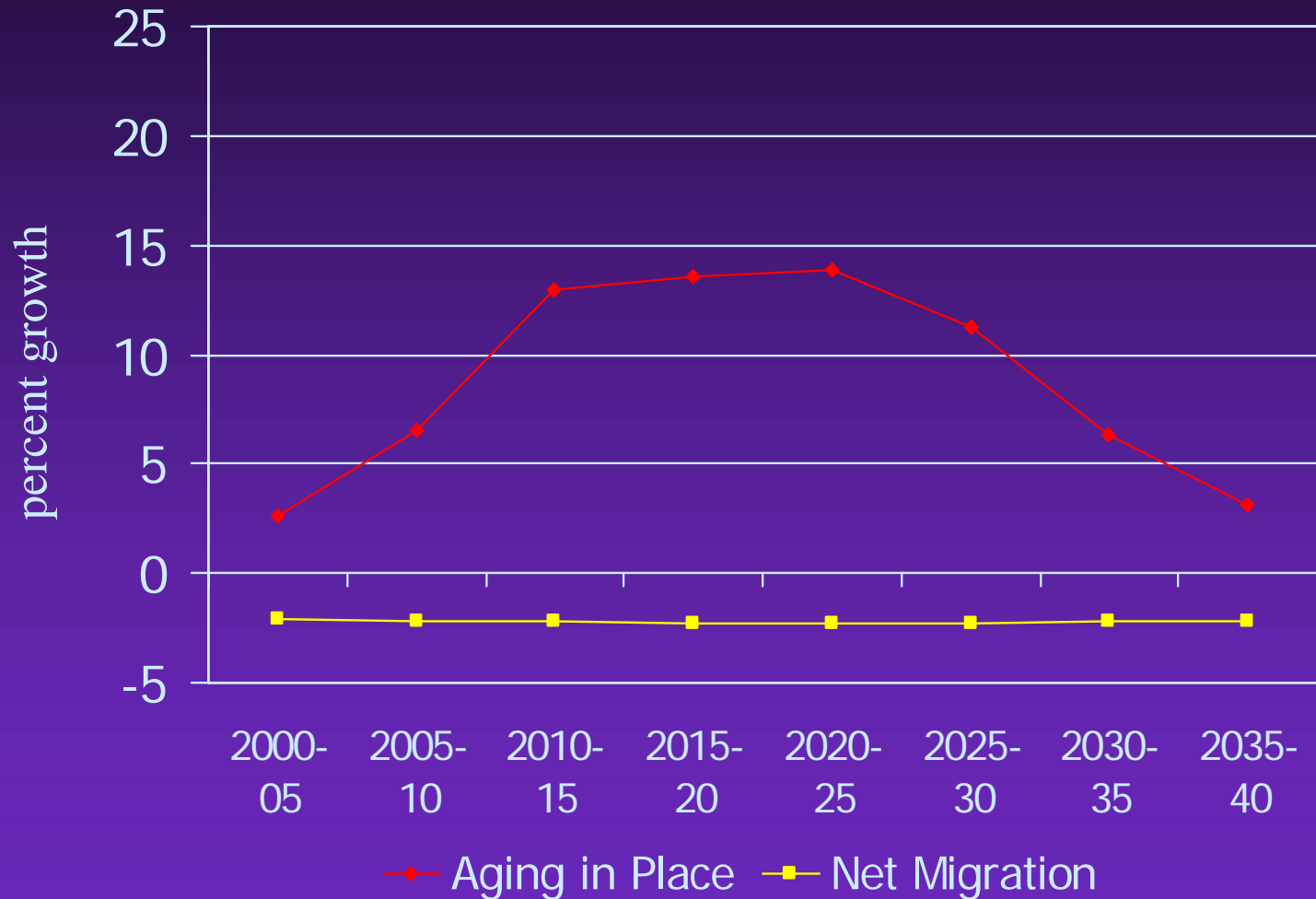
Source: William H. Frey analysis

Arizona Projections: Aging in Place and Migration



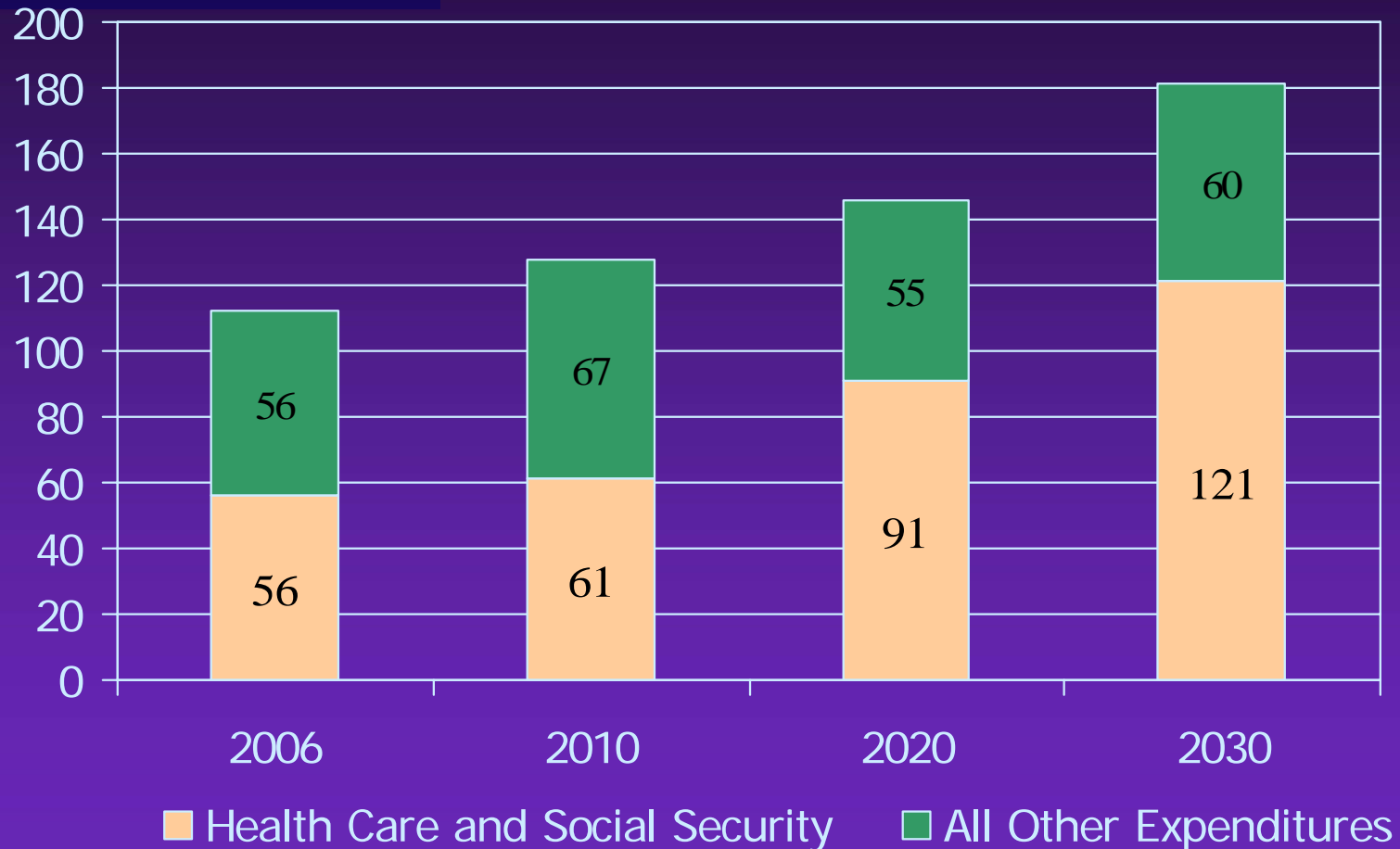
Source: William H. Frey analysis

New York Projections: Aging in Place and Migration



Source: William H. Frey analysis

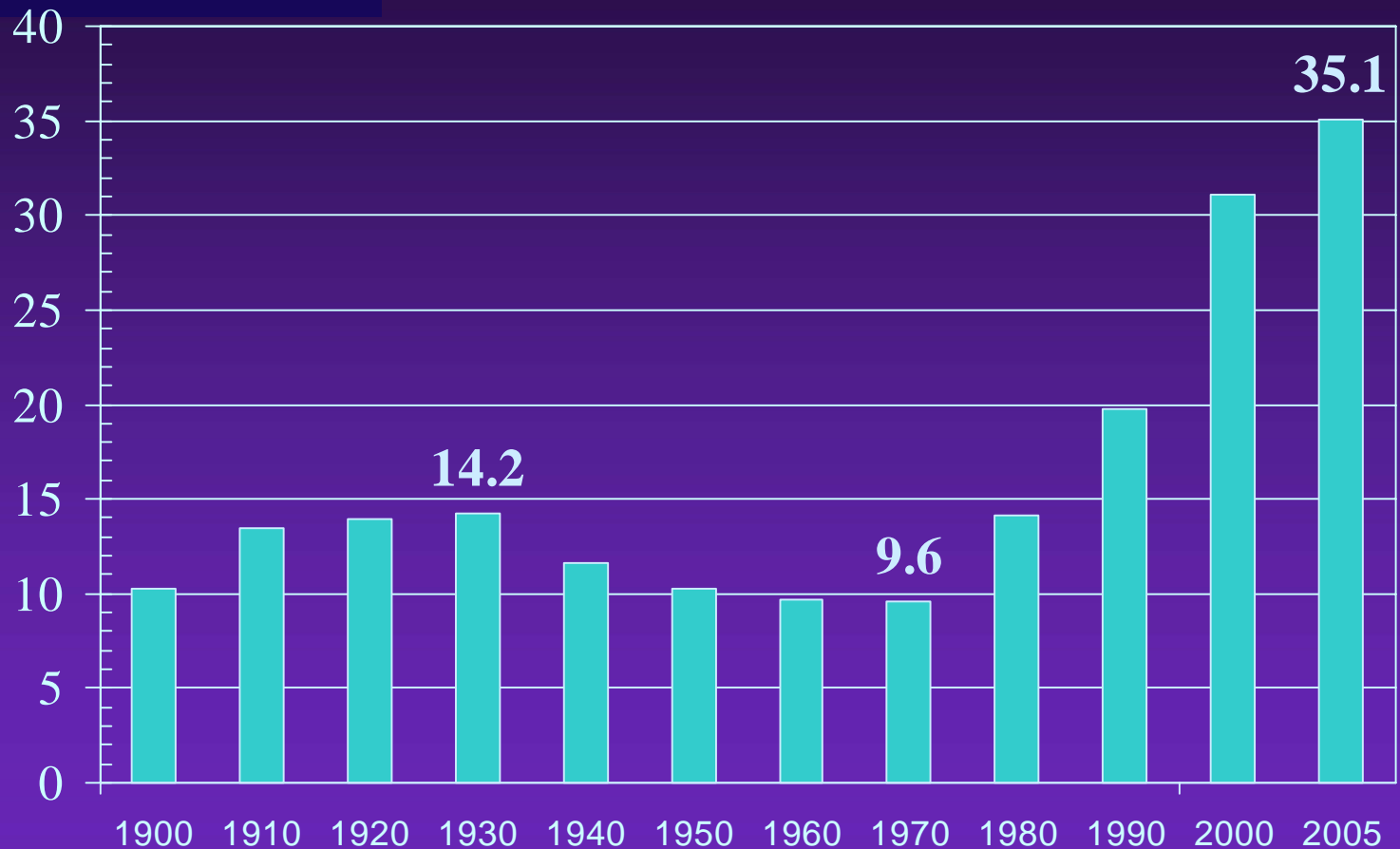
US Federal Budget Allocation as Percent of Projected Federal Revenue



Source: Dowell Myers, Boomers and Seniors

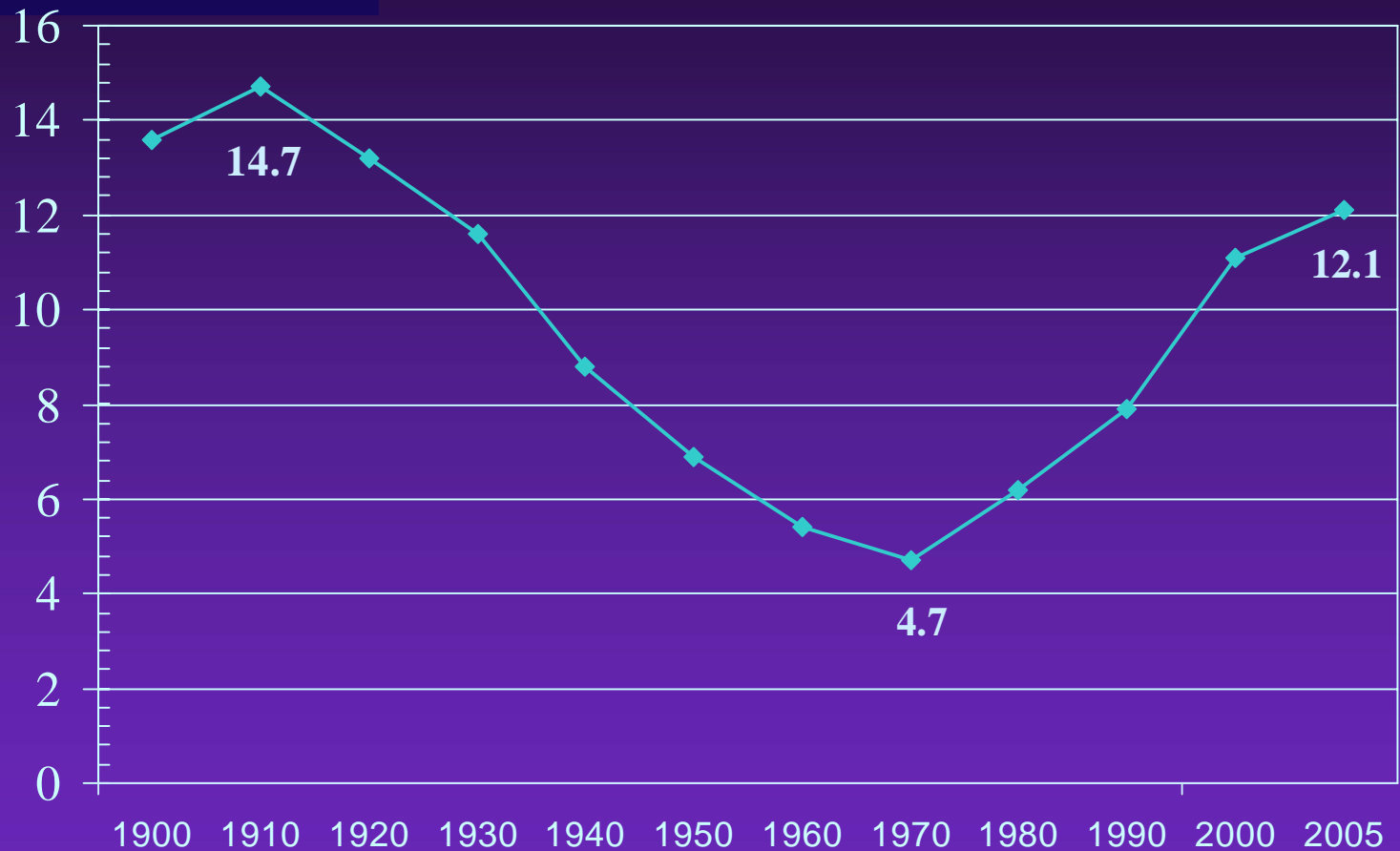
Immigrants in the US, 1900 - 2005

in millions



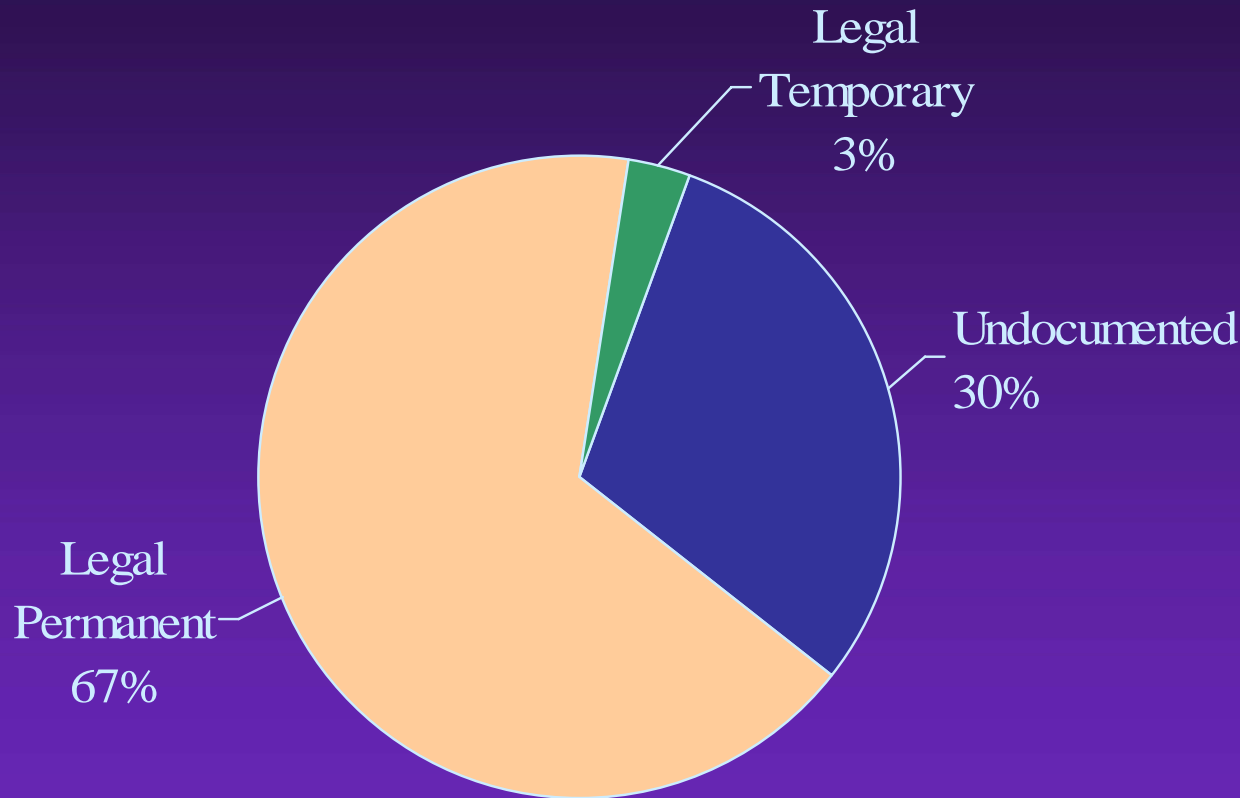
Source: William H. Frey, Brookings Institution

Immigrant Share of US Population



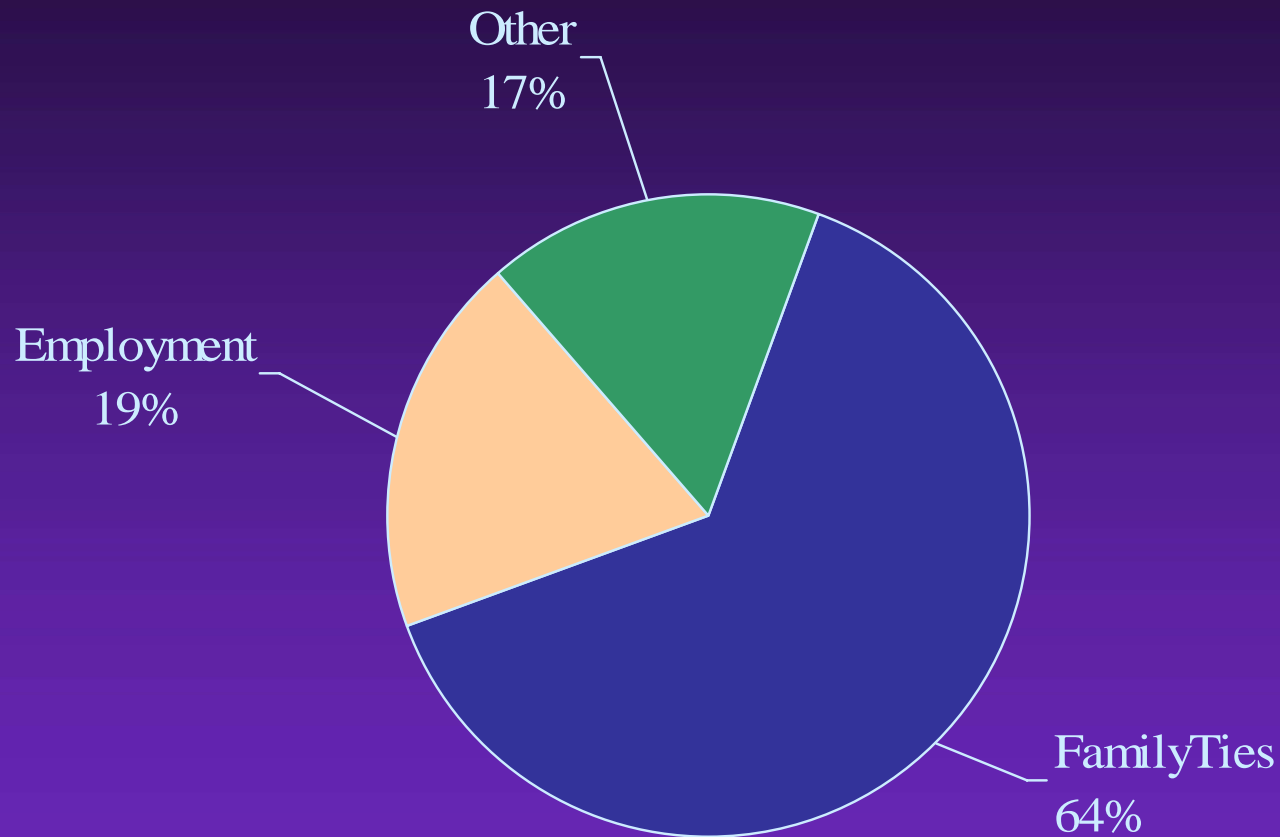
Source: US Census sources

Types of US Foreign Born, 2005



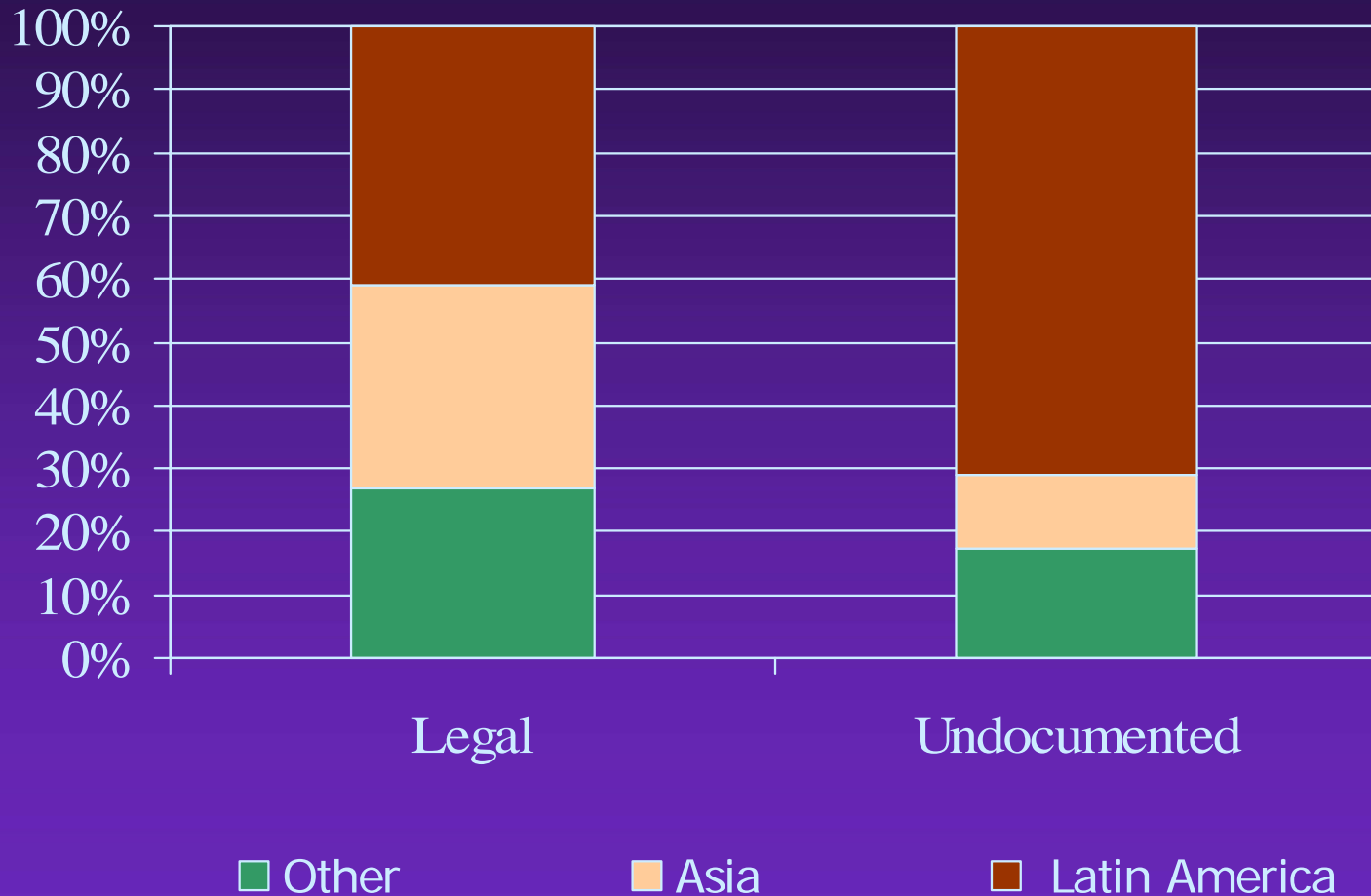
Source: Jeffrey Passel, Pew Hispanic Center

Legal Permanent Immigrants, 2003-05



Source: Population Reference Bureau

Immigrant Origins



Source: Population Reference Bureau, Pew Hispanic Center

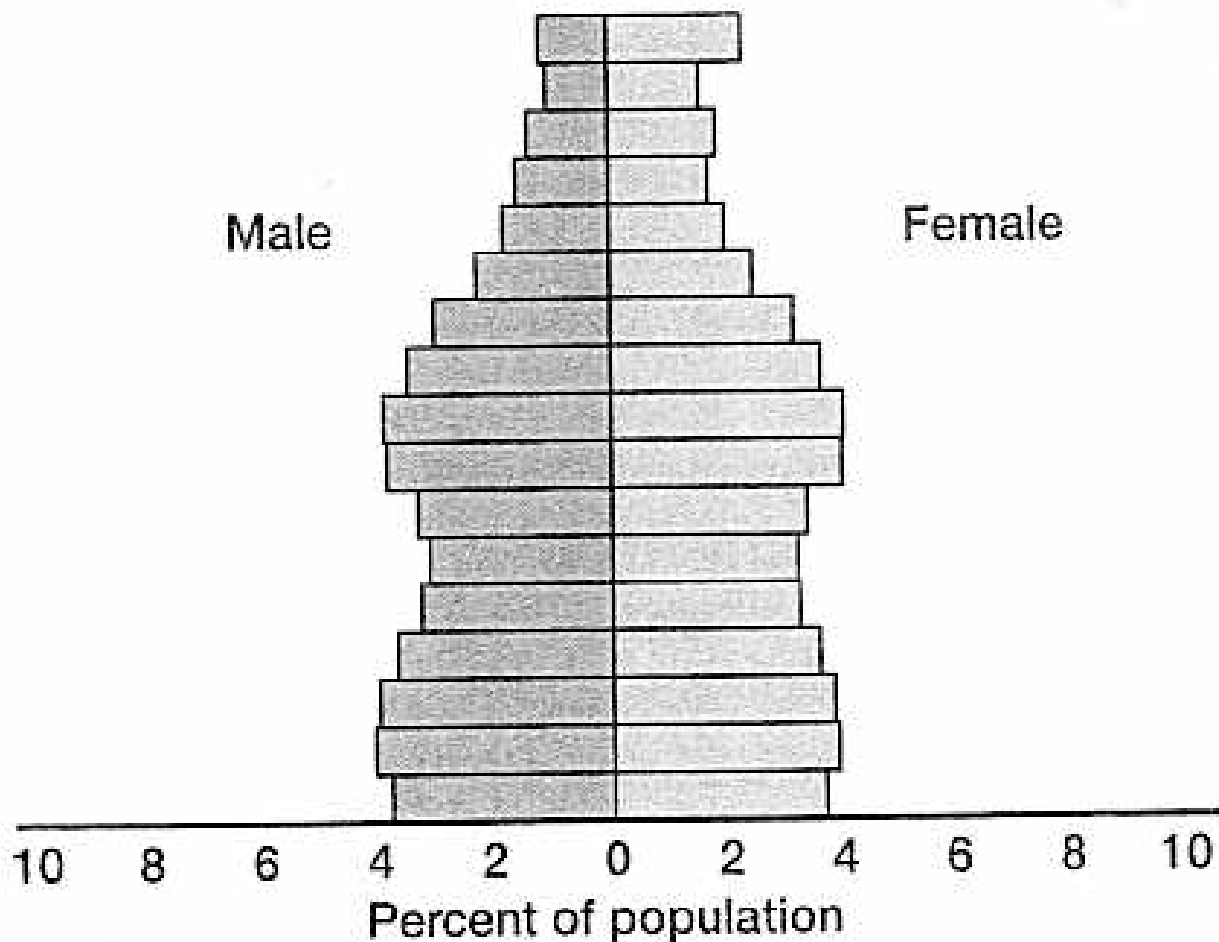
U.S.-born

Age

80+
75-79
70-74
65-69
60-64
55-59
50-54
45-49
40-44
35-39
30-34
25-29
20-24
15-19
10-14
5-9
0-4

Male

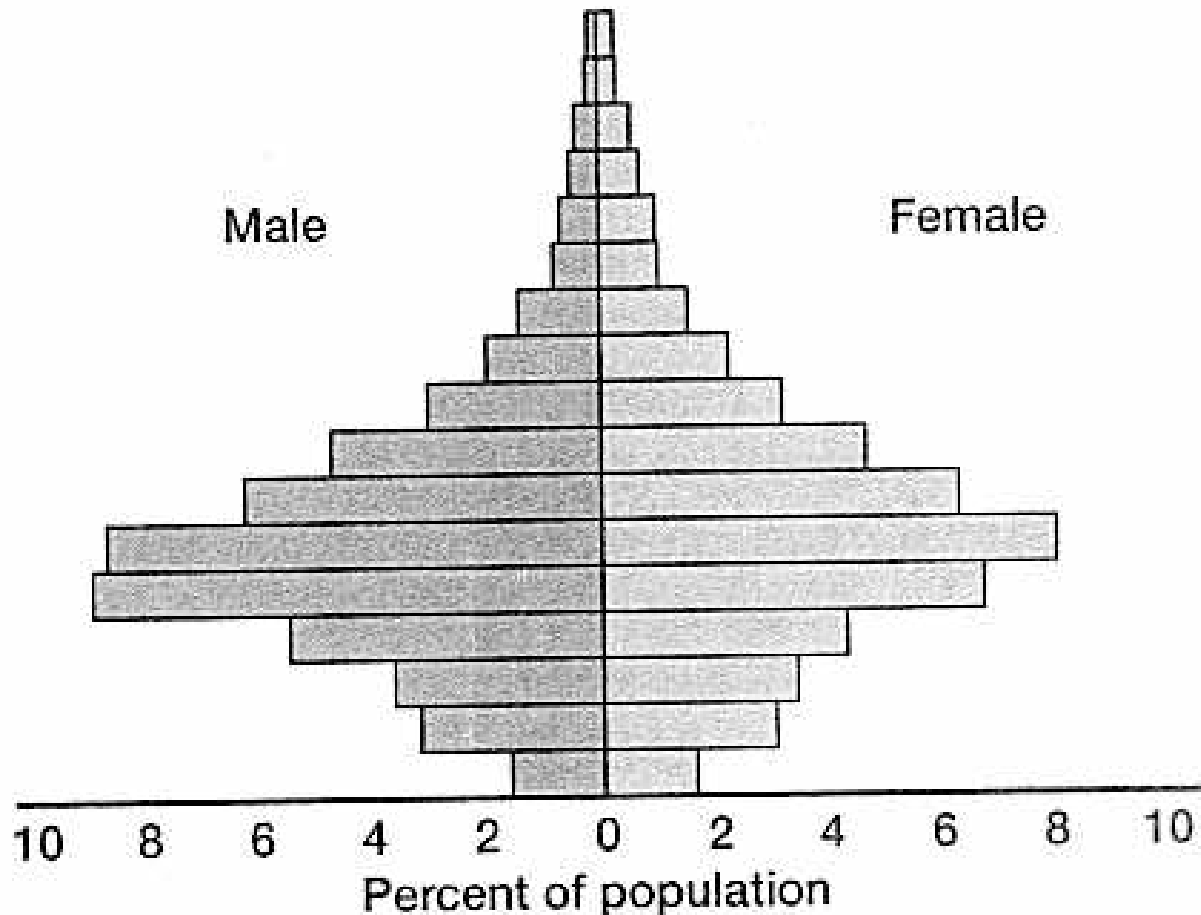
Female



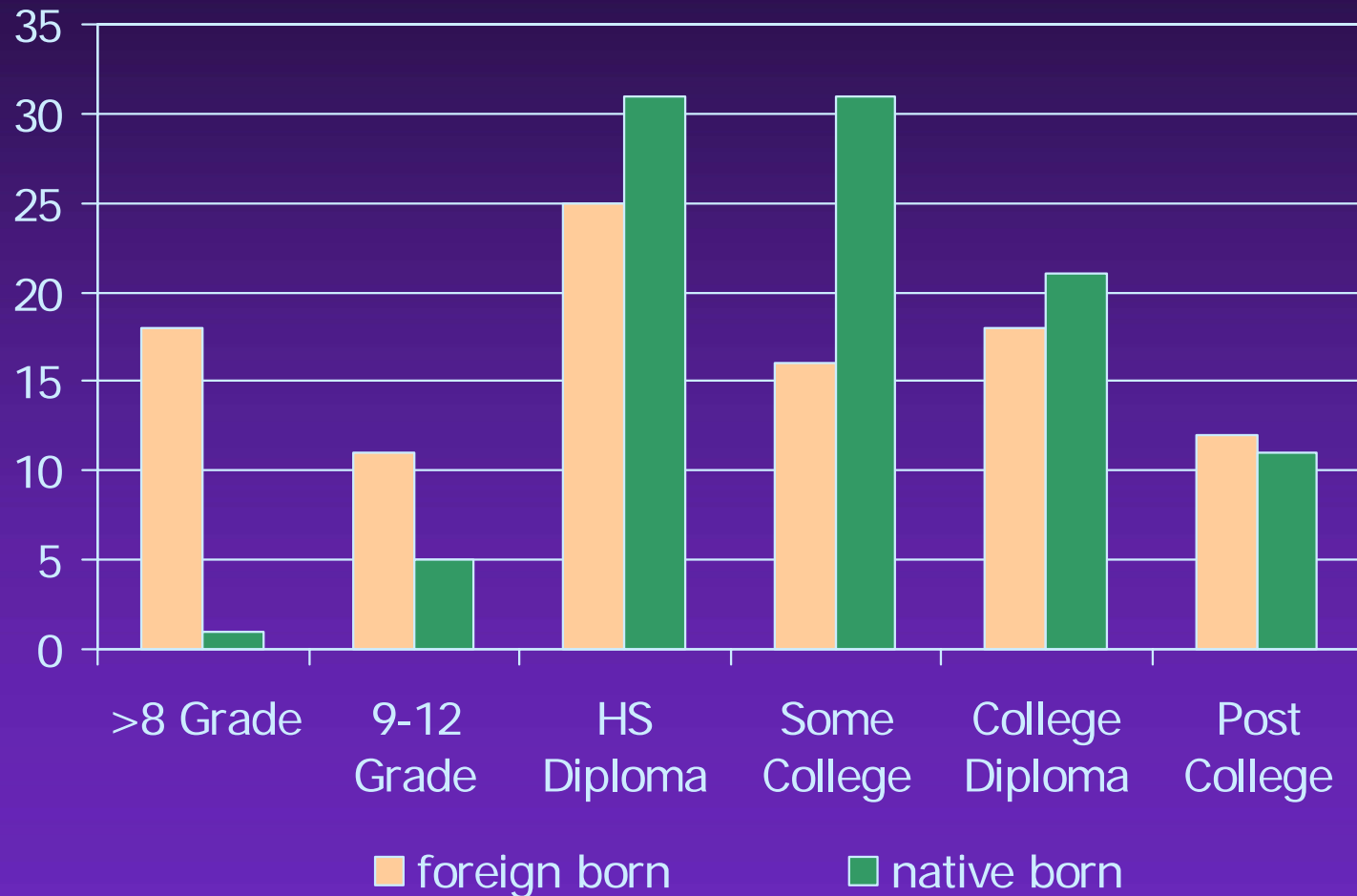
Recent immigrants

Age

80+
75-79
70-74
65-69
60-64
55-59
50-54
45-49
40-44
35-39
30-34
25-29
20-24
15-19
10-14
5-9
0-4

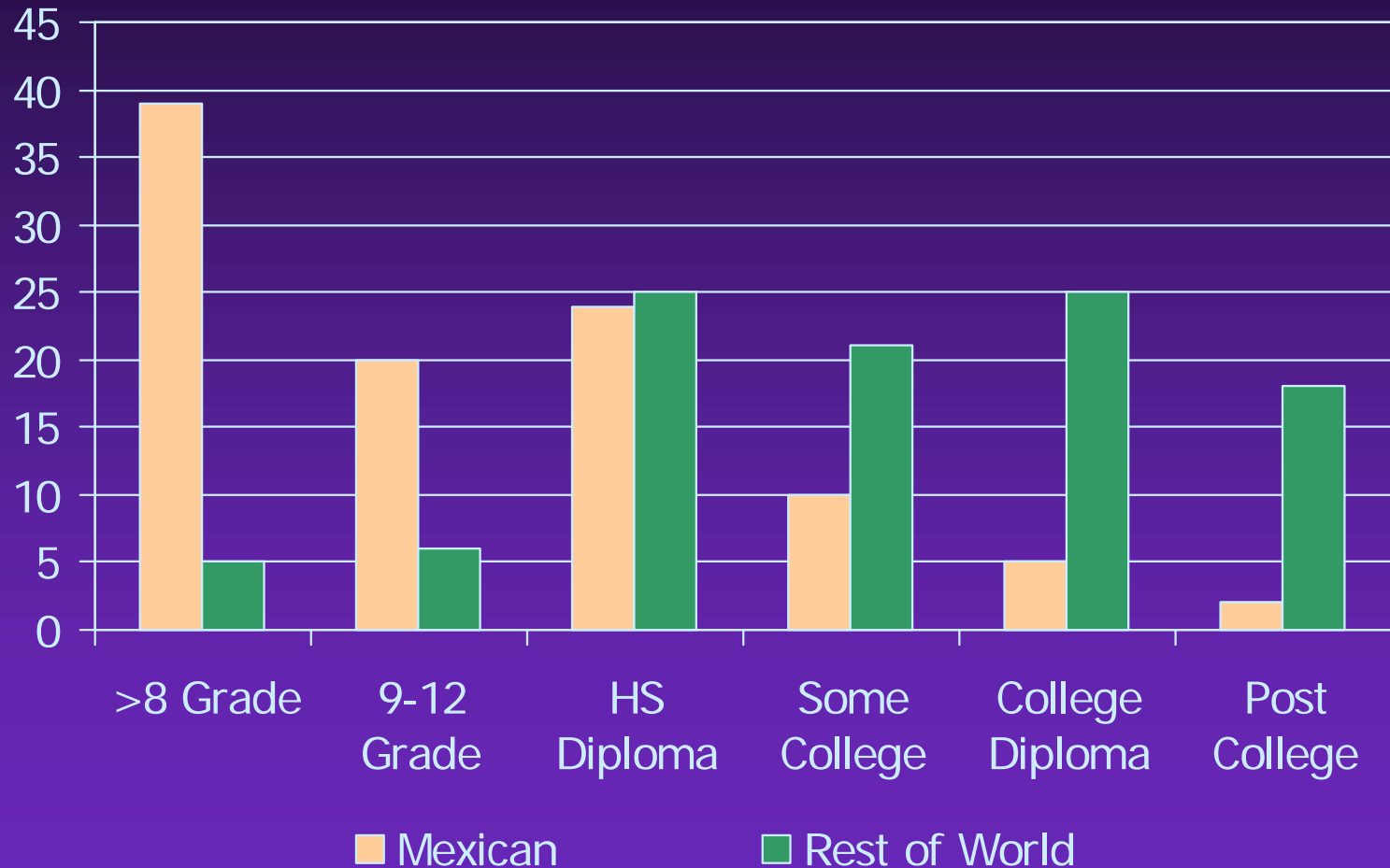


Education: Immigrants vs Natives



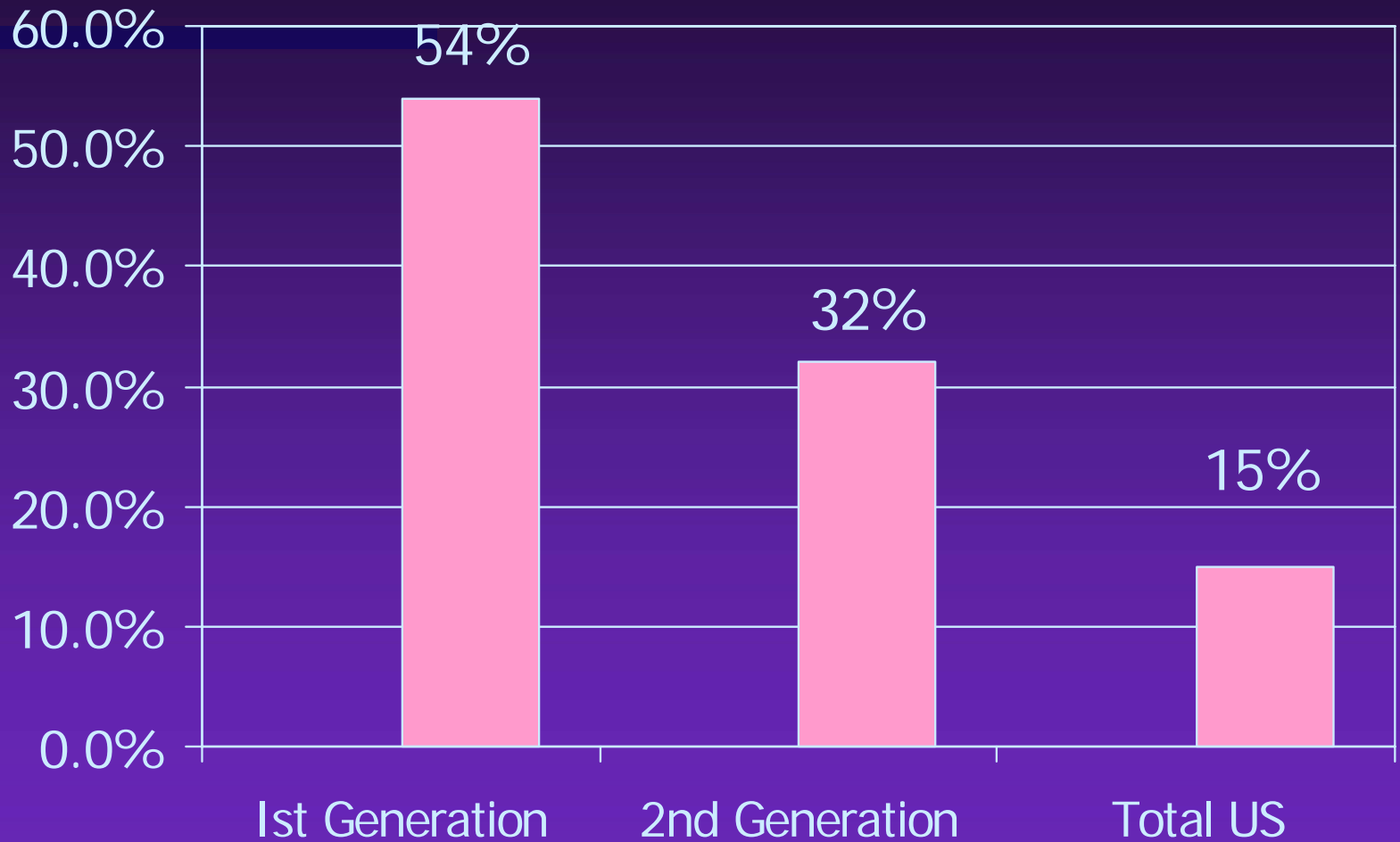
Source: Congressional Budget Office Analysis

Immigrant Education: Mexican vs. Other Origins



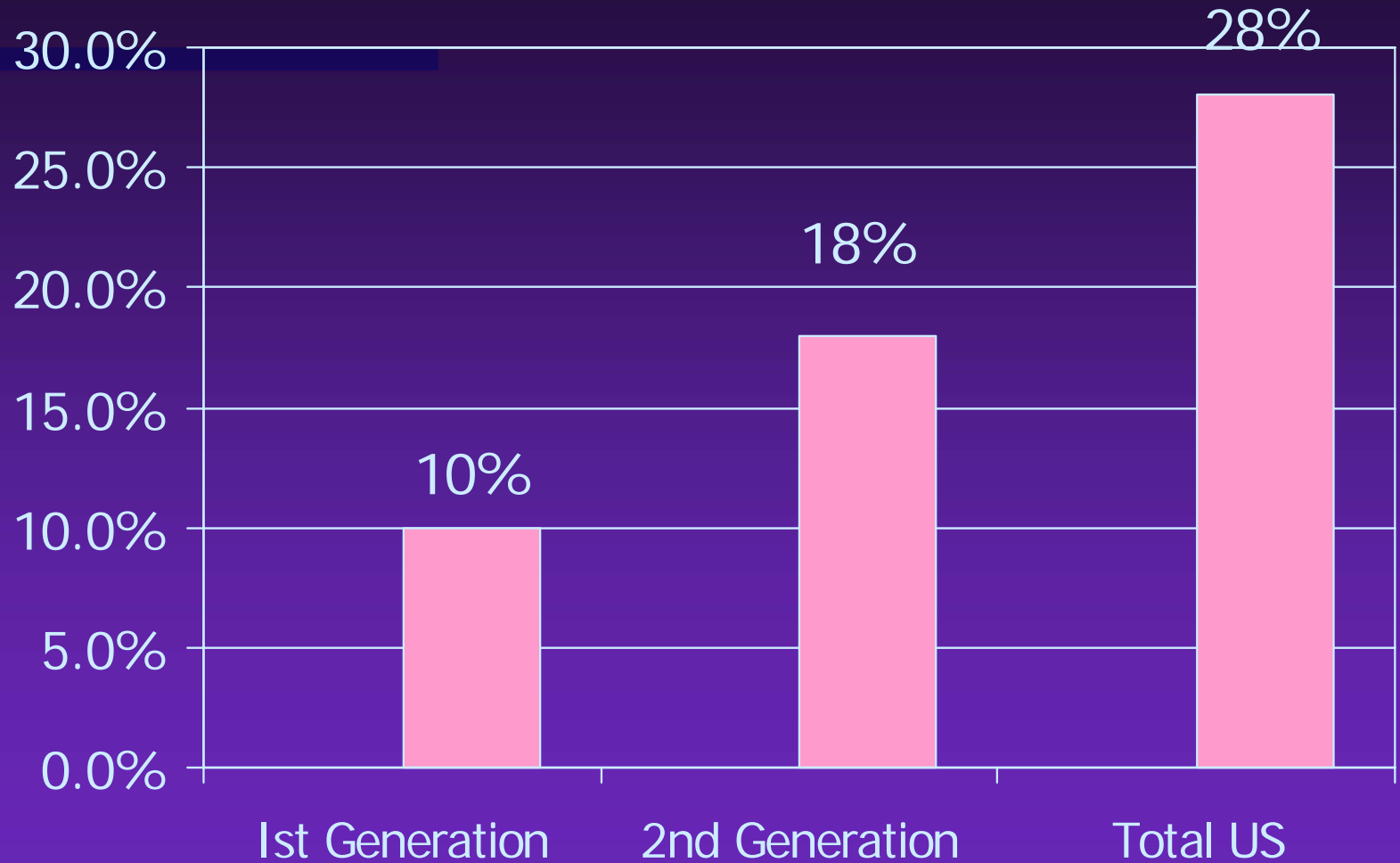
Source: Congressional Budget Office Analysis

Hispanics: Less than High School



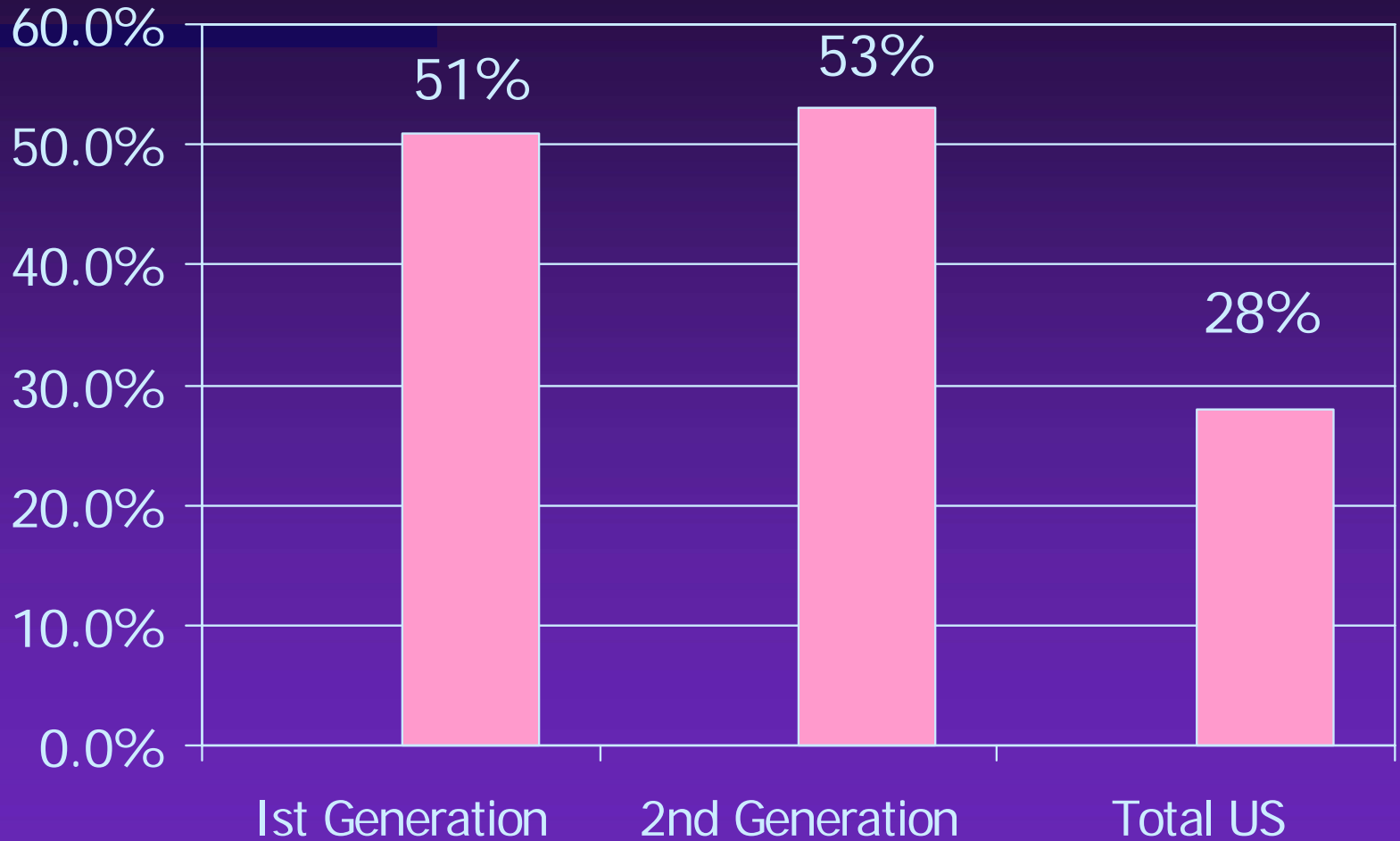
Source: William H. Frey analysis

Hispanics: College Graduates



Source: William H. Frey analysis

Asians: College Graduates



Source: William H. Frey analysis

Most Prevalent Jobs

Native Born

Admin Support

Management

Sales

Education

Foreign Born

Production

Construction

Admin Support

Sales

Immigrants - Prevalent Jobs

Mexican

Construction

Production

Maintenance

Transportation

Rest of World

Sales

Admin Support

Management

Production

Undocumented Prevalent Jobs

Cooks

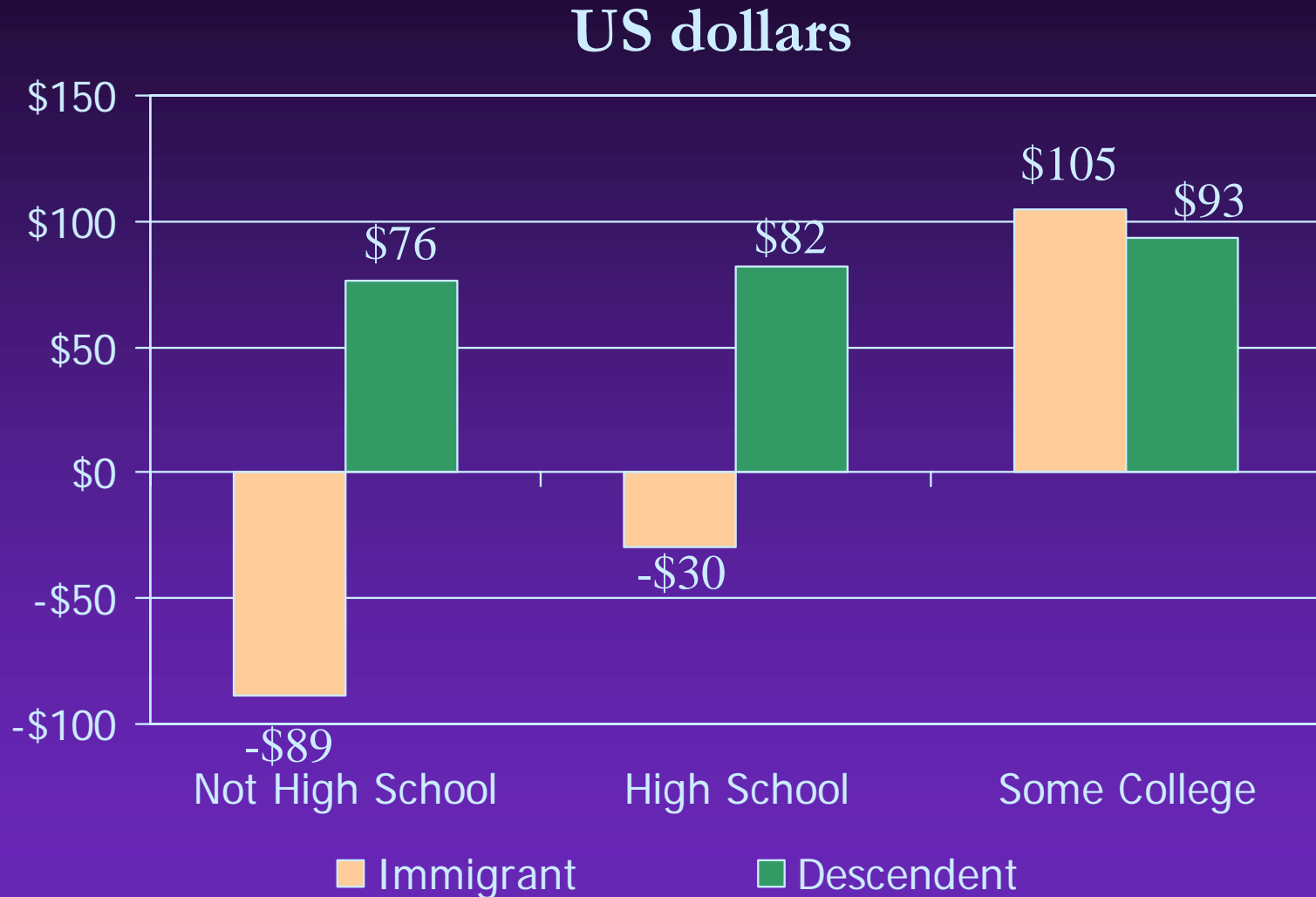
Construction

Maids/Housekeeping

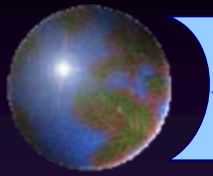
Maintenance

Agriculture

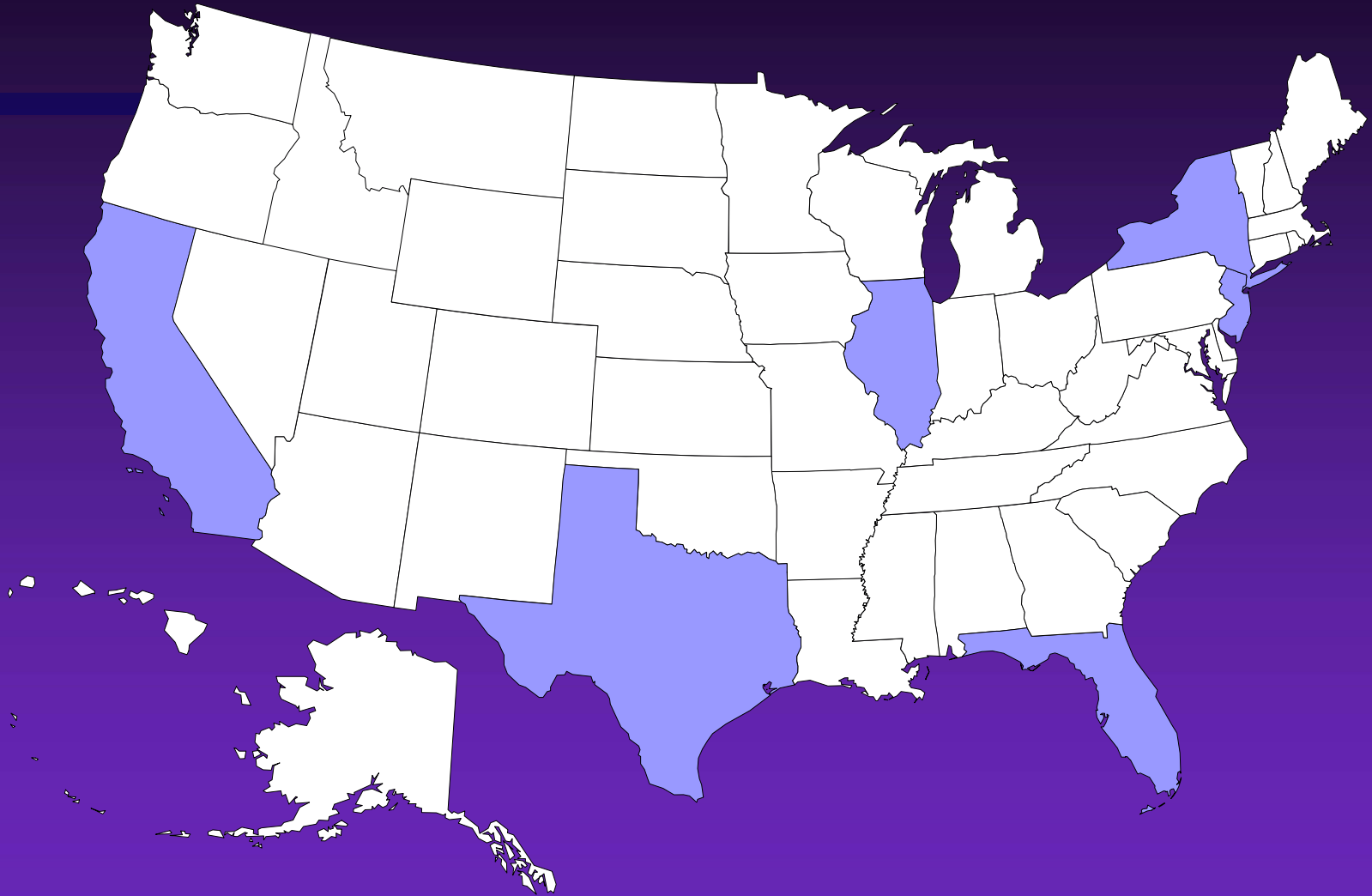
Long Term Fiscal Impact of One Migrant



Source: Population Reference Bureau

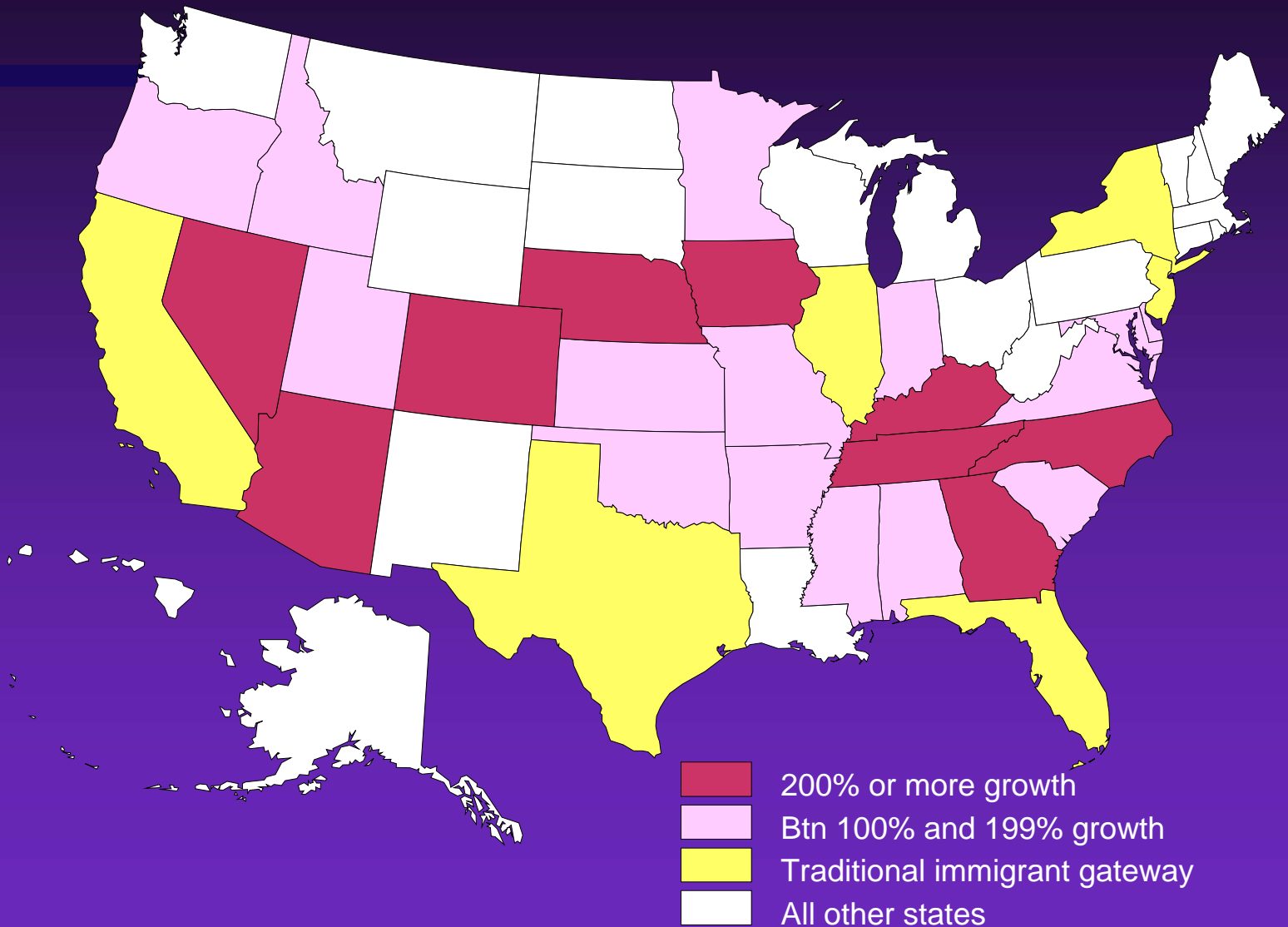


Immigrant Magnet States



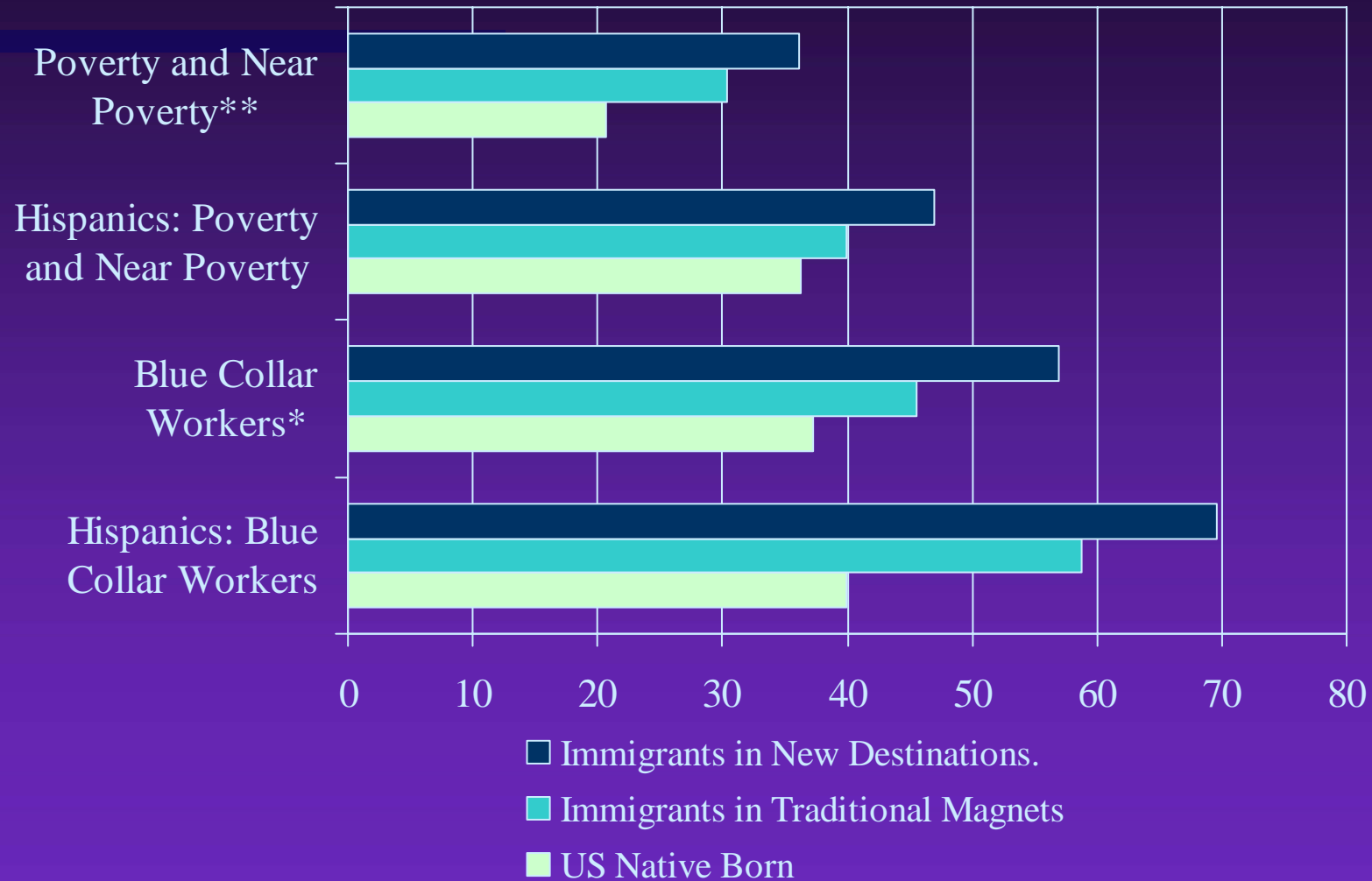
Source: William H. Frey, analysis of 2000 Census

State Immigrant Growth, 1990-2005

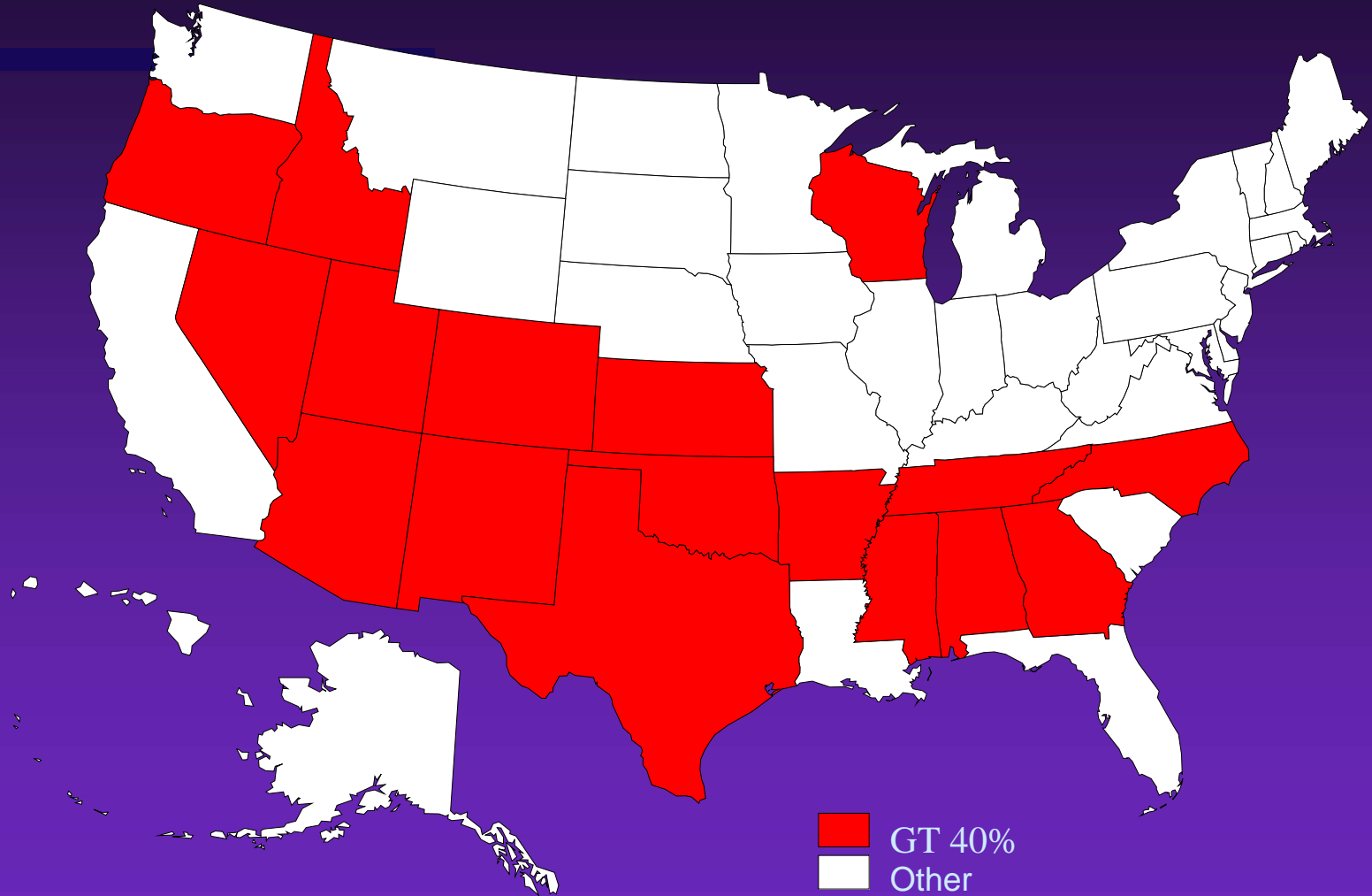


Source: William H. Frey

Immigrants vs Natives: 2005

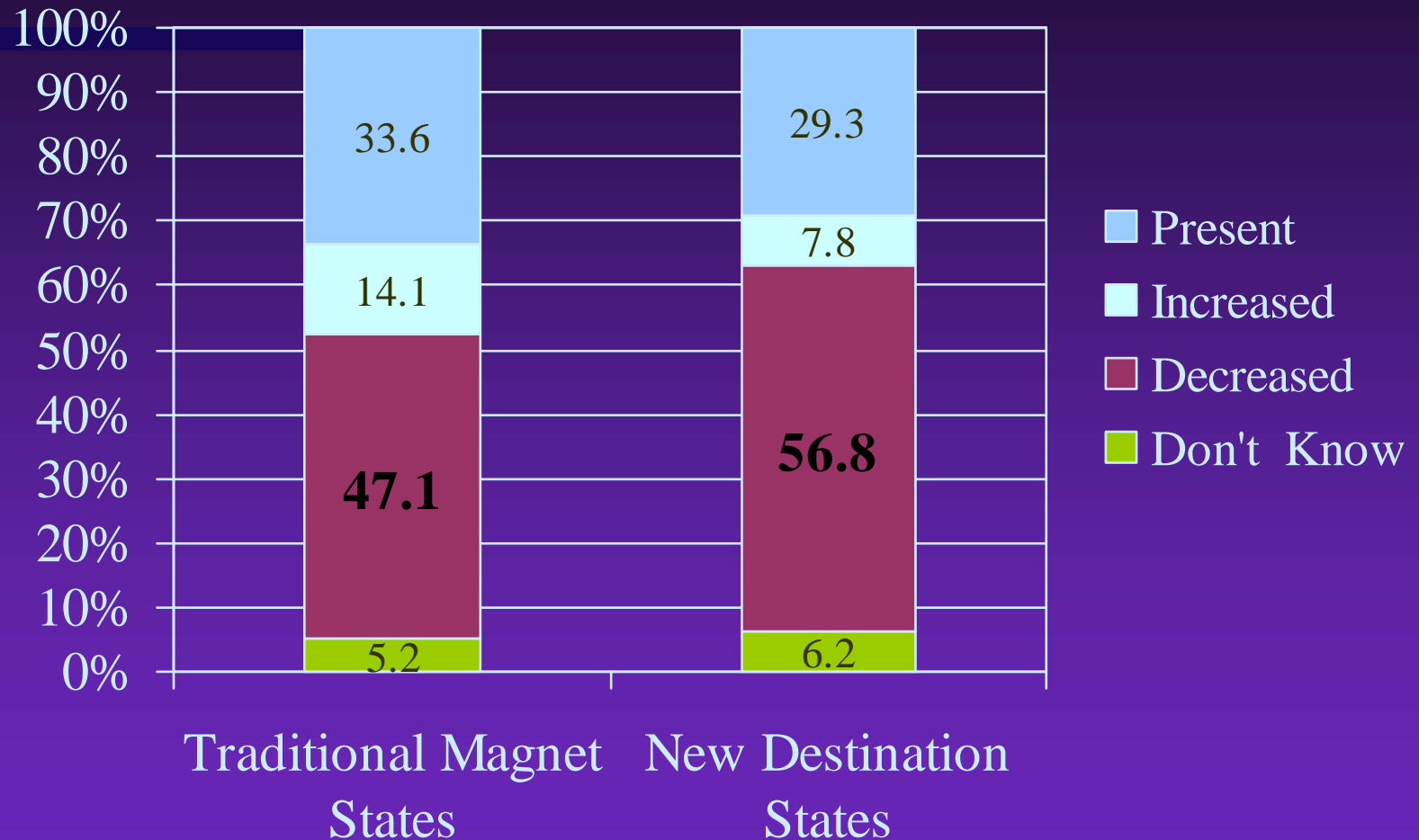


Where Undocumented Dominate Foreign Born



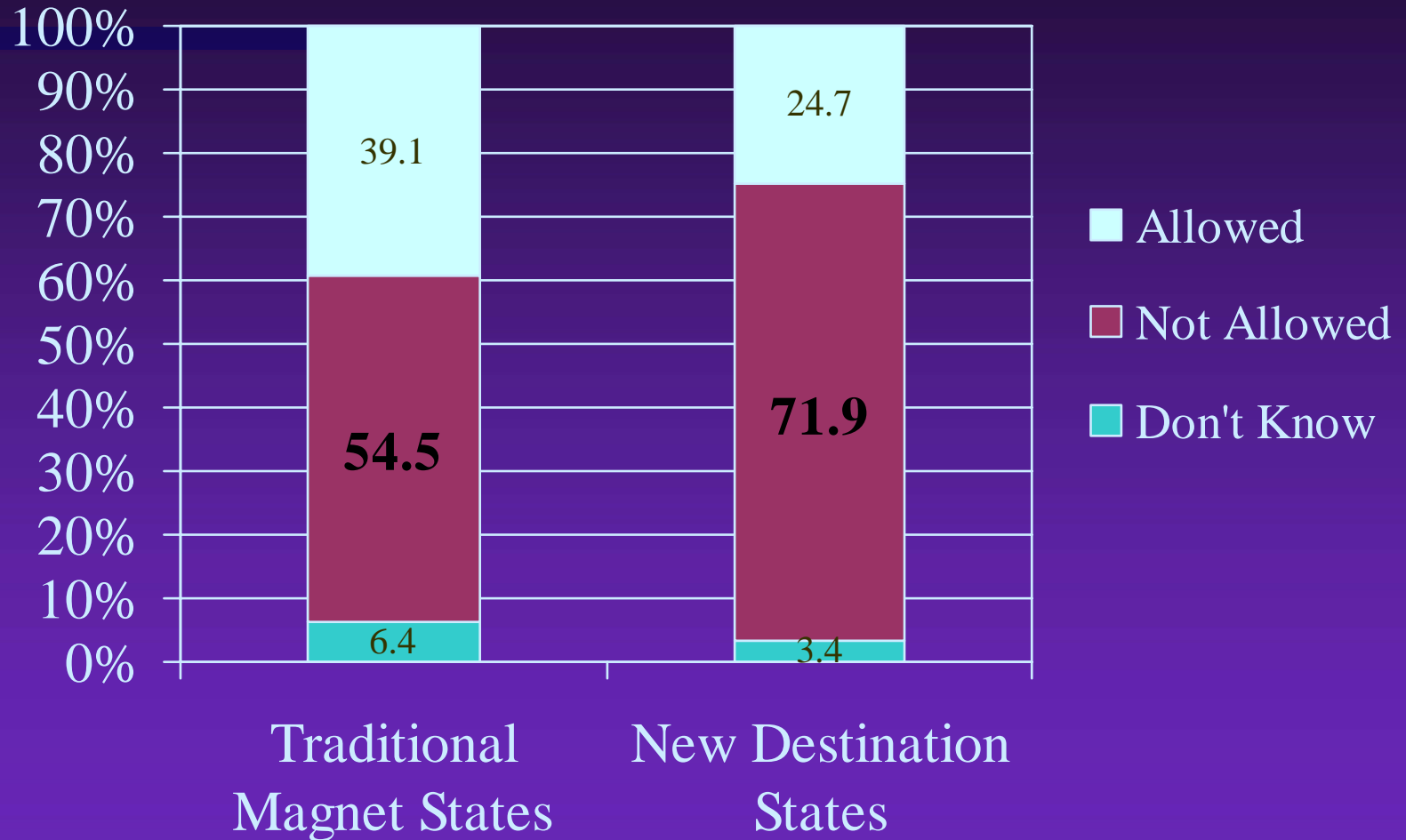
Source: Jeffery Passel, Pew Hispanic Center

Desired US Immigration Levels



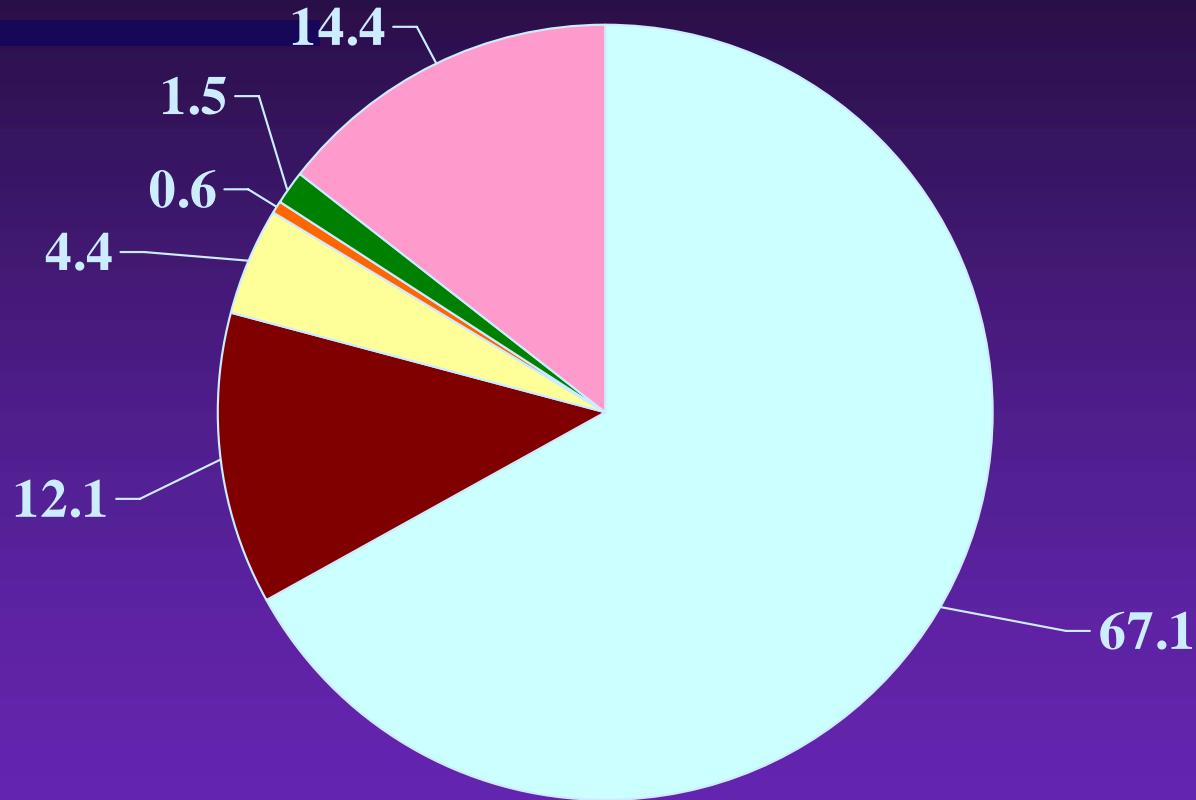
Source: William H. Frey analysis of CBS News Poll, July 29-Aug 2, 2005

3 Year Work Permits for Illegal Immigrants?



Source: William H. Frey analysis of CBS News Poll, July 29-Aug 2, 2005

US Race-Ethnicity

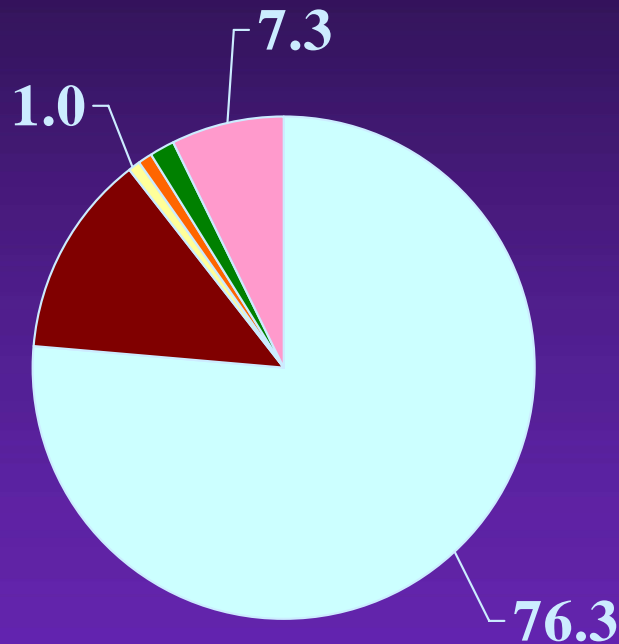


■ White ■ Black ■ Asian ■ Am Indian ■ Mixed Race ■ Hispanic

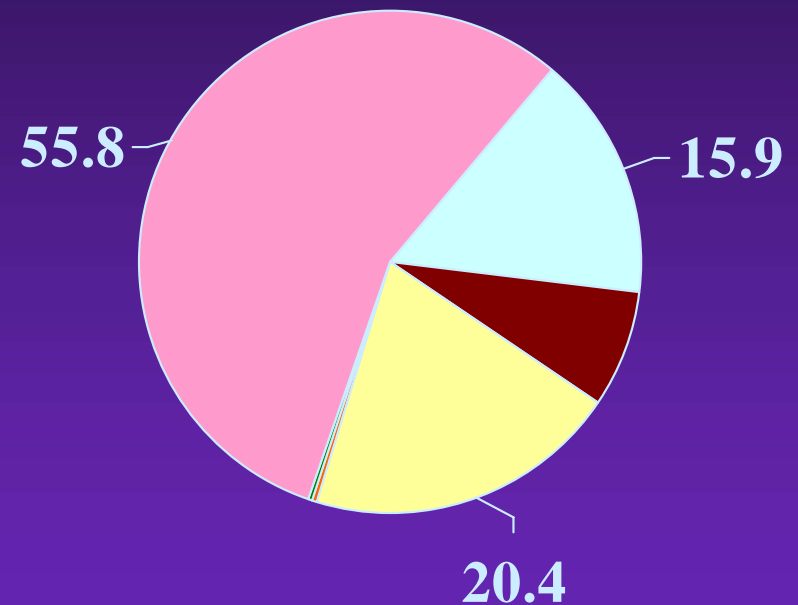
Source: William H. Frey, Brookings Institution

Natives and Recent Immigrants

Native Born

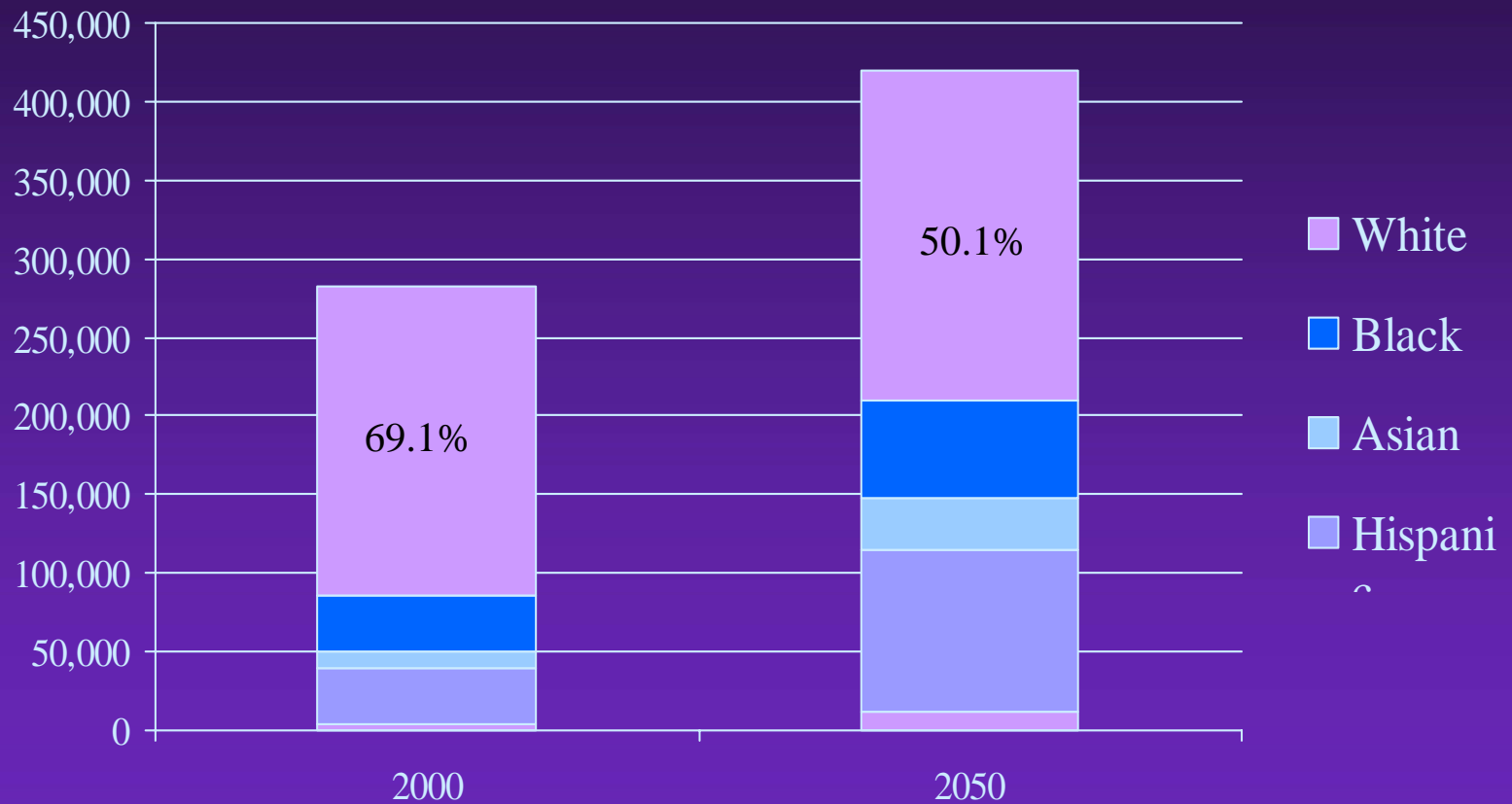


Recent Foreign Born



■ White ■ Black ■ Asian ■ Am Indian ■ Mixed Race ■ Hispanic

US: Population by Race: 2000 and 2050

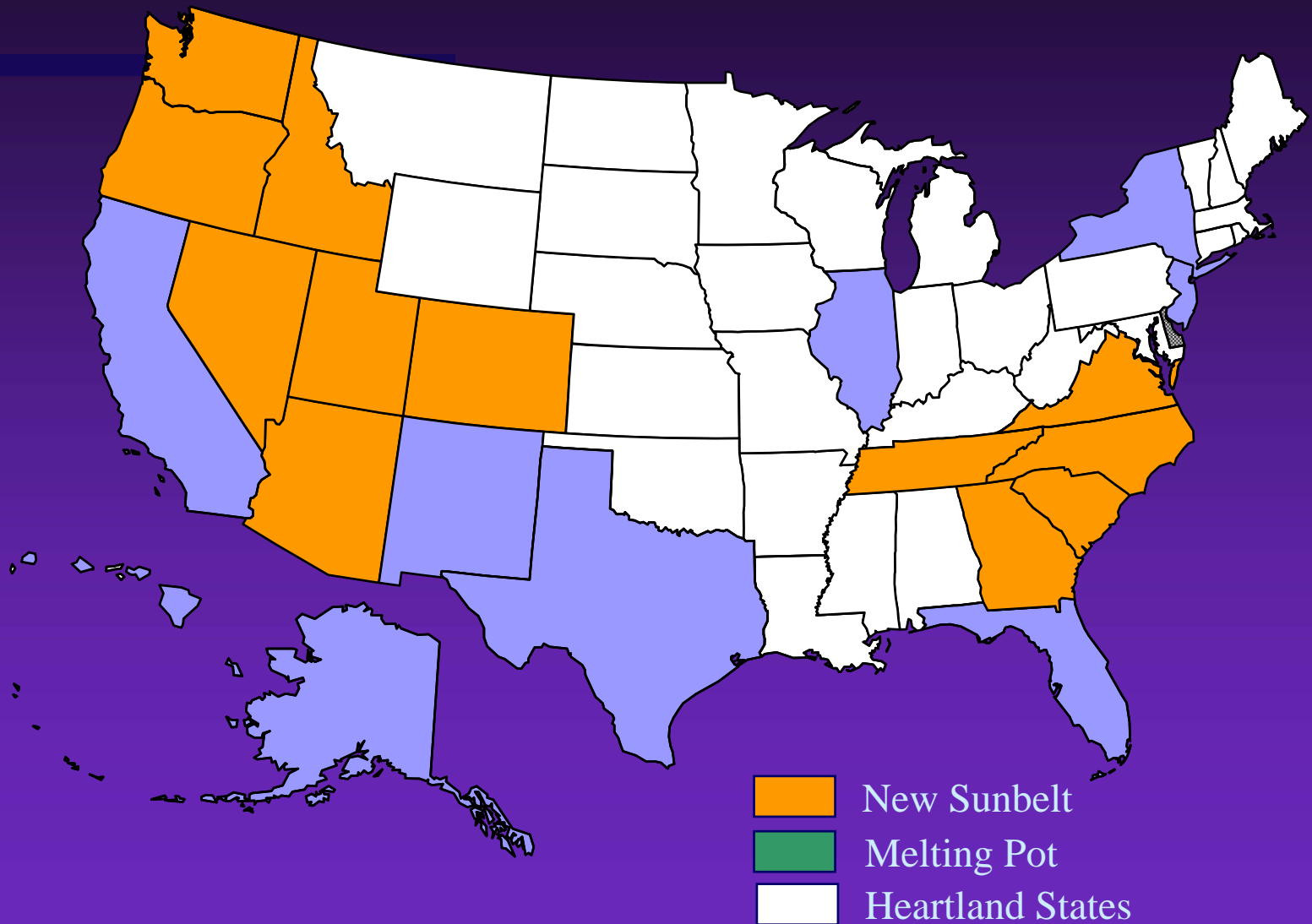


Source: William H. Frey, Brookings Institution

New Demographic Regions

- Melting Pot America
- The New Sunbelt
- The Heartland

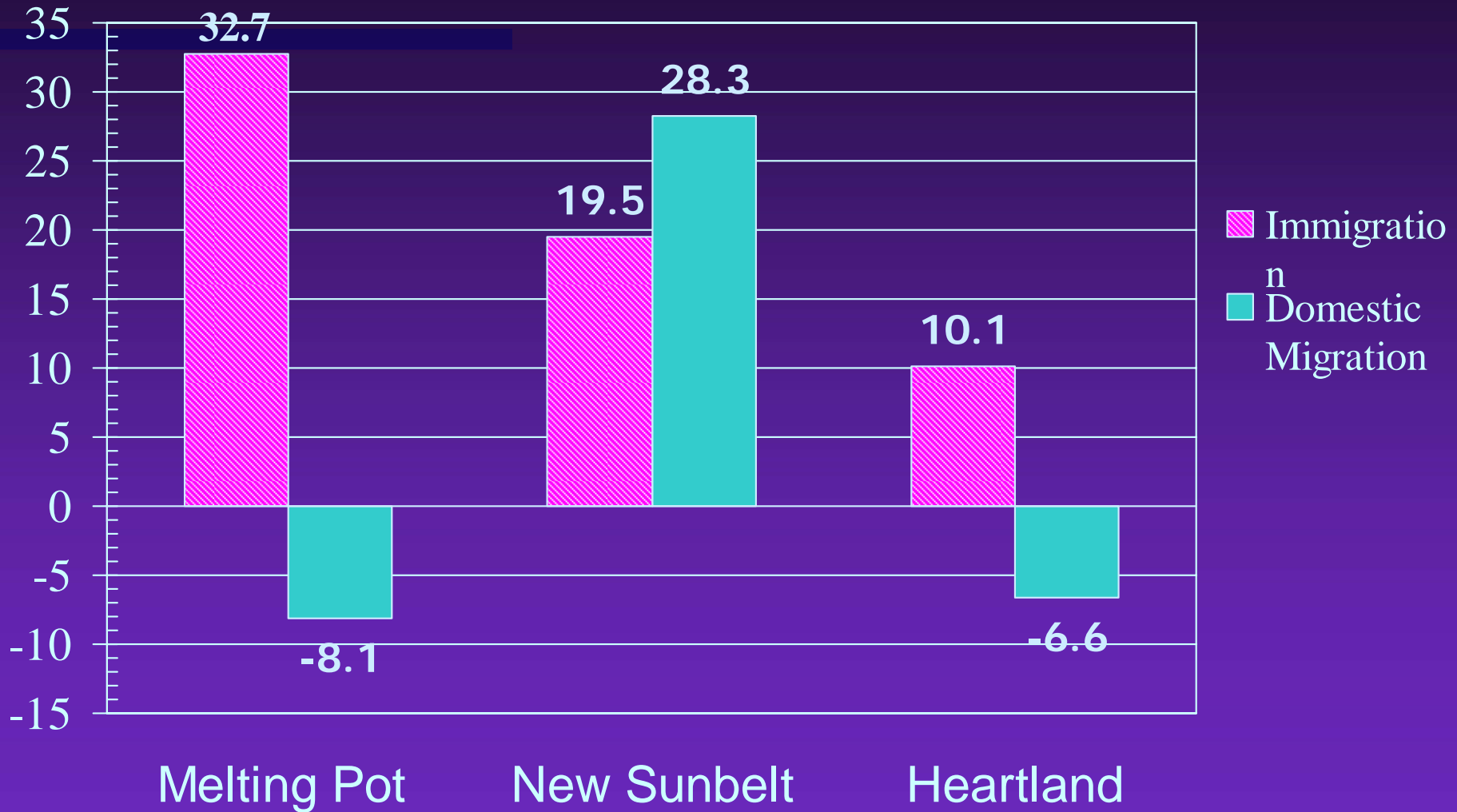
New Sunbelt, Melting Pot, and Heartland States



Source: William H. Frey

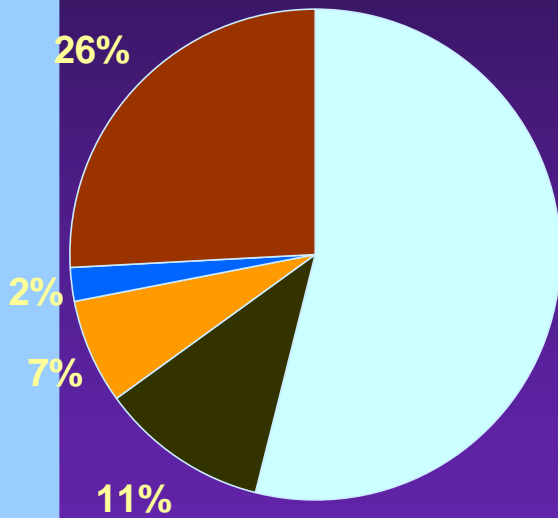
Demographic Components, 2000-2005

(Rates per 1000)

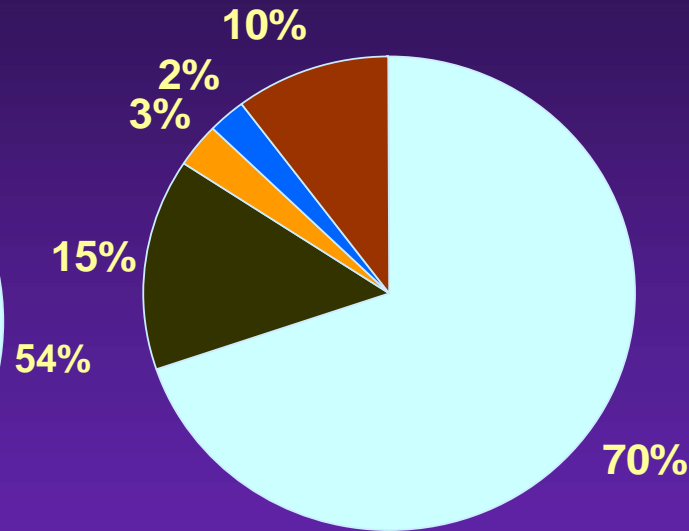


Race Composition of Regions

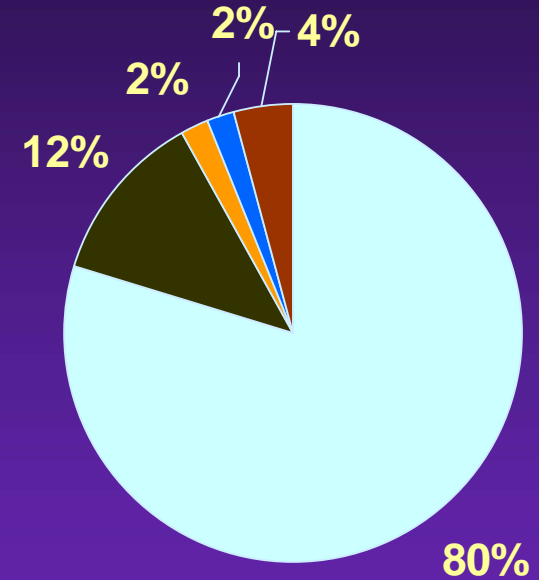
Melting Pot



New Sunbelt

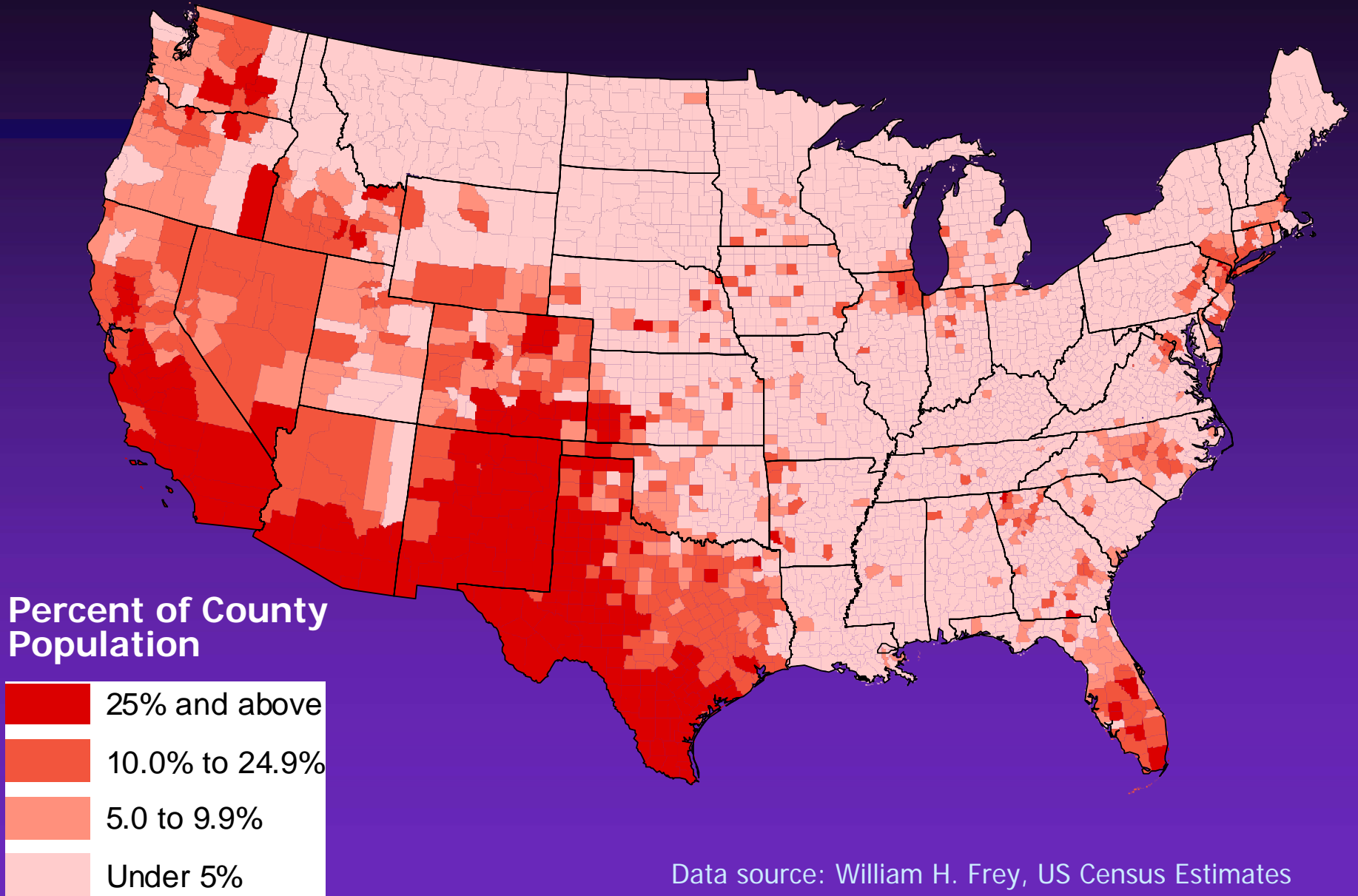


Heartland

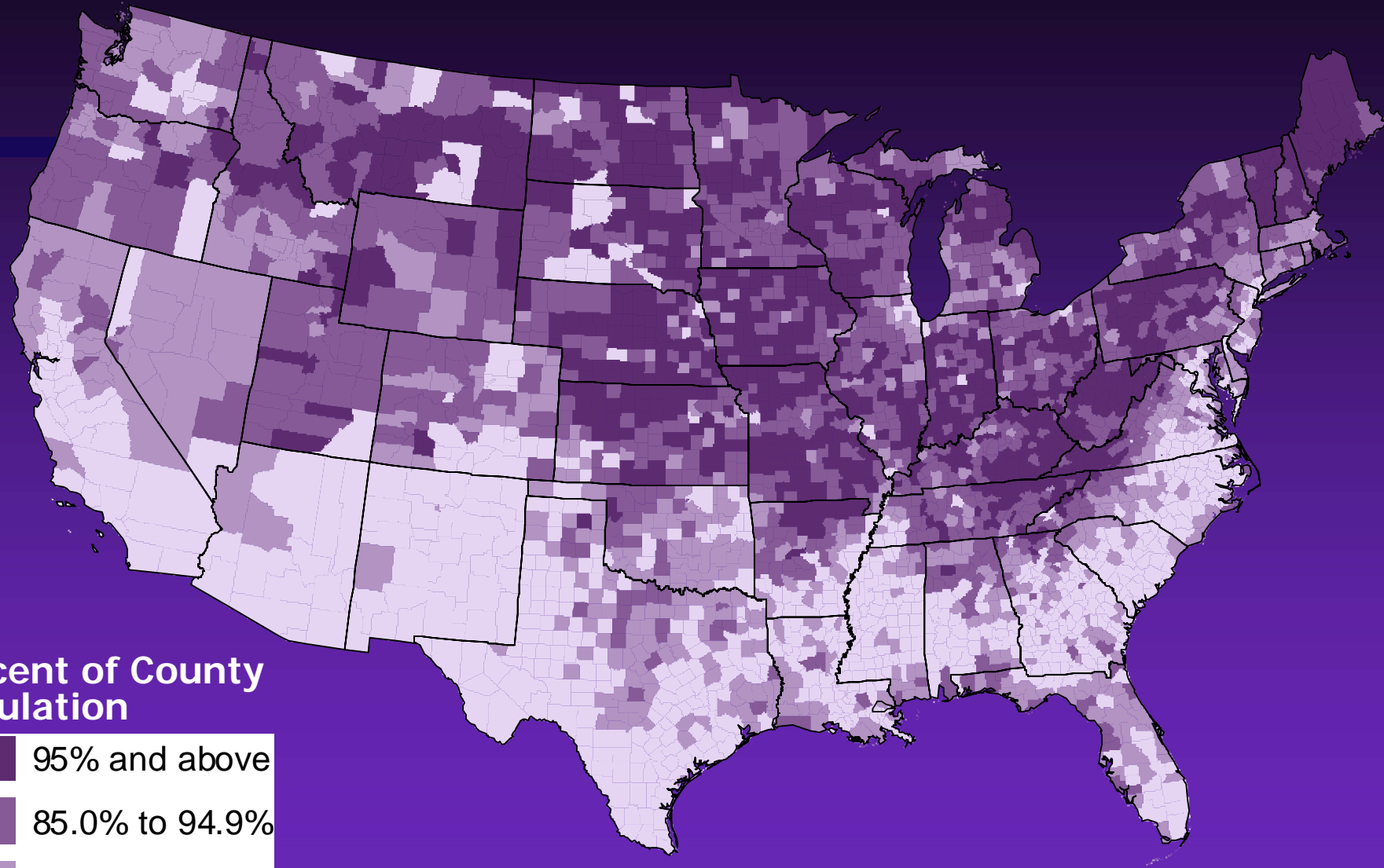


■ White ■ Black ■ Asian ■ Other ■ Hispanic

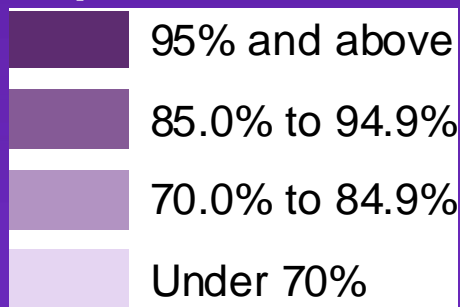
Hispanic Concentrations, 2005



White Concentrations, 2005

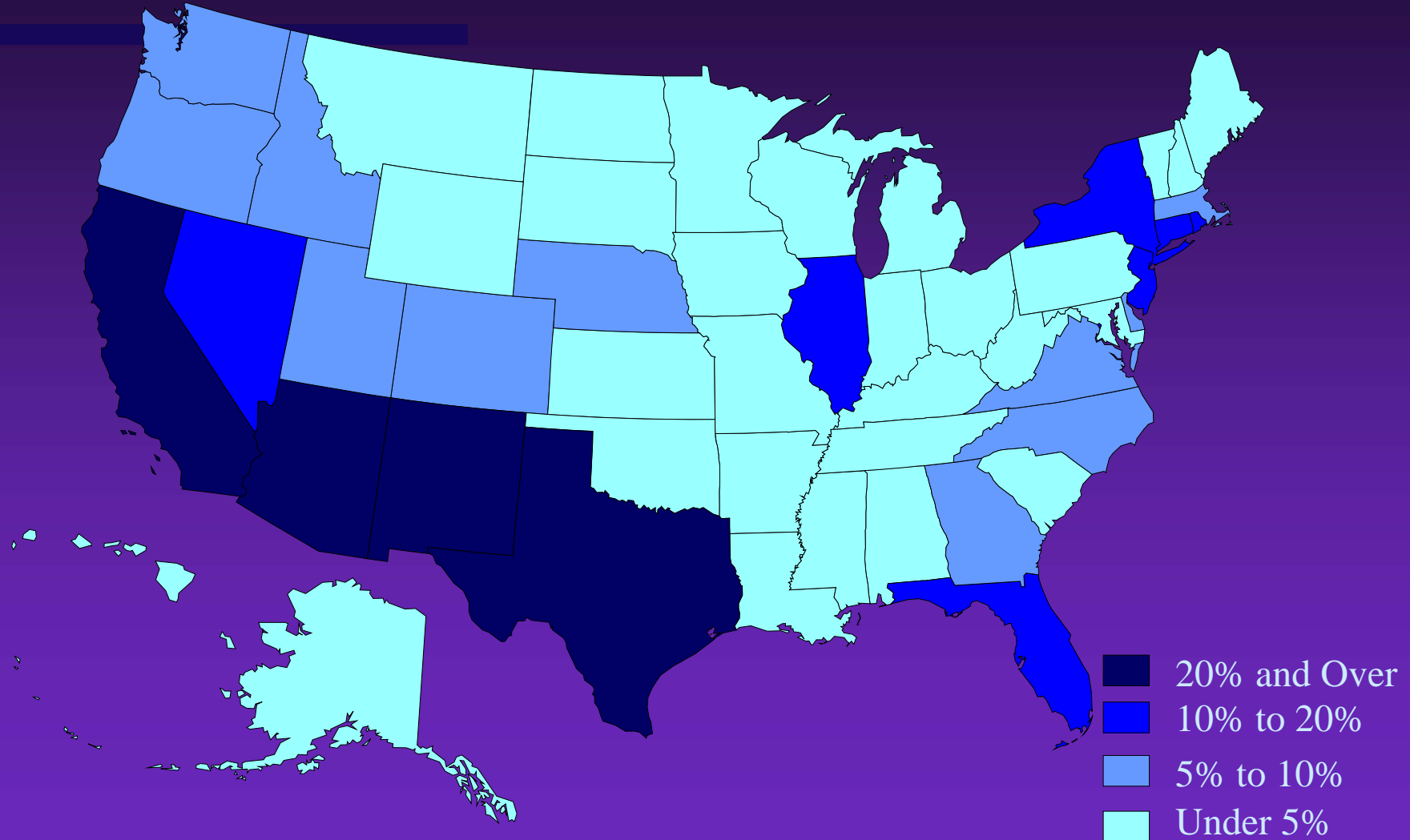


Percent of County Population



Data source: William H. Frey, US Census Estimates

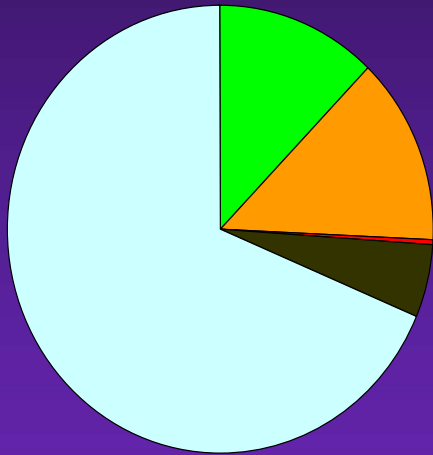
Children Speaking Spanish at Home



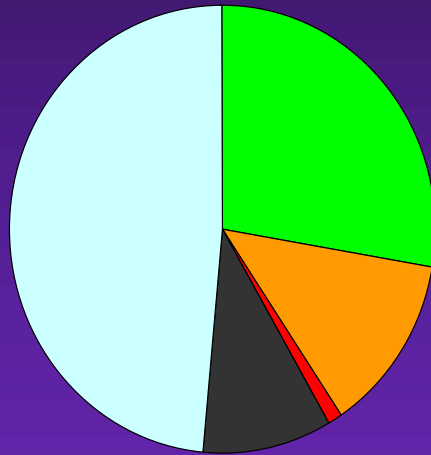
Source: William H. Frey, analysis of 2000 Census

Race Profiles for Occupations Los Angeles

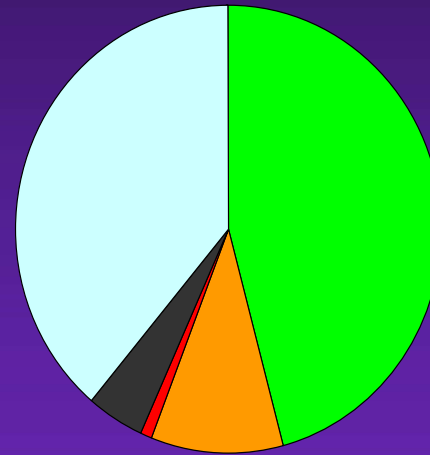
Professional & Mgrs



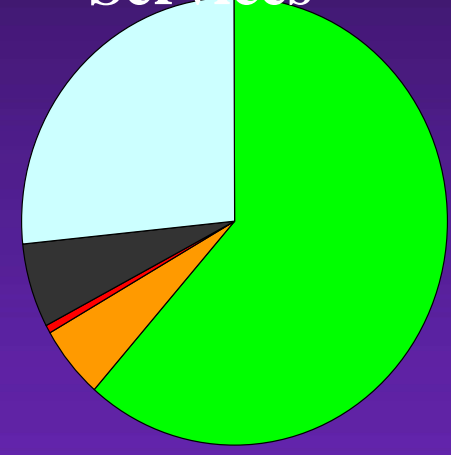
Clerical & Sales



Skilled Blue Collar

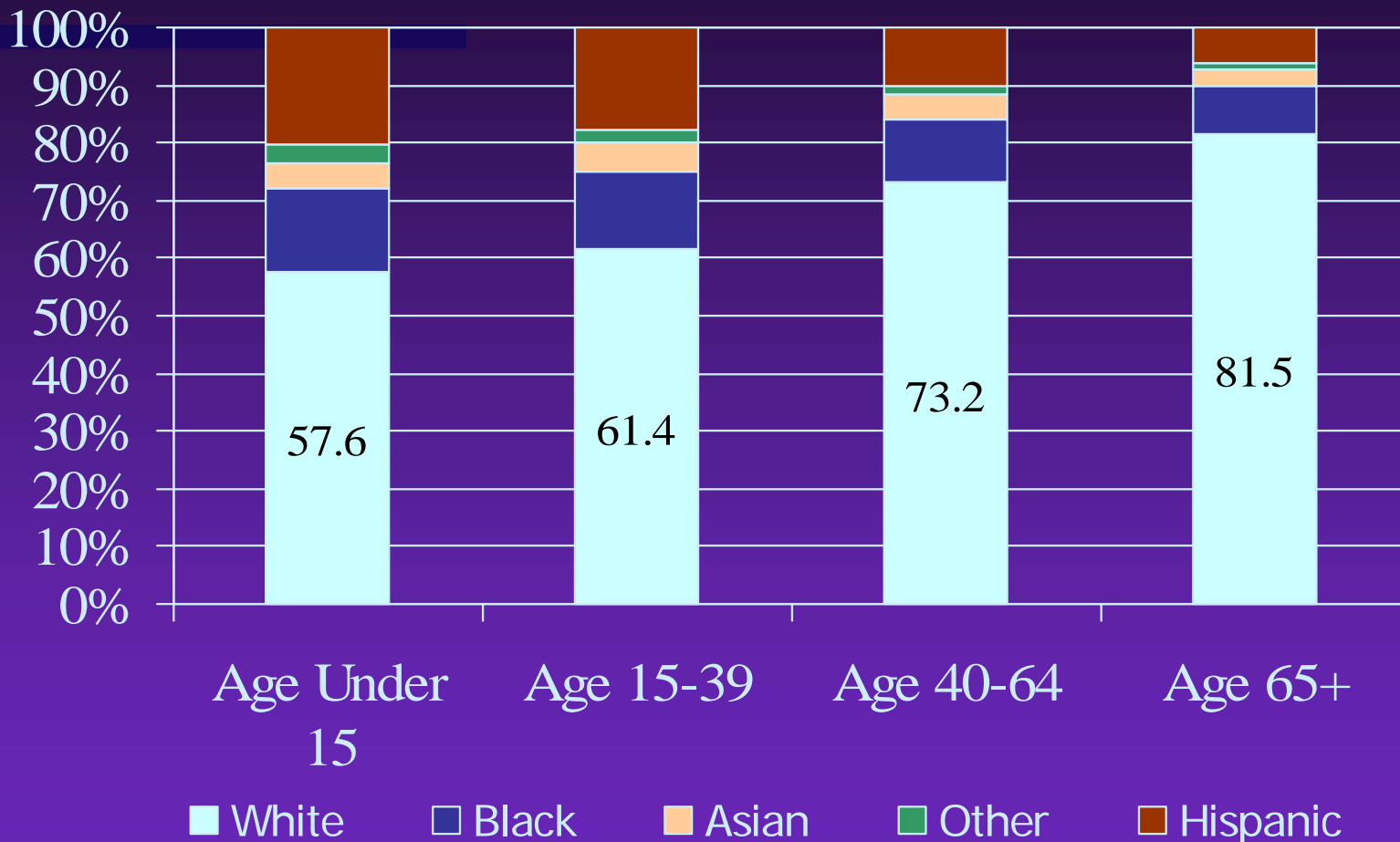


Unskilled & Services



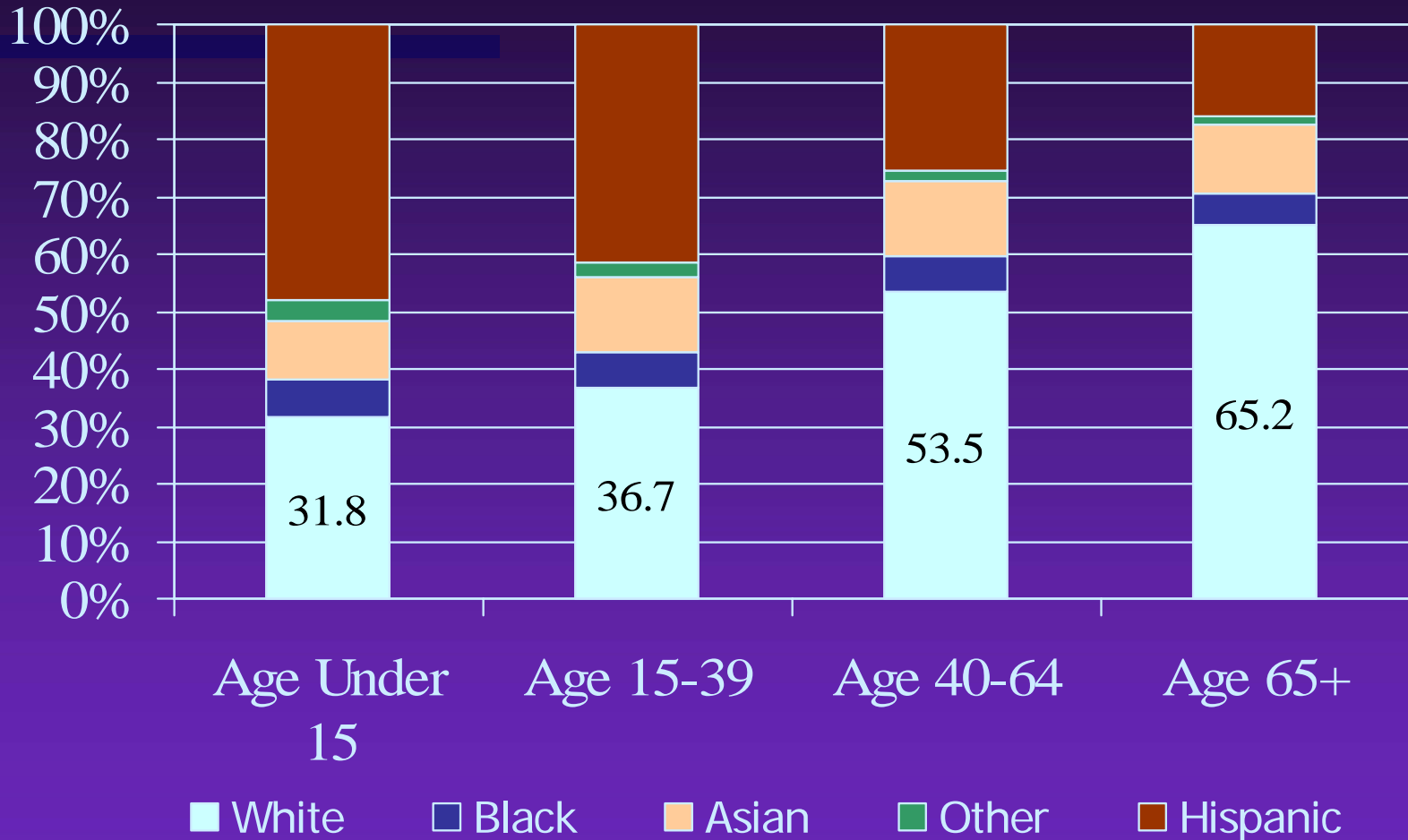
White Black Indian Asian Hispanic

Race for Age Groups: US



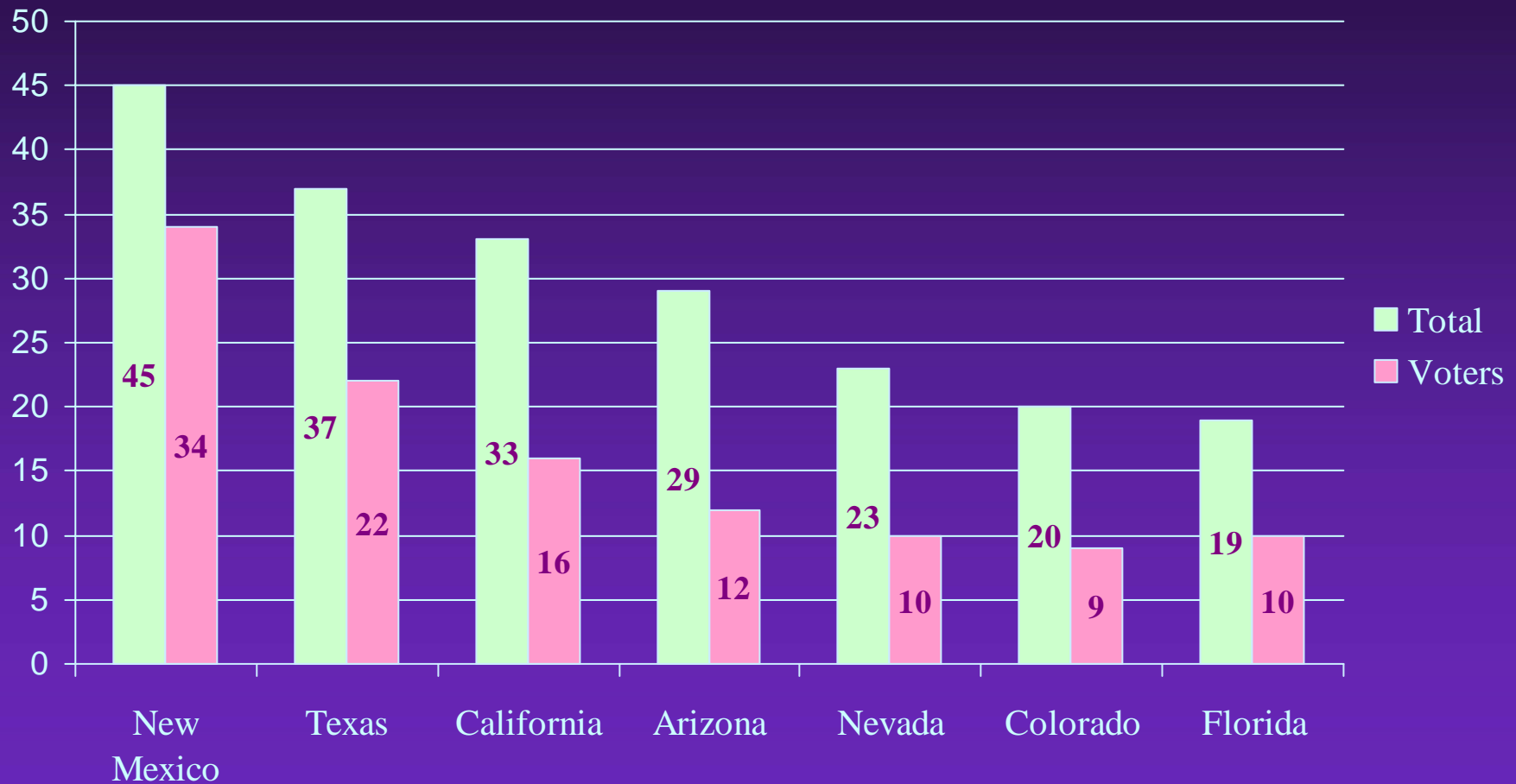
Source: William H. Frey analysis

Race for Age Groups: California



Source: William H. Frey analysis

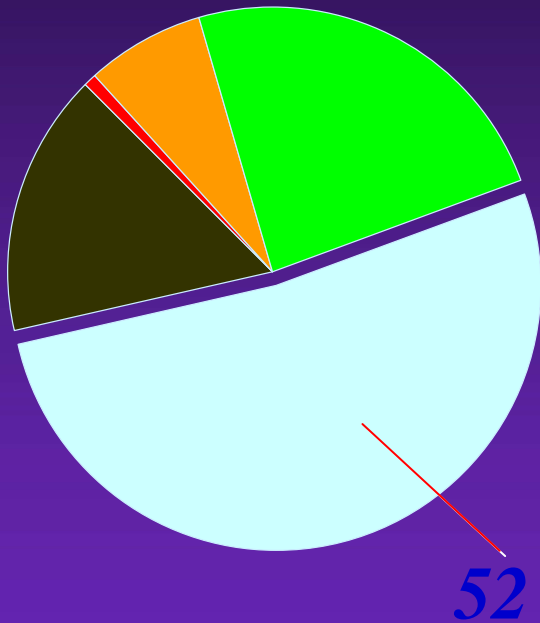
Hispanics: 2004 Total vs Voter Shares



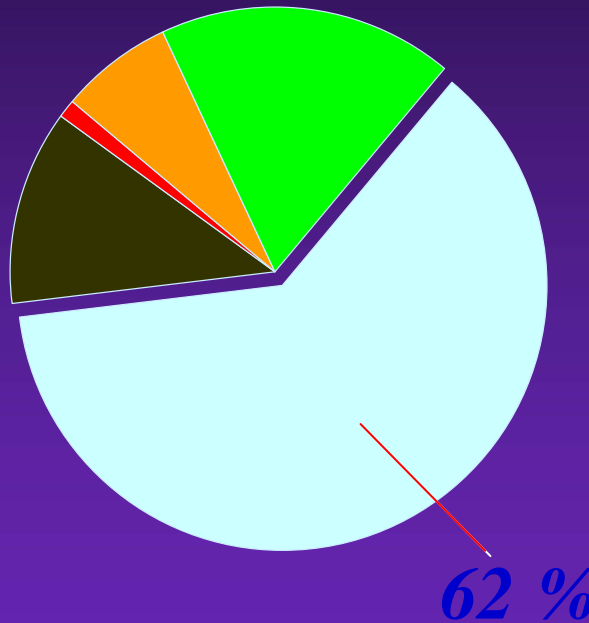
United States

Projected Race Compositions, 2025

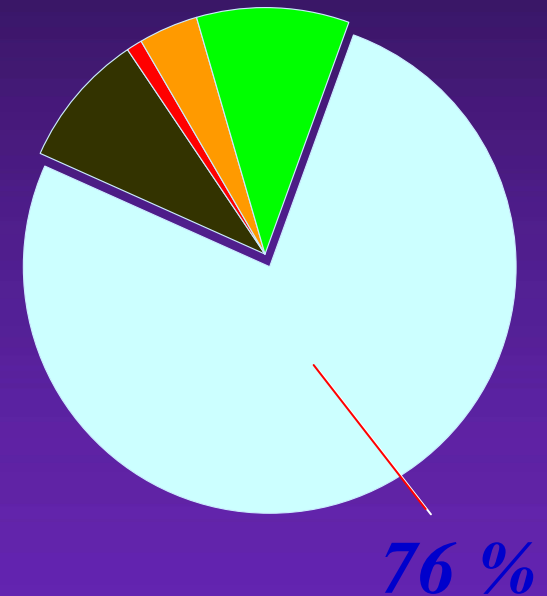
Under Age 18



Age 18 -64



Age 65+



white black Indian Asian Hispanic