

# Japanese attitudes toward immigration & foreign labors

Toshihiro Okubo

Keio Univ & RIETI

**RIETI-CEPR Symposium**

**“Migration and Labor Markets: The cases of Europe  
and Japan”**

May 11<sup>th</sup> 2026

# Data

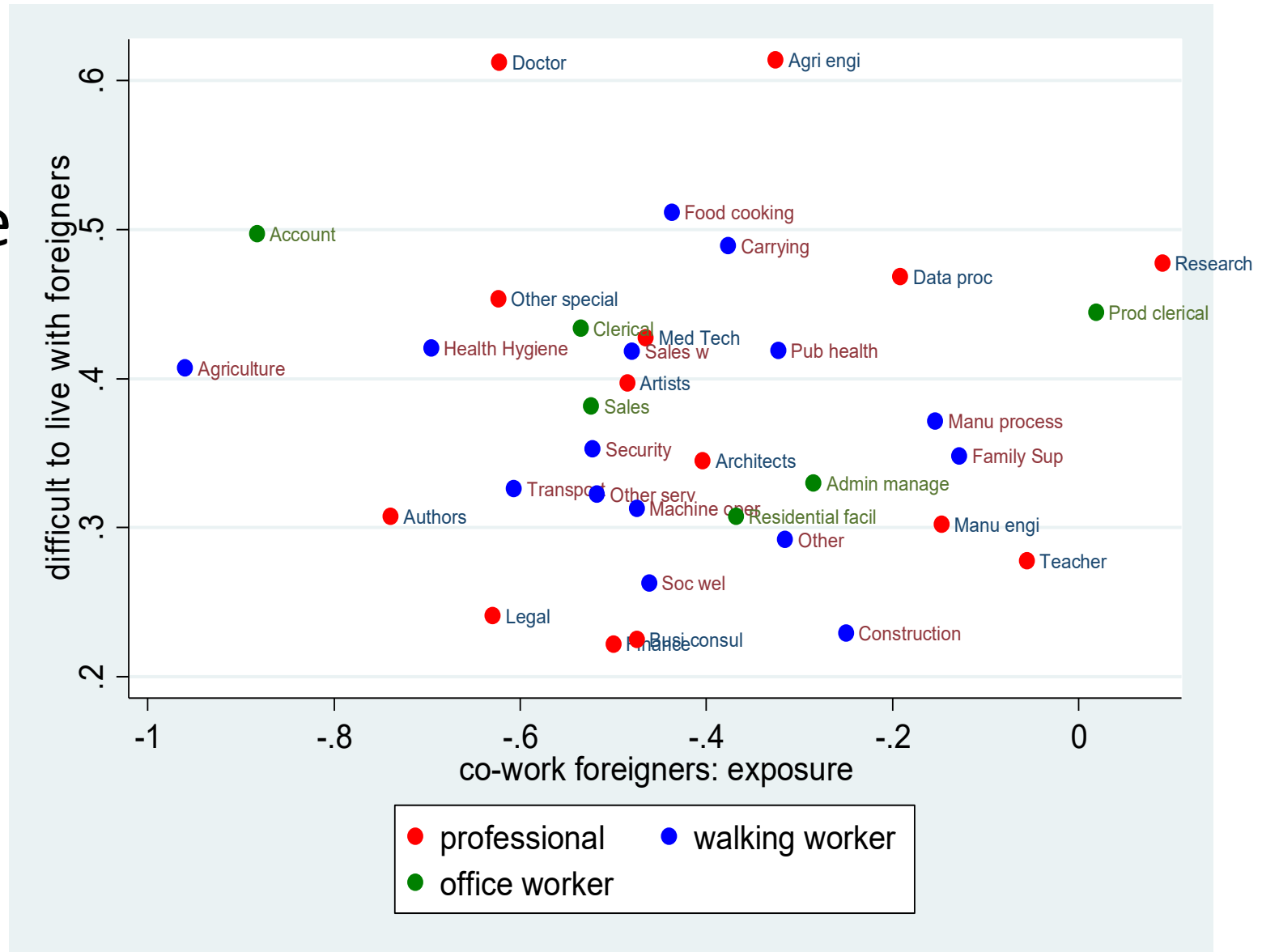
- Okubo=NIRA Survey (Wave 14)
  - N = 8,100 Japanese workers
  - Feb–Mar 2026

# Key questions

- (Exposure) Are you working with foreigners at workplace?
- (daily life) Difficult to live with foreigners?
- (workplace) Are they essential at workplace?
- (policy) Support immigration policy?
- (policy) Restrict foreign workers?

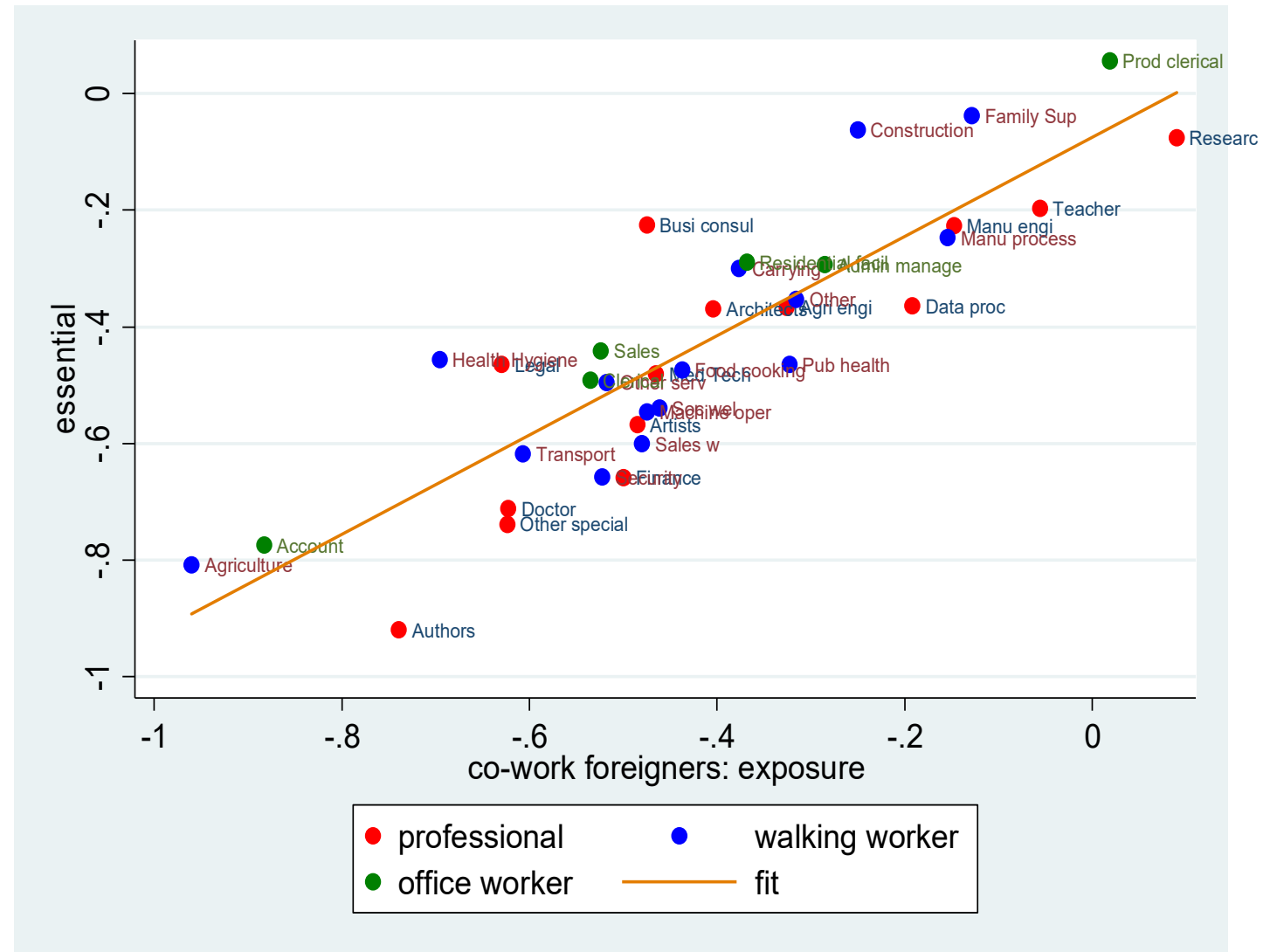
# No spillover across contents

- Workplace vs daily life
- No correlation



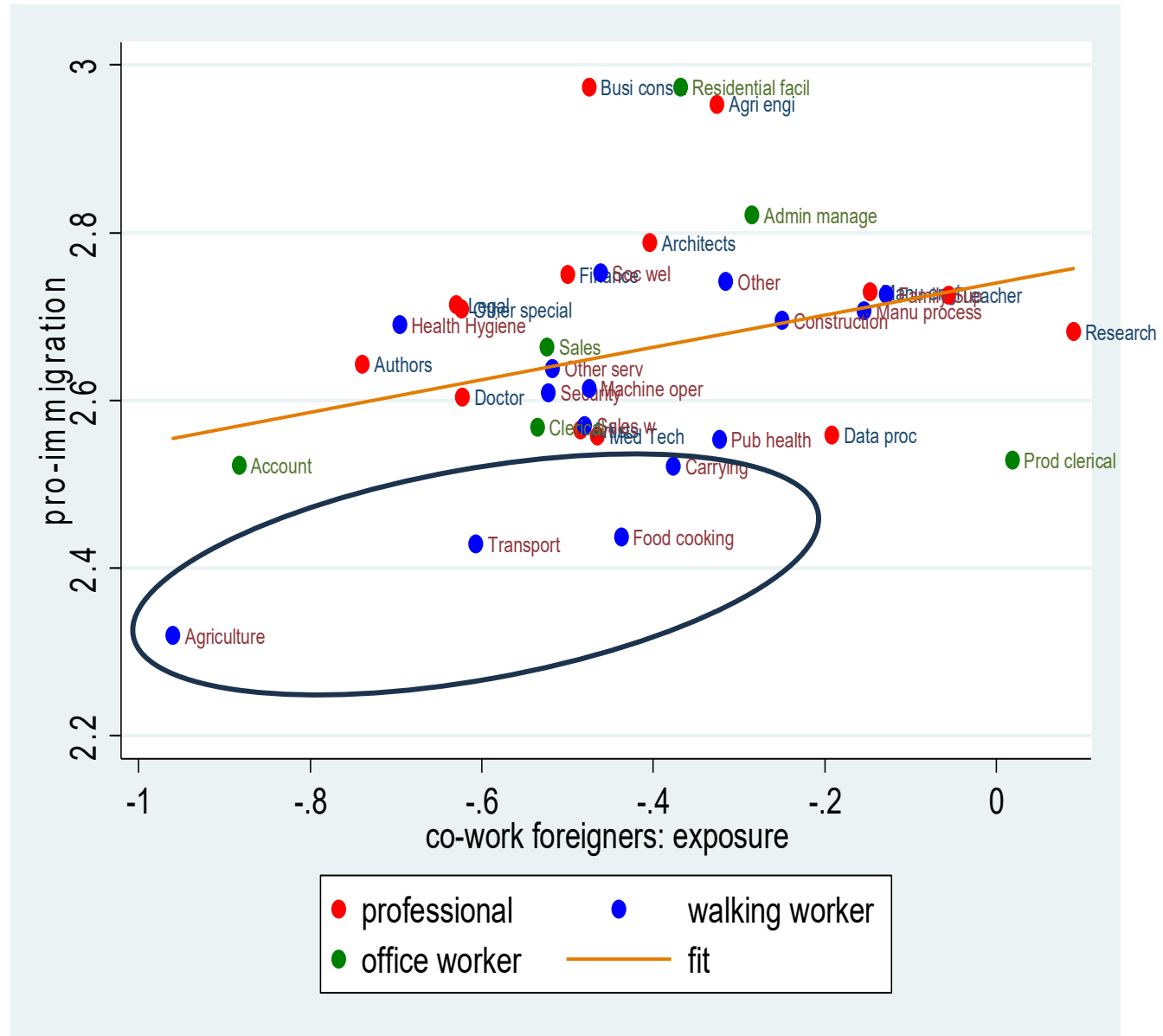
# Exposure $\Leftrightarrow$ Necessity

- More foreigners in occupation  $\Leftrightarrow$  “essential”
- e.g. Researchers, care, construction



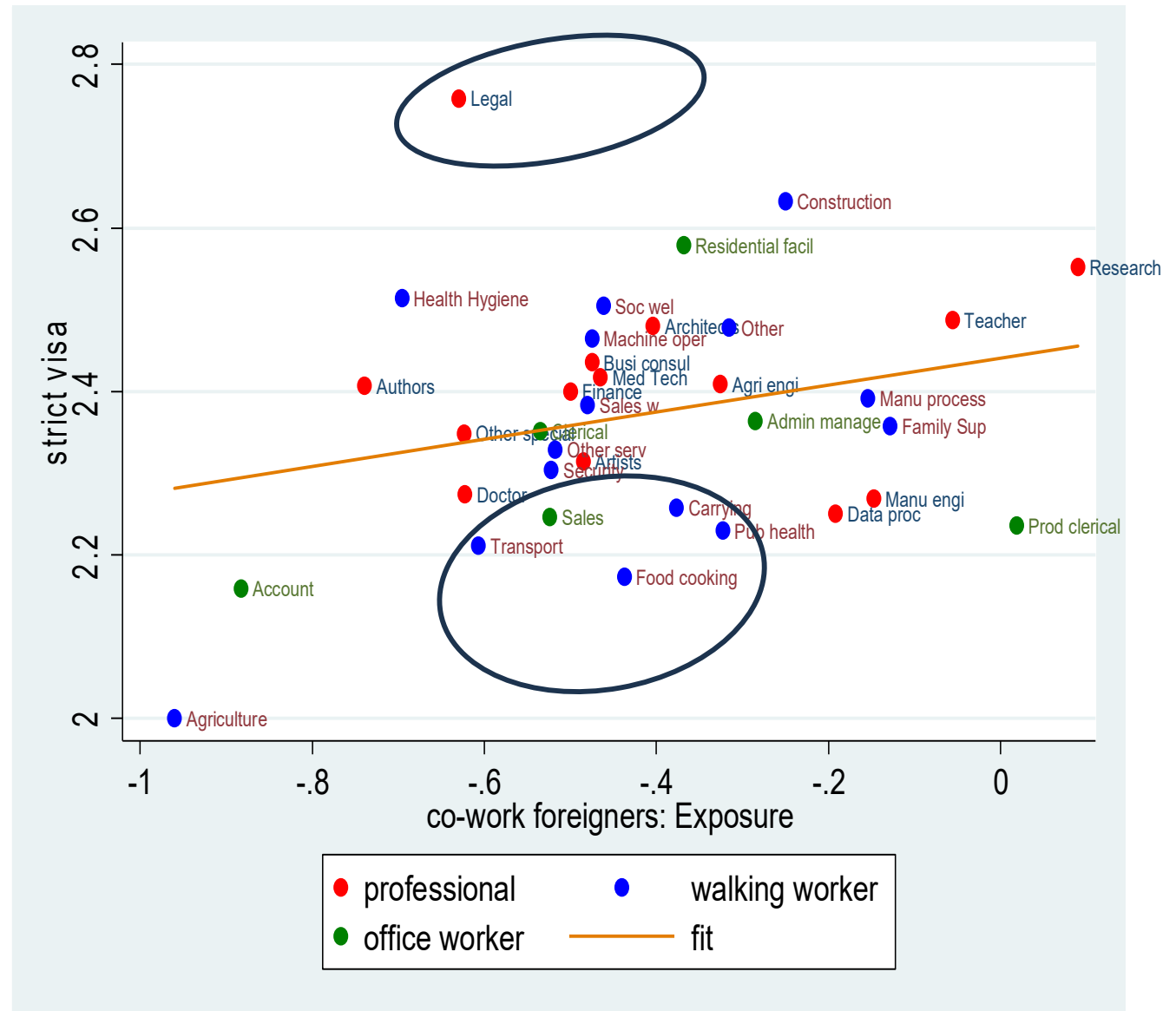
# Exposure $\Leftrightarrow$ pro-immigration

- More exposure  $\rightarrow$  pro-immigration
- But strong occupational divide
- Outlier: Unskilled  $\rightarrow$  negative
  - Agri, transport, food service



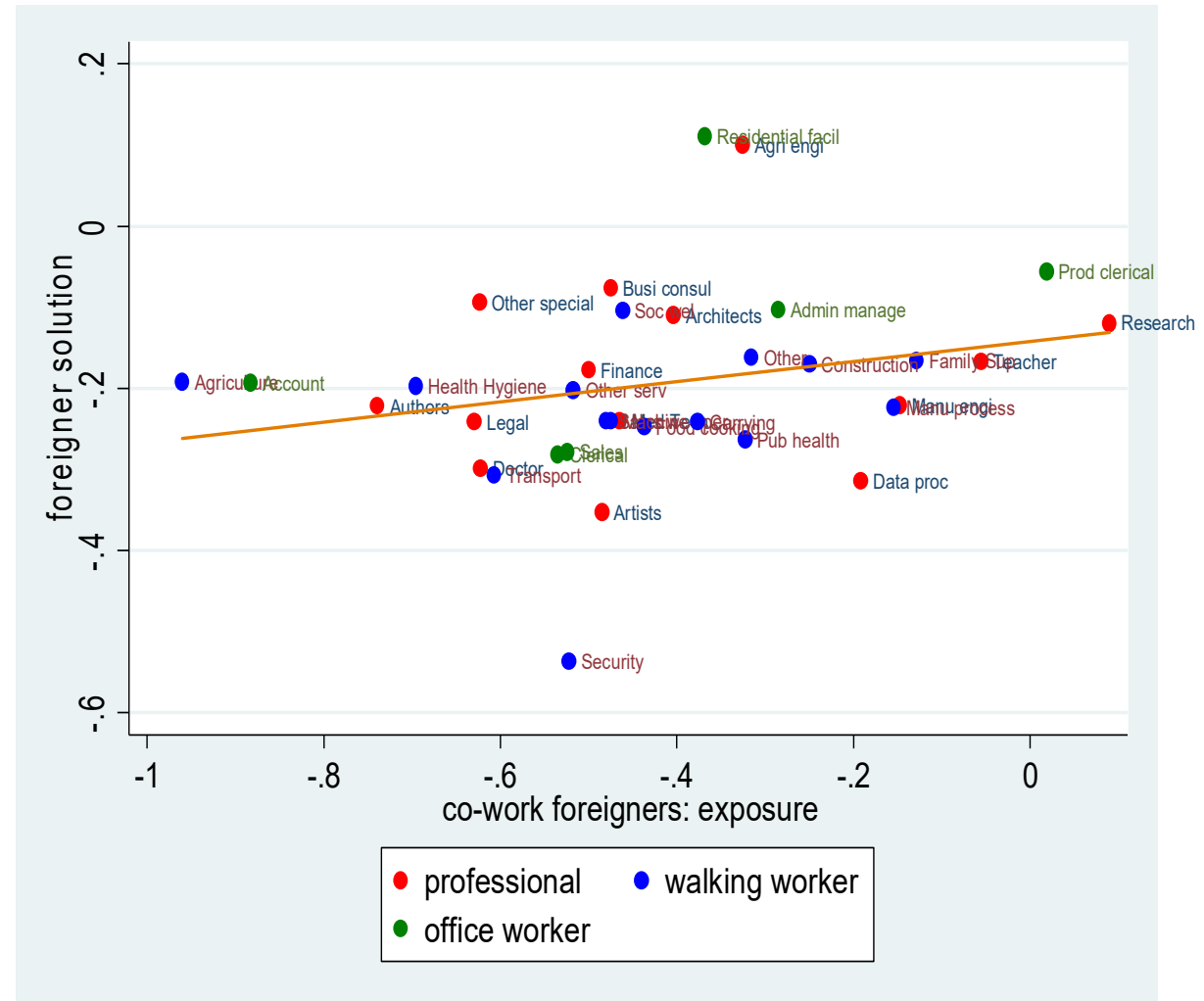
# Short-run restrictions (visa control)

- Low exposure → pro-restriction
- But strong occupational divide
- Legal/finance → oppose
- Food service /transport → support



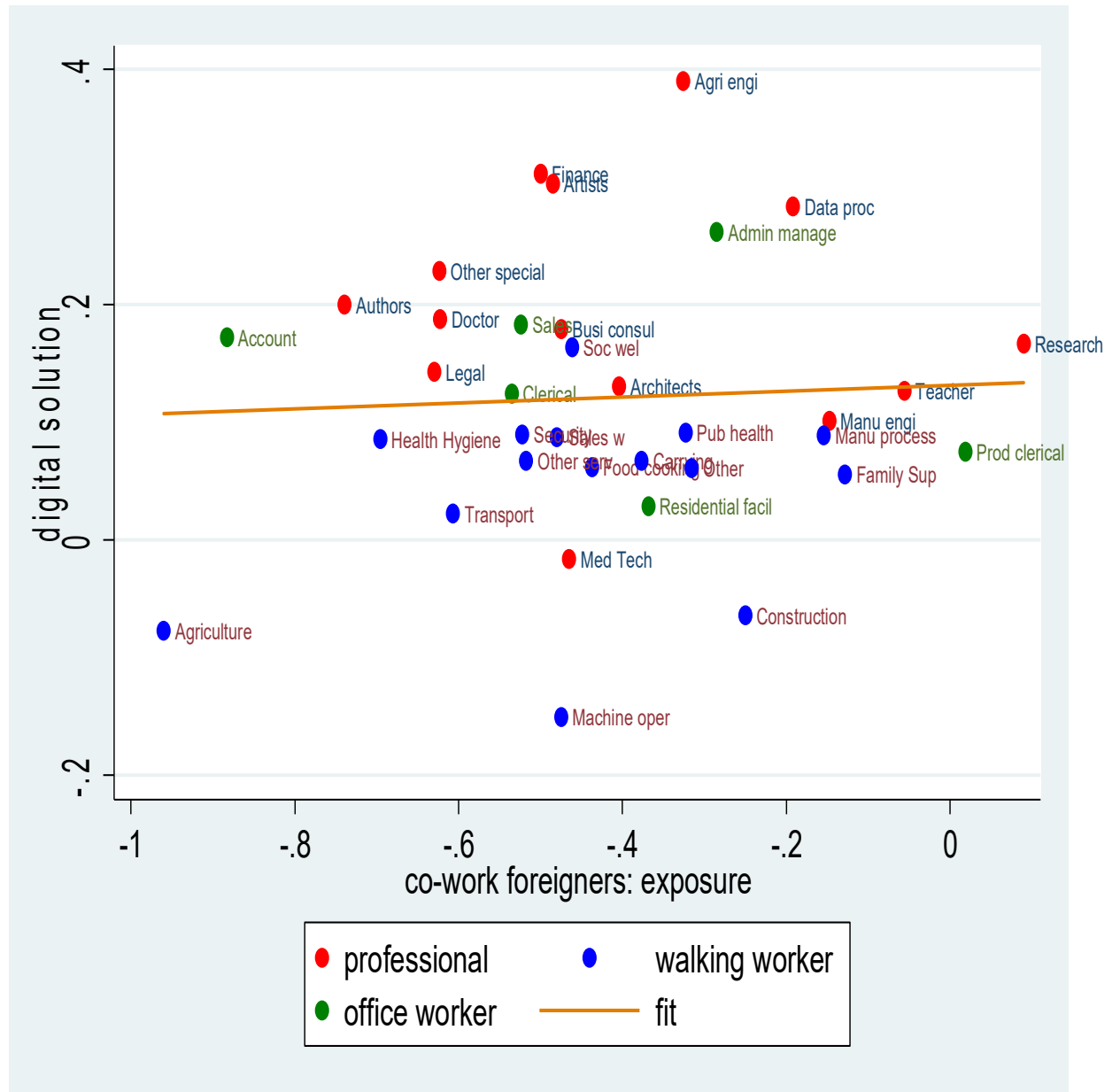
# Foreign workers help future JPN econ?

- Exposure slightly matters
- But strong occupational divide
- No one-size-fits-all



# Alternatives?

- Digitalization → no corr with exposure
- Professionals: optimistic
- Manual workers: skeptical



# Summary

- Exposure breeds acceptance — but unevenly
- Negative: Manu prod, agriculture, transportation, food/drinking-services
- Positive: Business management, legal, finance