

Institute Overview (As of 1 April, 2024)

The Research Institute of Economy, Trade and Industry (RIETI) is a policy think tank established in 2001. Its mission is to conduct theoretical and empirical research, maximize synergies with those engaged in policy making, and to make policy proposals based on evidence derived from such research activities. The institute is highly regarded both in Japan and abroad for its activity.

Established: April 1, 2001 (formerly Research Institute of International Trade and Industry (MITI/RI))

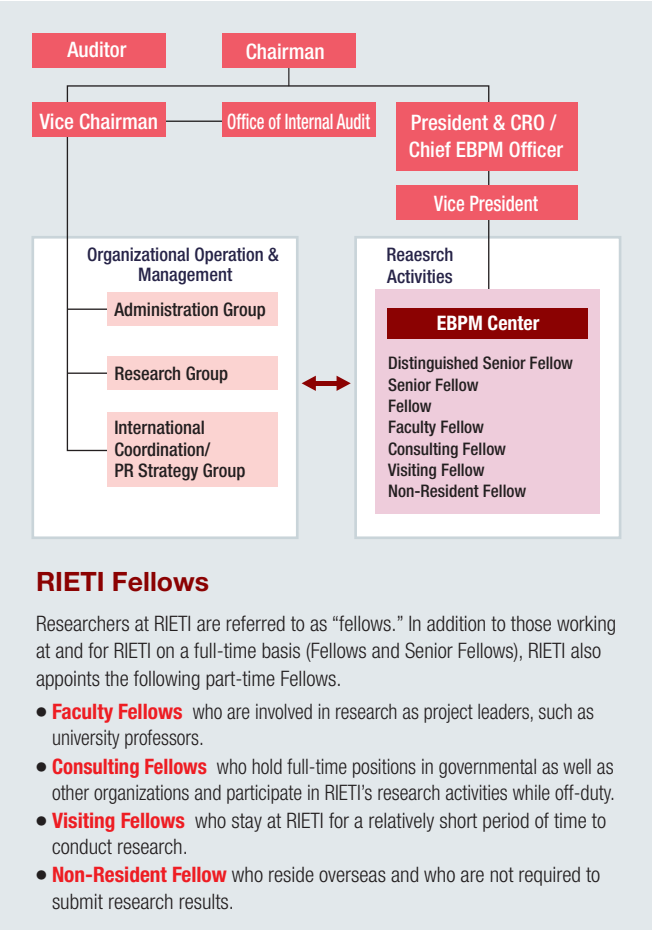
Chairman: FUKAO Kyoji

President and CRO: TOMIURA Eiichi

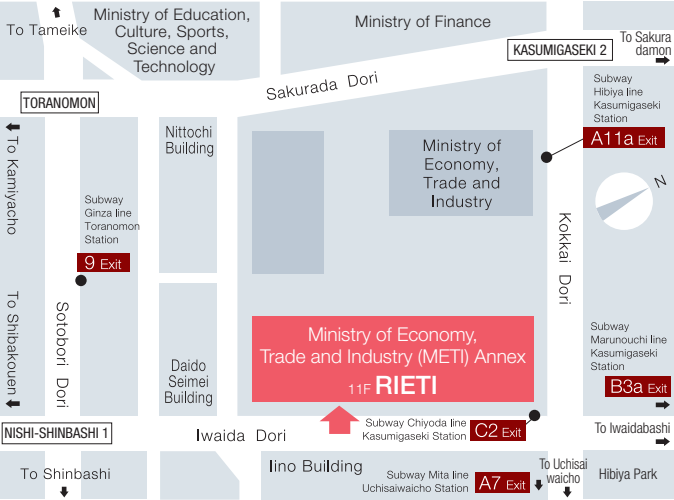
Number of fellows: 62

Primary resource of funds: Management grants
(from the Ministry of Economy, Trade and Industry)

Organization Chart



Location



- Tokyo Metro Chiyoda Line, Kasumigaseki Station, Exit C2. Two-minute walk.
- Tokyo Metro Hibiya Line, Kasumigaseki Station, Exit A11a. Three-minute walk.
- Tokyo Metro Marunouchi Line, Kasumigaseki Station, Exit B3a. Six-minute walk.
- Tokyo Metro Ginza Line, Toranomon Station, Exit 9. Four-minute walk.
- Tokyo Metro Mita Line, Uchisaiwaicho Station, Exit A7. Six-minute walk.



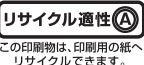
Research Institute of Economy, Trade and Industry, IAA

11th floor, Annex, Ministry of Economy, Trade and Industry (METI)
1-3-1, Kasumigaseki Chiyoda-ku, Tokyo, 100-8901 JAPAN
Phone: +81-3-3501-1363 Fax: +81-3-3501-8577

Website: <https://www.rieti.go.jp/en/>

[@en.RIETI](https://www.rieti.go.jp/en/) [@RIETIenglish](https://www.rieti.go.jp/en/)

Email: info@rieti.go.jp



Research Institute of Economy, Trade & Industry, IAA



FUKAO Kyoji, Chairman (left), TOMIURA Eiichi, President and CRO (right)

Greetings

In recent years, Japan has been facing unprecedented challenges, such as the rising geopolitical risks in the world, frequent natural disasters, and supply chain risks associated with them, as well as a structural shortage of labor due to the declining birthrate and aging population in Japan.

The Research Institute of Economy, Trade and Industry (RIETI) engages in theoretical and empirical research related to various economic and social issues. In the Sixth Mid-Term Plan (FY2024-FY2028), in addition to its role as a “knowledge platform” cultivated over the years, RIETI has reaffirmed its contribution to the formulation and implementation of public policy as its most important role. We intend to support the government's medium- and long-term policy development from the perspective of research and analysis, and to actively deliver policy proposals on our own initiative.

Furthermore, with regard to Evidence-Based Policy Making (EBPM), which is becoming increasingly important for planning effective policies, the RIETI EBPM Center is strengthening various policy advisory functions, as the center provides advice to policymakers in a collaborative manner. The RIETI EBPM Center will further promote efforts to make it easier for policymakers to make use of research findings.

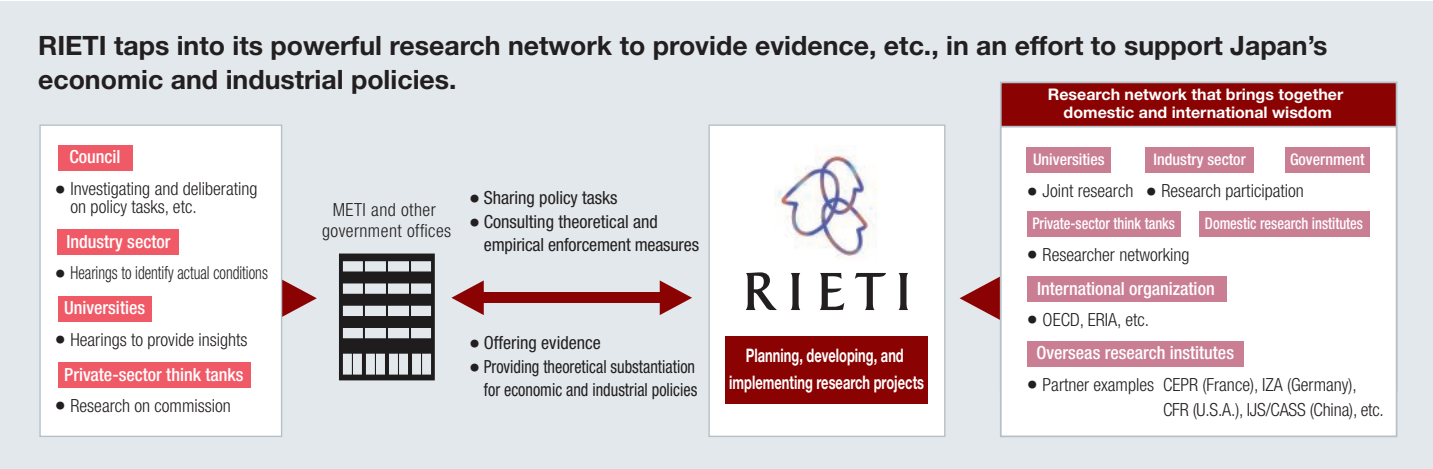
RIETI will continue to conduct evidence-based research that contributes to the formation of economic and industrial policy, which is its core mission, and to provide the results of such research in a timely manner in order to respond to various domestic and international issues that arise in the future. We look forward to your continued support and encouragement of RIETI.

FUKAO Kyoji, Chairman
TOMIURA Eiichi, President and CRO

Research Institute of Economy,
Trade and Industry, IAA

Purpose of RIETI

RIETI aims to efficiently and effectively conduct basic surveys and research on economic and industrial conditions and economic and industrial policies in Japan and overseas; contribute to the formulation of economic and industrial policies in Japan by utilizing the research and results of such research; promote knowledge and understanding of the economy and industry in the general public; and contribute to economic and industrial development through these activities.



Research Programs

RIETI conducts research activities (about 60 projects) based on nine research programs, including research that contributes to Evidence-Based Policy Making (EBPM).

KOBAYASHI Keiichiro	TODO Yasuyuki	HAMAGUCHI Nobuaki
Macroeconomy and Low Birthrate/ Aging Population	International Trade and Investment	Regional Economies
NAGAOKA Sadao	OHASHI Hiroshi	
Innovation	Industry Frontiers	Raising Industrial and Firm Productivity
TSURU Kotaro		KAWAGUCHI Daiji
Human Capital	Integrated Research	Policy Assessment

＝ Program Director

RIETI EBPM Center

RIETI has long been engaged in EBPM research, including verification of the effects of policies based on causal inference, and with the establishment of the RIETI EBPM Center in April 2022, RIETI began new initiatives, such as providing advice to policy makers on how to conduct preliminary evaluations of economic effects, mainly for large-scale projects implemented through public-private partnerships. Through these efforts, we aim to deepen EBPM and play a central role as a policy research institute that makes recommendations for the advancement of economic and industrial policy.

In addition, since 2023, we have organized the “Study Group for EBPM Promotion” consisting of experts from the private sector to discuss how EBPM should be utilized in public administration, taking into account overseas trends. In July 2024, the RIETI EBPM Practitioners Network Symposium was held based on the discussions in the study group, introducing and discussing advanced cases in the U.K. and the U.S. as well as examples of public-private collaboration in Japan. Since April 2024, our EBPM Portal Site, which aggregates prior research and basic information that can be used as a reference when developing and verifying policies, has been made available to METI staff.

Public Relations Activities

RIETI disseminates its research results and activities using a variety of tools. We hold public symposiums on economic and social issues and Brown Bag Lunch (BBL) seminars in which we invite domestic and foreign experts as lecturers. We also publish videos of the lectures on our YouTube channel “rietichannel” and publish summaries of the proceedings on our website. In addition, RIETI disseminates research papers and policy advocacy columns by its fellows via its website (in Japanese, English, and Chinese), and via Twitter and Facebook, and publishes a quarterly PR magazine, *RIETI Highlight* (once a year for the English version). In addition, RIETI occasionally publishes books summarizing its research findings.



Research/Policy Papers

Discussion Papers (DPs) and Policy Discussion Papers (PDPs) are research results summarized in the form of treatises after going through internal review processes. RIETI publish 160 and more papers annually. DPs are aimed at contributing to the policy making, while maintaining high academic standards. PDPs are aimed at stimulating policy debates on a timely basis. RIETI also prepares non-technical summaries that summarize briefly policy implications in DPs. These papers can be downloaded from RIETI's website.



International Cooperation

In collaboration with overseas universities and research institutions, we have been working on expanding our research network and strengthening our research cooperation system. We have signed Memorandum of Understanding (MOU) agreements with seven overseas research institutions. We are particularly working with the Centre for Economic Policy Research (CEPR), a world-leading economic think tank, to co-host symposiums each year. Moreover, we also mutually post MOU partner content on the websites with CEPR and IZA Institute of Labor Economics.

MOU Partners

Korea Institute for Industrial Economics and Trade (KIET, South Korea)
Taiwan Institute of Economic Research (TIER, Taiwan)
Council on Foreign Relations (CFR, United States)
Centre for Economic Policy Research (CEPR, France)
IZA Institute of Labor Economics (IZA, Germany)
Institute of Japanese Studies, Chinese Academy of Social Sciences (IJS /CASS)
The Mongolian National Development Agency (NDA, Mongolia)