

Institute Overview (as of April 1, 2023)

The Research Institute of Economy, Trade and Industry (RIETI) is a policy think tank established in 2001. Its mission is to conduct theoretical and empirical research, maximize synergies with those engaged in policy making, and to make policy proposals based on evidence derived from such research activities. The institute is highly regarded both in Japan and abroad for its activity.

Established: April 1, 2001 (formerly Research Institute of International Trade and Industry (MITI/RI))

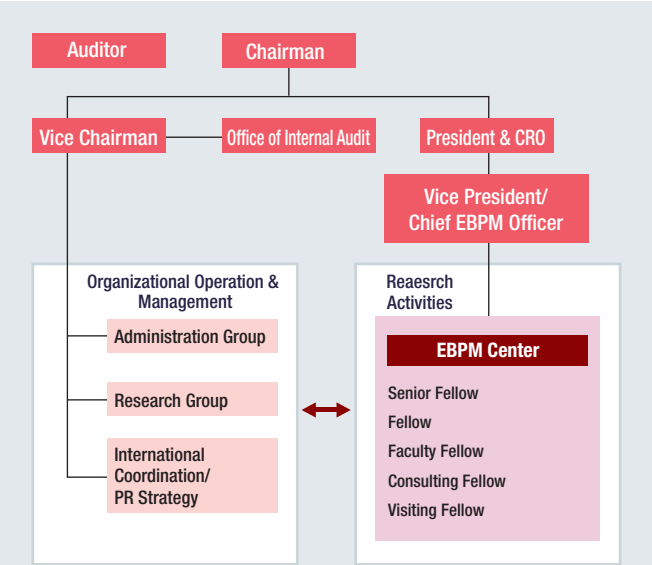
Chairman: URATA Shujiro

President and CRO: MORIKAWA Masayuki

Number of fellows: 64

Primary resource of funds: Management grants
(from the Ministry of Economy, Trade and Industry)

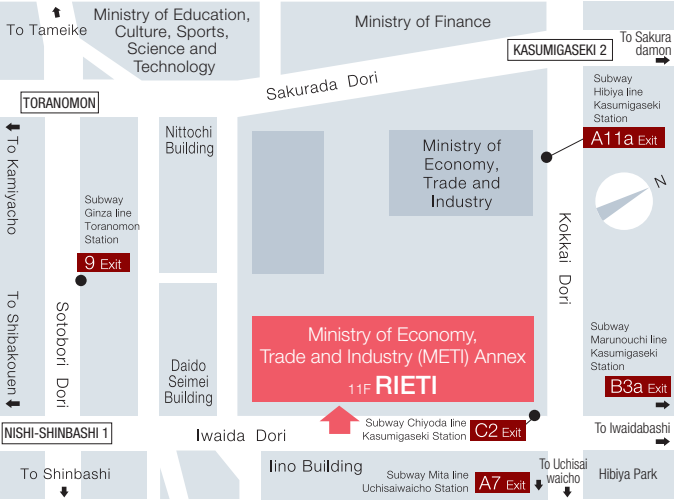
Organization Chart



RIETI Fellows

- Researchers at RIETI are referred to as “fellows.” In addition to those working at and for RIETI on a full-time basis (Fellows and Senior Fellows), RIETI also appoints the following part-time Fellows.
- **Faculty Fellows** who are involved in research as project leaders, such as university professors.
 - **Consulting Fellows** who hold full-time positions in governmental as well as other organizations and participate in RIETI’s research activities while off-duty.
 - **Visiting Fellows** who stay at RIETI for a relatively short period of time to conduct research.

Location



- Tokyo Metro Chiyoda Line, Kasumigaseki Station, Exit C2. Two-minute walk.
- Tokyo Metro Hibiya Line, Kasumigaseki Station, Exit A11a. Three-minute walk.
- Tokyo Metro Marunouchi Line, Kasumigaseki Station, Exit B3a. Six-minute walk.
- Tokyo Metro Ginza Line, Toranomon Station, Exit 9. Four-minute walk.
- Tokyo Metro Mita Line, Uchisaiwaicho Station, Exit A7. Six-minute walk.



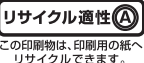
Research Institute of Economy, Trade and Industry, IAA

11th floor, Annex, Ministry of Economy, Trade and Industry (METI)
1-3-1, Kasumigaseki Chiyoda-ku, Tokyo, 100-8901 JAPAN
Phone: +81-3-3501-1363 Fax: +81-3-3501-8577

Website: <https://www.rieti.go.jp/en/>

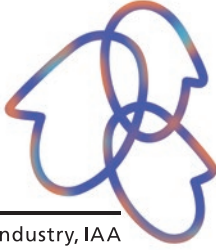
[Facebook](#) @en.RIETI [Twitter](#) @RIETIenglish

Email: info@rieti.go.jp



RIETI

Research Institute of Economy, Trade & Industry, IAA



URATA Shujiro, Chairman (left), MORIKAWA Masayuki, President and Chief Research Officer (right)

Greetings

Japan currently faces a variety of structural challenges, such as an escalation of population decline due to the low birthrate, a decrease in productivity and potential growth rate, energy and environmental issues, and many others. We are also facing a series of new shocks, such as the impact of the COVID-19 crisis, the destabilization of the international environment, including Russia’s invasion of Ukraine, and growing global concerns about inflation.

The Research Institute of Economy, Trade and Industry (RIETI) has been so far engaged in theoretical and empirical research related to various issues, and we will further develop our research to address new challenges. To this end, we will develop studies that utilize micro data based on government statistics and our own surveys, and engage in research using big data and research based on behavioral economic approaches. We also intend to advance academic research, including research that fuses research in the humanities and sciences that transcends the boundaries of the social sciences. We will actively participate in exchanges and joint research with researchers in Japan and overseas.

We have a long history of activity in Evidence-Based Policy Making (EBPM), which is becoming increasingly important for effective policy making, and with the establishment of the EBPM Center in 2022, we will further strengthen related research.

RIETI is committed to conducting evidence-based research that contributes to the formation of economic and industrial policy, which is its mission, and to provide the results of such research in a timely manner in order to respond to various domestic and international issues that may arise in the future. We look forward to your continued support and encouragement of RIETI.

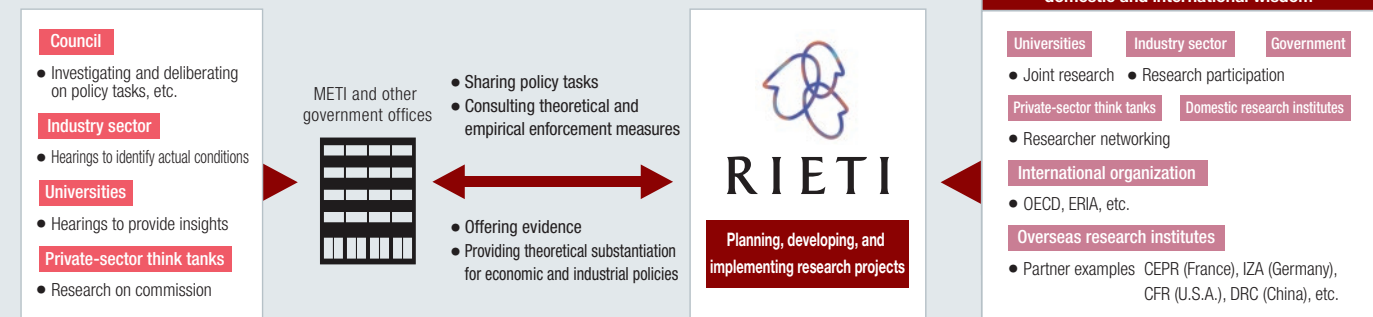
URATA Shujiro, Chairman
MORIKAWA Masayuki,
President and Chief Research Officer

Research Institute of Economy, Trade and Industry, IAA

Purpose of RIETI

RIETI aims to efficiently and effectively conduct basic surveys and research on economic and industrial conditions and economic and industrial policies in Japan and overseas; contribute to the formulation of economic and industrial policies in Japan by utilizing the research and results of such research; promote knowledge and understanding of the economy and industry in the general public; and contribute to economic and industrial development through these activities.

RIETI taps into its powerful research network to provide evidence, etc., in an effort to support Japan's economic and industrial policies.



Research Programs

RIETI conducts research activities (about 60 projects) based on nine research programs, including research that contributes to Evidence-Based Policy Making (EBPM).

KOBAYASHI Keiichiro	TOMIURA Eiichi	HAMAGUCHI Nobuaki
Macroeconomy and Low Birthrate/ Aging Population	International Trade and Investment	Regional Economies
NAGAOKA Sadao	OHASHI Hiroshi	FUKAO Kyoji
Innovation	Industry Frontiers	Raising Industrial and Firm Productivity
TSURU Kotaro	Integrated Research	KAWAGUCHI Daiji
Human Capital		Policy Assessment

＝ Program Director

RIETI EBPM Center

RIETI has long been engaged in EBPM research, including verification of the effects of policies based on causal inference, and with the establishment of the RIETI EBPM Center in April 2022, RIETI has begun new initiatives, such as providing advice to policy makers on how to conduct preliminary evaluations of economic effects, mainly for large-scale projects implemented through public-private partnerships. Through these efforts, we aim to deepen EBPM and play a central role as a policy research institute that makes recommendations for the advancement of economic and industrial policy.



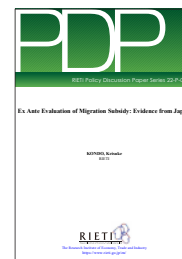
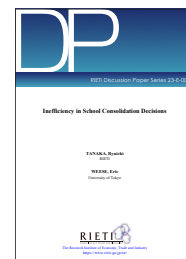
Public Relations Activities

RIETI disseminates its research results and activities using a variety of tools. We hold public symposiums on economic and social issues and Brown Bag Lunch (BBL) seminars in which we invite domestic and foreign experts as lecturers. We also publish videos of the lectures on our YouTube channel "rietichannel" and publish summaries of the proceedings on our website. In addition, RIETI disseminates research papers and policy advocacy columns by its fellows via its website (in Japanese, English, and Chinese), and via Twitter and Facebook, and publishes a quarterly PR magazine, *RIETI Highlight* (once a year for the English version). In addition, RIETI occasionally publishes books summarizing its research findings.



Research/Policy Papers

Discussion Papers (DPs) and Policy Discussion Papers (PDPs) are research results summarized in the form of treatises after going through internal review processes. RIETI publish 160 and more papers annually. DPs are aimed at contributing to the policy making, while maintaining high academic standards. PDPs are aimed at stimulating policy debates on a timely basis. RIETI also prepares non-technical summaries that summarize briefly policy implications in DPs. These papers can be downloaded from RIETI's website.



International Cooperation

We are expanding our research network and strengthening our research system by collaborating with researchers at universities and research institutes overseas. We have concluded Memoranda of Understanding (MOU) with seven overseas research institutions. In particular, we co-host an annual symposium with the Centre for Economic Policy Research (CEPR), one of the world's top economic think tanks. CEPR and the IZA Institute of Labor Economics also reprint our columns and other articles on their websites and we do the same for their publications.

MOU Partners

Korea Institute for Industrial Economics and Trade (KIET, Korea)
Taiwan Institute of Economic Research (TIER, Taiwan)
Council on Foreign Relations (CFR, U.S.A.)
Centre for Economic Policy Research (CEPR, Europe)
IZA Institute of Labor Economics (IZA, Germany)
Institute of Japanese Studies, Chinese Academy of Social Sciences (IJS, CASS, China)
The Mongolian National Development Agency (NDA, Mongolia)