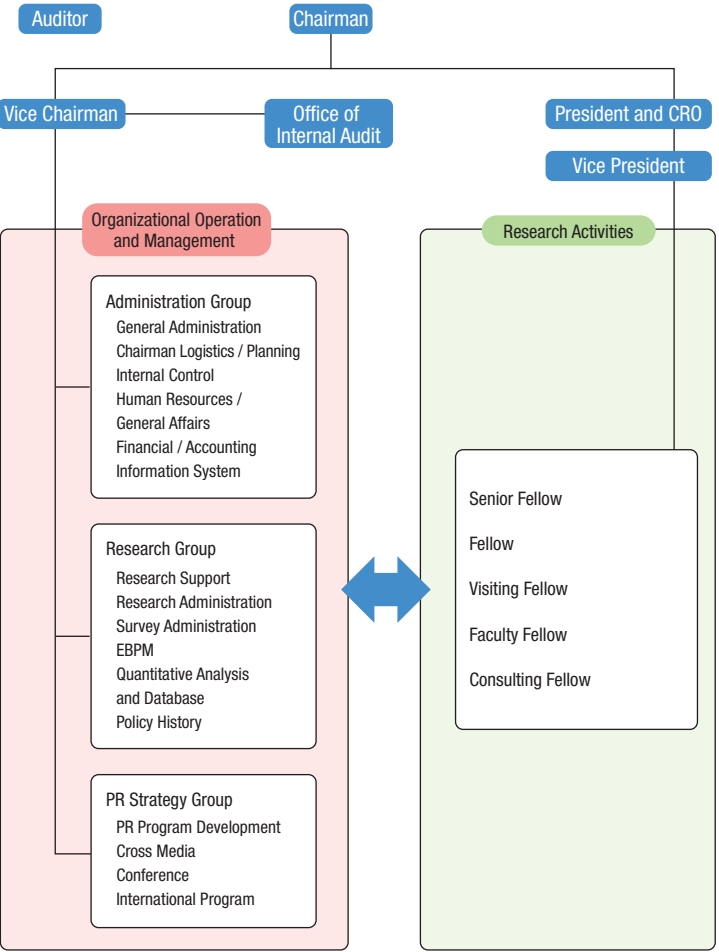


Overview of RIETI (As of the end of April 2019)

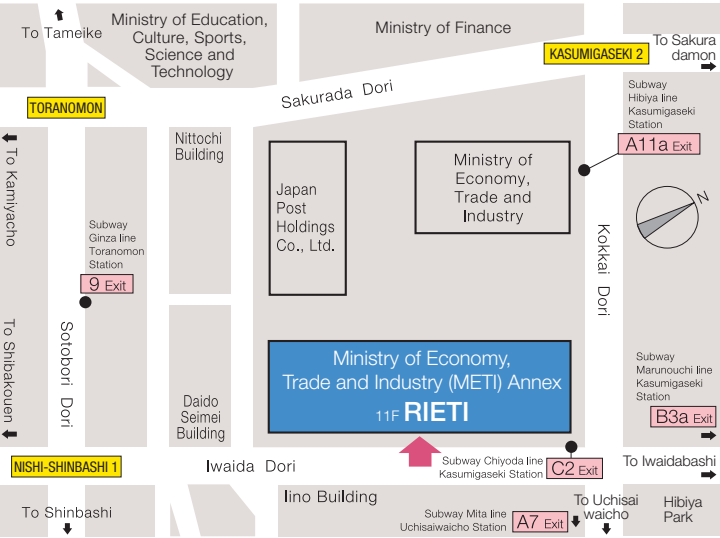
RIETI is a policy think tank established in 2001. Its mission is to conduct theoretical and empirical research, maximize synergies with those engaged in policymaking, and to make policy proposals based on evidence derived from such research activities. The institute is highly regarded both in Japan and abroad for its activity.

Established: April 1, 2001
Number of fellows: 71
Primary source of funds: Management grants from the Ministry of Economy, Trade and Industry

Research Institute of Economy, Trade and Industry, IAA



Location

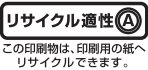


- Exits**
- Tokyo Metro Chiyoda Line, Kasumigaseki Station, Exit C2. Two-minute walk.
 - Tokyo Metro Hibiya Line, Kasumigaseki Station, Exit A11a. Three-minute walk.
 - Tokyo Metro Marunouchi Line, Kasumigaseki Station, Exit B3a. Six-minute walk.
 - Tokyo Metro Ginza Line, Toranomon Station, Exit 9. Four-minute walk.
 - Tokyo Metro Mita Line, Uchisaiwaicho Station, Exit A7. Six-minute walk.



Research Institute of Economy, Trade and Industry, IAA

11th floor, Annex, Ministry of Economy, Trade and Industry (METI)
1-3-1, Kasumigaseki Chiyoda-ku, Tokyo, 100-8901 JAPAN
Phone: +81-3-3501-1363 Fax: +81-3-3501-8577
Website: <https://www.rieti.go.jp/en/>
Facebook: @en.RIETI Twitter: @RIETIenglish
Email: info@rieti.go.jp



Research Institute of Economy, Trade and Industry, IAA

Purpose of RIETI

The Research Institute of Economy, Trade and Industry (RIETI) promotes policy formulation backed with theoretical and analytical research from a global perspective that is not confined within the traditional framework of thinking, with the ultimate goal of building a number of Research Programs that meet the needs of Japan's economic and industrial policies, within which the individual Research Projects interact in an organic manner. To effectively and efficiently disseminate the results of its research and promote policy recommendations, RIETI makes active use of its website, publications, and a variety of other tools.

Message

Japan is facing fundamental changes in its economy and society that can be characterized metaphorically as “earth-shaking movements.” These include the aggravation of labor shortages due to demographic changes caused by a low birthrate and an aging population, the fourth industrial revolution brought about by technological innovation, the deepening of global economic partnerships, and increasing competition for rule formation. Bearing these changes in mind, RIETI, throughout the fourth medium-term plan period (fiscal 2016 to fiscal 2019), will promote research activities and propose countermeasures to tackle diverse and complicated problems, based on its “Three Medium- to Long-term Perspectives on Economic and Industrial Policy”: (1) cultivating Japan's strength in the world economy, (2) making Japan into an innovative nation, and (3) overcoming population decline.

Therefore, from a neutral and objective perspective, RIETI will proceed with policy-oriented theoretical and empirical research. Moreover, in order to further enhance the recognition won as an “intellectual platform” in Japan and abroad, RIETI will deepen cooperation with research institutions and universities in the United States, Europe, Asia, and other countries. It will also contribute to economic and industrial policymaking.

RIETI will recognize economic issues in Japan and abroad, continue to fulfill its mission of carrying out evidence-based research that contributes to the formulation of economic and industrial policies, and provide research results on a timely basis. On behalf of RIETI, we sincerely ask for your continued support and encouragement.

NAKAJIMA Atsushi, Chairman
YANO Makoto, President and CRO

Research Programs

Three Medium- to Long-term Perspectives on Economic and Industrial Policies

1. Cultivating Japan's strength in the world economy

2. Making Japan into an innovative nation

3. Overcoming population decline

Lineup of Research Programs and Program Directors



Research Process

To further improve on the quality of research, RIETI ensures that discussions are organized for each research project through brainstorming workshops and Discussion Paper/Policy Discussion Paper seminars, where Japanese and foreign experts and policymakers participate to deepen the research.



Classification of Fellows

Senior Fellows and Fellows: Full-time resident fellows with previous affiliations to governmental organizations, research institutes, and universities both in Japan and abroad.

Faculty Fellows: Fellows who hold concurrent positions as university professors.



Consulting Fellows: Fellows who hold full-time positions in governmental as well as other organizations and participate in RIETI's research activities while off-duty.

Visiting Fellows: Professors at foreign universities who undertake studies on a relatively short-term basis, with RIETI serving as their research base.

Symposiums and Seminars

RIETI organizes various public events including symposiums and seminars that not only make research results from each project widely available to the public but also generate discussion of issues that are of great public interest and significant importance in international affairs with researchers, policymakers, and other stakeholders on a timely basis. Furthermore, RIETI holds BBL (Brown Bag Lunch) Seminars by inviting domestic and overseas experts as lecturers. The summaries, handouts, and other materials from these symposiums and seminars are available on our website.



RIETI-CEPR Symposium
Post-Brexit World Economy
March 22, 2019



RIETI EBPM Symposium
Establishing a solid foundation of
evidence-based policy making
December 14, 2018

Website

RIETI's website is available in Japanese, English, and Chinese, and introduces the depth of the activities of RIETI and its research fellows as well as posts of extensive content that is useful for policy formation. The website is mobile compatible and can be viewed clearly on a smartphone. RIETI also posts information on its official Facebook and Twitter pages.

RIETI's website provides discussion papers, which show the results of research, policy recommendation columns written by research fellows, various databases, and handouts and summaries of various events. In addition, RIETI strives to enhance pages on the website set by study groups and individual fellows, which disseminate in-depth information on each policy issue.

Furthermore, the website offers various services to provide timely information, including an e-mail newsletter service that sends the latest roundup of information posted on the website to users and an RSS feed service that delivers the latest information in each designated policy category to users by e-mail with a short text.

RIETI also endeavors to enhance its website for our international readers and provide original contents on issues that are expected to draw much attention from overseas. In addition, the website offers a monthly e-mail newsletter service that sends information to users. Through these websites, RIETI aims to provide information about Japan's economic and industrial policies to people overseas.



Research/Policy Papers

Discussion Papers (DPs) and Policy Discussion Papers (PDPs) are research results summarized in the form of treatises after going through internal review processes. DPs are aimed at contributing to policymaking, while maintaining high academic standards. PDPs are aimed at stimulating policy debates on a timely basis. RIETI also prepares non-technical summaries that summarize briefly policy implications in DPs. These papers can be downloaded from RIETI's website.



PR Magazine

RIETI Highlight is a quarterly public relations magazine that keeps readers up to date on the activities of RIETI, including brief reports on symposiums and seminars, reviews of new publications, and columns written by our fellows. An article titled "Research Digest," which introduces recently published discussion papers through interviews with their authors, explores the motivation underlying their research in an easy-to-understand manner that has been well-received by readers. We also look at timely topics chosen from among our research results and present them as the feature in each edition of the magazine.



Quarterly Issue (in JP) Special Issue (in ENG)

Publications

RIETI's publications cover a diverse array of themes and appear under the imprint of various publishers. The contents range from studies of a high academic standard that have undergone peer review in their respective disciplines to timely policy study topics for a wider audience.



From right:

- *Managing Currency Risk: How Japanese Firms Choose Invoicing Currency*
Written by ITO Takatoshi, KOIBUCHI Satoshi, SATO Kiyotaka, SHIMIZU Junko
Edward Elgar Publishing
July 2018
- *The Economics of Artificial Intelligence: How Our Lives, Our Work and Our Society Will Change*
Written and Edited by MANAGI Shunsuke
MINERVA SHOBO CO., LTD.
October 2018
- *Productivity: Misperceptions and realities*
Written by MORIKAWA Masayuki
Nikkei Publishing Inc.
November 2018