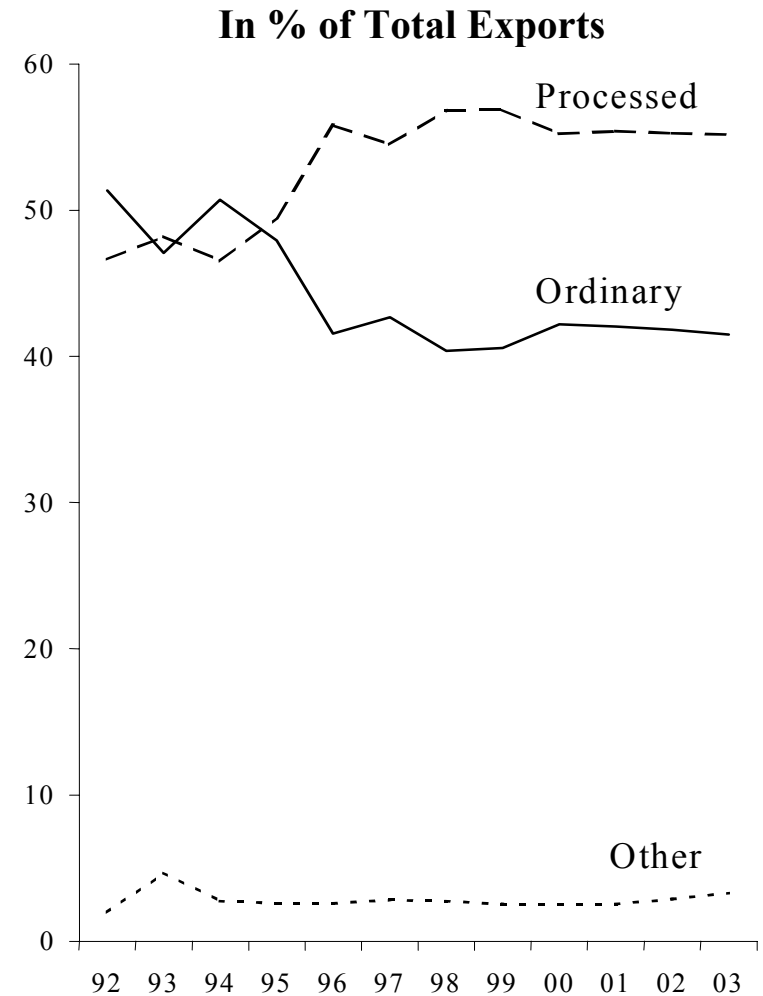
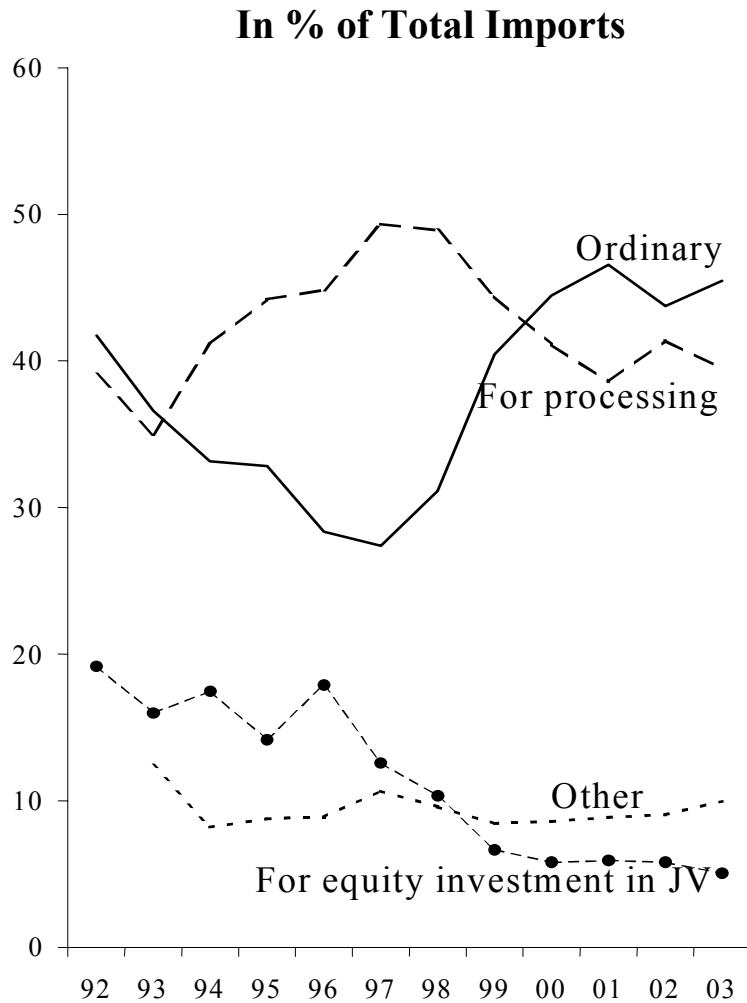




Figure 1 - Processing Trade Drives China's Exports



Source: China's Customs Statistics, authors' calculations.

**Table 1 - China's Trade by Main Partners and Customs Regime
(in % of total trade and US \$ bn)**

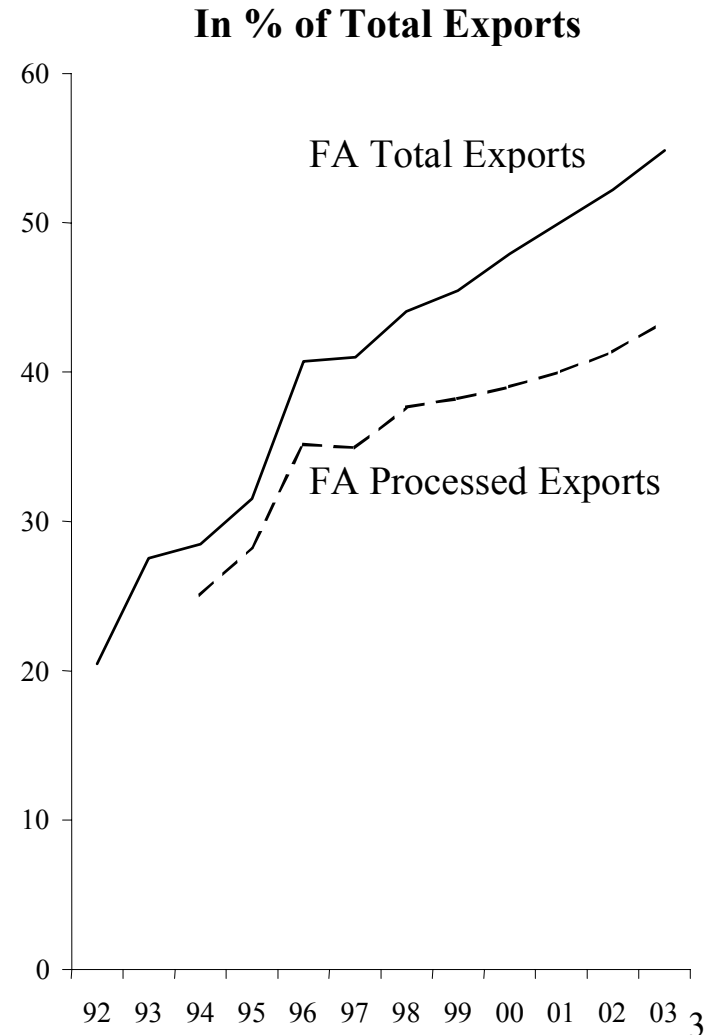
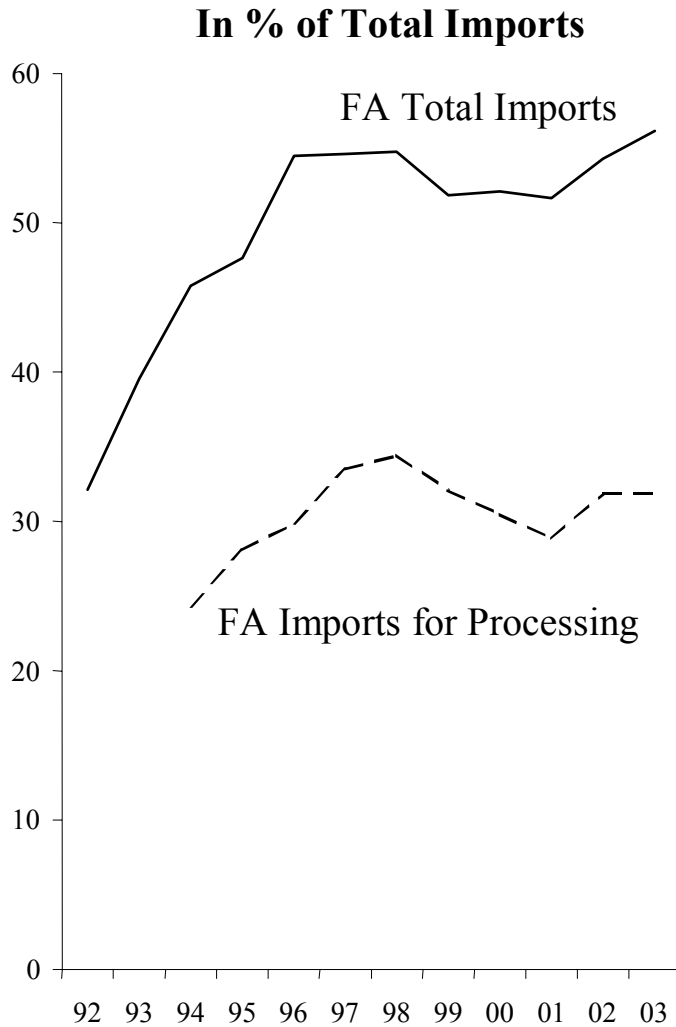
Imports						
	World	3 Dragons*	Japan	EU 15	USA	ROW
Imports by all custom regimes	100	26	18	13	9	33
Ordinary imports	44	7	6	8	5	17
Imports for processing	41	16	8	2	2	12
Other customs regimes	15	3	3	3	2	4
Exports						
	World	3 Dragons	Japan	EU 15	USA	ROW
Exports by all custom regimes	100	25	15	15	21	24
Ordinary Exports	42	8	6	7	7	15
Processed Exports	55	16	9	8	14	8
Other customs regimes	3	1	0	0	1	1
Trade Balance						
	World	3 Dragons	Japan	EU 15	USA	ROW
All custom regimes	30.4	3.2	-5.0	9.7	42.7	-20.2
Ordinary trade	7.1	3.4	1.1	-3.1	6.7	-1.0
Processing trade	57.7	5.9	3.1	19.6	39.9	-10.9
Other customs regimes	-34.4	-6.1	-9.3	-6.8	-4.0	-8.2

* Hongkong, South-Korea, Taiwan

Sources: China's Customs Statistics, authors' calculations.



Figure 2 -Foreign Affiliates are the Engine of China's Trade Expansion



Sources: China's Customs Statistics, authors' calculations.

Table 2 - Foreign Affiliates in China's Trade With Major Partners, 1997-2002 (in % and US \$ bn)

	World	EU-15	USA	Japan	Hong Kong	Singapore	Korea	Taiwan
All Export Flows (% total flows)	100	100	100	100	100	100	100	100
FA Total Exports	52	50	58	62	63	65	49	57
<i>JV</i>	23	21	21	30	27	34	21	15
<i>WFOF</i>	30	28	37	32	36	31	27	42
All Import Flows (% total flows)	100	100	100	100	100	100	100	100
FA Total Imports	54	49	48	67	63	61	63	67
<i>JV</i>	23	31	21	30	28	20	28	16
<i>WFOF</i>	31	18	27	37	36	41	36	52
Overall Trade Balance (bn US\$)	30.4	9.7	42.7	-5.0	47.7	-0.1	-13.0	-31.5
FA Total Trade Balance	9.7	5.0	27.4	-6.0	30.2	0.2	-10.5	-21.9
<i>JV</i>	4.6	-1.8	8.8	-1.5	12.7	0.9	-4.6	-5.0
<i>WFOF</i>	5.2	6.8	18.5	-4.5	17.5	-0.7	-5.9	-16.9

* FA: foreign affiliates; JV: joint venture; WFOF: wholly foreign owned firm.

Sources: China's Customs Statistics, authors' calculations.

**Table 3 - China's Trade by Stage of Production,
1997-2002, (%)**

	Breakdown of Imports		Breakdown of Exports	
	1997	2002	1997	2002
Primary Goods	10.6	10.3	5.1	2.9
Intermediate Goods	65.9	63.3	33.4	37.1
<i>Semi-finished goods I</i>	47.0	35.9	25.3	21.6
<i>Parts & components</i>	18.9	27.5	8.2	15.5
Final Goods	23.5	26.3	61.5	60.0
<i>Consumption Goods</i>	4.4	5.1	48.9	40.3
<i>Capital Goods</i>	19.1	21.2	12.6	19.7
Total	100.0	100.0	100.0	100.0

Table 4 - China's Trade by Region and Stage of Production, 2002 (%)

	Primary Goods	Semi-finished Goods	Parts & components	Capital Goods	Consumption Goods	Total
Export Breakdown (% of World Total)						
World	3	22	16	20	40	100
Asia-Oceania	2	12	10	9	17	51
Western Europe	0	3	2	4	6	15
America	0	4	3	6	13	26
Others	0	2	1	1	4	9
Import Breakdown (% of World Total)						
World	10	36	27	21	5	100
Asia-Oceania	3	25	20	12	3	63
Western Europe	1	3	4	5	1	14
America	2	4	3	3	1	13
Others	4	3	1	0	0	9

**Table 5 - China's High-Tech Trade by Stage of Production
(% of Total Trade)**

	Imports		Exports	
	1997	2002	1997	2002
Semi-Finished Products	1	1	1	1
Parts & Components	6	8	2	6
Capital Goods	4	6	2	5
Consumption Goods	0	0	0	0
Total	11	15	7	12

Table 6 - China's High-Tech Trade by Stage of Production and Region, 2002 (%)

Imports					
	Asia-Oceania	Western Europe	America	Others	World
Semi-Finished Products	3	1	1	0	5
Parts & Components	40	5	6	1	52
Capital Goods	27	5	8	1	42
Consumption Goods	0	0	0	0	1
Total	70	11	15	3	100
Exports					
	Asia-Oceania	Western Europe	America	Others	World
Semi-Finished Products	5	2	2	1	9
Parts & Components	33	5	8	1	47
Capital Goods	17	8	14	2	41
Consumption Goods	1	1	1	0	3
Total	56	15	25	5	100

Table 7 - China 's High-Tech Imports by Region and Type of Firms, 2002 (%)

<i>Partner</i>	Chinese	JV*	WFOF*	Total
Asia-Oceania	17	15	39	70
Western Europe	6	4	2	11
America	8	3	4	15
Other	2	0	0	3
World	33	22	45	100

* FA: foreign affiliates; JV: joint venture; WFOF: wholly foreign owned firm.

Source: China's Customs Statistics, authors' calculations.

**Table 8 - China 's High-Tech Exports by Region and Type of Firms
2002 (%)**

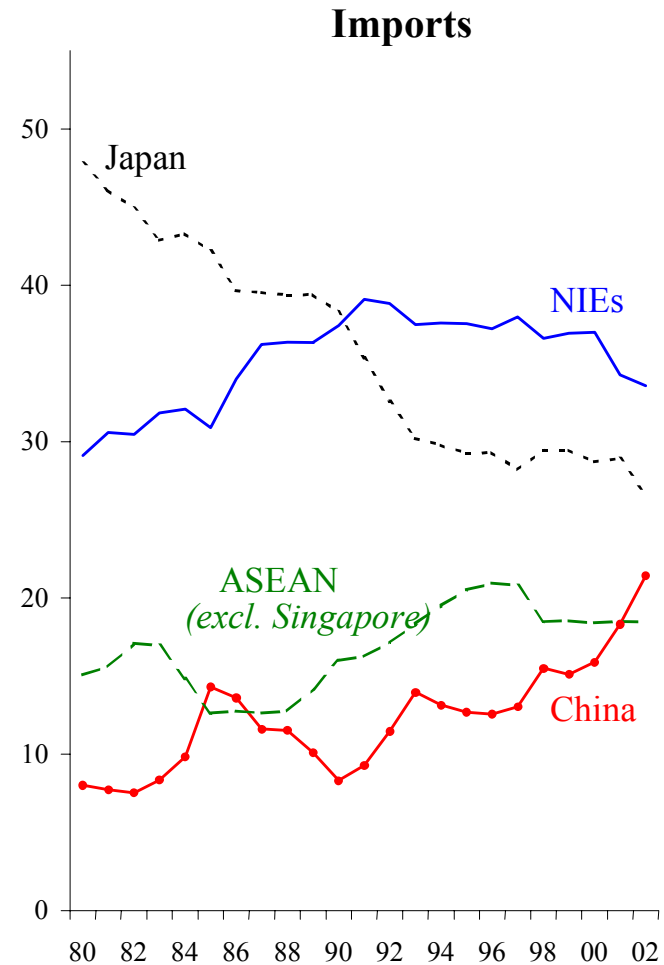
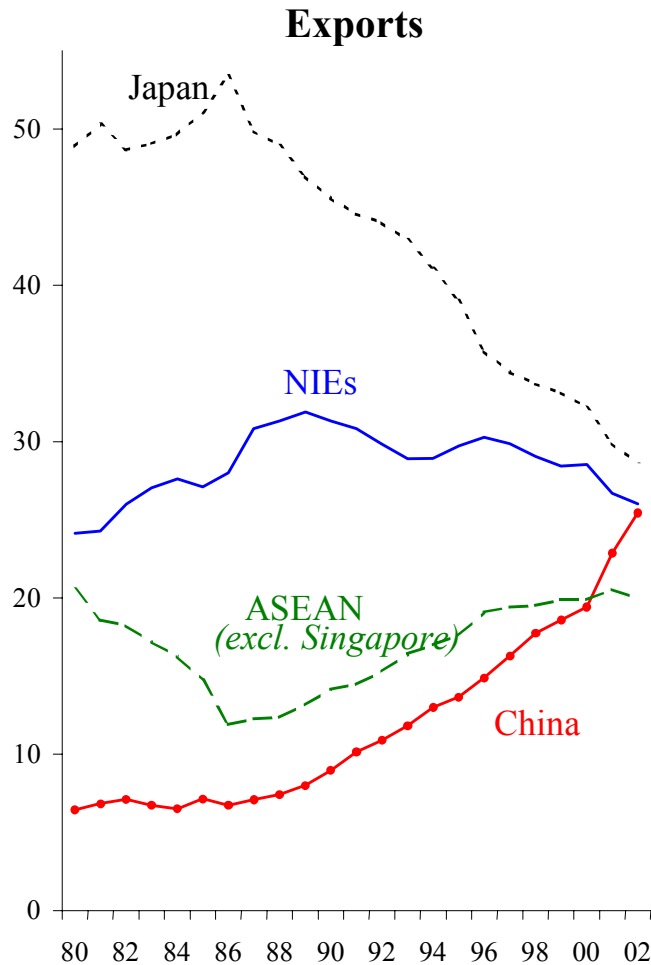
<i>Firm Type</i>	Chinese	JV	W FOF	Total
<i>Partner</i>				
Asia-Oceania	11	16	28	56
Western Europe	4	5	6	15
America	8	5	12	25
Other	2	2	1	5
World	24	29	47	100

* JV: Joint venture; WFOF: Wully foreign owned firm.

Source: China's Customs Statistics, authors' calculations.



**Figure 3 - The Rise of China in East-Asian Trade
(in % of Total Trade)**

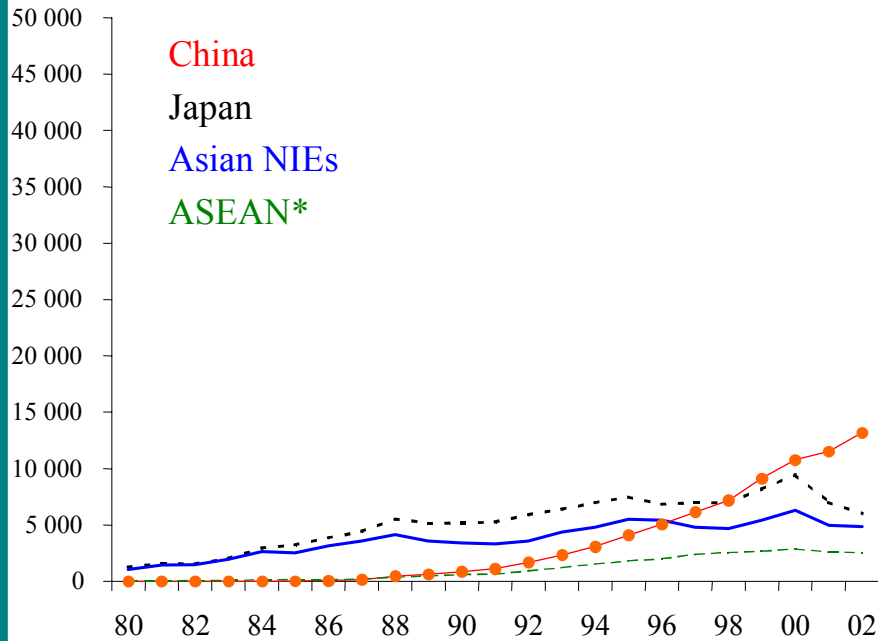


Sources: CEPII-CHELEM data base, authors' calculations.

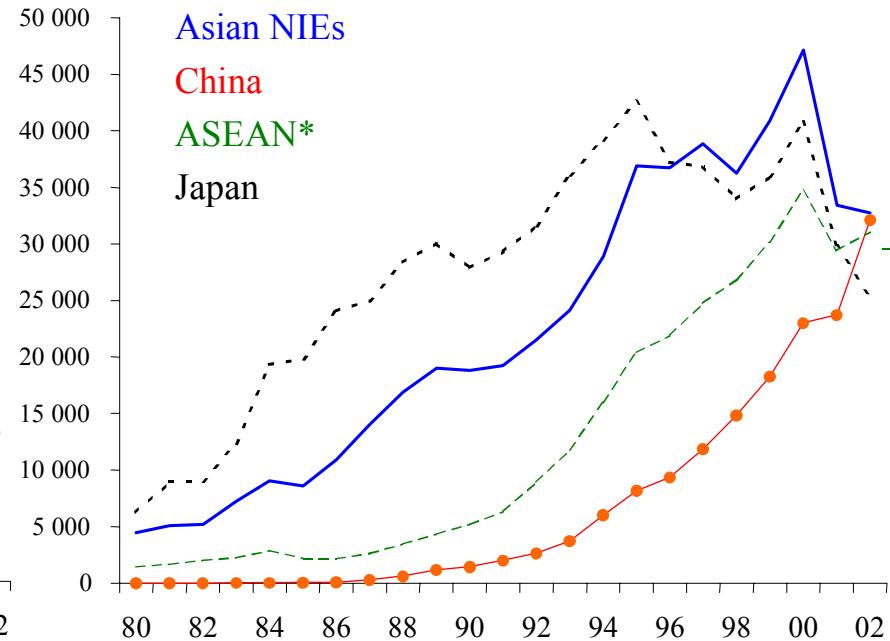


**Figure 4 - The Rise of China in US Imports from East-Asia
(thousand US\$)**

Electrical Goods (Appliance & Machinery)



Electronics



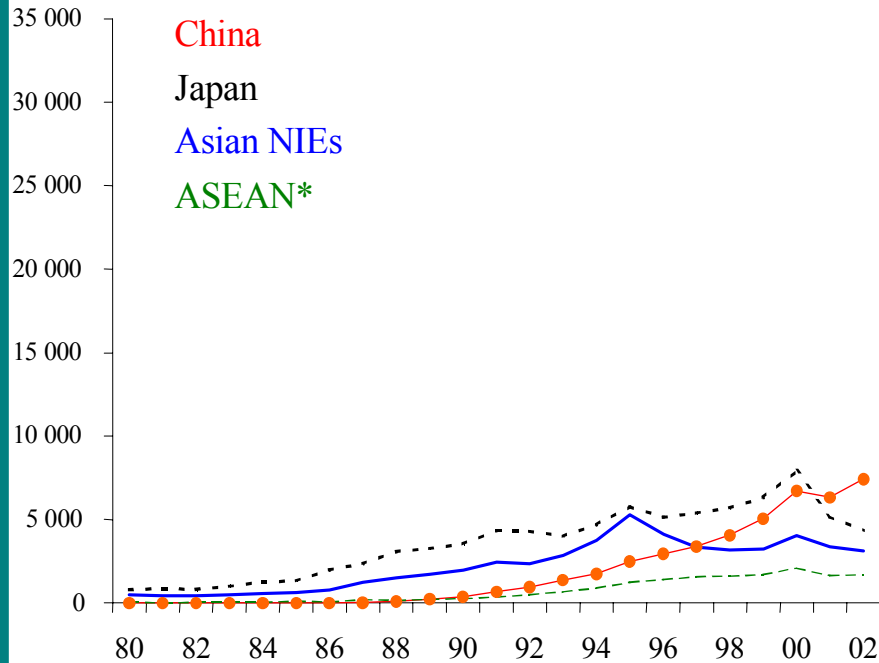
* Excluding Singapore.

Sources: CEPII-CHELEM data base, authors' calculations.

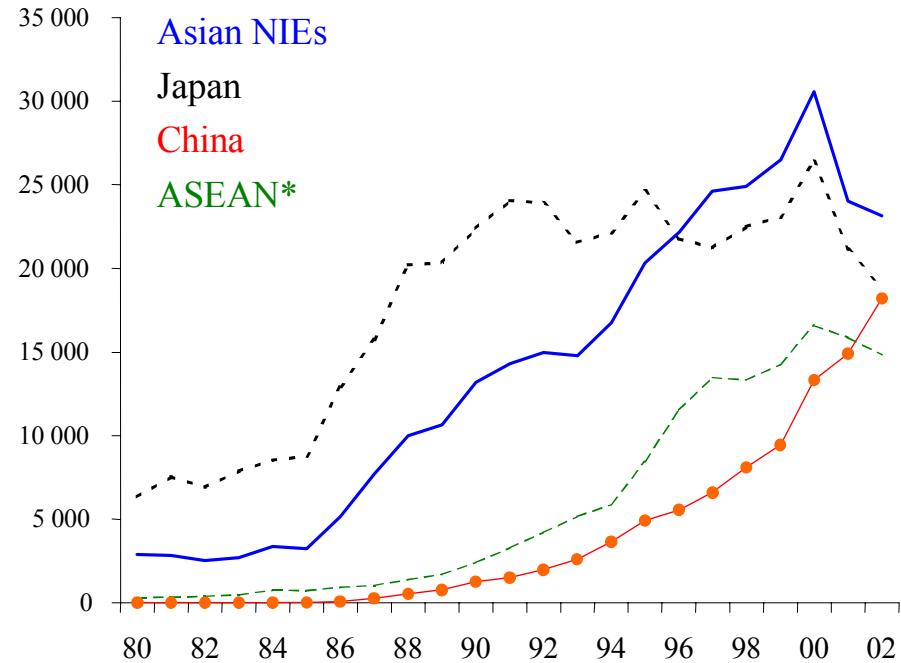


Figure 5 - The Rise of China in EU-15 Imports from East-Asia (thousand US\$)

Electrical Goods (Appliance & Machinery)



Electronics

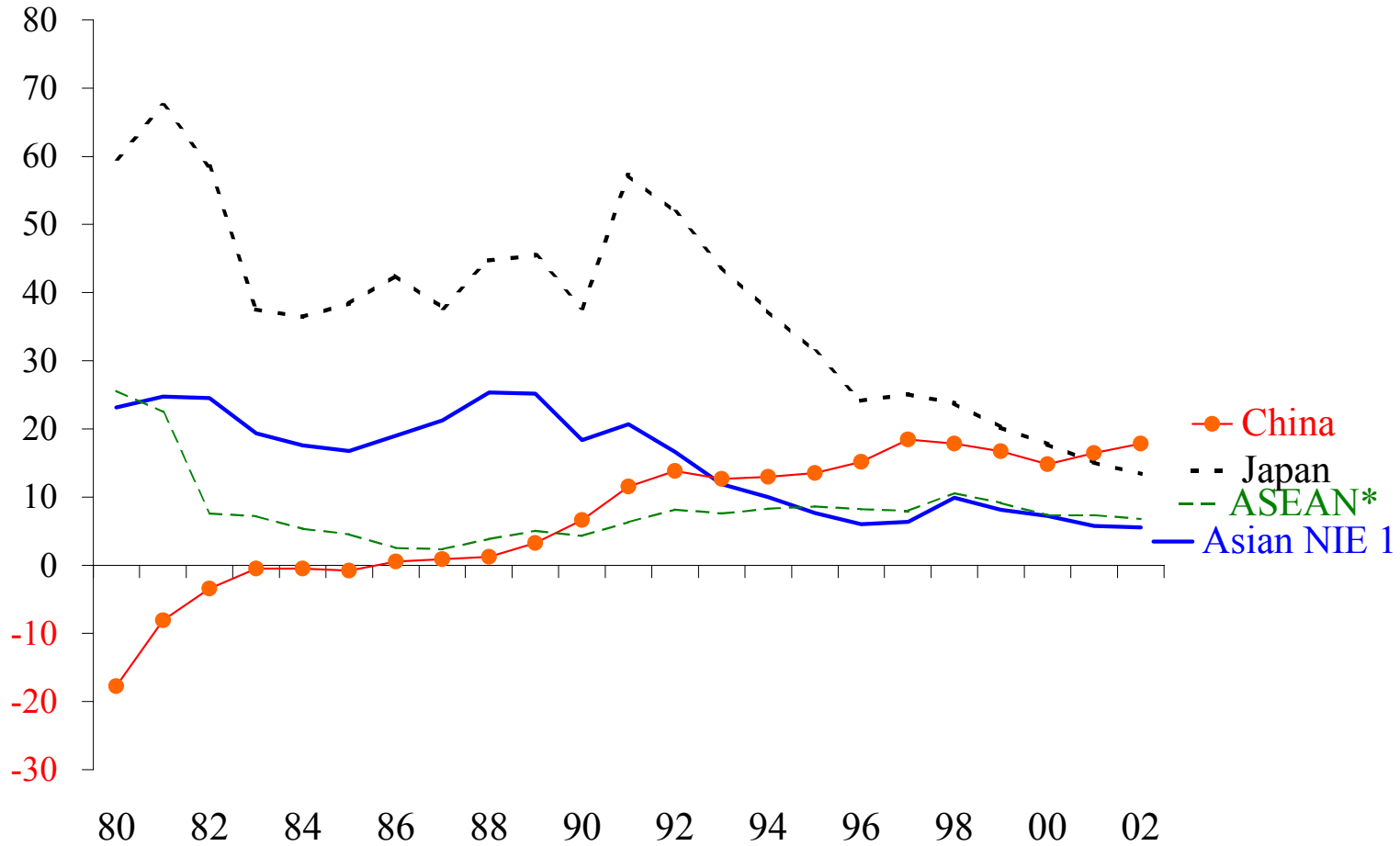


* Excluding Singapore.

Sources: China's Customs Statistics, authors' calculations.



Figure 6 - East-Asian Countries ' Share in Total US Trade Deficit (% of US Total Trade Balance)



* Excluding Singapore.

Sources: CEPII-CHELEM data base, authors' calculations.