

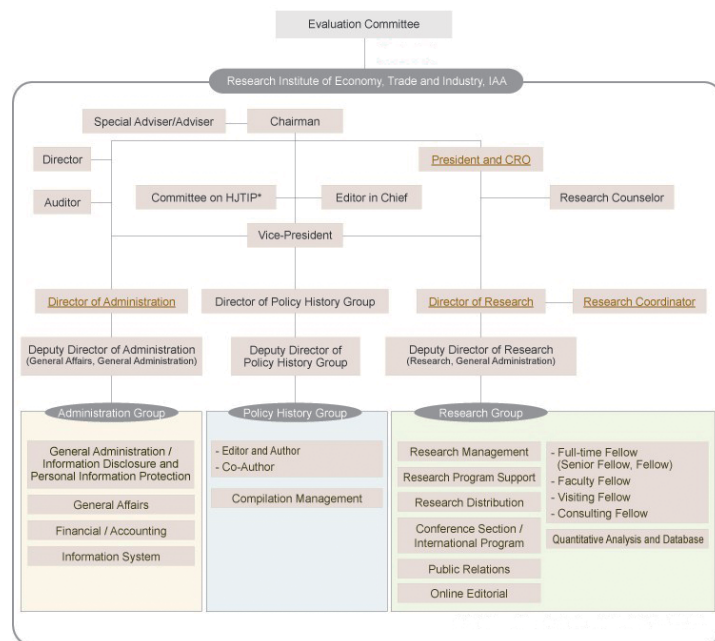
Overview of RIETI (As of the end of March, 2008)

Established: April 1, 2001

Number of fellows: 57 (of which 14 are resident)

Number of administrative staff: 81

Primary source of funds: Management grants (from the Ministry of Economy, Trade and Industry)



Purpose of RIETI

The Research Institute of Economy, Trade and Industry (RIETI), an incorporated administrative agency, was established on April 1, 2001 to conduct extensive policy research and formulate policy recommendations, leveraging its location in Kasumigaseki and take full advantage of the synergy among policymakers, researchers, industry leaders, and other stakeholders.

RIETI promotes policy formulation backed with theoretical and analytical research from a global perspective that is not confined within the traditional framework of thinking, with the ultimate goal of building a mature and dynamic Japanese society. To this end, we have established a number of policy domains that meet the needs of Japan's economic and industrial policies, within which the individual research projects interact in an organic manner. To effectively and efficiently disseminate the results of its research and promote policy recommendations, RIETI makes aggressive use of its website, publications and a variety of other tools. RIETI pledges to continue contributing to policy debate and policy making through an ever active delivery of policy recommendations.

With its population now in decline, it is vital that Japan develop its economy and revamp its social system. Understanding the urgency, RIETI is undertaking important surveys and research under its second five-year medium-term plan. Over the course of this plan, RIETI is conducting an array of unique studies in four major policy research domains and adjacent research areas (see details of our research on the reverse side). Thus it is vital for RIETI to assemble prestigious researchers, collect and create unique data, and establish human and organizational networks throughout Japan and beyond. Fortunately, our achievements to date have been attracting growing attention from researchers in Japan and overseas, and we have been able to develop a number of valuable databases and strengthen cooperation with overseas research organizations. Fiscal 2008 marks the halfway point in our quest to achieve the goals under the second five-year medium-term plan. We remain committed to achieving our goals of linking academic outcomes with policies. I sincerely hope that we can continue to count on the guidance and support of all those involved in our activities.

OIKAWA Kozo, Chairman

With the progress of globalization, East Asia has been rapidly emerging as the workshop of the world. But for the region—including Japan—to sustain its growth in the 21st century, it must transform itself from a manufacturing powerhouse into a creativity powerhouse. This in turn requires comprehensive socioeconomic reforms that encourage diversity and mobility, promotion of innovation on a sustainable basis, and productivity improvement. We need to build a system that generates and shares knowledge across East Asia, not only in the spheres of research and education, but in other areas such as the economy, industry, business, and culture. Naturally, this system should be open to the world.

I believe that RIETI can play an important role in helping Japan achieve this transformation. Addressing a broad array of domestic and international issues as an institute where researchers can simultaneously pursue academic studies and policy research, RIETI is capitalizing on its strength of enabling studies based on valuable empirical data.

RIETI brings together researchers from diverse backgrounds in Japan and from abroad. These researchers interact not only with each other but with a broad range of policymakers and outside experts. Operating in this dynamic environment, RIETI develops policy proposals based on high academic standards and innovative ideas and, through these activities, aspires to become a platform for creating and exchanging wisdom. I look forward to serving this institute to the best of my ability so that we can achieve this goal.

FUJITA Masahisa, President and Chief Research Officer

Research Counselor/Editor in Chief of HJTIP*

	Name	Affiliation	PRDs
Research Counselor	YOSHIKAWA Hiroshi	Professor, Faculty of Economics, The University of Tokyo	I
Research Counselor	NAGAOKA Sadao	Director and Professor, Institute of Innovation Research, Hitotsubashi University	II
Research Counselor	WAKASUGI Ryuhei	Professor, Institute of Economic Research, Kyoto University	III
Editor in Chief, HJTIP	ODAKA Konosuke	Professor emeritus, Hosei University & Hitotsubashi University	IV

*The History of Japan's Trade & Industry Policy



Research Institute of Economy, Trade and Industry, IAA

11th floor, Annex, Ministry of Economy, Trade and Industry (METI)

1-3-1, Kasumigaseki Chiyoda-ku, Tokyo, 100-8901 JAPAN

Phone: +81-3-3501-1363 Fax: +81-3-3501-8577

Website: <http://www.rieti.go.jp/en/>

email: info@rieti.go.jp

Research Institute of Economy,
Trade and Industry, IAA

Research Themes

Policy Research Domains (PRDs)

I. Maintaining Economic Dynamism under the Adverse Demographic Conditions of Low Fertility and Aging Population

II. Promoting Innovation and Strengthening International Competitiveness

III. Formulating Japan's Strategy in Response to Globalization and Deepening Economic Interdependence in Asia

IV. Compilation of the History of Japan's Trade and Industry Policy

Adjacent Basic Research Areas*

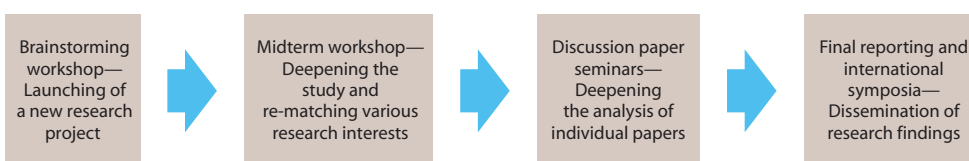
A. Institutions related to financial and labor markets as well as new corporate laws and governance

B. Regulatory reforms in such areas as electric power, transportation and health care and evaluation frameworks for deregulation

C. Compilation of micro panel data of firm activities, trade, energy and the elderly; and model building and operation

Research Process

To further improve on the quality of research, RIETI ensures that at least three discussion fora are organized for each research project through workshops and symposia, where Japanese and foreign experts and policymakers participate to deepen the research.



*Research themes RIETI sets independently concurrently with the PRDs.

Classification of Fellows

Senior Fellows and Fellows: Full-time resident fellows with previous affiliations to governmental organizations, research institutes, and universities both in Japan and abroad.

Consulting Fellows: Fellows who hold full-time positions in governmental as well as other organizations and participate in RIETI's research activities while off-duty.

Chief Research Officer

Faculty Fellows: Fellows who hold concurrent positions as university professors.

Visiting Fellows: Professors at foreign universities who undertake studies on a relatively short-term basis, with RIETI serving as their research base.

Symposia and Seminars

Symposia and seminars are organized to disseminate research findings. Additional efforts are made for simultaneous reporting and on-demand distribution as well as immediate publication of minutes and conference handouts on the internet.

Policy Symposia

To present, disseminate and deepen research results, RIETI organizes policy symposia with a wide range of invited experts including policymakers, researchers, private sector experts, and journalists from Japan as well as from overseas. Executive summaries of debates at symposia are distributed via press releases, our website, and other channels.

BBL (Brown Bag Lunch Seminars)

At universities and research institutes in the United States, brown-bag lunch meetings are often held among researchers, professors, and students. The name originates in the brown paper bags in which participants bring their lunches. RIETI's BBL seminars which are held during lunch hours, invite Japanese and foreign guest lecturers, and provide a venue for candid exchanges of opinions on a variety of policy issues, transcending industry-government-academia boundaries.

Website [http://www.rieti.go.jp/en/]

RIETI's Website is available in Japanese, English, and Chinese to introduce its activities and research fellows to a wide audience. The Website focuses on Discussion Papers, which form the outcomes of our research, and fellow-authored columns that incorporate policy recommendations. Further in-depth information is available on the Website in pages set up by individual fellows and study groups. We take pride in the Website's valuable contents, many not offered elsewhere, such as the "Japan Industrial Productivity Database 2008," fundamental material for analyzing Japan's economic growth and structural changes in industry, and the results of the Asian Monetary Unit (AMU) and the AMU Deviation Indicators of East Asian Currencies, which will contribute to foreign exchange policy coordination in East Asia and help to improve the surveillance function of monetary authorities.



Publications

RIETI's publications cover a diverse array of themes and appear under the imprint of various publishers. The contents range from studies of a high academic standard that have undergone peer review in their respective disciplines to timely policy study topics for a wider audience.

Upper row from left:

◆ *Productivity and Japan's Economic Growth*
Written and edited by FUKAO Kyoji and MIYAGAWA Tsutomu, Univ. of Tokyo Press (2008)

◆ *Economic Analysis of Regulatory Reforms*
Written and edited by HATTA Tatsuo and TANAKA Makoto, Nikkei Publishing Inc. (2007)

◆ *M&A in Japan*
Written and edited by MIYAJIMA Hideaki, Toyo Keizai Inc. (2007)



Lower row from left:

◆ *Corporate Governance in Japan*
Written and Edited by AOKI Masahiko, Gregory JACKSON and MIYAJIMA Hideaki, Oxford Univ. Press (2007) (available only in English)

◆ *Productivity in Asia*
Written and edited by Dale JORGENSON, KURODA Masahiro and MOTOHASHI Kazuyuki, Edward Elgar Publishing (2007) (available only in English)



Publicity Materials

To promote wide dissemination of research results and subsequent contributions that invigorate policy debate, a variety of publicity materials are available in print and downloadable from our Website.



Symposium Proceedings Discussion Paper (available only in JP or in ENG) Annual Report (available in JP, ENG, CN)

Highlight

Highlight is a quarterly newsletter that keeps readers up to date on the activities of RIETI, including brief reports on symposiums and seminars, reviews of new publications, and columns written by RIETI fellows. In fiscal 2007, a new column titled "Research Digest" was set up to introduce newly issued Discussion Papers by featuring underlying research motivations and principal speaking points in an easy-to-understand manner by way of interviews with the authoring fellows.



Highlight

The above Publications and Publicity materials are available only in Japanese unless otherwise specified.