

RIETI BBL Seminar Handout

“Japan - Hawaii Socio-Economic Innovation”

October 31, 2022
Denise Eby KONAN

<https://www.rieti.go.jp/jp/index.html>



COLLEGE OF SOCIAL SCIENCES

University of Hawai'i at Mānoa

Japan Hawai'i Socio-Economic Innovation: Economic Development and Climate Resilience

October 31, 2022

Denise Eby Konan

**Dean, College of Social Sciences, University of Hawai'i at Mānoa
President, Northeast Asia Economic Forum**

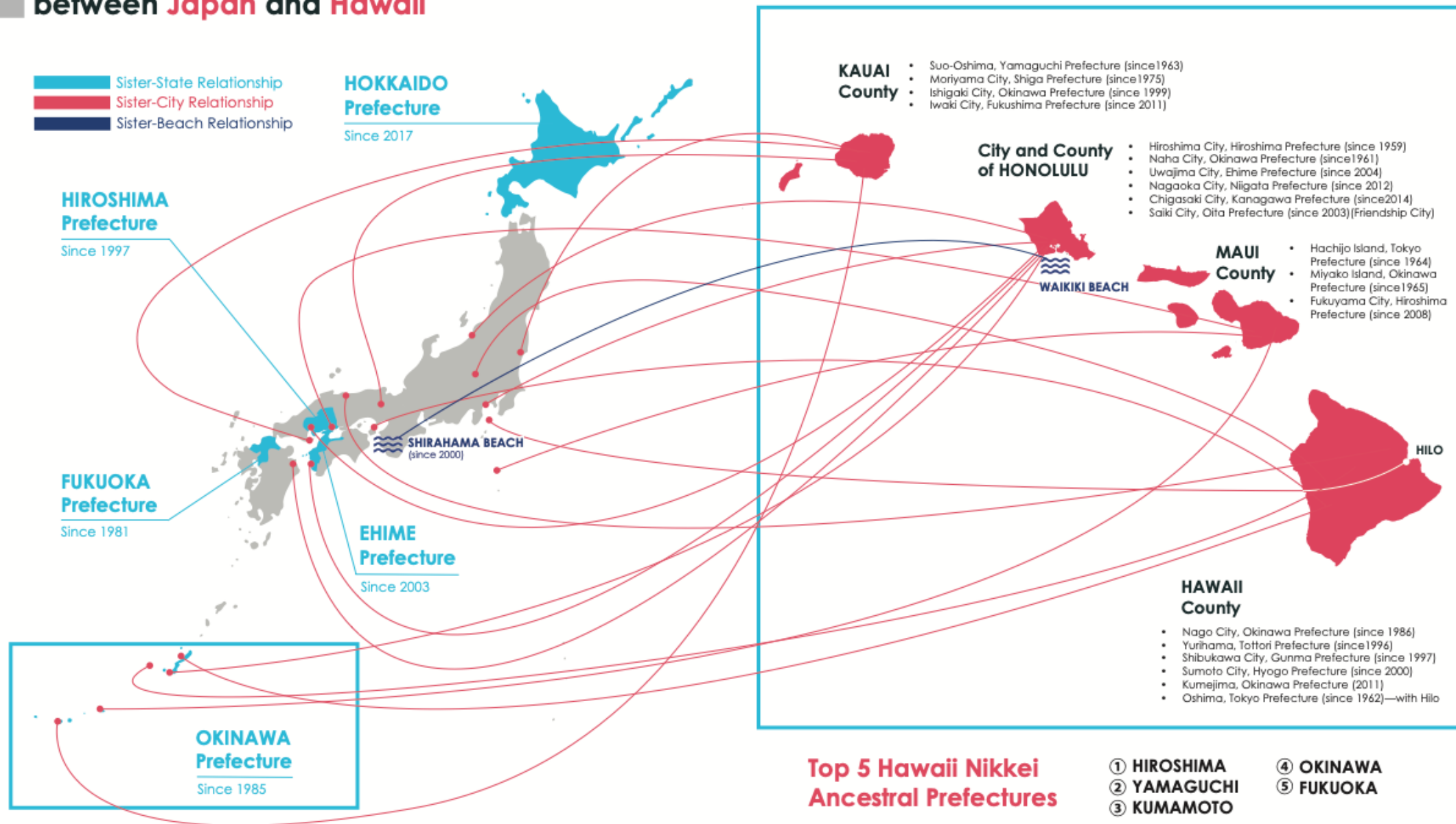
Japan Hawai'i Historic Foundation



[Wikipedia](#): Bronze statue of Japanese sugarcane workers erected in 1985 on the centennial anniversary of the first Japanese immigration to Hawaii in 1885. Japanese Pavilion, Kepaniwai Heritage Gardens, Iao Valley State Monument, Maui, Hawaii.

- Earliest Japanese arrived by shipwreck in 1806
- 1881 King David Kalākaua visited Japan to meet Emperor Meiji and discuss treaty
- 150th Anniversary Gannenmono Japanese immigrants in 1985 (about 150 people came in 1868)
- Today – Japanese Nikkei are considered to be the third largest ethnic group in Hawai'i

Sister State & Sister City Relationships between Japan and Hawaii



Japan Hawai'i Innovation Initiative



Byōdō-In Temple is a non-denominational shrine located on the island of O'ahu in Hawai'i at the Valley of the Temples, replica of Kyōto Byōdō-In temple. [Wikipedia](#)

- Socio-Economic Initiative of College of Social Sciences, UH Mānoa
- Recognized as an **International Contribution Project** by **Council for Better Corporate Citizenship (CBCC)**, an affiliated organization of **Keidanren: Japan Business Federation**
- Corporations and individuals in Japan may make tax-deductible financial contributions via CBCC

Japan Hawai'i Innovation Initiative

- Integrate Nikkei (日系), Hawaiian and other cultural perspectives to create an innovative platform based on academics, research, discovery and international collaboration
1. Socio-Economic Dialogue
 2. Education
 3. Sustainable Tourism
 4. Risk, Resilience & Sustainability



COLLEGE OF SOCIAL SCIENCES

University of Hawai'i at Mānoa™



Japan Hawai'i: Socio-Economic Dialog



In 1964, Prince Akihito and Princess Michiko blessed this Japanese garden and released Koi fish into the pond at [the East West Center](#).

- Japanese businesses in Hawai'i employ about 17,000 people
- Japanese invested \$400 million commercial business since 2014
- Hawai'i is hub for US-Japan geopolitical alliances
- Pre-2020, Japanese visitors spent \$2 billion per year
- Surfing became official sport at 2020 Tokyo Olympics

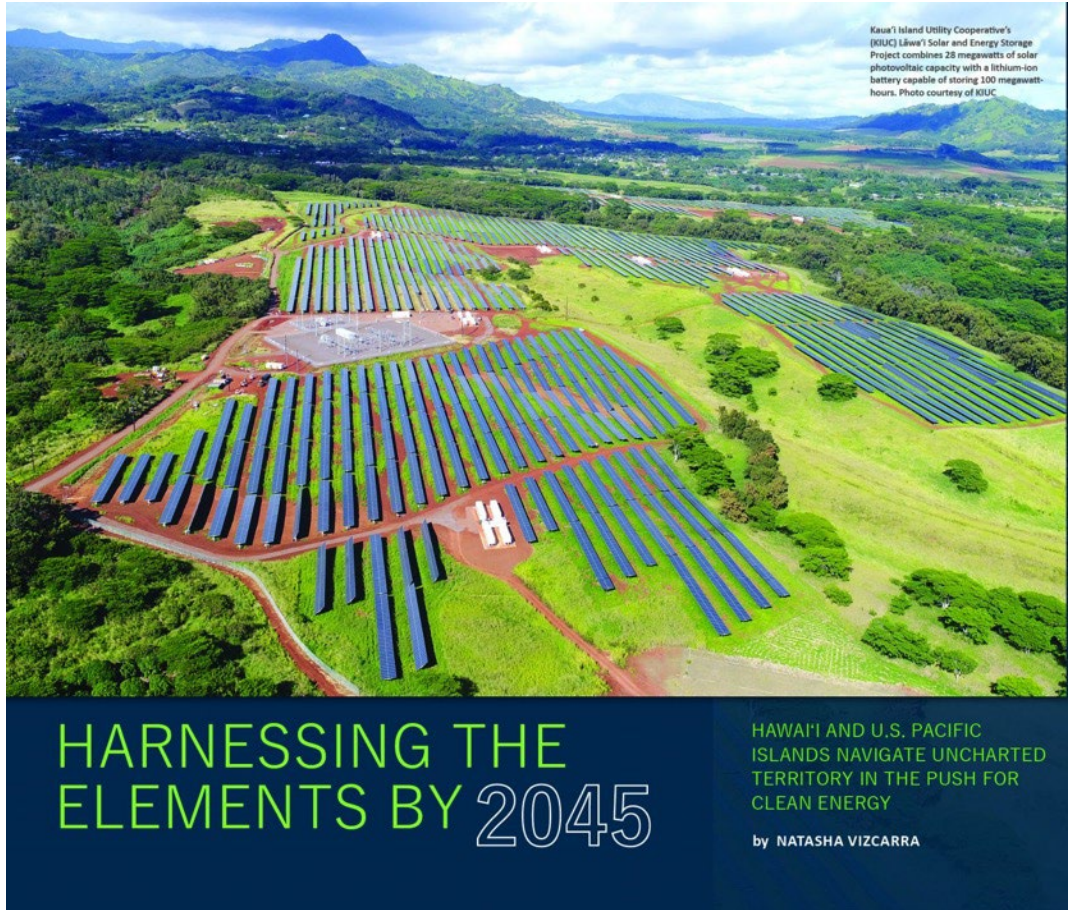
Japan Hawai'i: Socio-Economic Dialog

- Global Economic Integration
- Dynamic economies are adapt to changing times
- Whole of society: University, business, government, civil society
- Leadership in the Asia-Pacific region
- Socio-economic dialogs to share knowledge, foster collaboration, and promote innovation

TOPICS

- Energy and Decarbonization
- Digital Economy
- Smart Cities
- Cyber Security
- Geo-Political Alliance
- Tourism
- Resilience and Sustainability

Japan Hawai'i: Energy & Decarbonization



- 2007: Act 234 GHG emissions to below 1990 levels by 2020 – Achieved!
- 2015: 100% renewable portfolio standard by 2045. Hawai'i is first state in USA to declare intent to eliminate carbon on the grid.
- 2021. Concurrent Resolution 44. Hawai'i is first state in USA to declare climate emergency and call for a statewide commitment to

DECARBONIZE

Japan Hawai'i: Energy & Decarbonization

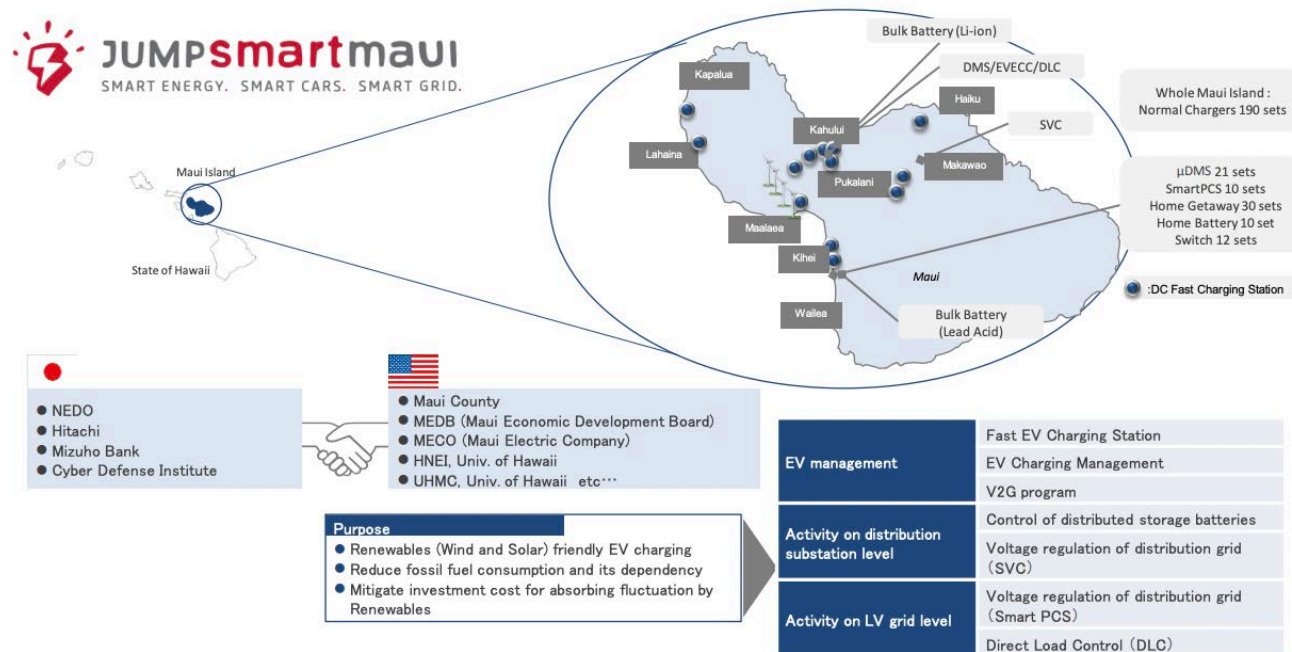


Figure 1 Whole picture of Japan – U.S. Collaborative Smart Grid Demonstration in Maui, Hawaii (JUMPSmartMaui)

JumpSmartMaui

Smart grid demo project on Hawai'i's Maui Island with NEDO, Japan & Hitachi

Stabilize intermittent power via integration of EV charging and discharging

METI & US DOE

Japan Hawai'i: Digital Economy

 **Orchestrating** a brighter world

NEC

- NEC and Hawai'i Department of Transportation
- Thermal temperature screening and facial imaging project at Hawaii's five major airports that accept trans-Pacific flights.
- Facial imaging technology allows to pull passengers aside who have been detected to have an elevated body temperature of 100.4 degrees Fahrenheit (38 degrees Celcius) and higher

Japan Hawai'i: Digital Economy



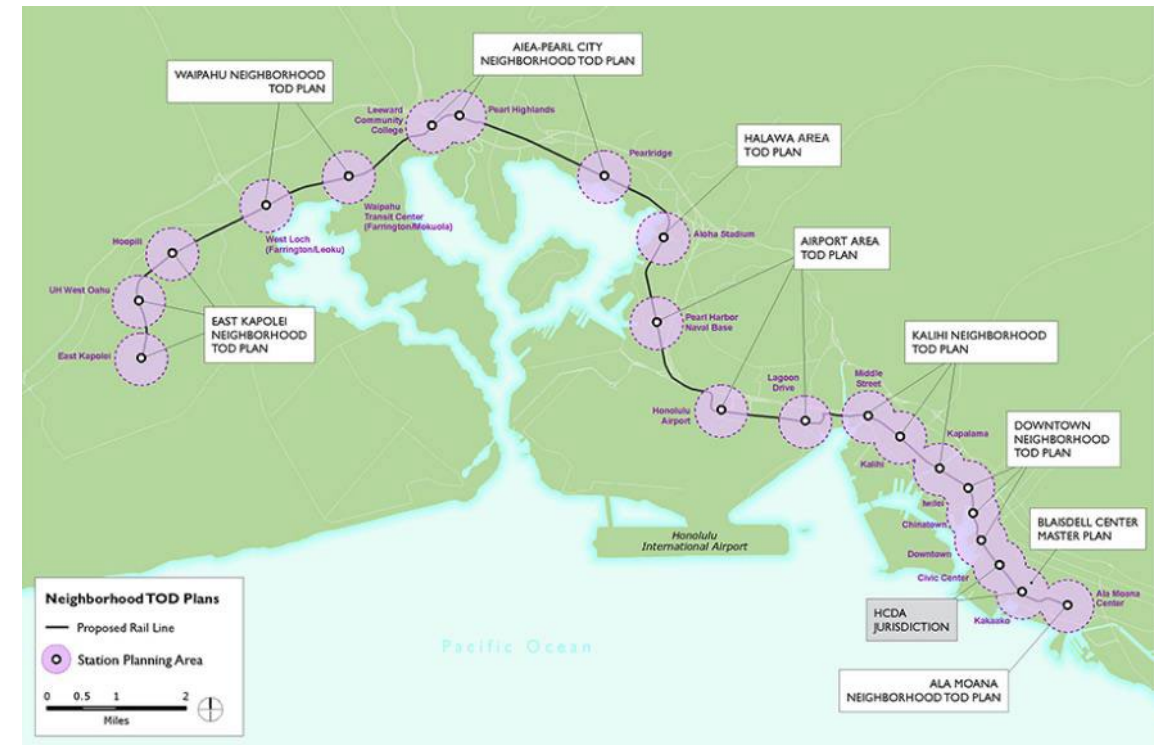
- Honolulu Rail Construction 2022
- Hitachi is providing first driverless Rail Transit System in the U.S.A
- Changing values from 'on time' to 'on demand'
- Automatically control train operations to optimize timing of train based on analysis of passengers numbers using data obtained by sensors

Japan Hawai'i: Digital Economy

Rail system: opportunity for new community development



Source: Tokyu



Source: HART

Japan Hawai'i: Smart Cities



Kashiwas-no-ha Smart City

- Kashiwas-no-ha Smart City model
- Environmental, healthy, and economically vibrant city
- Multigenerational considerations
- Innovation through AI, urban design, and mixed use
- University, city, technology, industry collaborations

Can this apply to Honolulu's TOD and UHM College Town revitalization?

Japan Hawai'i: CyberHawaii Initiative



- CyberHawaii: Transforming O'ahu into Cyber Security Silicon Valley
- University, industry collaborations
- Secure enclave via the Homeland Security Information Network
- Workforce development, K-12 pathways to University degrees
- National Security Agency Hawai'i, Joint Intelligence Operations Center Pacific, U.S. Indo-Pacific Command

Japan Hawai'i: Geopolitical Alliance



Source: [Wikipedia](#). President Obama and Prime Minister Abe visit Honolulu Arizona Memorial

- Hawai'i is hub for US-Japan relations and regional engagements
- APEC 2011
- East West Center
- Hawai'i Asia Pacific Institute
- Daniel K. Inouye Asia Pacific Institute for Security Studies
- U.S. Indo Pacific Command

Northeast Asia Economic Forum



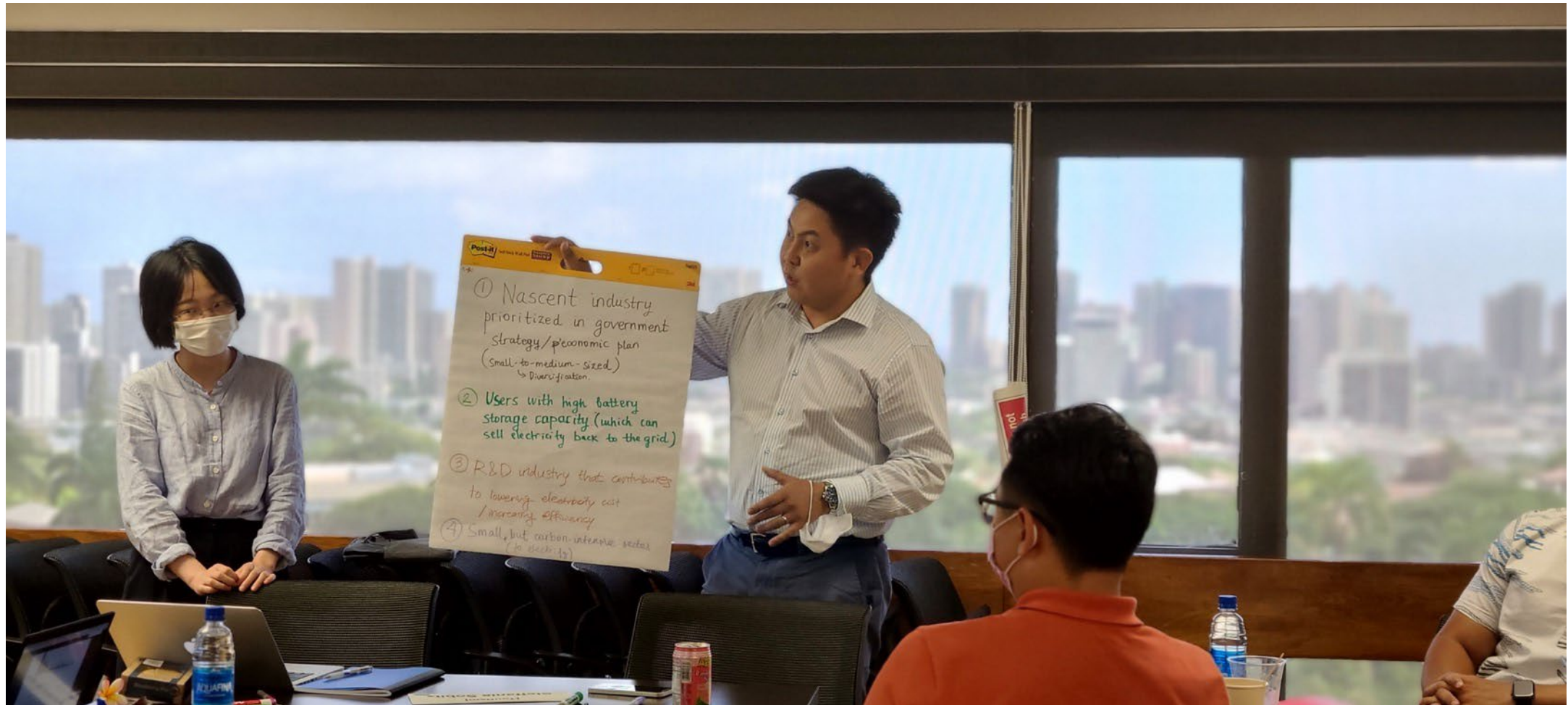
- Advance knowledge & mutual understanding on regional economic cooperation.
- Network of diverse leaders across sectors, for meaningful collaboration and relationships.
- Next generation of leaders by offering transformational experiences and lasting relationships.
- Regional peace and economic cooperation among the people of Northeast Asia, the Pacific, North America, and beyond.
- U.S., Japan, China, Korea, Russia and Mongolia

Northeast Asia Economic Forum: ELP



- Emerging Leaders Program
- U.S., Japan, China, Korea, Mongolia, Russia, Taiwan
- Island of O‘ahu is ‘the Gathering Place’ and ideal venue to foster meaningful dialogs
- Indigenous values of aloha ‘āina
- Hot topics: Future of Work; Regenerative Tourism, Digital Economy, Decarbonization

Northeast Asia Economic Forum: ELP



Northeast Asia Economic Forum: ELP



Northeast Asia Economic Forum in
Waikiki with Dolan Eversole

- NEAEF Emerging Leaders Program in Waikīkī to learn from Hawai'i experiences and design post-pandemic approaches

Japan Hawai'i: Education



This diversity and Hawai'i's spirit of *aloha*—a term that refers to the mutual regard, caring and affection felt and expressed among people from all walks of life—contributes to a campus environment we think you'll agree is unique.

- People to people relations through student exchange and collaborative educational experiences
- Virtual classes and study abroad
- Joint curriculum, dual certificates
- Emerging leaders programs
- Scholarships and fellowships
- Over 16,000 Hawai'i students study the Japanese language

Japan Hawai'i: Education



- UH Mānoa, ranks in top 1% of international and national universities (2022 Times Higher Education World Rankings)
- Founded in 1907, pioneered Japanese Studies in 1920
- Strong Nikkei student presence, with 38% identifying as Asian
- Japanese university Collaborations: Tohoku, Keio, Waseda, Hitotsubashi, U Tokyo, Meiji Gakuin, Kobe, Kagoshima, etc (35+)

Japan Hawai'i: Education



Meiji Gakuin University Students learn hula dancing from University of Hawai'i at Mānoa students, Photo credit to Dan Ferguson

- UH Mānoa educational programs welcome Japanese students for a few weeks, semester, or year
- Work and study together promotes lasting friendships and understanding
- Authentic experiences build global scholars who are poised to have impact on the world
- Language and cultural learning

Japan Hawai'i: Education



Nichi-Bei Internship Program

- Japan-America Society of Hawai'i (JASH) and UH Mānoa College of Social Sciences
- Train next-generation leaders with “Different Perspectives” through classroom and work experiences
- Japanese students will be placed with O'ahu businesses and be mentored

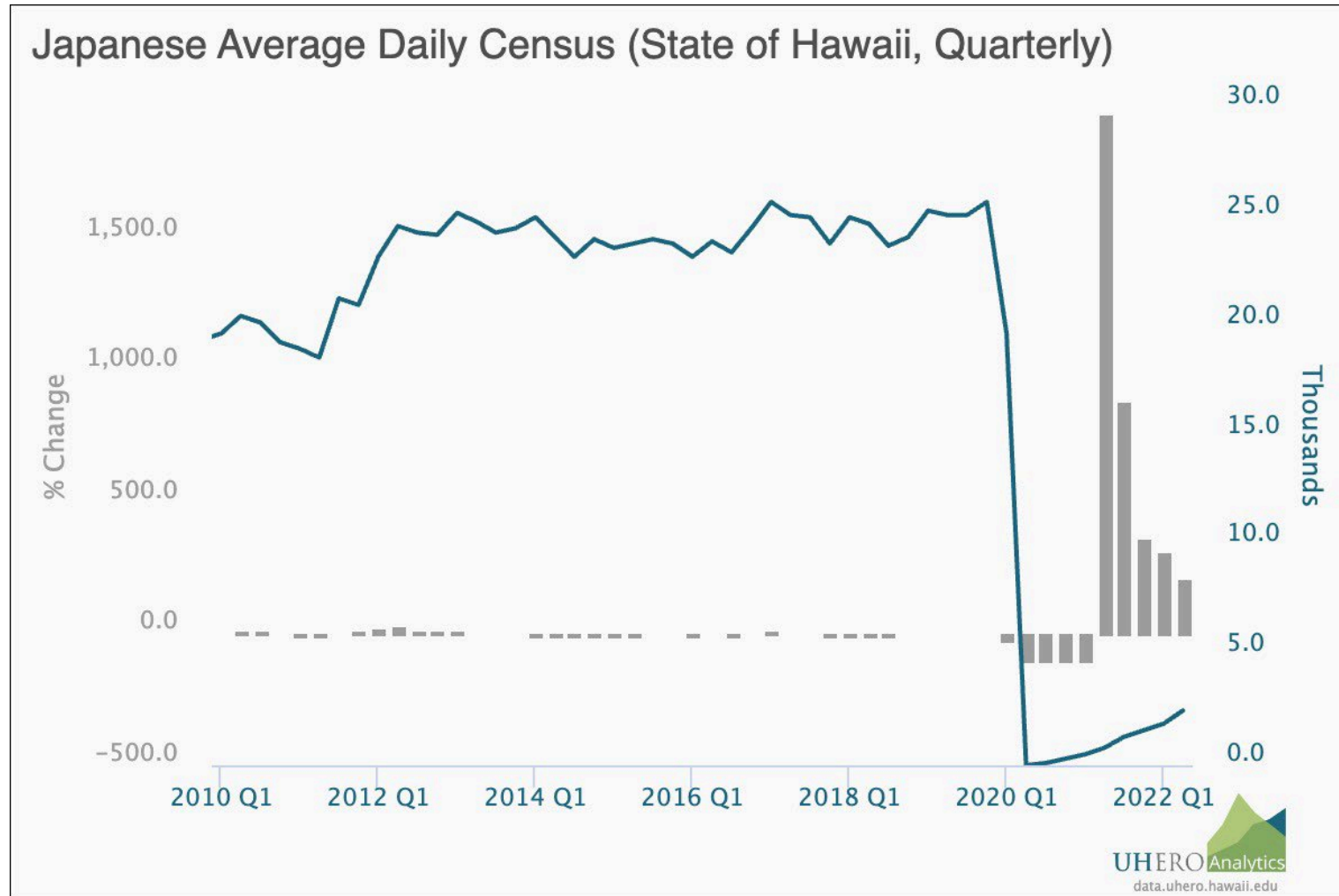
Japan Hawai'i: Sustainable Tourism



- Research, education, and policy dialog to promote management of tourism to balance:
 - Economy
 - Environment
 - Social, cultural and spiritual
- Balancing the needs of:
 - Visitors
 - Industry
 - Host communities and cultures



Japan Hawai'i: Sustainable Tourism



- Pre-2020, Japanese visitors to Hawai'i spent \$2 billion per year
- Hawai'i Safe Travels cautiously reopening

Japan Hawai'i: Mālama Hawai'i



Meiji Kaguin University students at traditional Hawaiian Taro farm.

“That relationship between people and place grows stronger every time you mālama (give back).

When you give back - to the land, the ocean, the wildlife, the forest, the fishpond, the community - you're part of a virtuous circle that enriches everything and everyone.

Including your experience as a visitor."

Hawai'i Tourism Authority

Japan Hawai'i: Risk, Resilience, Sustainability



- Increased risk with climate change, and public health
- Insurance, banking, medicine, IT
- ESG responsibilities
- Climate adaptation
- Multi-Hazards
- Sustainability

Japan Hawai'i: Risk, Resilience, Sustainability



- Workshops and conferences:
 - Risky Behaviors (Economics of Risk)
 - Multi-Hazards
 - Public Health
 - Northeast Asia Economic Forum
- Certificates and training
- Partners: Tokio Marine, First Insurance Company of Hawai'i, Tohoku University, Association of Pacific Rim Universities



COLLEGE OF SOCIAL SCIENCES

University of Hawai'i at MānoaTM



**WHERE INSPIRATION LEADS TO
CHANGE**



COLLEGE OF SOCIAL SCIENCES

University of Hawai'i at MānoaTM





COLLEGE OF SOCIAL SCIENCES

University of Hawai'i at Mānoa

