

Productivity Dynamics: A Comparison of the Manufacturing Sector in Korea and Japan

**Prepared for Korea-Japan Workshop on Productivity
Seoul National University, Seoul, Korea, December 7, 2012**

Sanghoon Ahn

(Korea Development Institute)

Kyoji Fukao

(Hitotsubashi University, NISTEP and RIETI)

Younggak Kim

(Senshu University and NISTEP)

Hyeog Ug Kwon

(Nihon University, NISTEP and RIETI)

Contents

- **Motivation**
- **Long-term Trends**
 - **Decomposing Output and Value Added Growth**
 - **Factor Inputs and Productivity**
- **Data and Methods**
 - **Data**
 - **Productivity Dynamics Decomposition**
- **Preliminary Findings**
 - **Productivity Growth by Technology Level**
 - **Firm Dynamics by Technology Level**
- **Implications and Future Works**

Contents

- **Motivation**
- Long-term Trends
 - Decomposing Output and Value Added Growth
 - Factor Inputs and Productivity
- Data and Methods
 - Data
 - Productivity Dynamics Decomposition
- Preliminary Findings
 - Productivity Growth by Technology Level
 - Firm Dynamics by Technology Level
- Implications and Future Works

Japan and Korea

■ Similarities

- Export-oriented growth
- Strong manufacturing (but weak tertiary sector?)
- Aging population
- Increasing competition from emerging economies (especially from China)

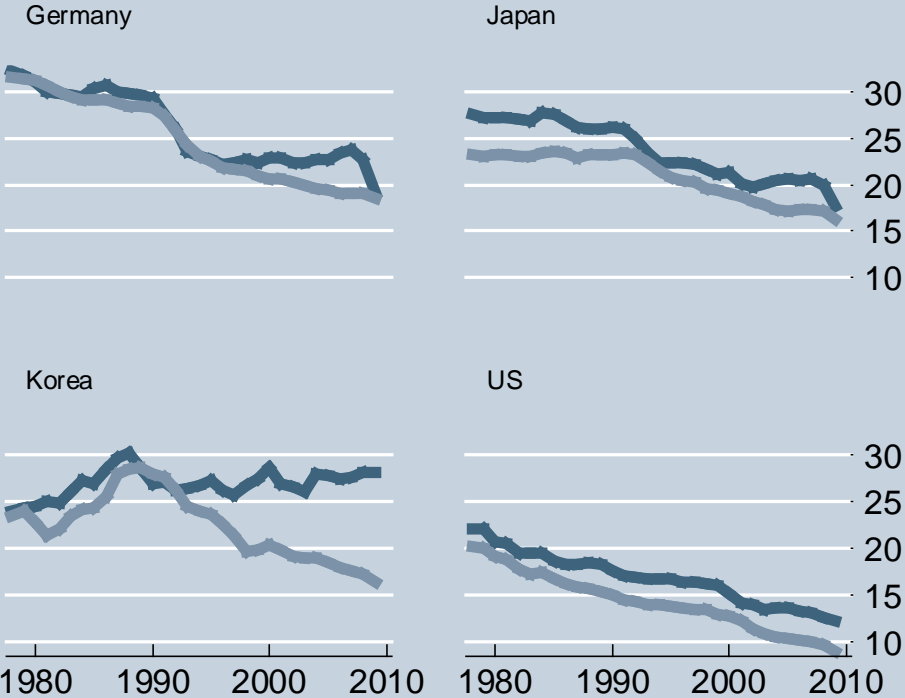
■ Differences

- Different size
- Distance to frontier
- Latecomer's advantage
- Speed of recovery
- Different challenges

Past trends

Manufacturing Share relative to Total Economy

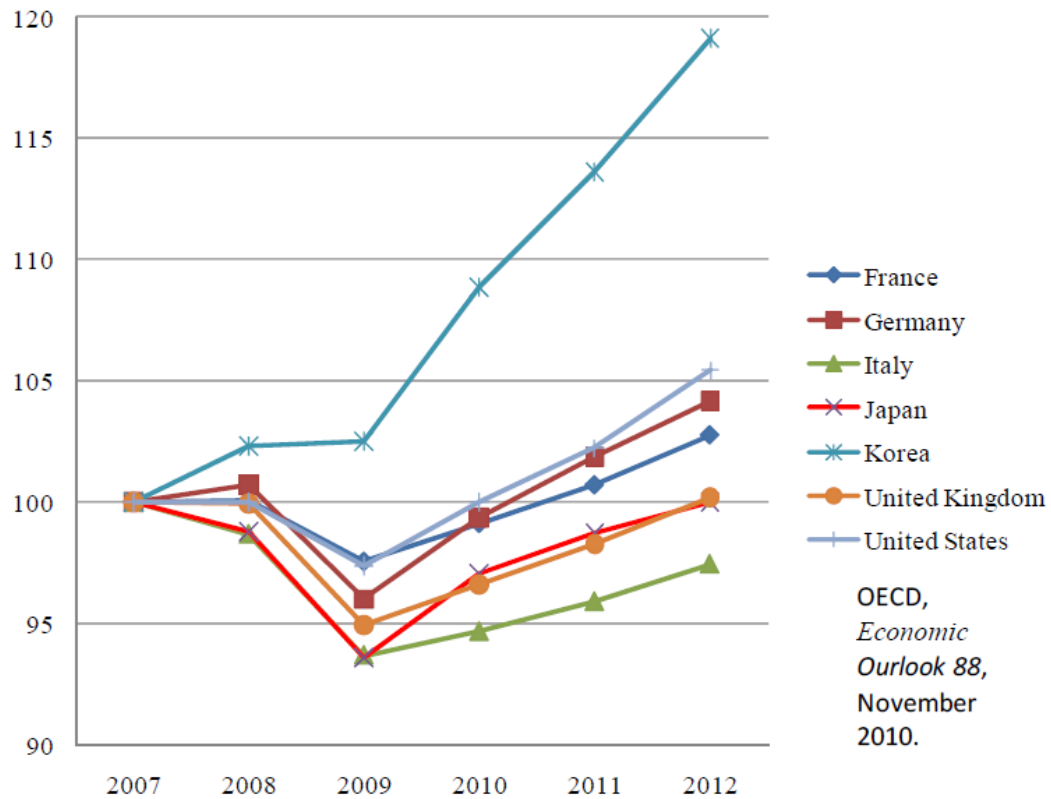
Value added Employment



year

Projections

Figure 16. Real GDP of Major OECD Countries: Past Record and Forecast (2007=100)

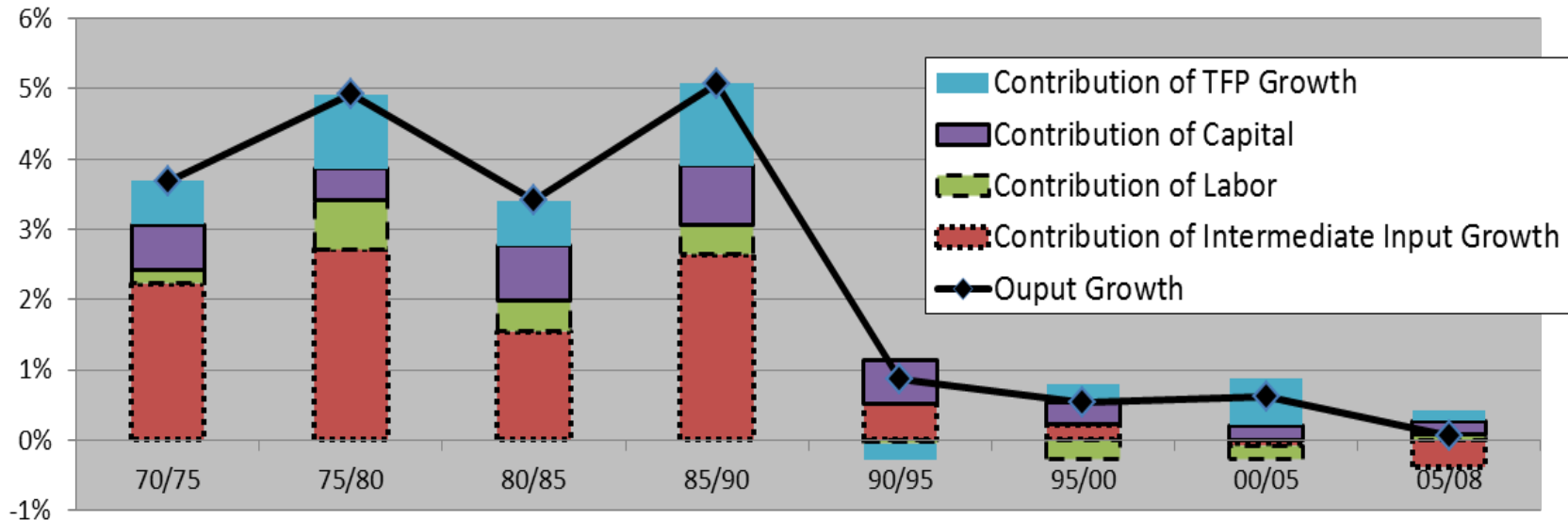


Contents

- Motivation
- **Long-term Trends**
 - **Decomposing Output and Value Added Growth**
 - **Factor Inputs and Productivity**
- Data and Methods
 - Data
 - Productivity Dynamics Decomposition
- Preliminary Findings
 - Productivity Growth by Technology Level
 - Firm Dynamics by Technology Level
- Implications and Future Works

Long-term Trends: Japan (1)

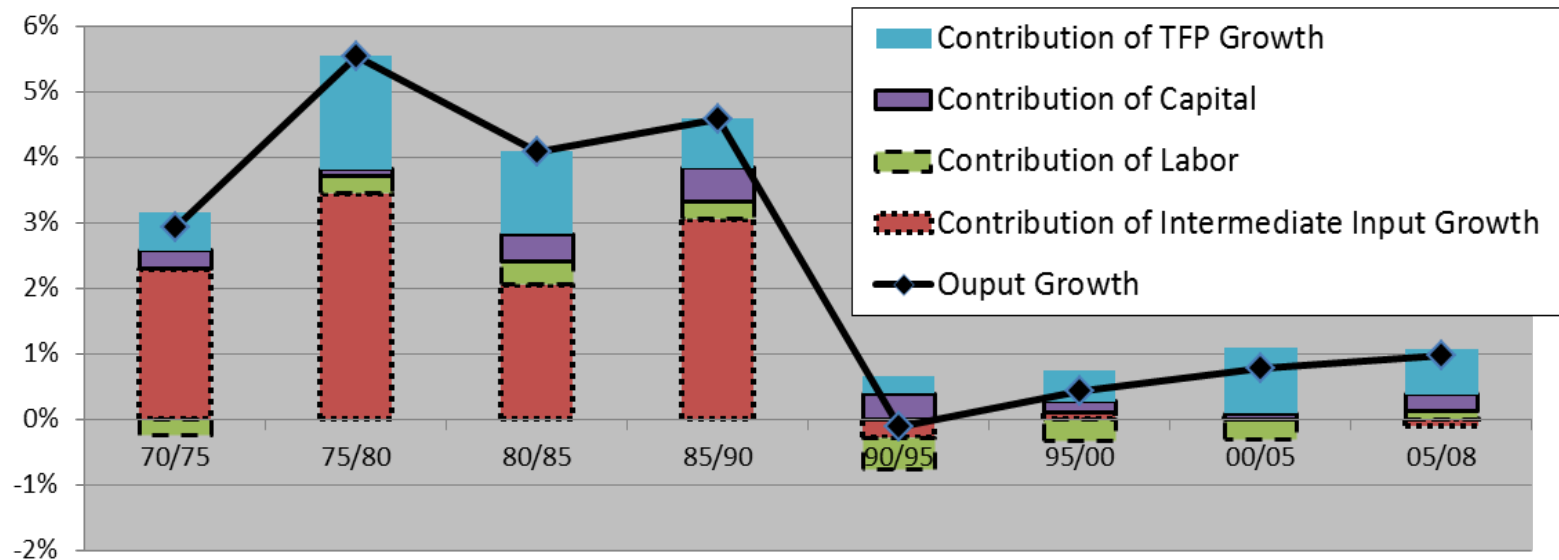
Growth Accounting of Market Economy by JIP 2011



- Growth accounting results for Japan's private sector.
- TFP growth slowed down during the 1990s.
- Since the 2000s, the most important source of Japan's economic growth has been TFP growth.

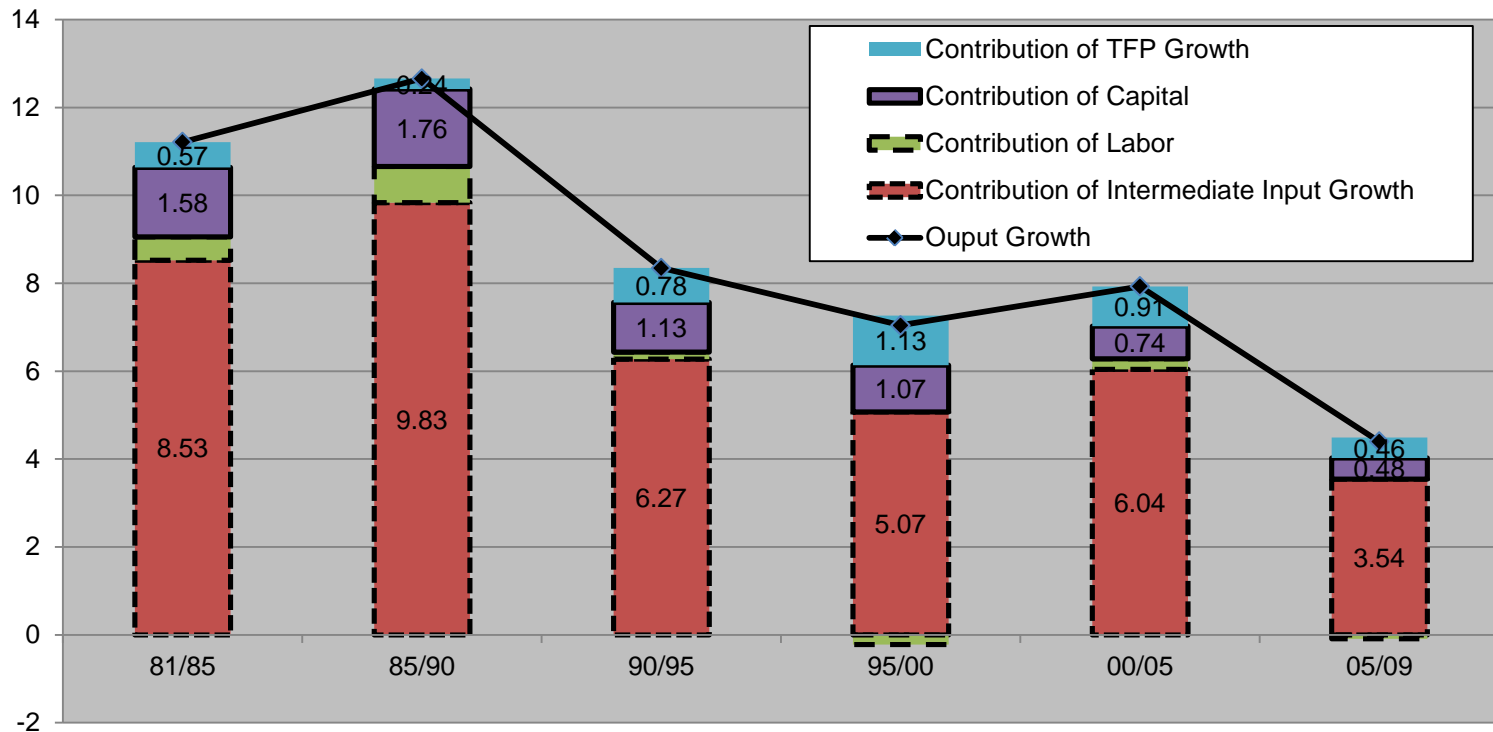
Long-term Trends: Japan (2)

Growth Accounting of Manufacturing Sectors by JIP 2011



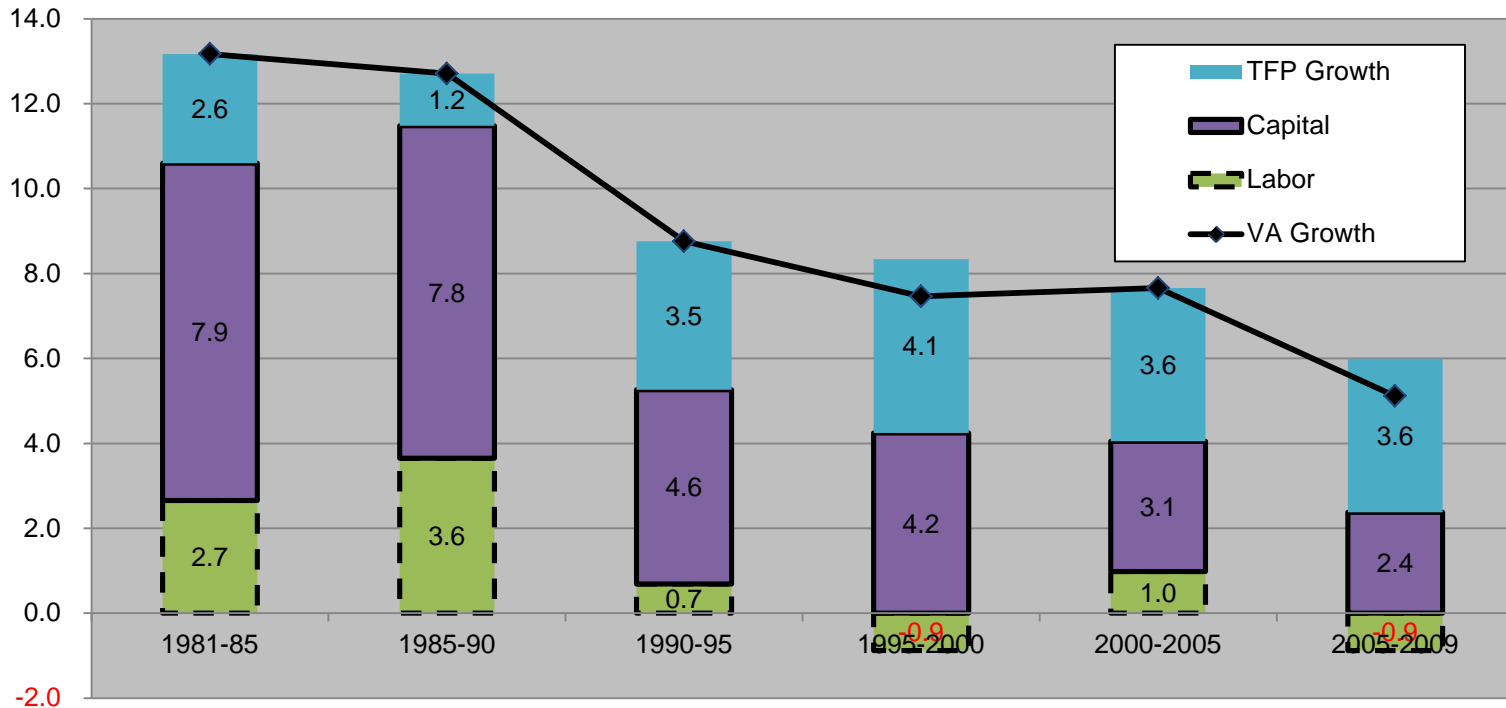
- Growth accounting results for Japan's manufacturing sector.
- TFP growth also slowed down during the 1990s.
- Since the 2000s, TFP growth in the manufacturing sector has recovered.

Long-term Trends: Korea (1)



- Growth accounting of Korea's manufacturing sector output (KIP 2011)
- TFP growth fluctuated, but recently has been decelerating.
- Since the 1990s, the contribution of labor input has been close to zero.

Long-term Trends: Korea (2)



- Growth accounting for Korea's manufacturing sector VA (KIP 2011)
- Growth in VA decelerating, but productivity growth remains robust.
- Contribution of factor input growth has been declining since 1990.

Contents

- Motivation
- Long-term Trends
 - Decomposing Output and Value Added Growth
 - Factor Inputs and Productivity
- **Data and Methods**
 - **Data**
 - **Productivity Dynamics Decomposition**
- Preliminary Findings
 - Productivity Growth by Technology Level
 - Firm Dynamics by Technology Level
- Implications and Future Works

Micro Data: Japan

- **Main Data Source: *Census of Manufactures***
 - **Coverage: All plants in the manufacturing sector (with 4 or more employees)**
 - **Information: Shipments, number of employees, book value of tangible fixed assets, wage bill, intermediate materials, etc.**
 - **Plant-level, not firm-level**
- **Additional Data Sources**
 - ***Establishment and Enterprise Census*: Larger coverage of establishments, but fewer items covered**
 - ***Basic Survey of Japanese Business Structure and Activities* : Firm-level data since 1991**

Micro Data: Korea

- **Main Data Source: *Mining and Manufacturing Survey***
 - **Coverage: All plants with five or more employees in the mining and manufacturing industries**
 - **Information: Plant-level information on output, inputs, and a variety of additional items, including the plant ID, the regional code, and the industry code assigned to each plant based on its major product. Similar to *Census of Manufactures of Japan***
 - **Plant-level, not firm level**
- **Additional Data Sources**
 - ***Census on Establishments*: Larger coverage of establishments, but fewer items covered**
 - ***Survey of Business Activities*: Firm-level data since 2005**

Analysis of Productivity Dynamics

➤ Panel data based on *Census of Manufactures* (Japan, 1985-2005) and *Mining and Manufacturing Survey* (Korea, 1985-2003).

➤ Calculation of TFP at the plant level

- Following Good, Nadiri and Sickles (1997) and Aw, Chen and Roberts (2001), we measured each plant's TFP level in comparison with the industry average TFP level.
- Aggregation at industry level (54 manufacturing sectors in Japan; 34 manufacturing sectors in Korea)

$$\ln TFP_{f,t} = (\ln Q_{f,t} - \overline{\ln Q_t}) - \sum_{i=1}^n \frac{1}{2} (S_{i,f,t} + \overline{S_{i,t}}) (\ln X_{i,f,t} - \overline{\ln X_{i,t}}) \text{ for } t = 0,$$

and

$$\ln TFP_{f,t} = (\ln Q_{f,t} - \overline{\ln Q_t}) - \sum_{i=1}^n \frac{1}{2} (S_{i,f,t} + \overline{S_{i,t}}) (\ln X_{i,f,t} - \overline{\ln X_{i,t}}) \\ + \sum_{s=1}^t (\overline{\ln Q_s} - \overline{\ln Q_{s-1}}) - \sum_{s=1}^t \sum_{i=1}^n \frac{1}{2} (\overline{S_{i,s}} + \overline{S_{i,s-1}}) (\overline{\ln X_{i,s}} - \overline{\ln X_{i,s-1}}) \text{ for } t \geq 1.$$

Productivity Dynamics Decomposition

- We define the industry TFP level in year t as:

$$\ln TFP_t = \sum_{f=1}^n \theta_{f,t} \ln TFP_{f,t}$$

- We can decompose changes in industry average TFP levels into the sum of the following four factors (Foster, Haltiwanger and Krizan, 2001):

➤ Within effect:

$$\sum_{f \in S} \theta_{f,t-\tau} \Delta \ln TFP_{f,t}$$

➤ Between effect:

$$\sum_{f \in S} \Delta \theta_{f,t} (\ln TFP_{f,t-\tau} - \overline{\ln TFP_{t-\tau}})$$

➤ Covariance effect:

$$\sum_{f \in S} \Delta \theta_{f,t} \Delta \ln TFP_{f,t}$$

➤ Entry effect:

$$\sum_{f \in N} \theta_{f,t} (\ln TFP_{f,t} - \overline{\ln TFP_{t-\tau}})$$

➤ Exit effect:

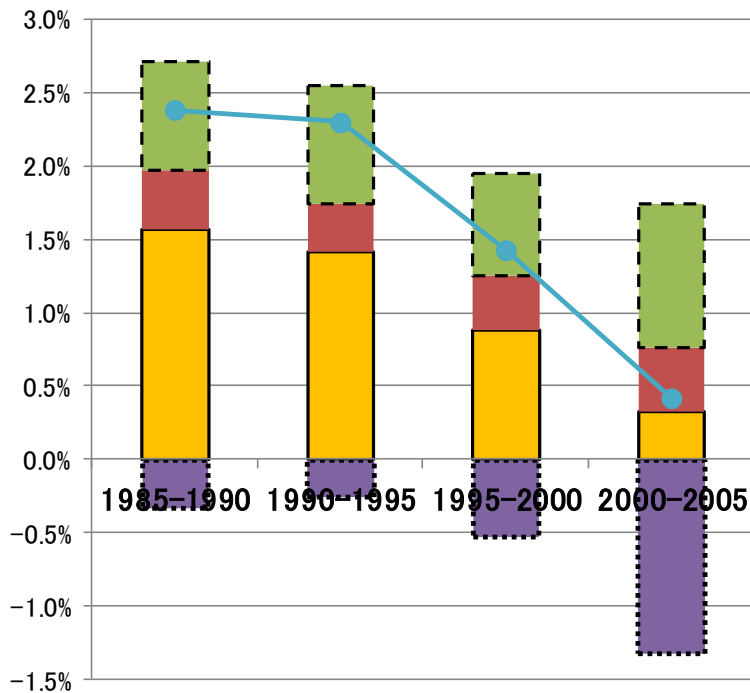
$$\sum_{f \in X} \theta_{f,t-\tau} (\overline{\ln TFP_{t-\tau}} - \ln TFP_{f,t-\tau})$$

Contents

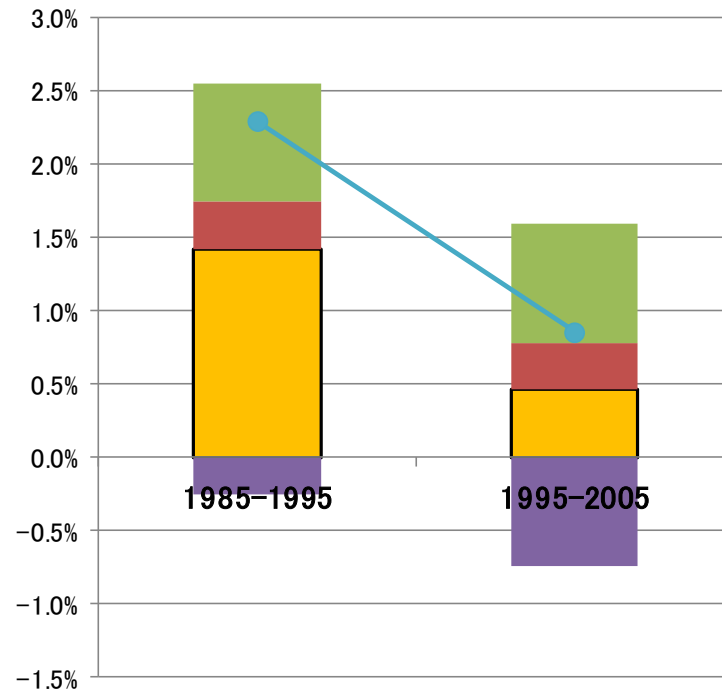
- Motivation
- Long-term Trends
 - Decomposing Output and Value Added Growth
 - Factor Inputs and Productivity
- Data and Methods
 - Data
 - Productivity Dynamics Decomposition
- **Preliminary Findings**
 - **Productivity Growth by Technology Level**
 - **Firm Dynamics by Technology Level**
- Implications and Future Works

Productivity Dynamics: Japan

5 year intervals



10 year intervals



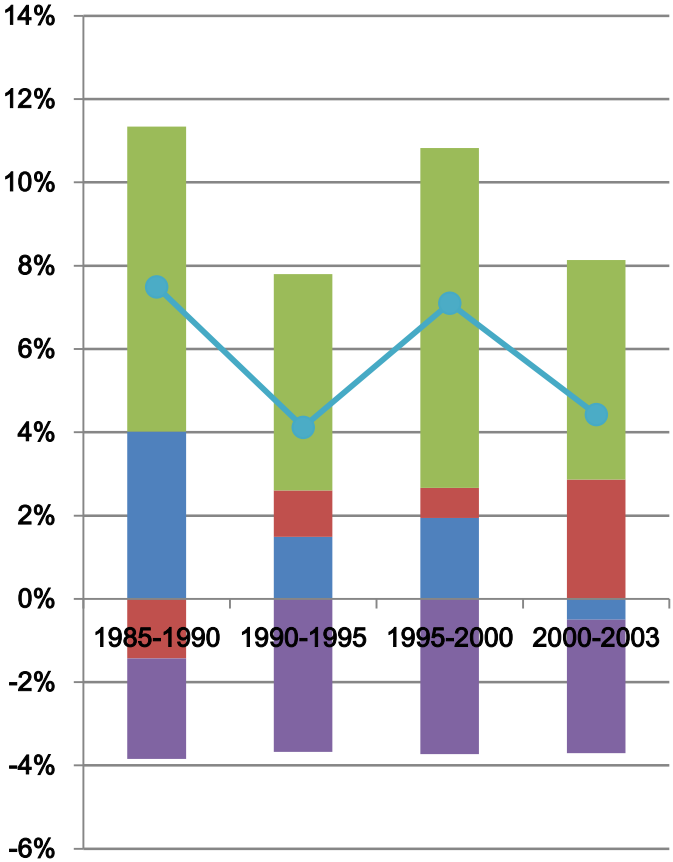
- Exit effect
- Entry effect
- Reallocation effect
- Within effect
- TFP Growth

Productivity Dynamics: Japan

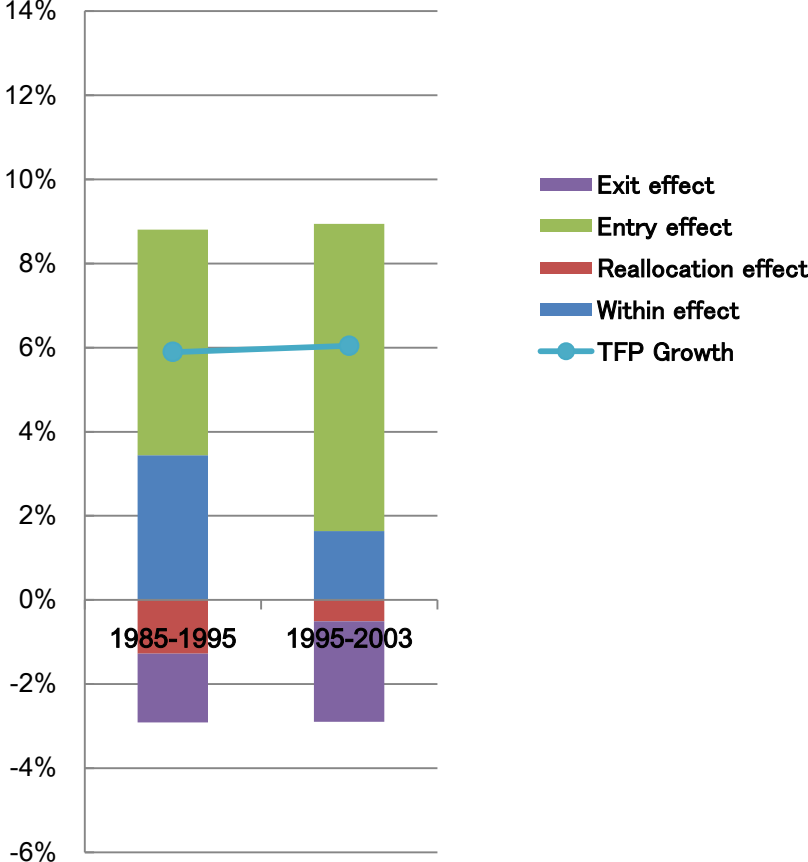
- **TFP growth has been declining since 1990.**
- **Most of the productivity decline occurred within plants.**
- **Plants with higher productivity tend to increase their market share and Entering plants tend to have above-average productivity levels.**
- **Exiting firms also tend to have above-average productivity levels, lowering aggregate productivity level. Such negative exit effects have been sizable.** (In fact, most of the decrease in TFP growth during 2000-2005 can be explained by negative exit effects.)

Productivity Dynamics: Korea

5 year intervals



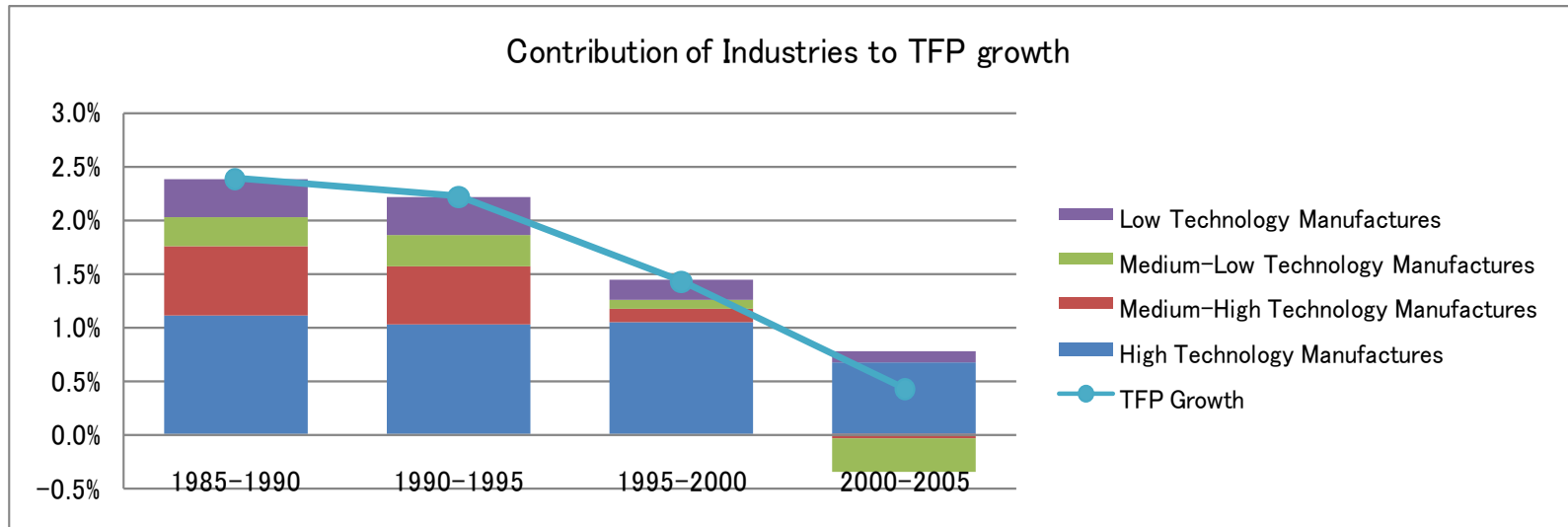
10 year intervals



Productivity Dynamics: Korea

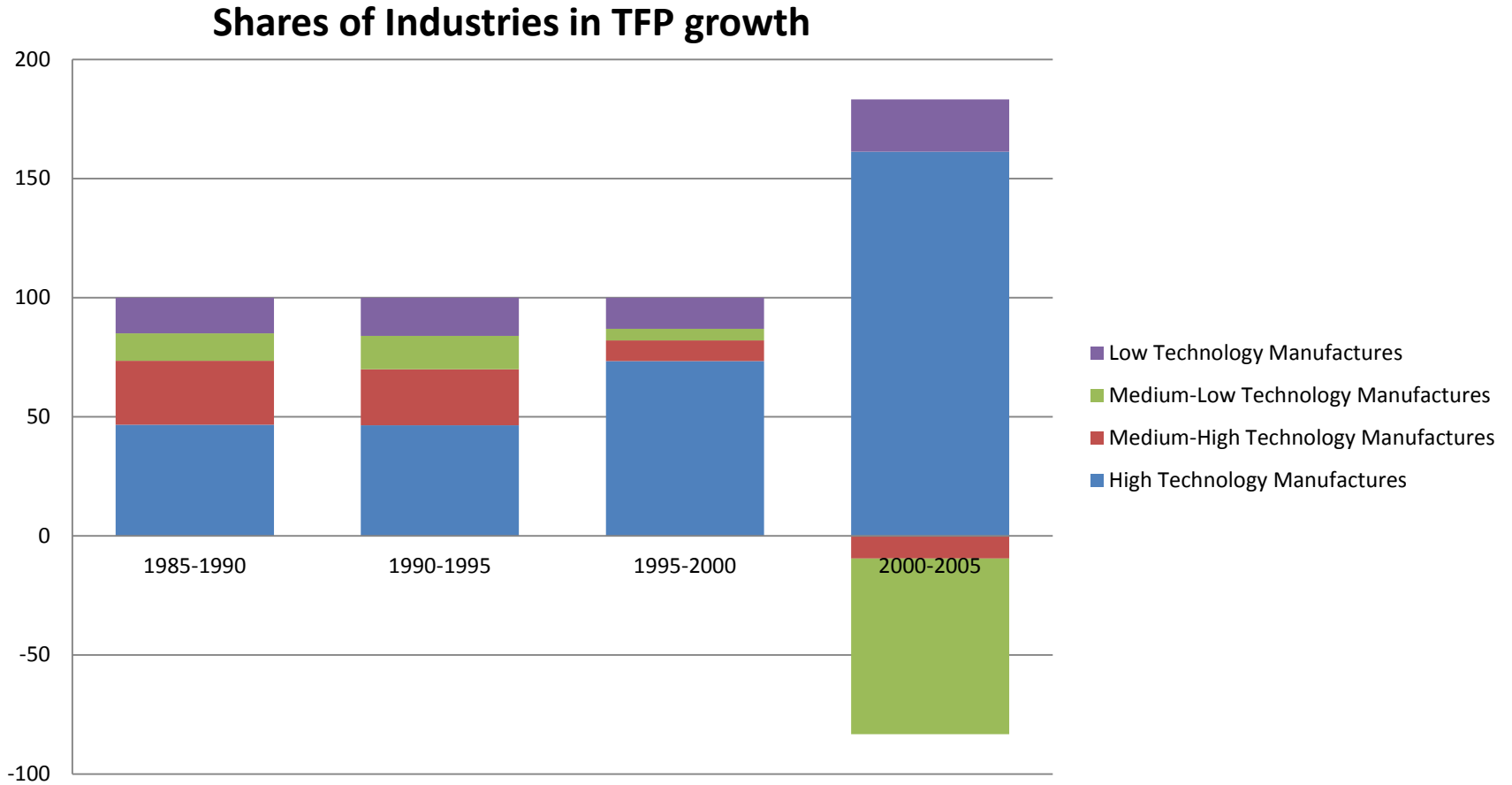
- **TFP growth rate still remains high.**
- **Within plant productivity growth has been declining, while plant entry continues to have positive effects.**
- **Similar to Japan, many exiting plants have above-average productivity.**
- **The negative exit effect was not only sizable but also persistent.**

Technology and Productivity Dynamics: Japan



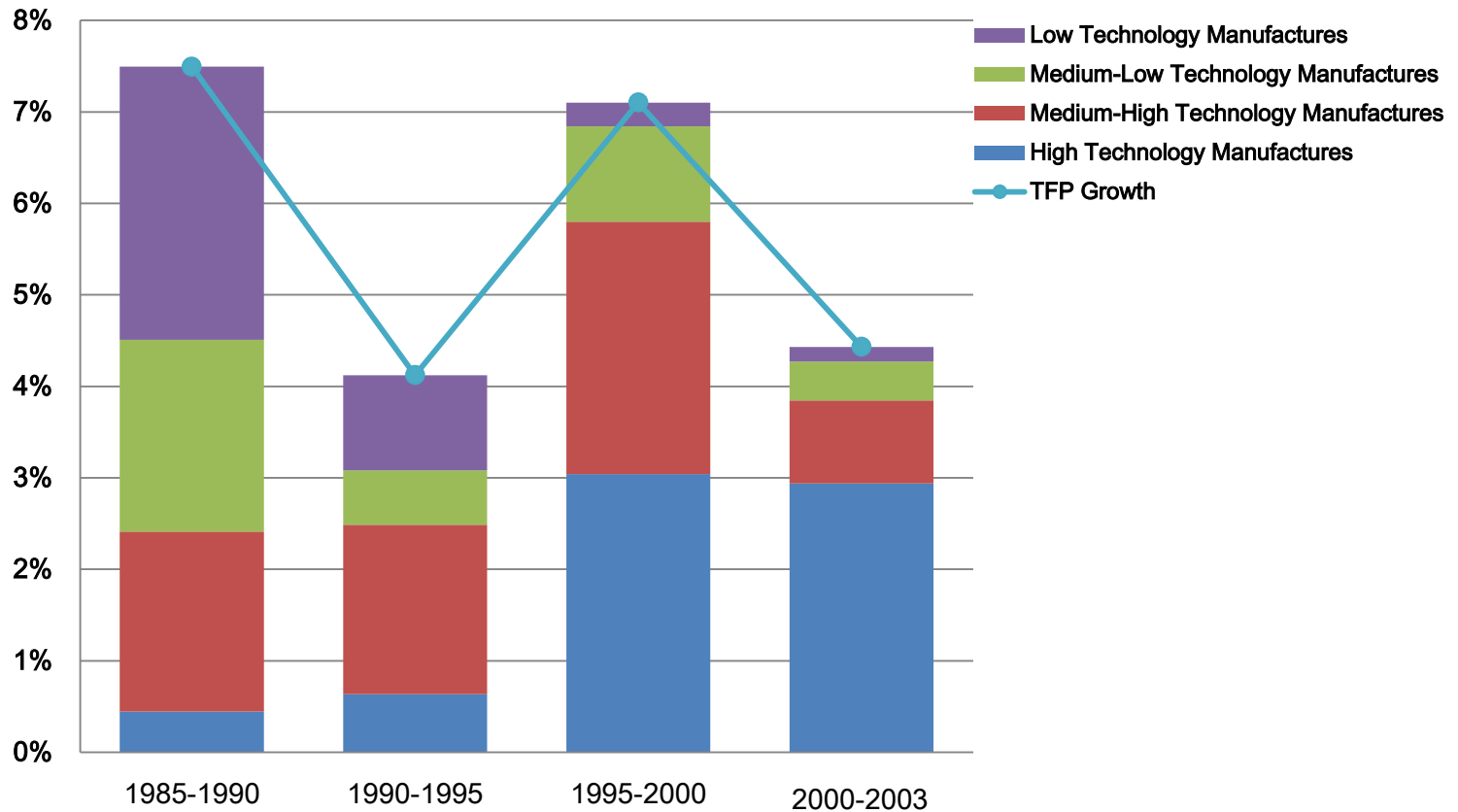
- **High technology industries, such as electronics and pharmaceutical industry account for most of the productivity growth in the manufacturing sector.**
- **The contribution of medium-high and medium low technology industries (such as chemicals, motor vehicles, iron and steel) has sharply declined since 1995.**

Technology and Productivity Dynamics: Japan



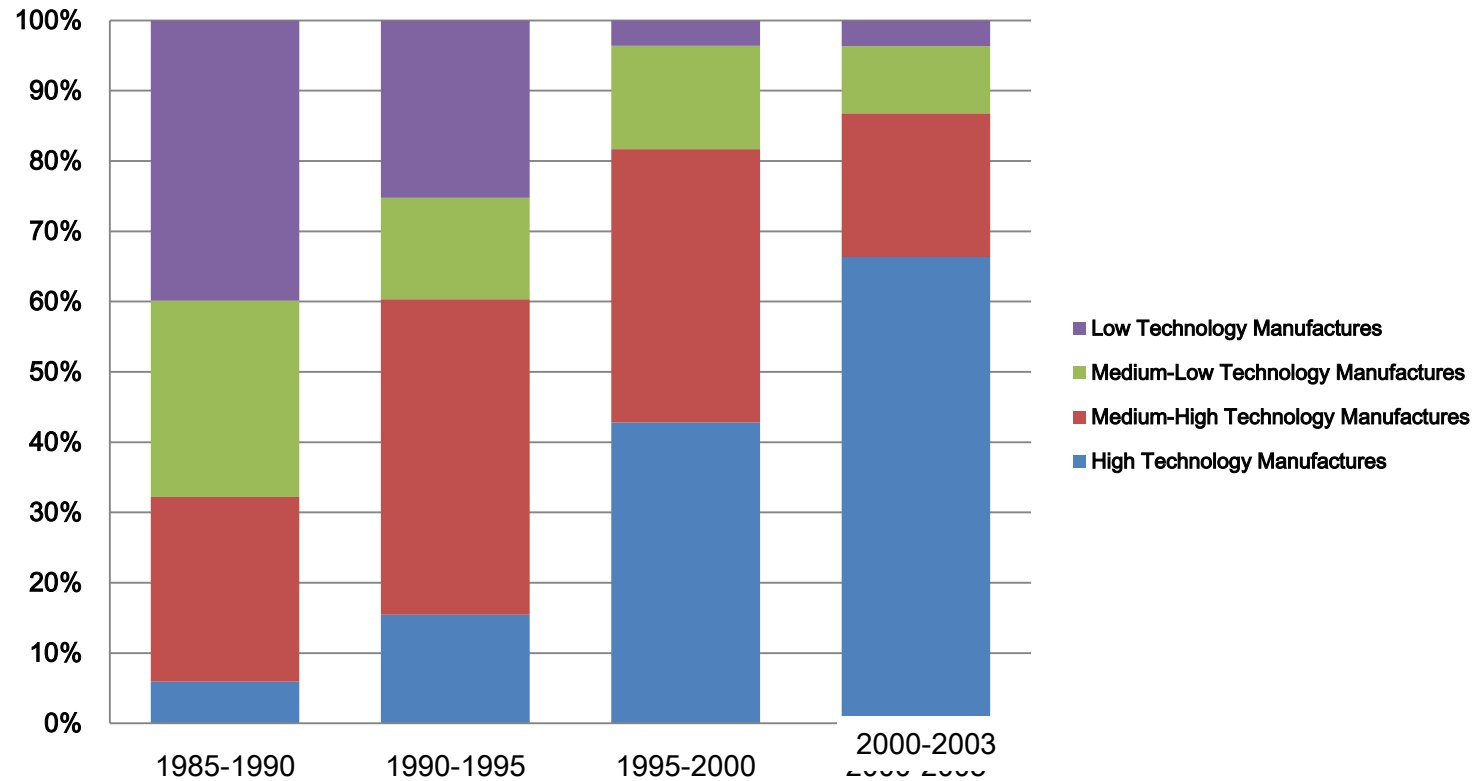
Technology and Productivity Dynamics: Korea

Contribution of Industries to TFP growth



Technology and Productivity Dynamics: Korea

Shares of Industries in TFP growth



Entry Regulation and Productivity Dynamics

- **Entry Regulation and Firm Dynamics**
 - Entry regulation reduces entry rate
 - Entry regulation reduces exit rate

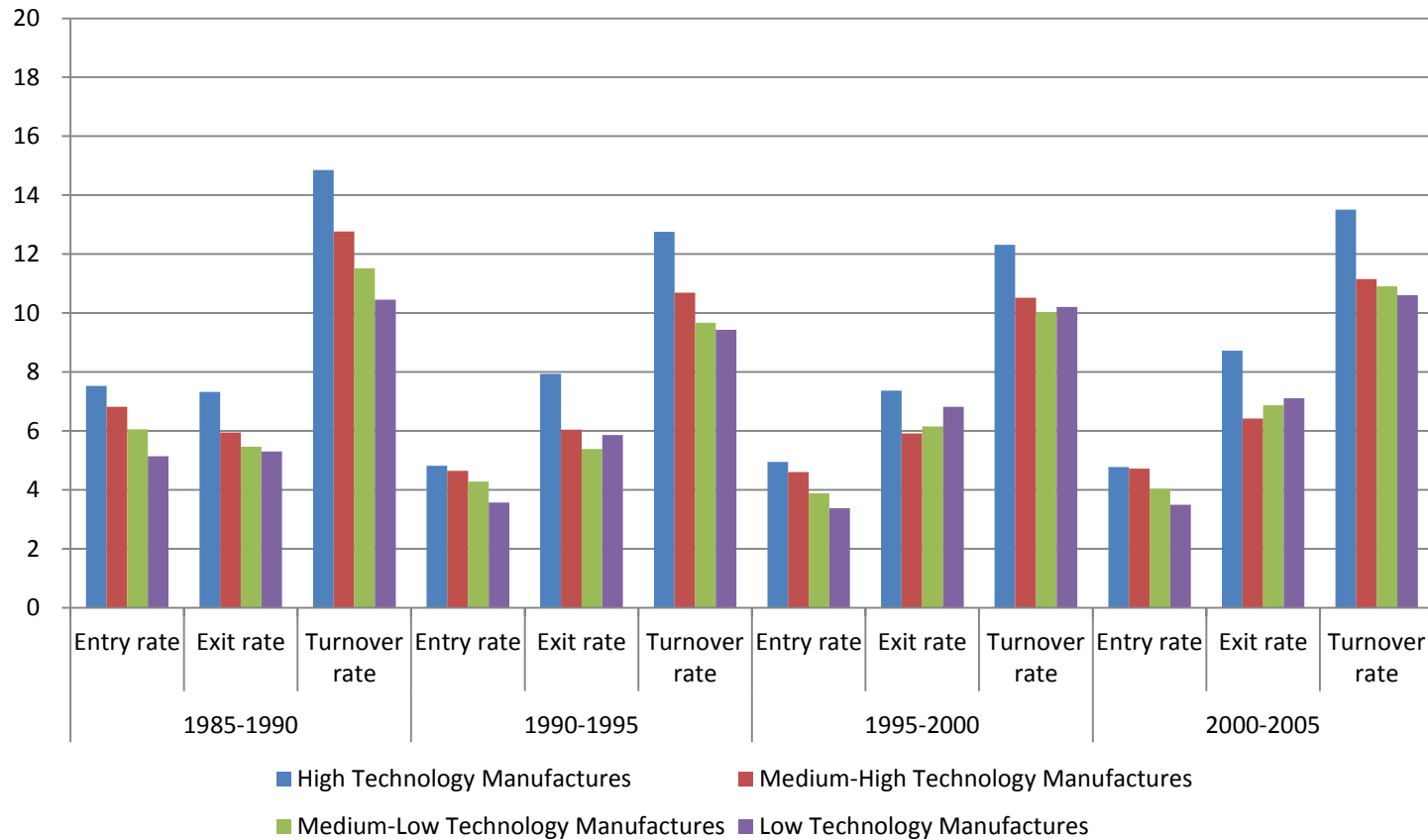
- **Firm Dynamics and Economic Performance**
 - Entry raises employment and TFP growth
 - Exit raises (output and) TFP growth

(Ahn, 2006)

Firm Dynamics: Japan

Entry, Exit, and Turnover Rates

(%, annualized, 1985-2005)



Firm Dynamics: Japan

Entry, Exit, and Turnover Rates

(%, annualized, 1985-2005)

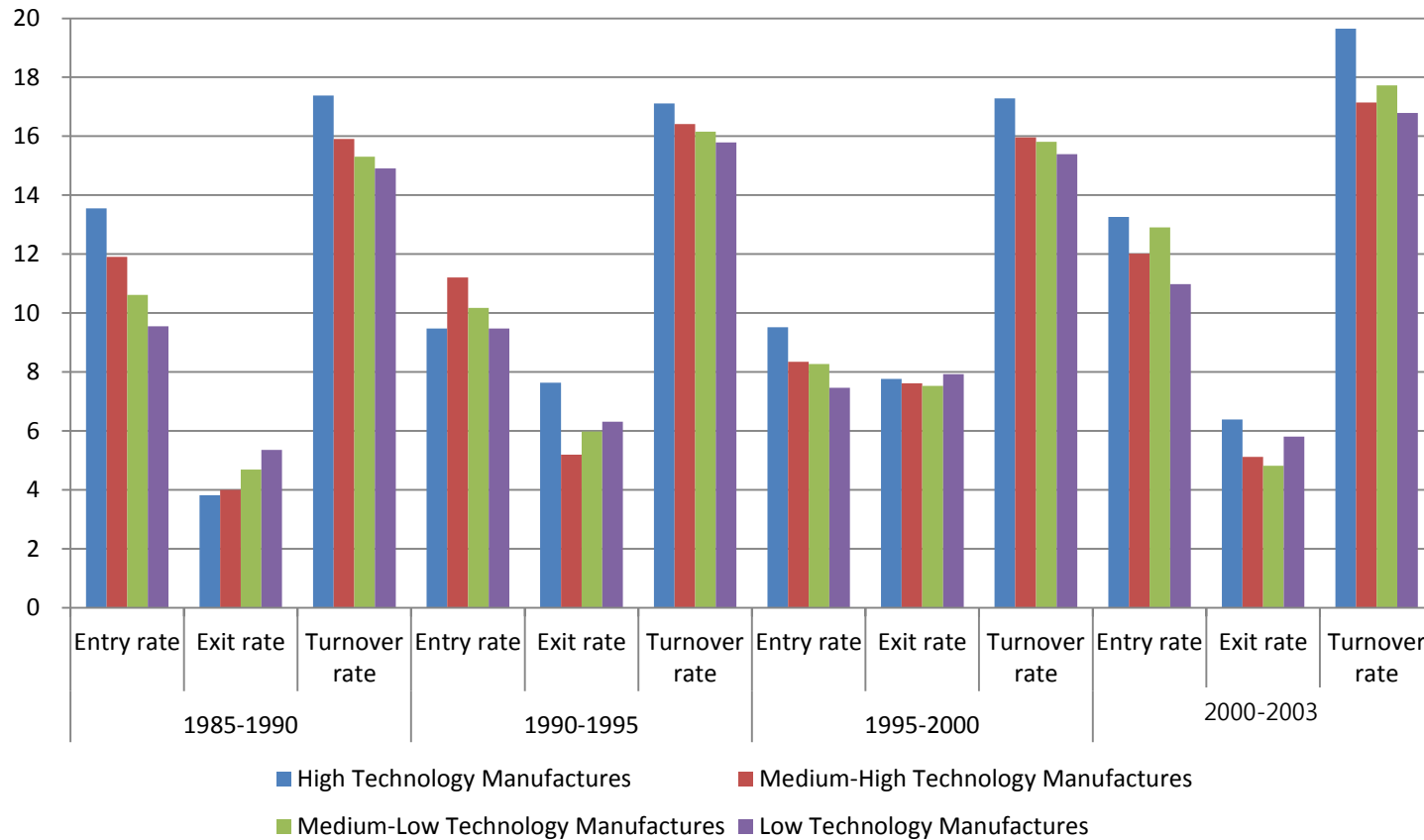
	High Technology Manufacturing	Medium-High Technology Manufacturing	Medium-Low Technology Manufacturing	Low Technology Manufacturing	
1985-1990	Entry rate	7.5	6.8	6.1	5.1
	Exit rate	7.3	6.0	5.5	5.3
	Turnover rate	14.9	12.8	11.5	10.5
1990-1995	Entry rate	4.8	4.6	4.3	3.6
	Exit rate	7.9	6.0	5.4	5.9
	Turnover rate	12.8	10.7	9.7	9.4
1995-2000	Entry rate	4.9	4.6	3.9	3.4
	Exit rate	7.4	5.9	6.2	6.8
	Turnover rate	12.3	10.5	10.0	10.2
2000-2005	Entry rate	4.8	4.7	4.0	3.5
	Exit rate	8.7	6.4	6.9	7.1
	Turnover rate	13.5	11.2	10.9	10.6

Source: Author's calculations based on *Census of Manufactures*.

Firm Dynamics: Korea

Entry, Exit, and Turnover Rates

(%, annualized, 1985-2003)



Firm Dynamics: Korea

Entry, Exit, and Turnover Rates

(%, annualized, 1985-2003)

	High Technology Manufacturing	Medium-High Technology Manufacturing	Medium-Low Technology Manufacturing	Low Technology Manufacturing
1985-1990				
Entry rate	13.6	11.9	10.6	9.6
Exit rate	3.8	4.0	4.7	5.4
Turnover rate	17.4	15.9	15.3	14.9
1990-1995				
Entry rate	9.5	11.2	10.2	9.5
Exit rate	7.6	5.2	6.0	6.3
Turnover rate	17.1	16.4	16.2	15.8
1995-2000				
Entry rate	9.5	8.3	8.3	7.5
Exit rate	7.8	7.6	7.5	7.9
Turnover rate	17.3	16.0	15.8	15.4
2000-2003				
Entry rate	13.3	12.0	12.9	11.0
Exit rate	6.4	5.1	4.8	5.8
Turnover rate	19.7	17.1	17.7	16.8

Source: Author's calculations based on *Mining and Manufacturing Survey*.

Contents

- Motivation
- Long-term Trends
 - Decomposing Output and Value Added Growth
 - Factor Inputs and Productivity
- Data and Methods
 - Data
 - Productivity Dynamics Decomposition
- Preliminary Findings
 - Productivity Growth by Technology Level
 - Firm Dynamics by Technology Level
- **Implications and Future Works**

Major Problems in Productivity Dynamics

- ***Creative destruction*** plays a very important role for productivity growth and innovation by enhancing:
 - The expansion or entry of high productivity firms
 - The contraction or exit by low productivity firms
- Productivity growth driven by ***creative destruction*** is impeded due to:
 - High entry costs
 - High levels of taxation
 - Labor market rigidity
 - ...

Regulatory Costs of Entry are Sizable

Japan-Korea-USA Comparison (1999)

Number of procedures that a start-up has to comply with in order to obtain legal status	Japan	Korea	USA	Average of 85 countries
Safety and health	0	0	0	0.34
Environment	0	0	0	0.14
Taxes	2	2	1	2.04
Employment	2	4	1	1.94
Screening	7	7	2	6.04
Time (business days; a week has 5 business days and a month has 22.)	26	27	4	47.4
Cost (share of per capita GDP 1999)	11.6%	16.3%	0.5%	47.1%
Time + Cost (share of per capita GDP 1999)	22.0%	27.1%	1.7%	66.0%
Dollar Amount of Time + Cost	\$ 7,094	\$ 2,298	\$ 517	\$ 5,428
Per capita GDP 1999	\$ 32,230	\$ 8,490	\$ 30,600	\$ 8,226

Source: Djankov, *et al.* (2002), "The Regulation of Entry", *Quarterly Journal of Economics*, 117: 1-37

Barriers to Economic Activity

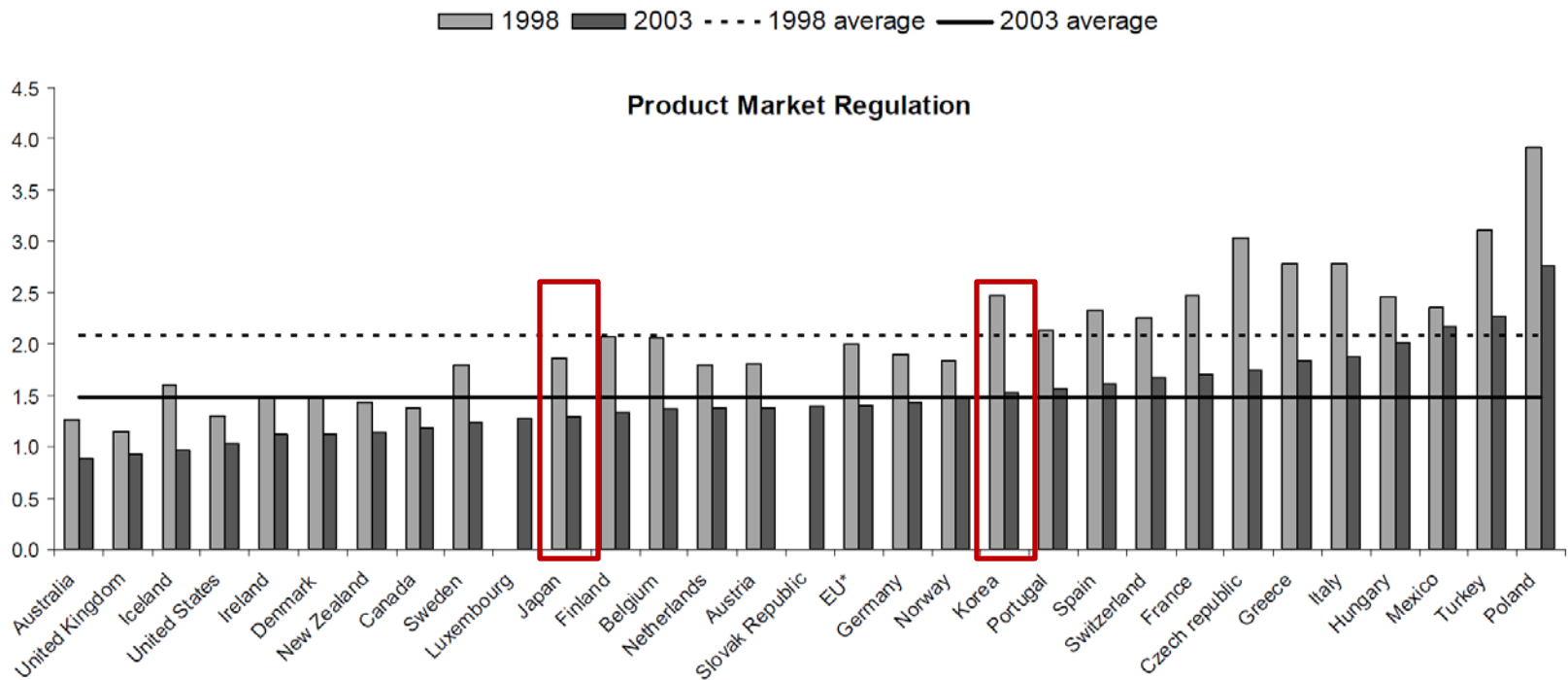
Japan-Korea-USA Comparison (2005 and 2010)

	Japan		Korea		USA	
	2005	2010	2005	2010	2005	2010
Ease of doing business index (1=most business-friendly regulations)	-	20	-	15	-	4
Start-up procedures to register a business (number)	11	8	10	8	6	6
Time required to start a business (days)	31	23	17	13	6	6
Time to resolve insolvency (years)	0.6	0.6	1.5	1.5	1.5	1.5
Total tax rate (%)	53.1	48.6	36.4	29.8	46.0	46.8

Source: World Bank, *Doing Business* (2011)

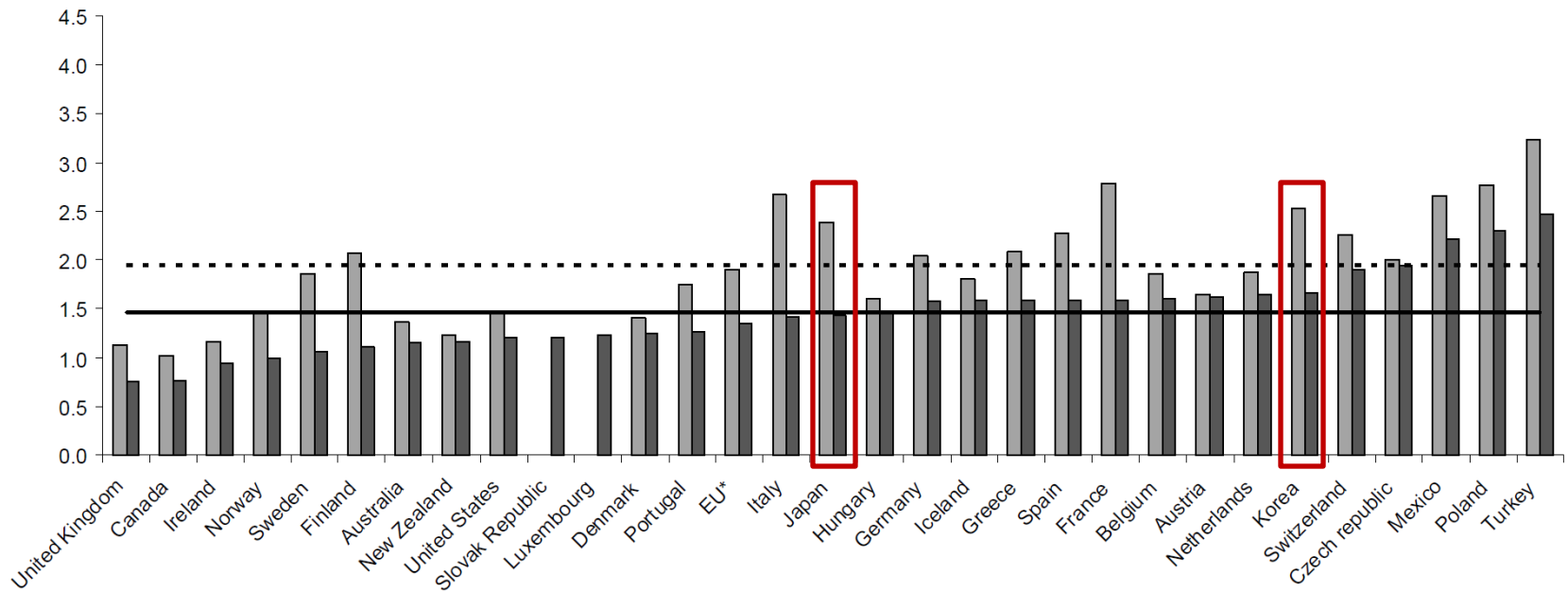
OECD *Product Market Regulation* Indicator

1998 and 2003



OECD *Product Market Regulation* Indicator

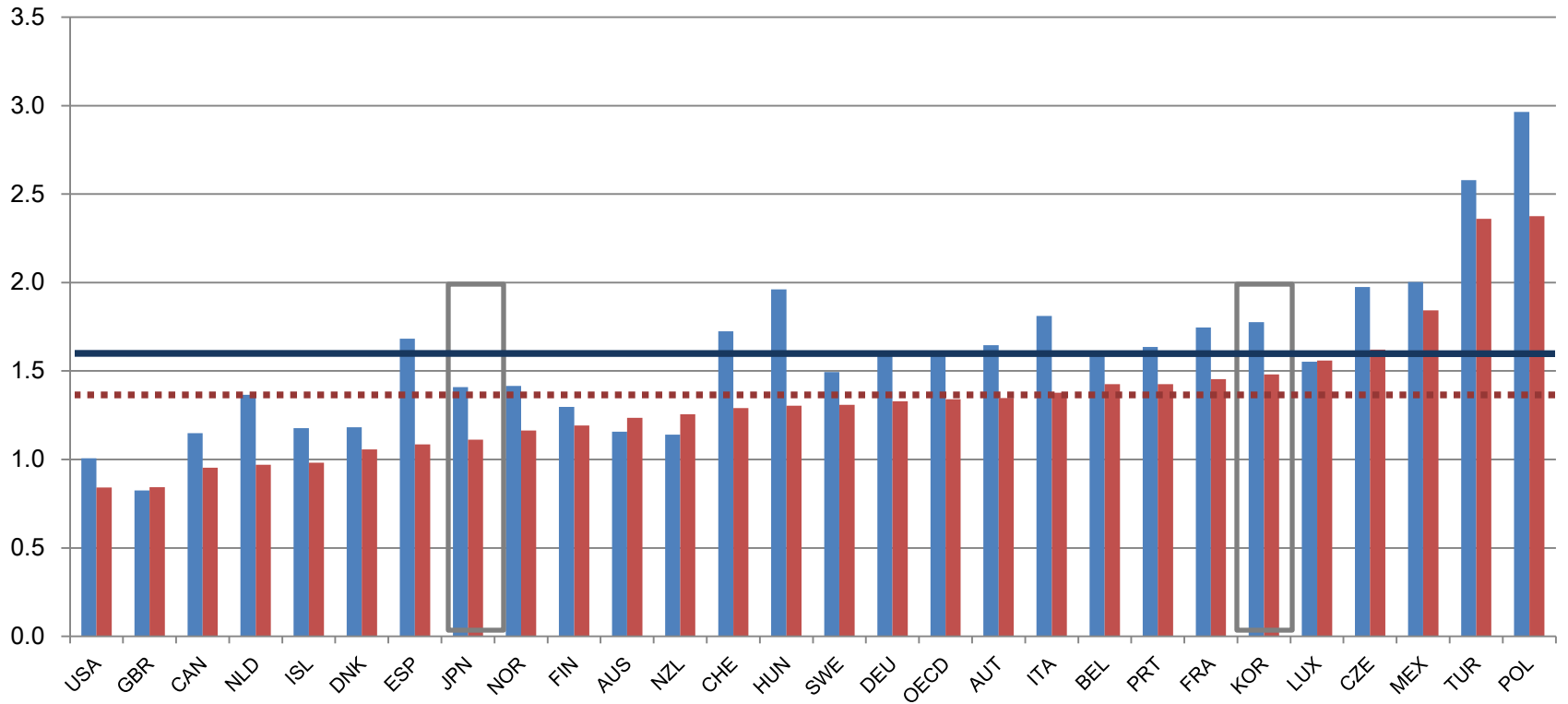
Barriers to Entrepreneurship (1998 and 2003)



OECD *Product Market Regulation* Indicator

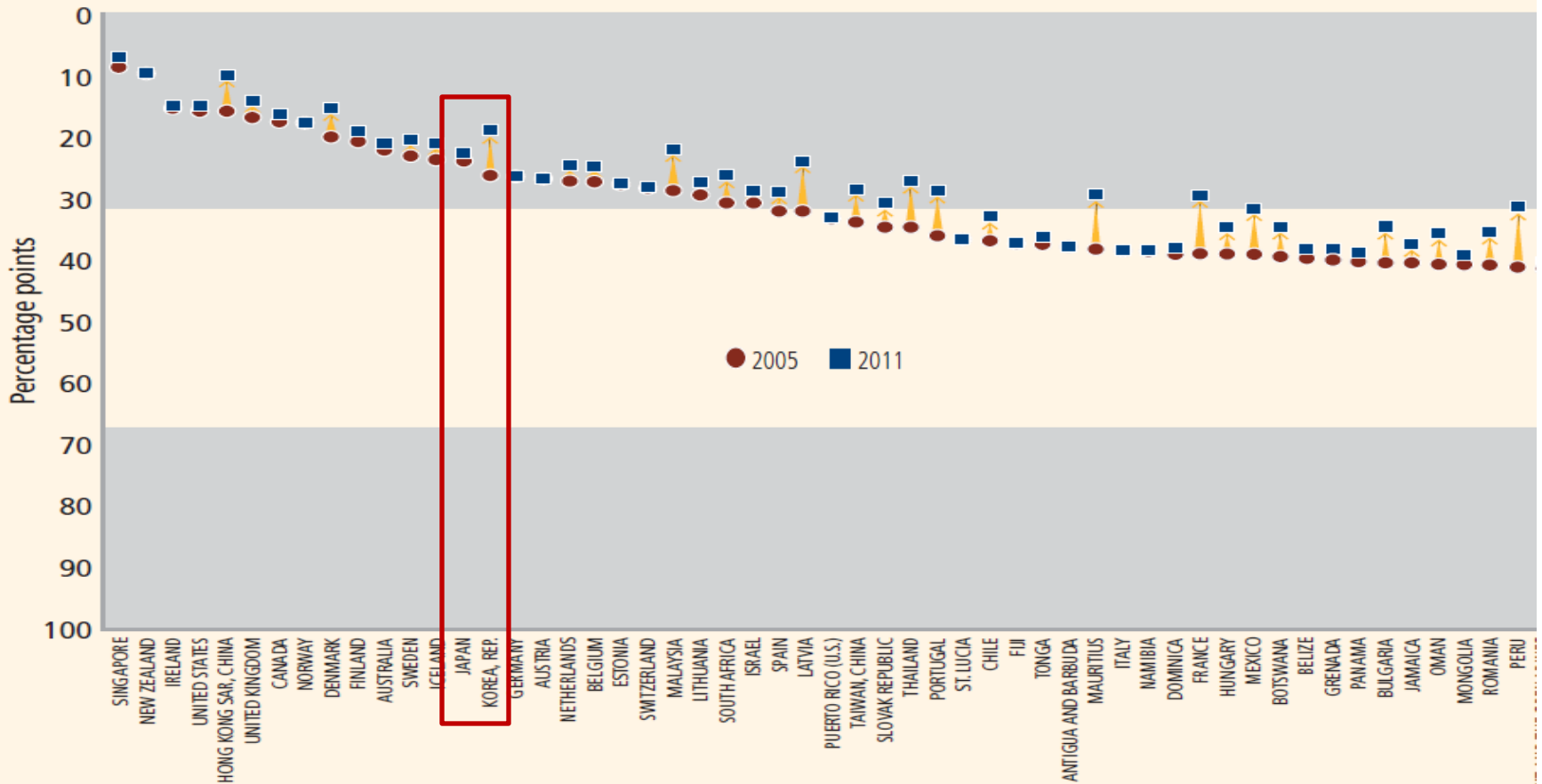
2003 and 2008

■ 2003 ■ 2008



World Bank *Doing Business* Indicator

FIGURE 1.8 In the past 6 years 163 economies moved closer to the frontier in regulatory practice
Distance to frontier, 2005 and 2011



Manufacturing to Services

- Services account for **over 60% of total economic activity** in most OECD countries.
 - Service sector growth has outpaced overall economic growth in the OECD area, a trend which is expected to continue.
- Services are **a growing source of employment** in the OECD area
 - Demand for highly skilled white-collar workers is rising, although services are also an important source of low-skilled jobs.
- Increased **trade and investment in services** is an important vehicle for growth and competition.
 - Technological advances are increasing the tradability of services.
 - Liberalization of markets is providing an environment more conducive to international competition.

(OECD, 2000)

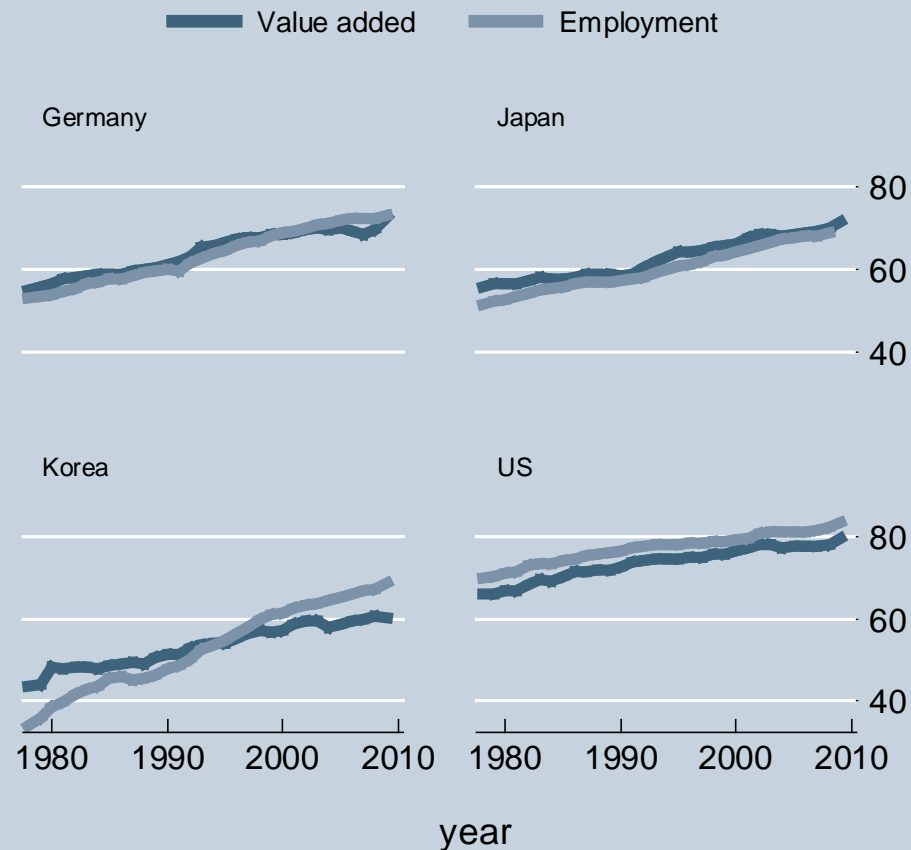
Policy Issues for Services

- The role of services in economic growth and job creation calls for greater government attention to improving services' performance.
 - This implies [reforms to domestic regulation, liberalization of international trade and investment](#), and [a reorientation of relevant government programs](#) to meet the needs of service industries more effectively.
- Many of the barriers to service sector development are not found at the border between countries, but are rather of a domestic nature.
 - Domestic [regulation](#) is one of the principal factors [limiting growth and competition in services](#).
- Services continue to be poorly covered in most basic statistics.
 - To improve understanding of service processes and performance, and to design policies that are better suited to the characteristics of the service sector, [better and more comprehensive data](#) are needed.

(OECD, 2000)

Manufacturing to Services

Service Sector relative to Total Economy



Investment and Innovation in Services

