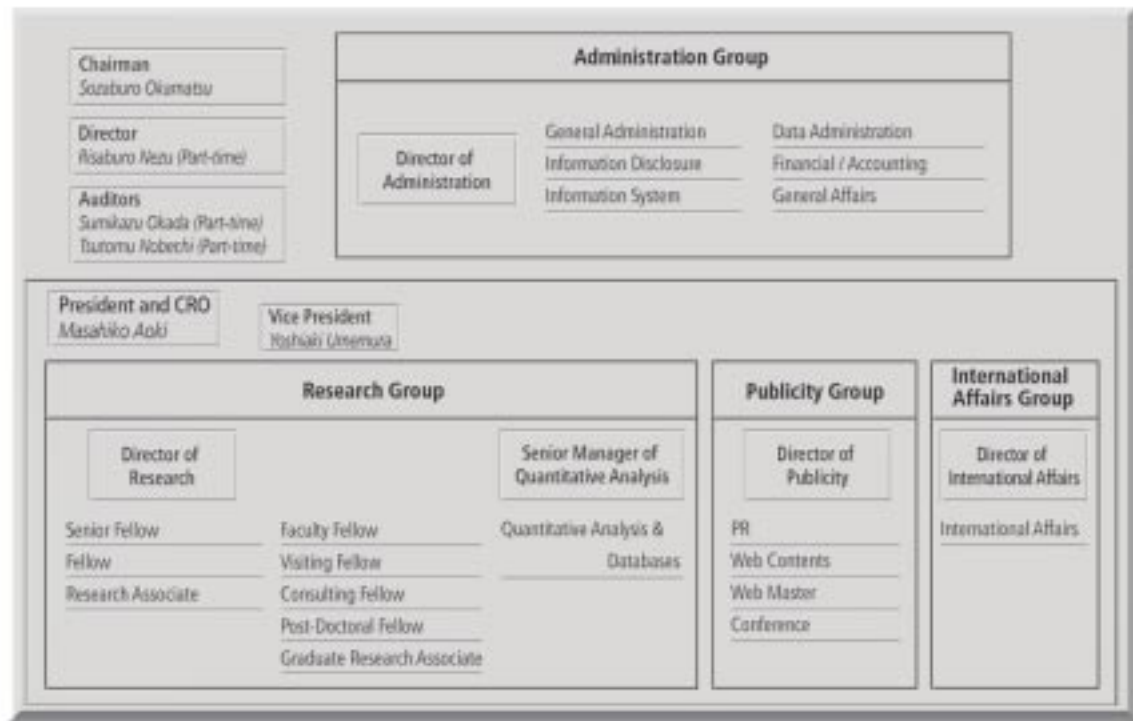


Organization



(As of August 31, 2002)

Evaluation Subcommittee for Research Institute of Economy, Trade and Industry

An independent administrative institution sets definite targets and plans for its activities. It is evaluated by a third party organization to ensure the adequacy of these plans and the transparency of its performance. This third party organization is called the Independent Administrative Institution Evaluation Committee. A subcommittee established for each institution undertakes an objective evaluation of the effectiveness and adequacy of the institution's operations.

Subcommittee Head: **Miyauchi, Yoshihiko**, *Chairman, Orix Corporation*

Sheard, Paul, *Chief Economist for Asia, Lehman Brothers Japan*

Nishioka, Koichi, *Deputy Chief Editorial Writer, Nihon Keizai Shimbun, Inc.*

Yoshitomi, Masaru, *Dean, Asian Development Bank Institute*

Academic Advisory Board

We have established the Academic Advisory Board as an advisory organization in our medium- or long-term research system that provides recommendations on our direction and research subjects. The first meeting was held in May 2002 and the Board offered us much useful advice as to how we proceed on our research activities in the future.

Hayami, Yujiro, *Professor, National Graduate Institute for Policy Studies*

Imai, Kenichi, *Chairman of the Board, Stanford Japan Center*

Inoki, Takenori, *Professor, International Research Center for Japanese Studies*

Kuroda, Masahiro, *Trustee, Keio University*

Nonaka, Ikujiro, *Professor, Graduate School of International Corporate Strategy, Hitotsubashi University*

Okuno-Fujiwara, Masahiro, *Professor, Faculty of Economics, University of Tokyo*

Sato, Koji, *Professor, Faculty of Law, Kinki University (Professor Emeritus of Kyoto University)*

(Listed in alphabetical order, as of August 2002)